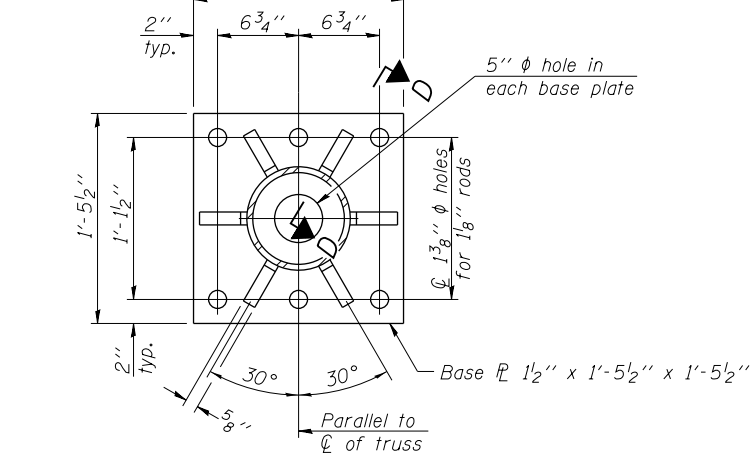
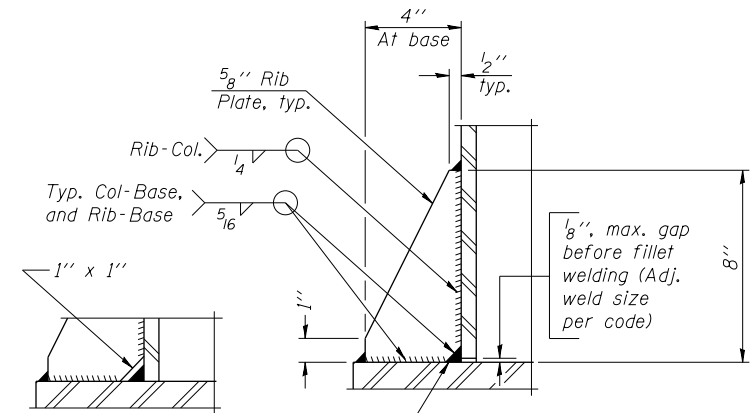


DETAIL B

Ribs shall be cut to fit slope of pipe. Stainless Steel Standard Grade Wire Cloth, 3" wide, 1/4" maximum opening with a minimum wire diameter of AWG. No. 16 with a minimum 2" lap. Secure to base plate after erection with 3/4" stainless steel banding.

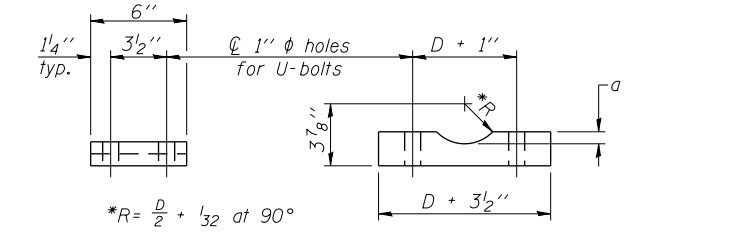


SECTION B-B



SECTION D-D

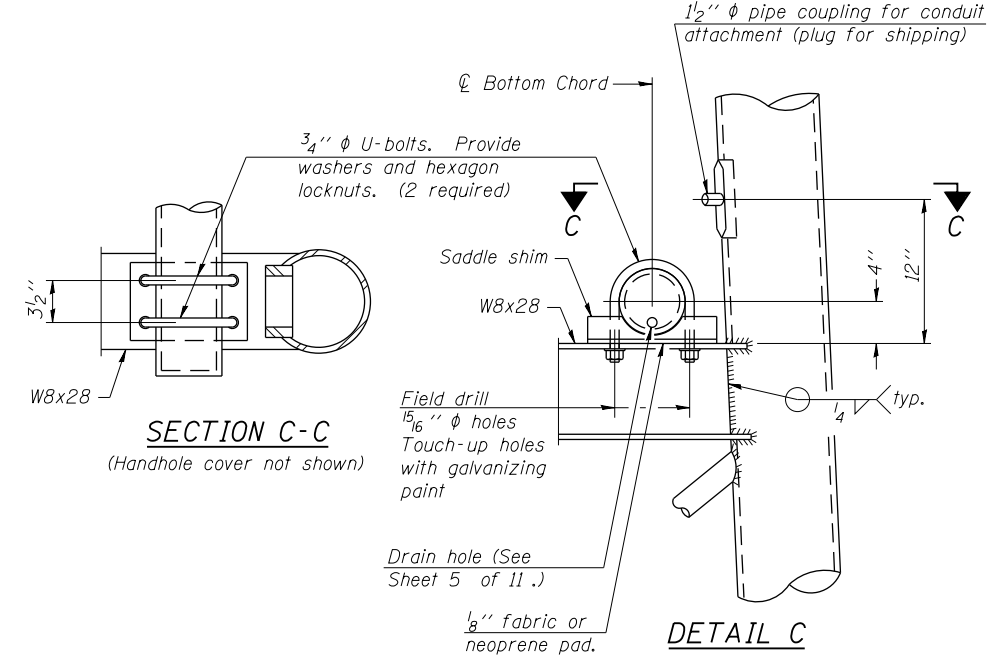
** Alternate detail if welding col. to base plate first, then snip inside corner of ribs. Terminate weld on rib 1/4" from snip.



SADDLE SHIM DETAIL

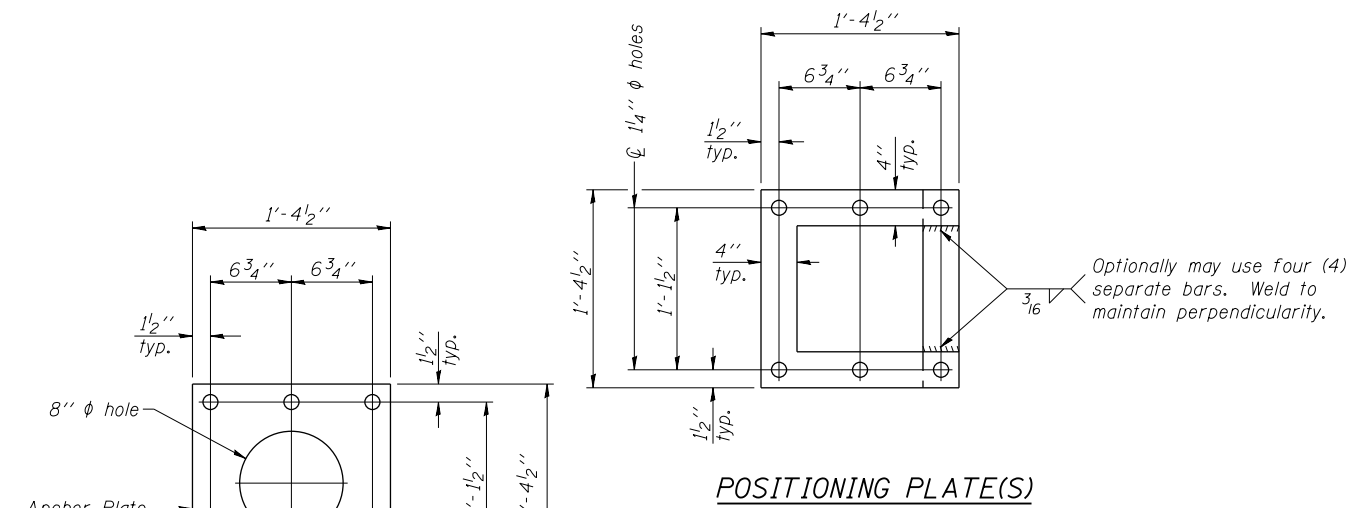
ASTM B26 Alloy 356-F or ASTM B209 Alloy 6061-T651 (4 required per sign truss)

Truss Chord Nominal Dia.	a
5"	3/4"
5 1/2"	13/16"
6"	7/8"
6 1/2"	15/16"



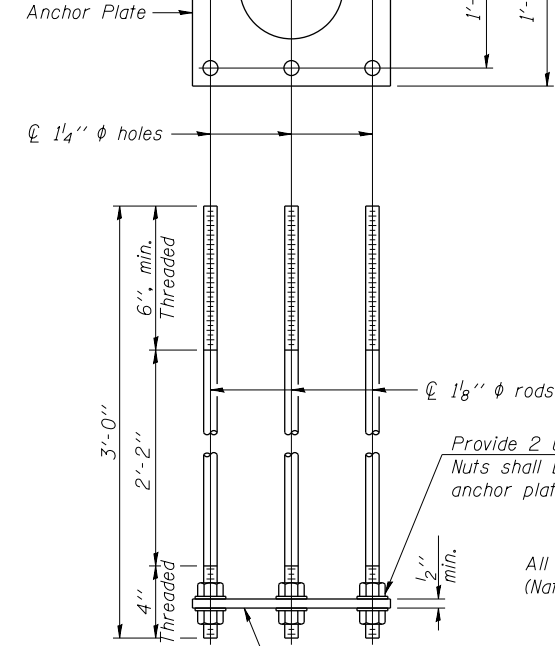
SECTION C-C
(Handhole cover not shown)

DETAIL C



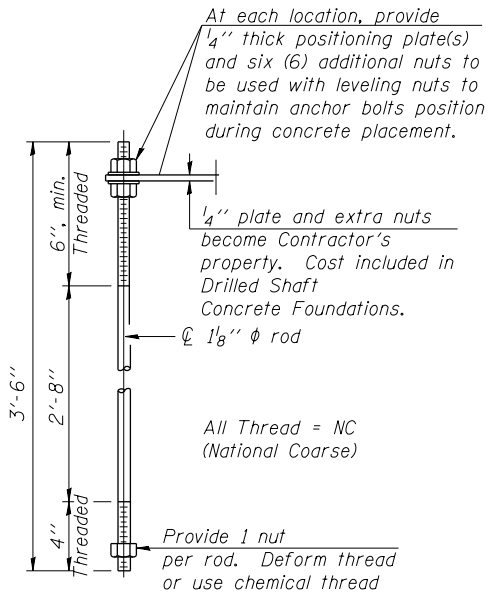
POSITIONING PLATE(S)

Optionally may use four (4) separate bars. Weld to maintain perpendicularity.



ANCHOR ROD DETAIL
Spread Footing Foundation

All Thread = NC (National Coarse)



ANCHOR ROD DETAIL
Drilled Shaft Foundation

All Thread = NC (National Coarse)

ANCHOR ROD DETAIL
Spread Footing Foundation

TYPE I-A TRUSS
8" φ PIPE SUPPORT FRAME DETAILS

Anchor rods shall conform to ASTM F1554 Grade 105. Galvanize upper 12" minimum per AASHTO M232. No welding shall be permitted on rods.

FILE PATH = c:\pwworking\beacom\llorenz\work\2013\60W26-sht-Sign-Det-12.dgn



DI60W26-sht-Sign-Det-12.dgn	DESIGNED - KAH	REVISED -
USER NAME = kolorenz	DRAWN - RLS	REVISED -
PLOT SCALE = 10.0000' / 1"	CHECKED - WJC	REVISED -
PLOT DATE = 8/18/2013	DATE - 8/20/13	REVISED -

STATE OF ILLINOIS
DEPARTMENT OF TRANSPORTATION

OVERHEAD SIGN STRUCTURES		
SUPPORT FRAME II		
SCALE: N.T.S.	SHEET 6 OF 11 SHEETS	STA. TO STA.

F.A.I. R.T.E. 90/94/290	SECTION 2013-008R	COUNTY COOK	TOTAL SHEETS 559	SHEET NO. 194
CONTRACT NO. 60W26			ILLINOIS FED. AID PROJECT	