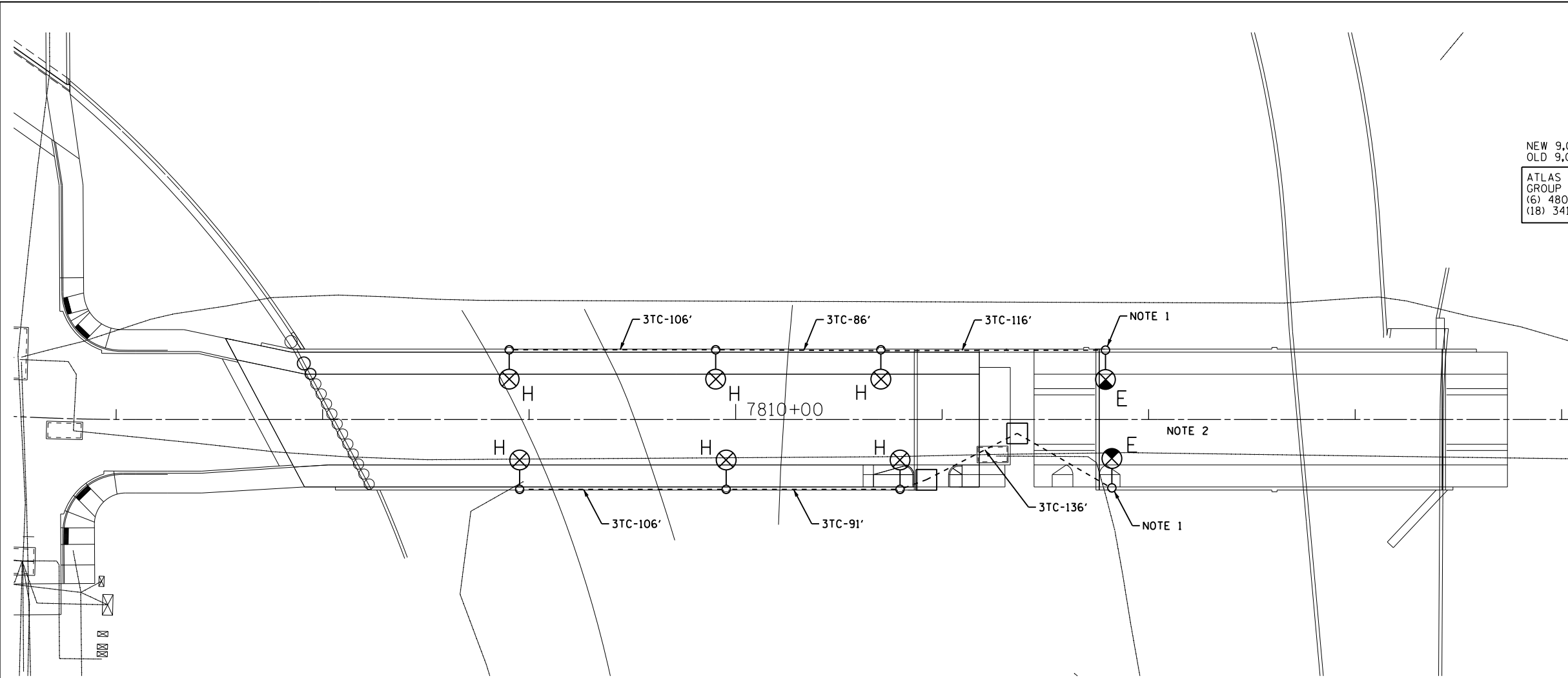
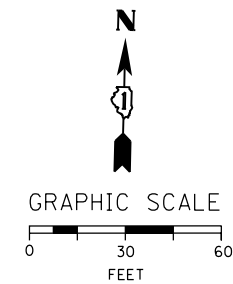


c:\pwworking\aecom\00\myer.sc\d0207895\DIGOWZ6-sht-Light-ll.dgn
 8/15/2013 10:29:05 AM



NEW 9,018 WATTS
OLD 9,018 WATTS

ATLAS NO. 0-24
GROUP NO. 6
(6) 480 WATT @ 240V
(18) 341 WATT @ 240V



NOTES:

1. SPLICE NEW CABLES TO EXISTING LIGHTING CIRCUITS LOCATED IN EXISTING POLE.
2. ALL LIGHTING UNITS SHOWN ON THIS DRAWING SHALL BE FED FROM EXISTING CDOT LIGHTING CONTROLLER GROUP NO. 6 LOCATED ON THE SW CORNER OF HALSTED AND DES PLAINES.

"H" INSTALL CDOT FURNISHED STEEL POLE, LUMINAIRE AND MAST ARM PER DRAWING NOS. 620, 762 AND 837.

FOR CONDUIT AND FOUNDATION PLANS
SEE DRAWING NO. E-10.

FOR LIGHTING REMOVAL PLANS SEE
DRAWING NO. E-12.

CITY OF CHICAGO DEPARTMENT OF TRANSPORTATION DIVISION OF ENGINEERING		
CONSULTANT: 		
WORK ORDER NO. _____	DATE _____	
COST ALLOCATION ACCOUNT _____		
APPROPRIATION ACCOUNT _____	MATERIAL _____	LABOR _____
HARRISON STREET LIGHTING CABLE AND EQUIPMENT INSTALLATION PLAN		
CITY OF CHICAGO DEPT. OF TRANSPORTATION DIVISION OF ELECTRICAL OPERATIONS		
DRAFTSMAN: CAM	CHIEF DRAFTSMAN: WDS	ENGINEER: WDS
SUPERVISING ENGINEER: WDS	ELEC. DESIGN ENGR.	
ENGINEER OF ELECTRICITY:		
GEN'L SUPT. OF ELECTRICITY:		
DEPUTY COMMISSIONER:		
SIZE: 22" 34"	SCALE: 1" = 30'	DATE: 8/20/13
DATE: 08/20/13		DWG. NO.: E-11
C.D.O.T. PROJECT NO.:		11 OF 22