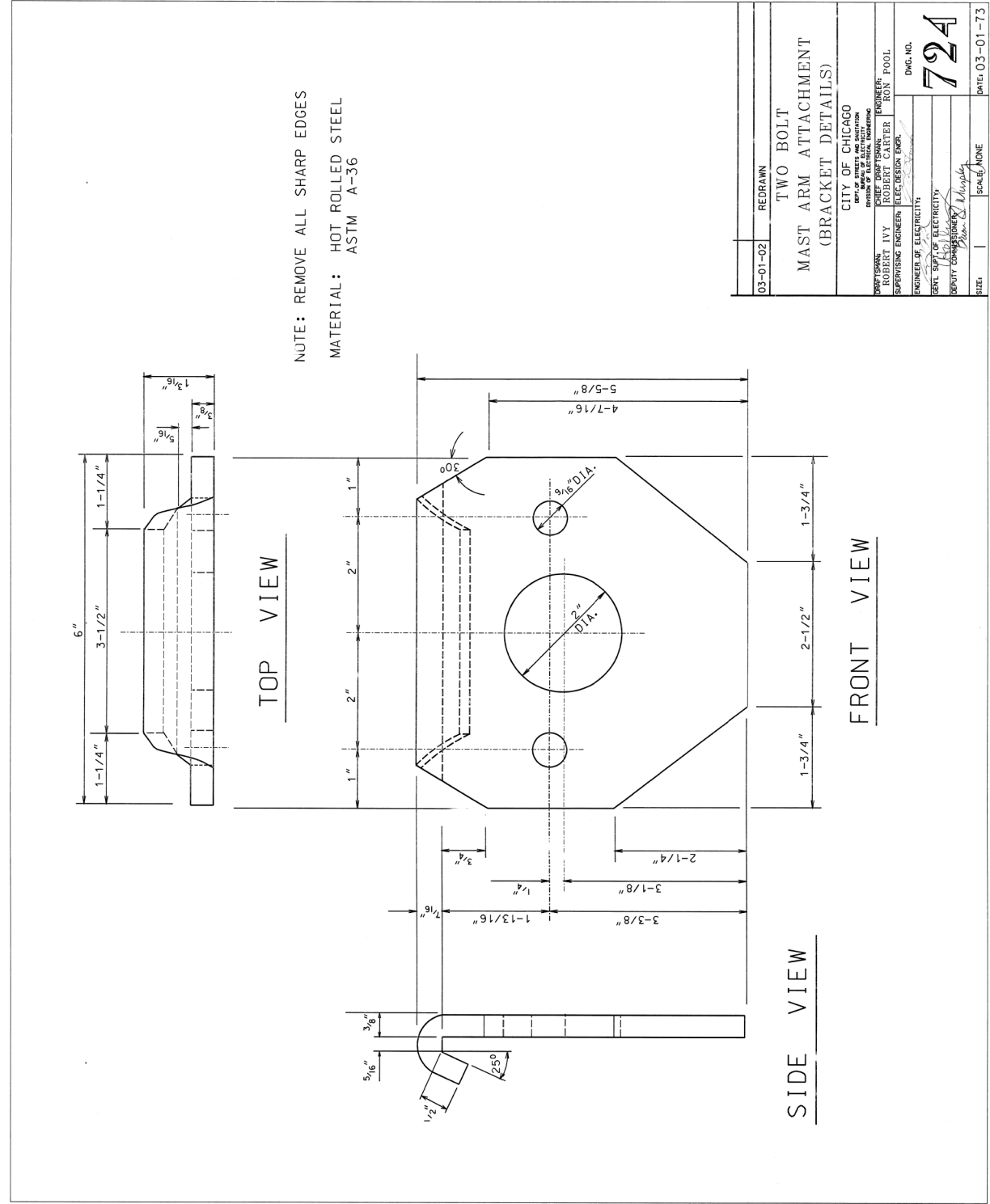
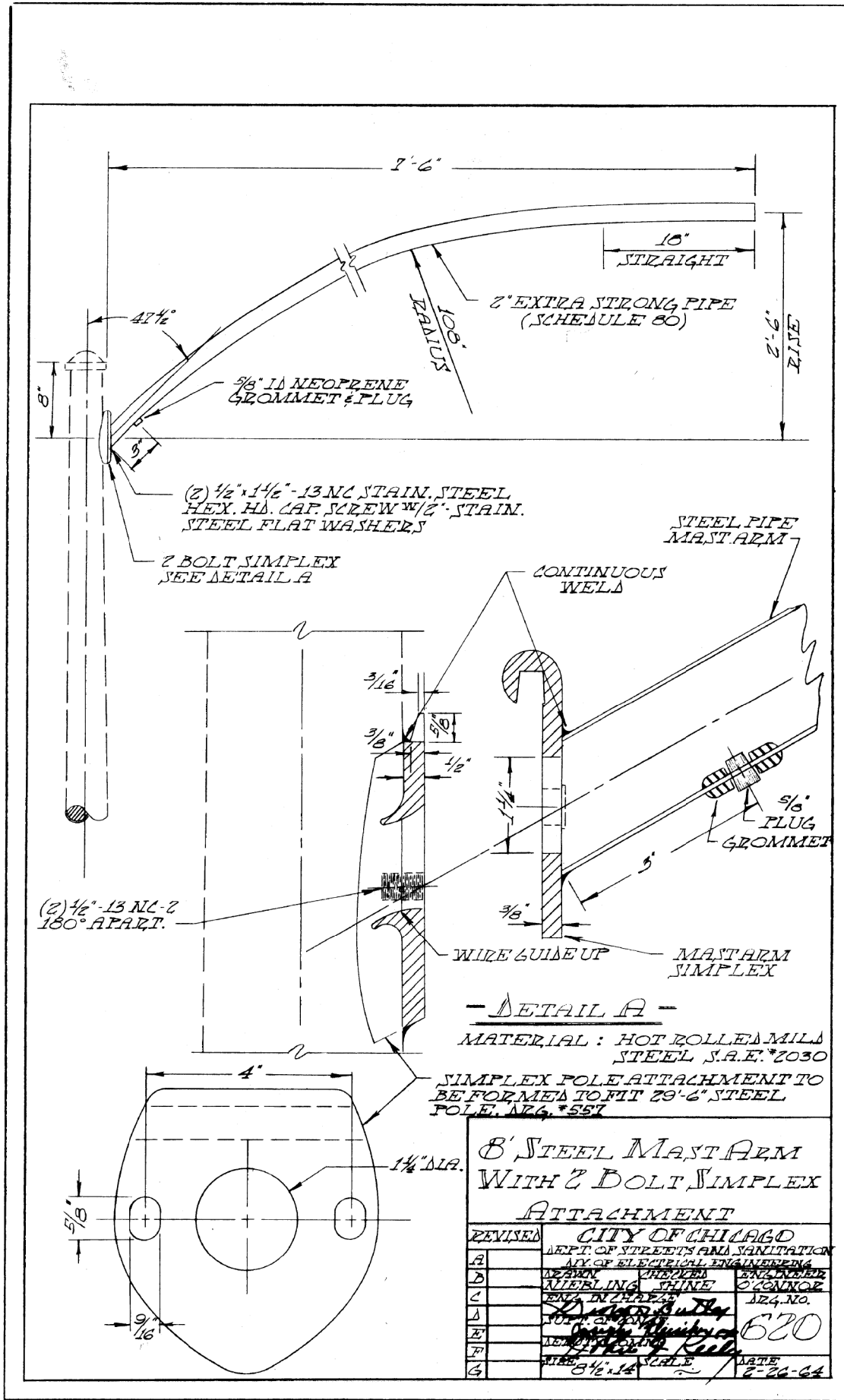


FILE PATH = p:\388035\pmt\l\ecommon\line\local\p\MECD\00\Documents\01_Americas\Transportation\62629938_Circle\Phase_1\1\000_CAD\015_Electrical\Sheets\60W26_Contract\160W26-sht-Light-15



03-01-02	REDRAWN	TWO BOLT MAST ARM ATTACHMENT (BRACKET DETAILS)
CITY OF CHICAGO	DEPT. OF STREETS AND SANITATION	ENGINEER
DESIGNED BY	ILLY	ROD POOL
SUPERVISING ENGINEER	RECEIVED FOR	DWG. NO.
ENGINEER OF ELECTRICITY	DATE	72A
SCALE	NONE	DATE: 03-01-73



D160W26-sht-Light-15
 USER NAME = myersc
 PLOT SCALE = 1:8000 / 1"
 PLOT DATE = 8/15/2013

DESIGNED -	WDS	REVISED -	
DRAWN -	CAM	REVISED -	
CHECKED -	WDS	REVISED -	
DATE -	8/20/13	REVISED -	

STATE OF ILLINOIS
 DEPARTMENT OF TRANSPORTATION

MISCELLANEOUS ELECTRICAL DETAILS
 SCALE: N.T.S. SHEET 15 OF 22 SHEETS STA. TO STA.

F.A.I. RTE.	SECTION	COUNTY	TOTAL SHEETS	SHEET NO.
90/94/290	2013-008R	COOK	559	238
CONTRACT NO. 60W26				
ILLINOIS FED. AID PROJECT				