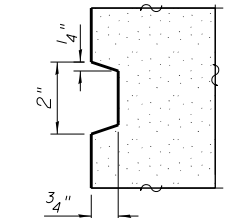


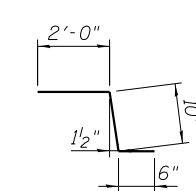
SECTION C-C

NOTES:

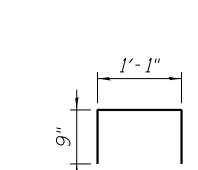
See sheet S1-23 of S1-48 for Detail A.
 Approach slab and parapet concrete shall be paid for as Concrete Superstructure.
 Approach footing concrete shall be paid for as Concrete Structures.
 Reinforcement shall be paid for as Reinforcement Bars, Epoxy Coated.
 For v200(E) bar details, see sheet S1-36.
 The approach footing maximum applied service bearing pressure (Q_{max}) = 2.0 ksf.
 Cost of excavation for approach footing included with Concrete Structures.
 For bar splicer details, see sheet S1-45.
 For Granular Backfill for Structures details, see sheet S1-03.



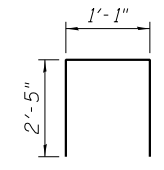
REVEAL DETAIL



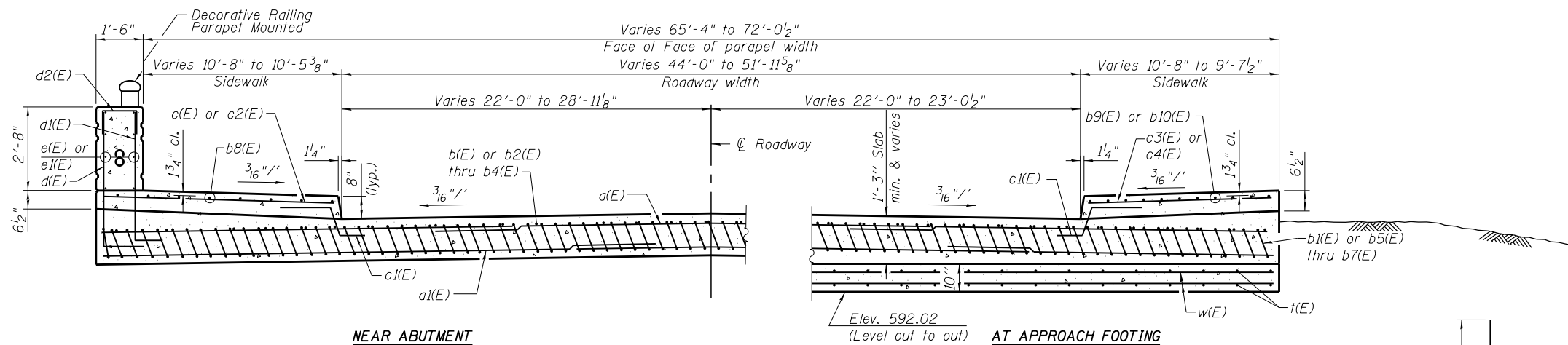
BAR c1(E)



BAR d2(E)



BAR d3(E)

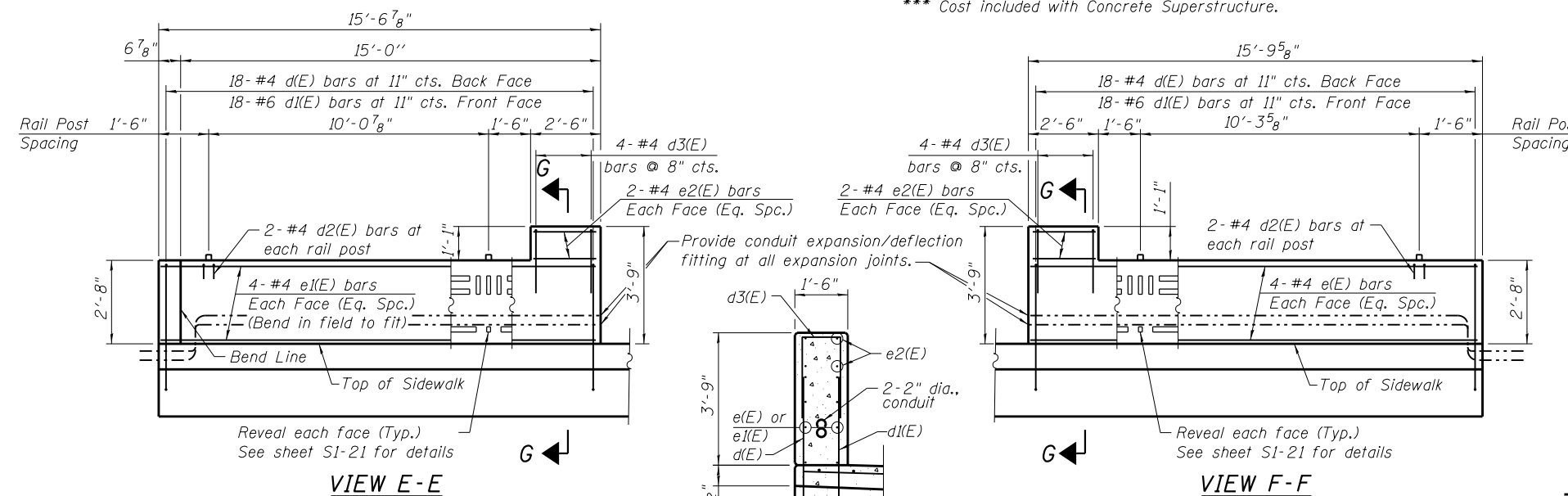


SECTION D-D

(See Plan for dimensions not shown)

* Tilt #9 b1(E) or b5(E) thru b7(E) bars as required to maintain clearance.

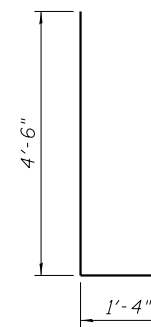
*** Cost included with Concrete Superstructure.



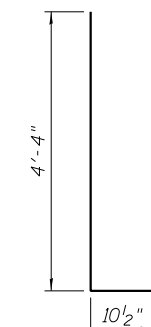
VIEW E-E

VIEW F-F

SECTION G-G



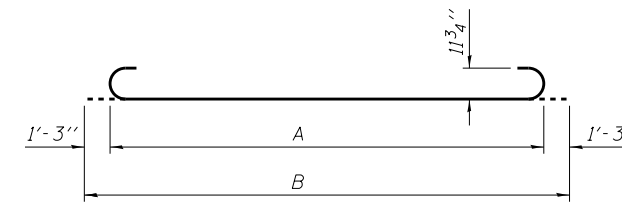
BAR d(E)



BAR d1(E)

A & B Dimensions

| Bar | A | B |
|-------|--------|--------|
| b1(E) | 27'-3" | 29'-9" |
| b5(E) | 30'-7" | 33'-1" |
| b6(E) | 12'-2" | 14'-8" |
| b7(E) | 13'-3" | 15'-9" |



BARS

BILL OF MATERIAL

| Bar | No. | Size | Length | Shape |
|----------------------------------|-----|---------|-----------|-------|
| a(E) | 66 | #4 | 30'-2" | — |
| a1(E) | 123 | #5 | 30'-7" | — |
| b(E) | 53 | #4 | 29'-8" | — |
| b1(E) | 157 | #9 | 29'-9" | — |
| b2(E) | 2 | #4 | 15'-2" | — |
| b3(E) | 2 | #4 | 15'-5" | — |
| b4(E) | 5 | #4 | 33'-1" | — |
| b5(E) | 13 | #9 | 33'-1" | — |
| b6(E) | 4 | #9 | 14'-8" | — |
| b7(E) | 4 | #9 | 15'-9" | — |
| b8(E) | 8 | #5 | 33'-2" | — |
| b9(E) | 10 | #5 | 30'-5" | — |
| b10(E) | 1 | #5 | 18'-0" | — |
| c(E) | 18 | #5 | 11'-5" | — |
| c1(E) | 64 | #5 | 3'-4" | — |
| c2(E) | 15 | #5 | 13'-5" | — |
| c3(E) | 16 | #5 | 12'-5" | — |
| c4(E) | 15 | #5 | 10'-6" | — |
| d(E) | 36 | #4 | 5'-10" | — |
| d1(E) | 36 | #6 | 5'-2 1/2" | — |
| d2(E) | 8 | #4 | 2'-7" | — |
| d3(E) | 8 | #4 | 5'-11" | — |
| e(E) | 8 | #4 | 15'-5" | — |
| e1(E) | 8 | #4 | 15'-2" | — |
| e2(E) | 8 | #4 | 2'-2" | — |
| t(E) | 176 | #4 | 9'-8" | — |
| w(E) | 120 | #5 | 31'-4" | — |
| Concrete Superstructure | | Cu. Yd. | 129 | |
| Concrete Structures | | Cu. Yd. | 28 | |
| Reinforcement Bars, Epoxy Coated | | Pound | 31550 | |
| Protective Coat | | Sq. Yd. | 286 | |
| Bridge Deck Grooving | | Sq. Yd. | 160 | |

0161713-60W26-S24-Appr Slab



USER NAME = dunkerleyb
 PLOT SCALE = N.T.S.
 PLOT DATE = 9/15/2013

DESIGNED - EJO
 CHECKED - ATB
 DRAWN - BRD
 CHECKED - EJO

REVISED
 REVISED
 REVISED
 REVISED

STATE OF ILLINOIS
 DEPARTMENT OF TRANSPORTATION

WEST APPROACH SLAB DETAILS
 STRUCTURE NO. 016-1713

SHEET NO. S1-24 OF S1-48 SHEETS

| F.A.I. RTE. | SECTION | COUNTY | TOTAL SHEETS | SHEET NO. |
|---------------------------|-----------|--------|--------------|-----------|
| 90/94/290 | 2013-00BR | COOK | 559 | 274 |
| CONTRACT NO. | | | 60W26 | |
| ILLINOIS FED. AID PROJECT | | | | |