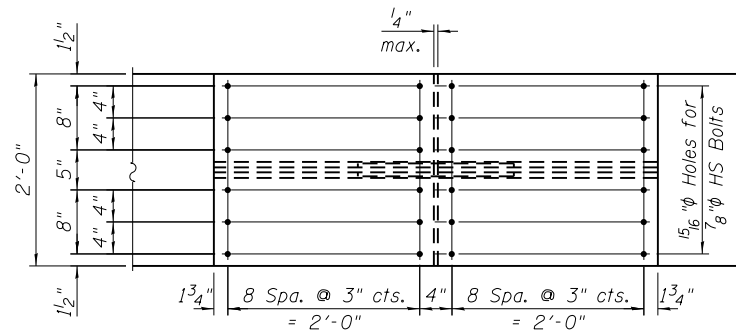
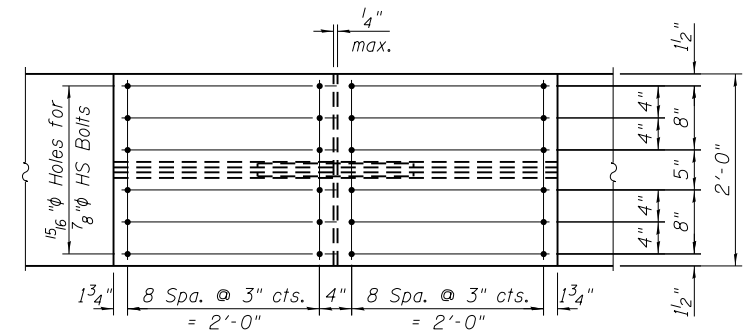


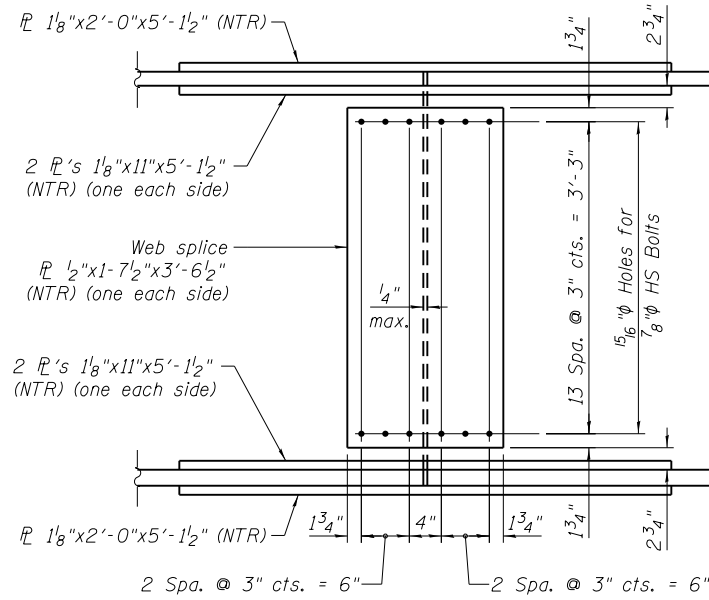
TOP FLANGE



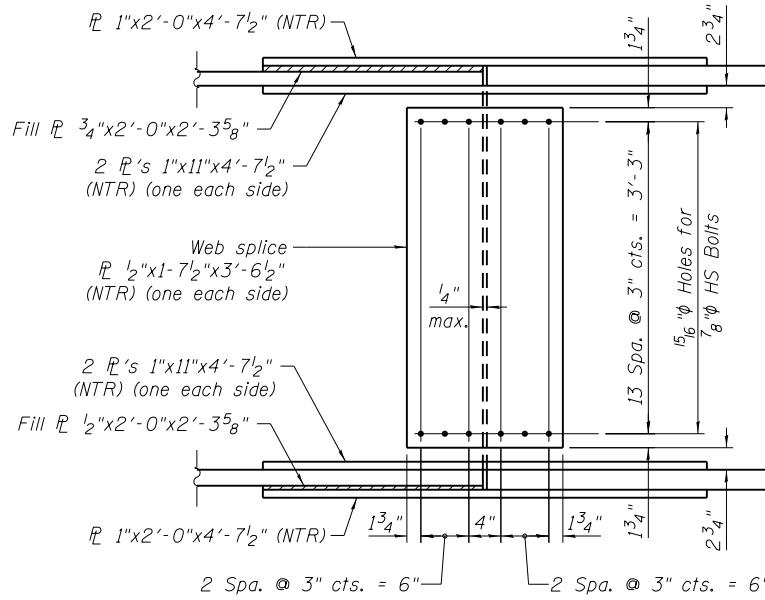
TOP FLANGE



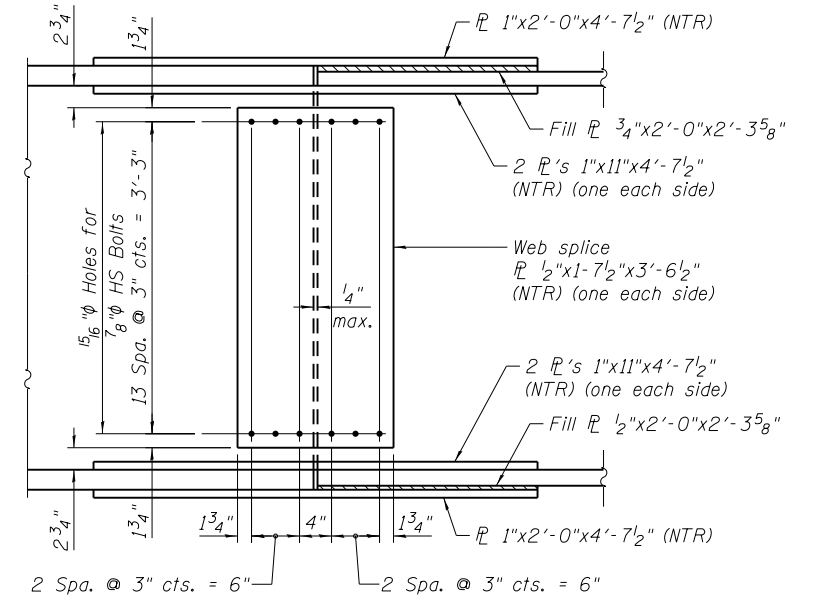
TOP FLANGE



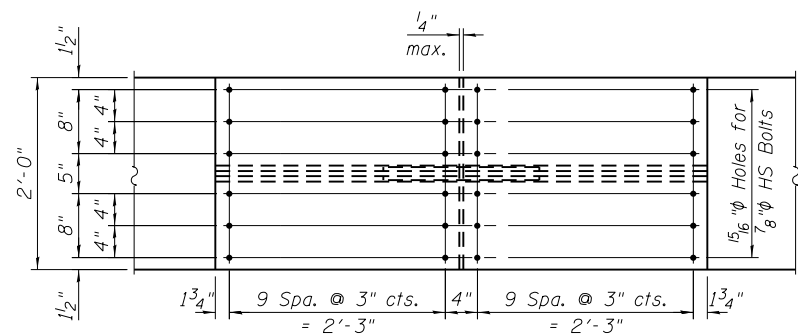
ELEVATION



ELEVATION



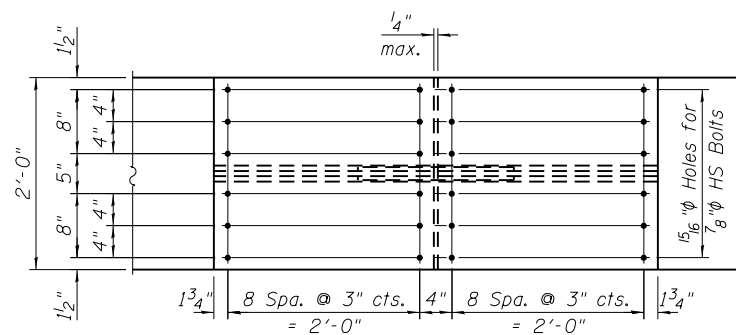
ELEVATION



BOTTOM FLANGE

SPLICE 1 & 4 DETAIL

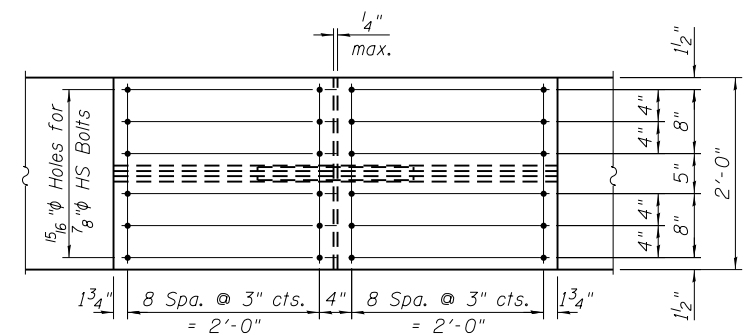
(24 Required)



BOTTOM FLANGE

SPLICE 2 DETAIL

(12 Required)



BOTTOM FLANGE

SPLICE 3 DETAIL

(12 Required)

NOTES:

- All structural steel shall be AASHTO M270 Grade 50 - galvanized.
- Load carrying components designated "NTR" shall conform to the Impact Testing Requirement, Zone 2.

0161713-60W26-S30-SuperStruct



USER NAME = dunkerleyb	DESIGNED - EJO	REVISED
PLOT SCALE = N.T.S.	CHECKED - ATB	REVISED
PLOT DATE = 9/15/2013	DRAWN - BRD	REVISED
	CHECKED - EJO	REVISED

STATE OF ILLINOIS  
DEPARTMENT OF TRANSPORTATION

GIRDER BOLTED FIELD SPLICE DETAILS  
STRUCTURE NO. 016-1713

SHEET NO. S1-30 OF S1-48 SHEETS

F.A.I. R.T.E. 90/94/290	SECTION 2013-00BR	COUNTY COOK	TOTAL SHEETS 559	SHEET NO. 280
CONTRACT NO. 60W26			ILLINOIS FED. AID PROJECT	