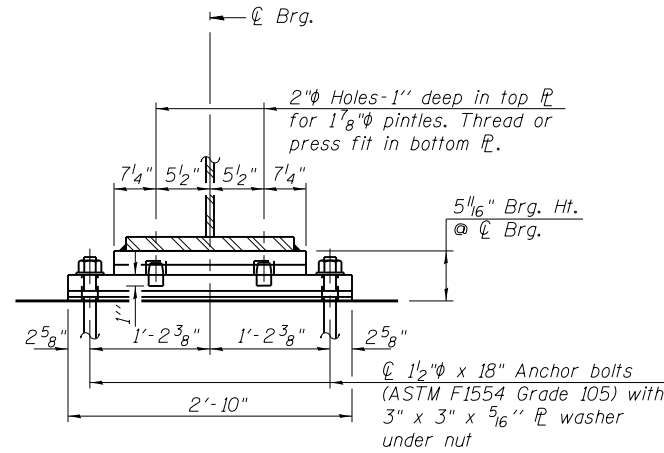


ELEVATION AT PIER

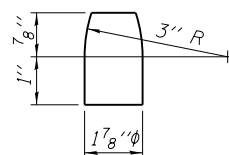


SECTION C-C

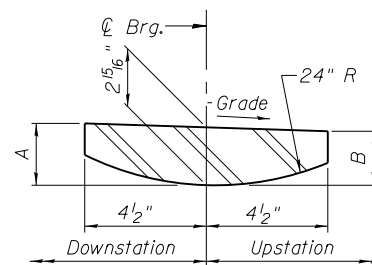
BEVELED TOP FLANGE DIMENSIONS

Girder No.	A	B	Grade
1	3 1/6"	2 13/16"	-2.24%
2	3"	2 7/8"	-2.02%
3	3"	2 7/8"	-1.79%
4	3"	2 7/8"	-1.56%
5	3"	2 7/8"	-1.34%
6	3"	2 7/8"	-1.11%
7	3"	2 7/8"	-0.88%
8	2 15/16"	2 15/16"	-0.66%
9	2 15/16"	2 15/16"	-0.43%
10	2 15/16"	2 15/16"	-0.20%
11	2 15/16"	2 15/16"	0.03%
12	2 15/16"	2 15/16"	0.25%

FIXED BEARING - PIER



PINTLE



BEVELED TOP FLANGE DETAIL

NOTES:

- Anchor bolts at fixed bearings may be either cast in place or installed in holes drilled after the supported member is in place.
- Fixed Bearing Assembly included in "Furnishing and Erecting Structural Steel."
- The structural steel plates and pintles shall conform to the requirements of AASHTO M270 Grade 50.
- Anchor bolts shall be ASTM F1554 all-thread (or an Engineer-approved alternate material) of the grade(s) and diameter(s) specified. The corresponding specified grade of AASHTO M314 anchor bolts may be used in lieu of ASTM F1554.
- Drilled and set anchor bolts shall be installed according to Article 521.06 of the Standard Specifications.
- Two 1/8 in. adjusting shims shall be provided for each bearing in addition to all other plates or shims and placed as shown on bearing details.
- All (embedded and separate) bearing plates, side retainers, anchor bolts, nuts, washers and pintles shall be galvanized according to AASHTO M111 or M232 as applicable.

SHIM PLATE THICKNESS TABLE

Location	G1	G2	G3	G4	G5	G6	G7	G8	G9	G10	G11	G12
West Abut.	1/4"	-	3/8"	-	3/8"	-	-	-	-	-	-	-
Pier	-	-	-	-	-	-	-	-	-	-	-	-
East Abut.	-	-	-	-	-	-	-	-	-	-	-	-

BILL OF MATERIAL

Item	Unit	Total
Anchor Bolts, 1 1/2"	Each	24

0161713-60W26-S33-Bearing



USER NAME = dunkerleyb	DESIGNED - EJO	REVISED
	CHECKED - ATB	REVISED
PLOT SCALE = N.T.S.	DRAWN - BRD	REVISED
PLOT DATE = 9/15/2013	CHECKED - EJO	REVISED

**STATE OF ILLINOIS
DEPARTMENT OF TRANSPORTATION**

**FIXED BEARING DETAILS
STRUCTURE NO. 016-1713**

SHEET NO. S1-33 OF S1-48 SHEETS

F.A.I. RTE.	SECTION	COUNTY	TOTAL SHEETS	SHEET NO.
90/94/290	2013-008R	COOK	559	283
CONTRACT NO.			60W26	
ILLINOIS FED. AID PROJECT				