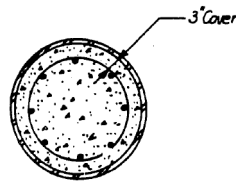
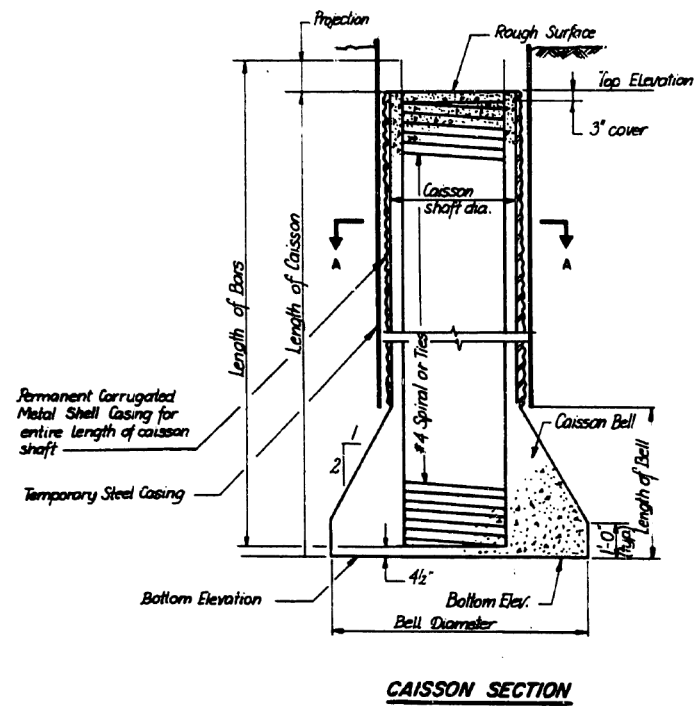


FOR INFORMATION ONLY

FEDERAL AID DISTRICT NO.	SECTION	COUNTY	TOTAL SHEETS	SHEET NO.
90/94	#	COOK	79	79 B
TO STA.				
FED. AID DIST. NO.	ALLIANCE	FED. AID PROJECT		
		# 1985-080 R		



SECTION A-A
(Temporary Steel Casing not shown in section A-A)

Notes:

- 1) Specific details for caissons as shown in the caisson section can be found on the following sheets:
 Sheet Ent 12 for Taylor Street Exit Ramp Bent Nos. 3 & 4
 Sheet ENT 12 for Taylor Street Entrance Ramp Bent Nos. 1 & 2
 Sheet ENT 13 for Taylor Street Entrance Ramp Bent Nos. 3 & 4
 Sheet S4 for Harrison Street Bridge Pier Nos. 1 & 2
 Sheet EN2 for Ramp E-N Pier Nos. 27 & 28
- 2) Annular space between the temporary casing and permanent metal shell shall be back filled with grout before removing the temporary casing.

SHEET MD 8 OF 8

REVISIONS	
Name	Date

STATE OF ILLINOIS
 DEPARTMENT OF TRANSPORTATION
 P.A.I. ROUTE 90/94 (DAN RYAN EXPRESSWAY)
 SECTION 885-080 R - COOK COUNTY
 ROADWAY GRADING AND PAVING
 MISCELLANEOUS DETAILS - ALL STRUCTURES
 TYPICAL CAISSON DETAILS
 Scale: NONE Drawn By: D. S.
 Date: AUG. 14, 1987 Checked By: W.P.N.
 ENVIRONMENTAL ENGINEERS INC.
 Chicago, Illinois

△ New sheet 12-7-87

STATE OF ILLINOIS
 DEPARTMENT OF TRANSPORTATION

EXISTING AS-BUILTS SN 016-1087

SCALE: NTS SHEET AS-18 OF AS-62 SHEETS STA. TO STA.

F.A.I. RTE.	SECTION	COUNTY	TOTAL SHEETS	SHEET NO.
90/94/290	2013-008R	COOK	559	316
CONTRACT NO. 60W26				
ILLINOIS FED. AID PROJECT				

FILE PATH = C:\Projects\15-0820 - Circle 60W26 As-Built\Final\016W26-sht-AS-BUILT-18.dgn

DESIGNED -	REVISED -
DRAWN -	REVISED -
CHECKED -	REVISED -
DATE - 07/15/13	REVISED -

D160W26-sht-AS-BUILT-18.dgn
 USER NAME = auyeungh
 PLOT SCALE = 1.0000' / in.
 PLOT DATE = 8/16/2013