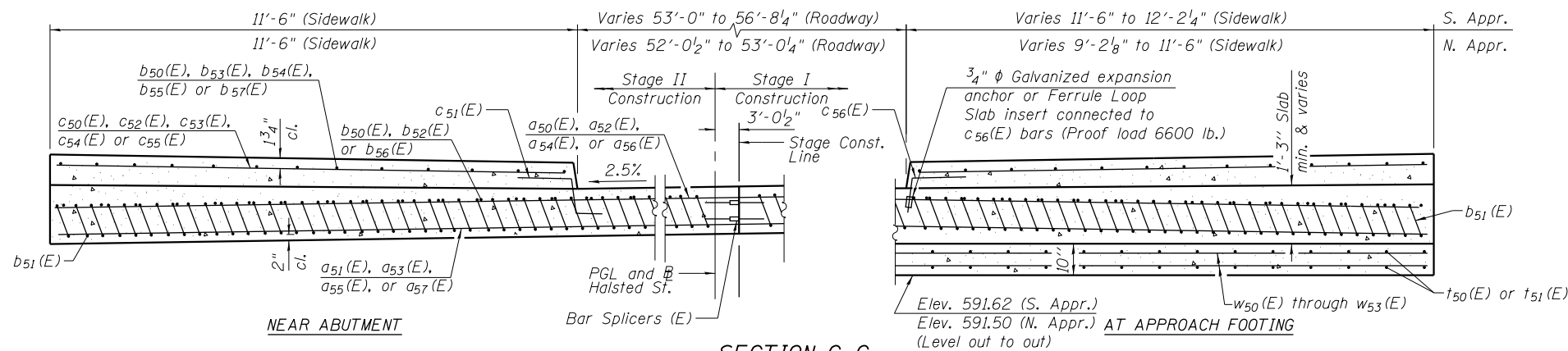


SECTION B-B



SECTION C-C

* Tilt #9 b₁(E) bars as required to maintain clearance.

*** Cost included with Concrete Superstructure.

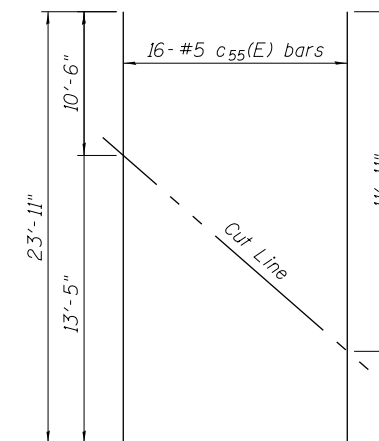
(See Plan for dimensions not shown)

Notes:
 Approach slab and sidewalk concrete shall be paid for as Concrete Superstructure.
 Approach footing concrete shall be paid for as Concrete Structures.
 Reinforcement shall be paid for as Reinforcement Bars, Epoxy Coated.
 For v₁₀₀(E) and v₇₀₀(E) bar details and for Granular Embankment for Structures, see Sheet S2-53 and S2-56 of S2-81.
 For drainage treatment details, see sheets S2-54 and S2-57 of S2-81.
 The approach footing maximum applied service bearing pressure (Q_{max}) = 2.0 ksf.
 For bar splicer details, see sheet S2-73 of S2-81.
 Cost of excavation for approach footing included with Concrete Structures.
 The cost of expansion anchors/inserts is included in the cost of Reinforcement Bars, Epoxy Coated.
 For lightpole foundation details, see Lighting Plans.

Minimum Bar Laps	
Bar	Lap
#4	2'-7"
#5	3'-3"
#6	3'-10"
#7	5'-2"
#8	6'-9"

**SOUTH APPROACH
BILL OF MATERIAL**

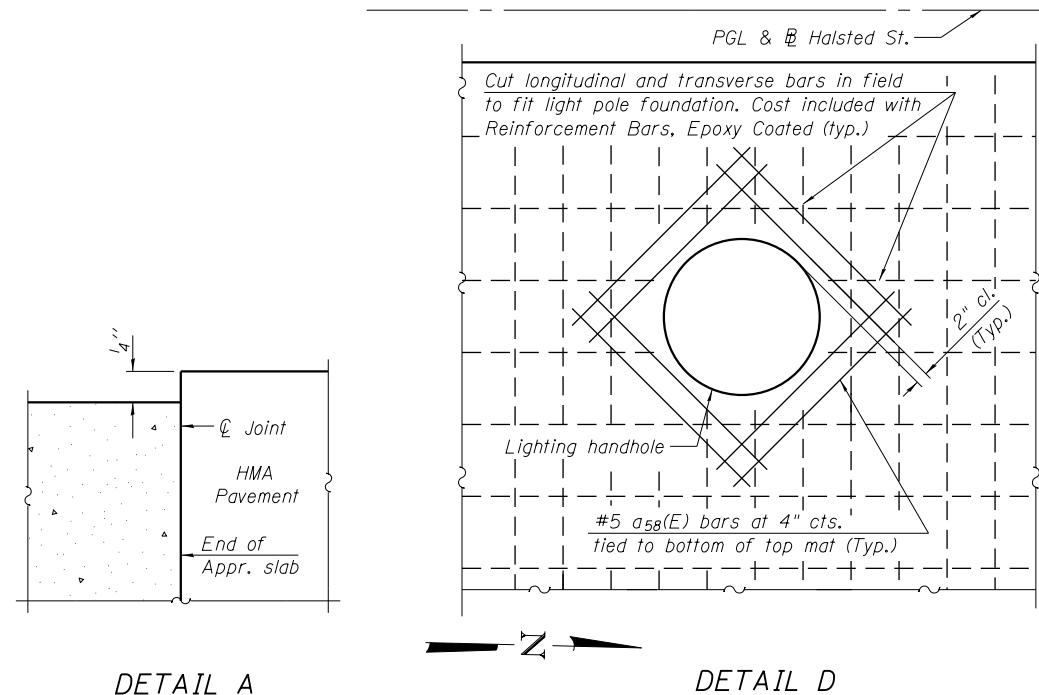
Bar	No.	Size	Length	Shape
a ₅₀ (E)	50	#4	23'-11"	—
a ₅₁ (E)	92	#5	24'-3"	—
a ₅₂ (E)	50	#4	27'-8"	—
a ₅₃ (E)	92	#5	28'-1"	—
a ₅₈ (E)	8	#5	3'-8"	—
b ₅₀ (E)	62	#4	29'-9"	—
b ₅₁ (E)	194	#9	29'-9"	—
b ₅₂ (E)	5	#4	32'-11"	—
b ₅₃ (E)	1	#5	32'-7"	—
b ₅₄ (E)	13	#5	29'-9"	—
b ₅₅ (E)	11	#5	32'-9"	—
c ₅₀ (E)	31	#5	13'-9"	—
c ₅₁ (E)	31	#5	2'-4"	—
c ₅₂ (E)	21	#5	15'-2"	—
c ₅₃ (E)	10	#5	15'-0"	—
c ₅₆ (E)	31	#5	2'-1"	—
t ₅₀ (E)	164	#4	11'-10"	—
w ₅₀ (E)	80	#5	24'-3"	—
w ₅₁ (E)	80	#5	28'-1"	—
Concrete Superstructure		Cu. Yd.	128.7	
Concrete Structures		Cu. Yd.	30.5	
Reinforcement Bars, Epoxy Coated		Pound	35,300	



FIELD CUTTING DIAGRAM
Order c₅₅(E) bars full length

**NORTH APPROACH
BILL OF MATERIAL**

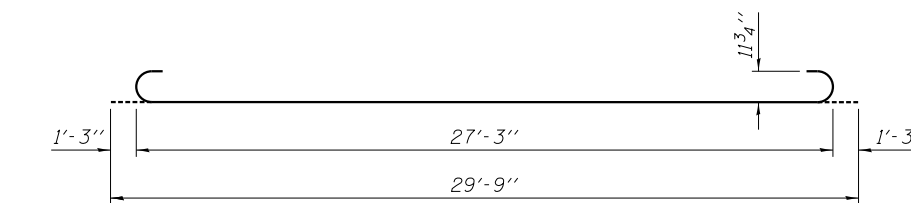
Bar	No.	Size	Length	Shape
a ₅₄ (E)	50	#4	23'-5"	—
a ₅₅ (E)	92	#5	23'-9"	—
a ₅₆ (E)	50	#4	24'-6"	—
a ₅₇ (E)	92	#5	24'-10"	—
a ₅₈ (E)	8	#5	3'-8"	—
b ₅₀ (E)	59	#4	29'-9"	—
b ₅₁ (E)	183	#9	29'-9"	—
b ₅₄ (E)	12	#5	29'-9"	—
b ₅₆ (E)	4	#4	29'-2"	—
b ₅₈ (E)	15	#5	29'-0"	—
c ₅₁ (E)	31	#5	2'-4"	—
c ₅₄ (E)	31	#5	12'-5"	—
c ₅₅ (E)	16	#5	23'-11"	—
c ₅₆ (E)	31	#5	2'-1"	—
t ₅₁ (E)	150	#4	11'-9"	—
w ₅₂ (E)	80	#5	23'-9"	—
w ₅₃ (E)	80	#5	22'-11"	—
Concrete Superstructure		Cu. Yd.	121.7	
Concrete Structures		Cu. Yd.	26.9	
Reinforcement Bars, Epoxy Coated		Pound	32,900	



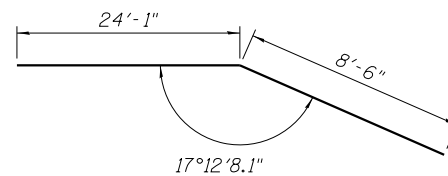
DETAIL A

DETAIL D

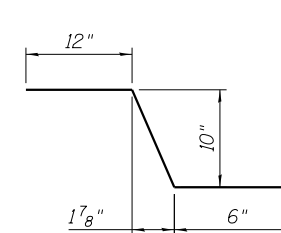
Detail shown for lightpole foundation at Station 3838+25.
Lightpole foundation at Station 3832+90 similar.



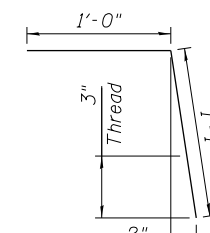
BAR b₅₁(E)



BAR b₅₂(E)



BAR c₅₁(E)



BAR c₅₆(E)

4:33:02 PM 0161716-60W26-S035-Appr.Slab_Details2.dgn



USER NAME = rlschultz	DESIGNED - DJG	REVISED
PLOT SCALE = 0:1.0000 ' / in.	CHECKED - WJC	REVISED
PLOT DATE = 9/15/2013	DRAWN - WJC	REVISED
	CHECKED - DJG	REVISED

STATE OF ILLINOIS
DEPARTMENT OF TRANSPORTATION

BRIDGE APPROACH SLAB DETAILS 2
STRUCTURE NO. 016-1716

SHEET NO. S2-35 OF S2-81 SHEETS

F.A.U. RT.:	SECTION	COUNTY	TOTAL SHEETS	SHEET NO.
3730	2013-008R	COOK	559	395
CONTRACT NO.			60W26	
ILLINOIS FED. AID PROJECT				