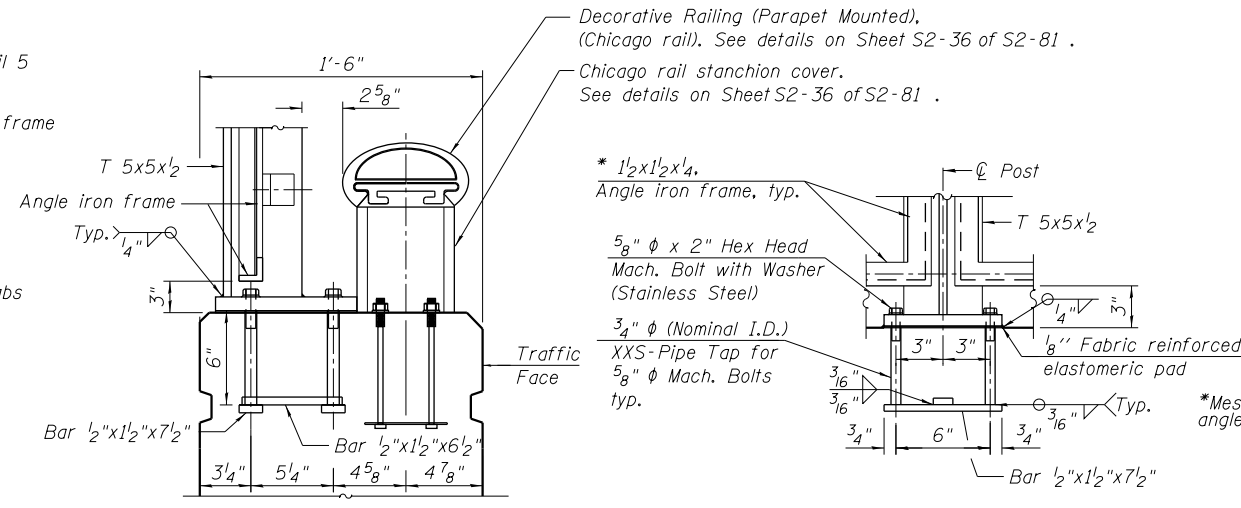
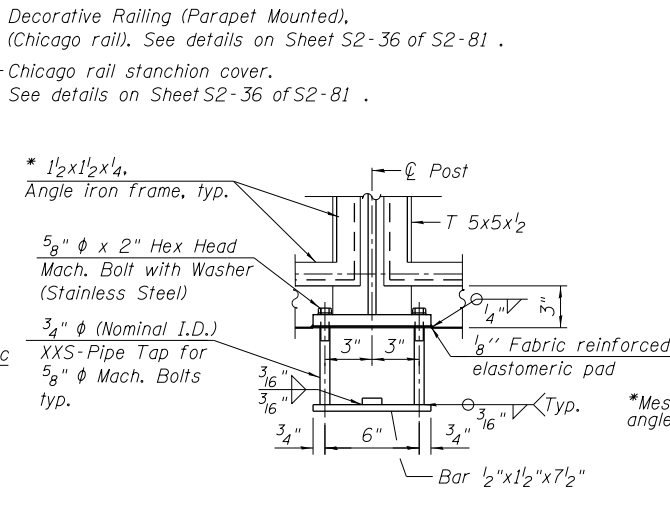


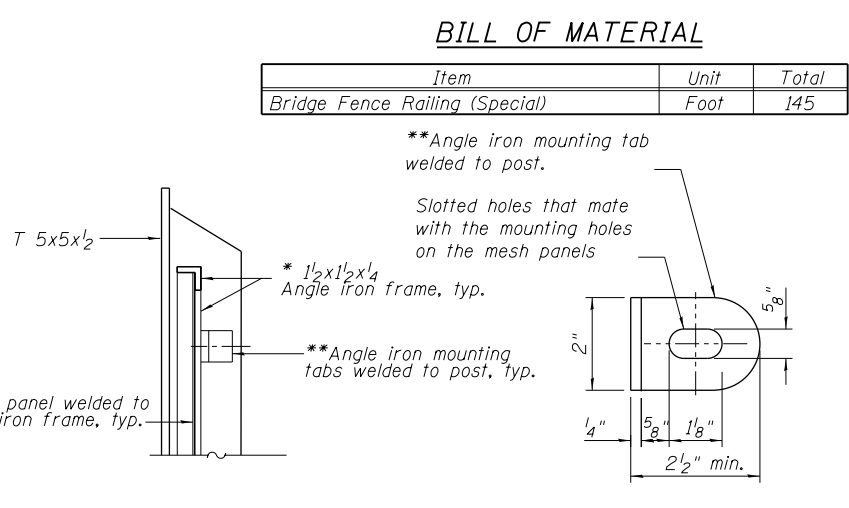
SECTION A-A



DETAIL 1

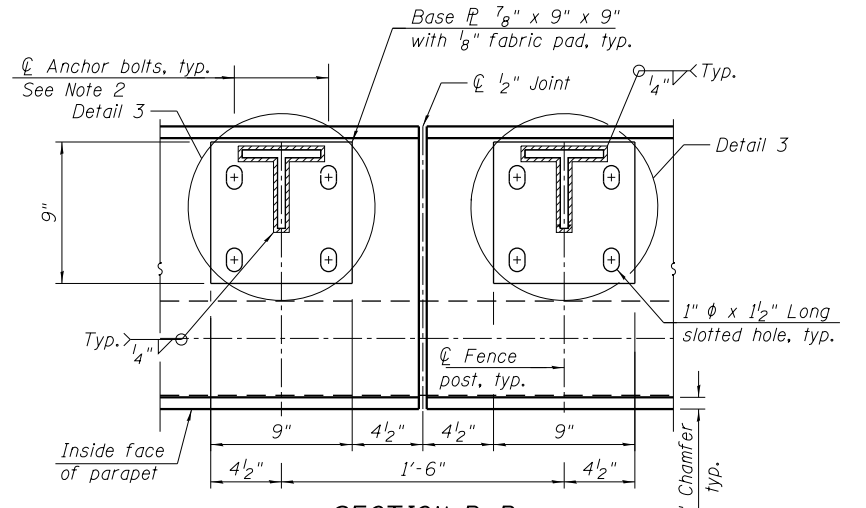


DETAIL 2
ANCHOR BOLT DETAILS

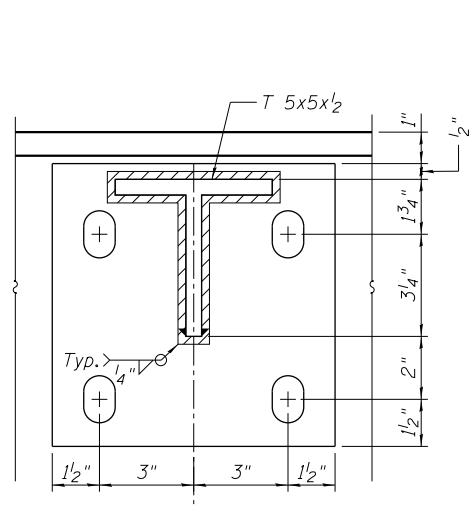


DETAIL 5

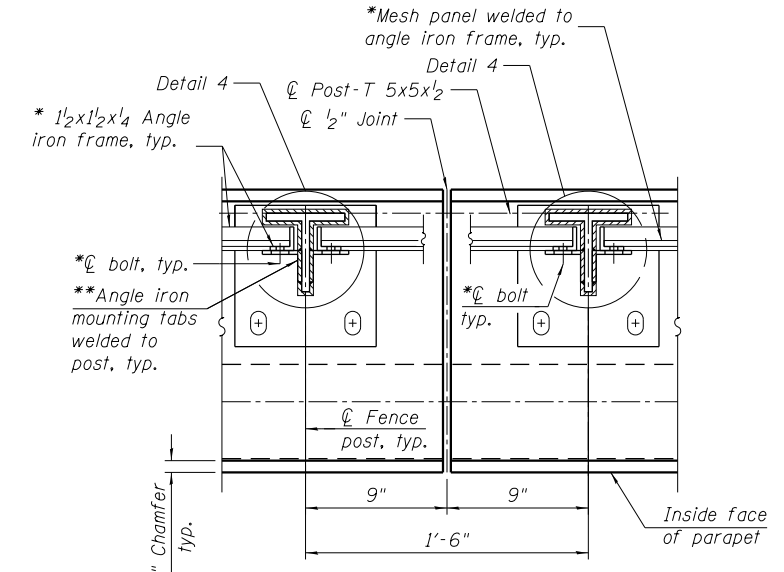
MOUNTING TAB DETAIL



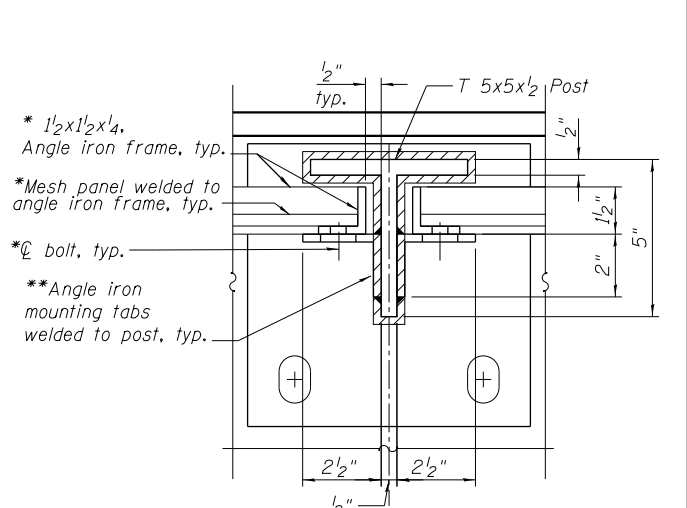
SECTION B-B
BASE PLATE PLAN



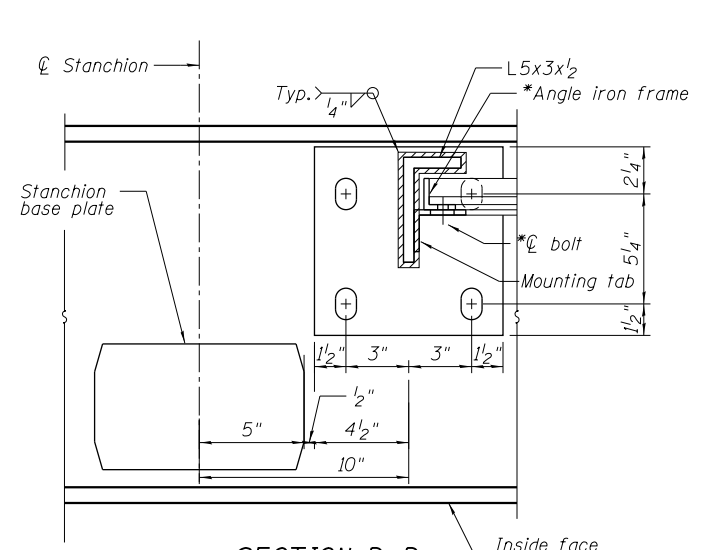
DETAIL 3



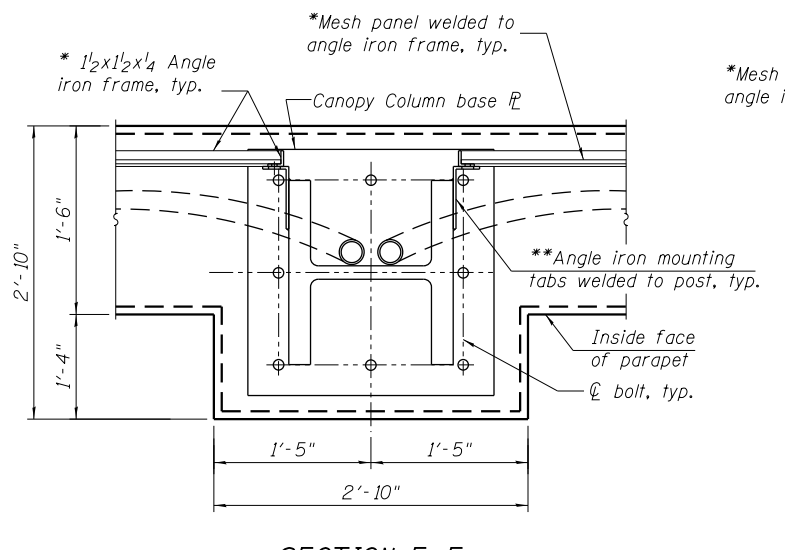
SECTION C-C



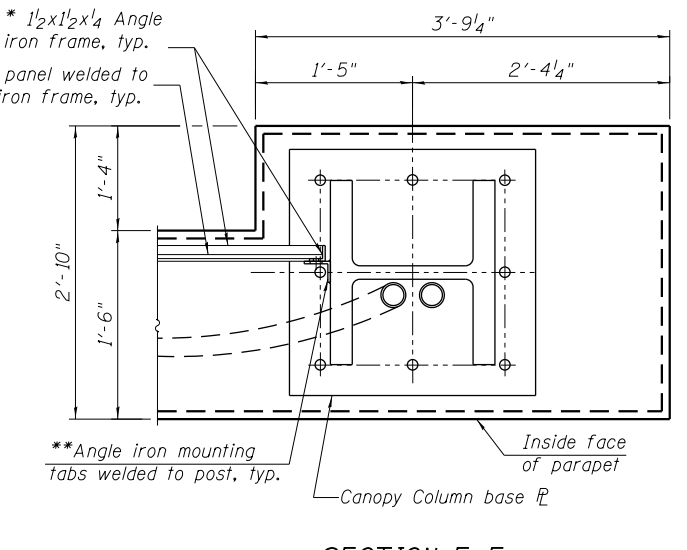
DETAIL 4
PANEL TO POST MOUNTING DETAIL



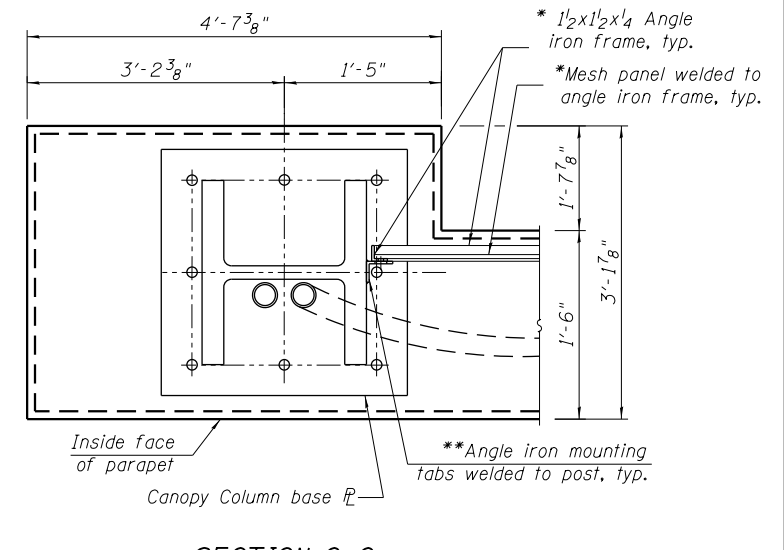
SECTION D-D



SECTION E-E



SECTION F-F



SECTION G-G

BILL OF MATERIAL

Item	Unit	Total
Bridge Fence Railing (Special)	Foot	145

**Angle iron mounting tab welded to post.

Slotted holes that mate with the mounting holes on the mesh panels

Notes:
All steel rail elements shall be Stainless Steel 316.
In lieu of the cast-in-place anchor device shown, the Contractor has the option of drilling and setting 5/8" ϕ anchor rods according to Article 509.06 of the Standard Specifications. Embedment shall be according to the manufacturer's specifications.
Provide bolted connection with oversized slotted hole to allow for erection tolerance of mesh panel and movement at control joints. Spacing between posts may not be the same at bottom and top of frame due to a slight vertical curve at parapet top surface.

* Fence panels and their mounting system, including angles, bracing, bolts and welds to be designed by wire mesh manufacturer. The design shown is based on Banker Architectural. Approved manufacturer can submit their own mounting system for Engineer's review and approval.

**Number, spacing and size of mounting tabs and slotted holes to be verified and designed by fence manufacturer.

4:33:05 PM 0161716-60W26-S037-Railing_FenSpecial.dgn



USER NAME = rlschultz	DESIGNED - WJC	REVISED
PLOT SCALE = 1:6.3300 '1' / in.	CHECKED - MDS	REVISED
PLOT DATE = 9/15/2013	DRAWN - WJC	REVISED
	CHECKED - MDS	REVISED

STATE OF ILLINOIS
DEPARTMENT OF TRANSPORTATION

BRIDGE FENCE RAILING (SPECIAL)
STRUCTURE NO. 016-1716

SHEET NO. S2-37 OF S2-81 SHEETS

F.A.U. RTE.	SECTION	COUNTY	TOTAL SHEETS	SHEET NO.
3730	2013-008R	COOK	559	397
CONTRACT NO.			60W26	
ILLINOIS FED. AID PROJECT				