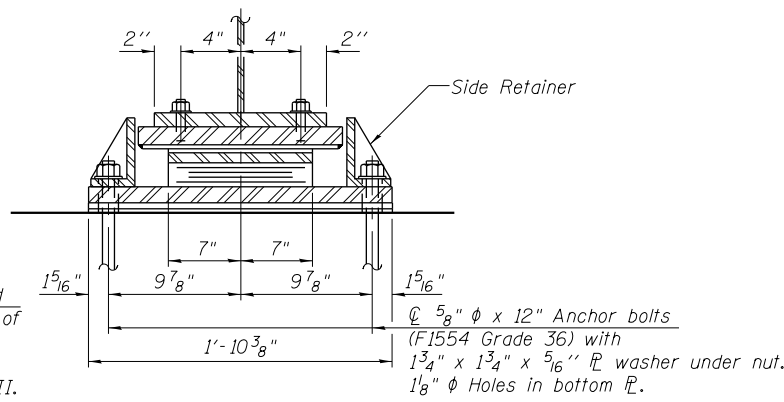
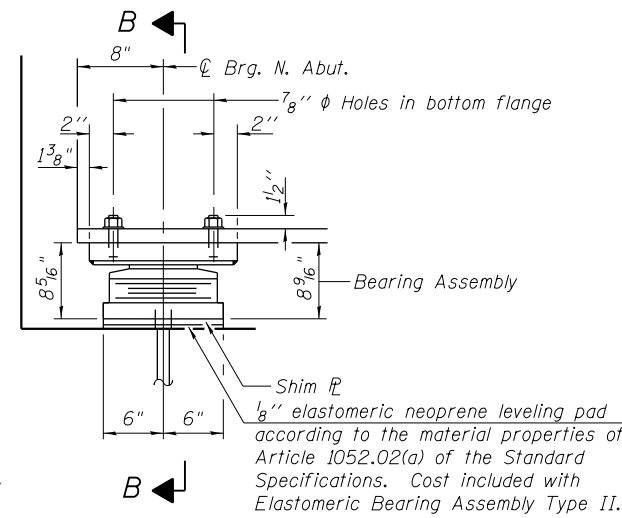


ELEVATION AT ABUT.
(Looking West)

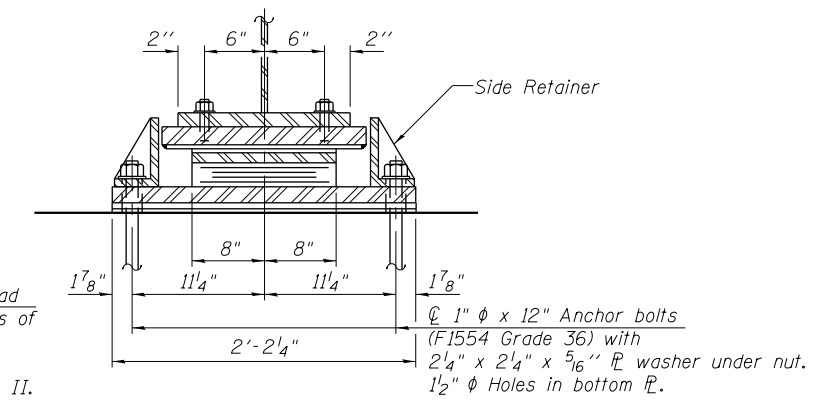


SECTION A-A

TYPE II ELASTOMERIC EXP. BRG.
(at South Abutment)

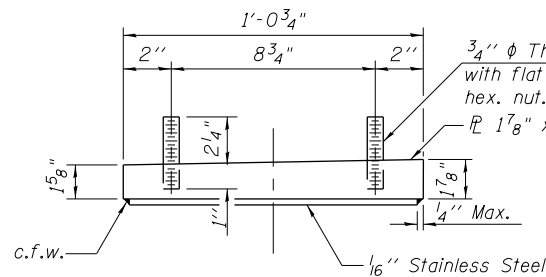


ELEVATION AT ABUT.
(Looking East)

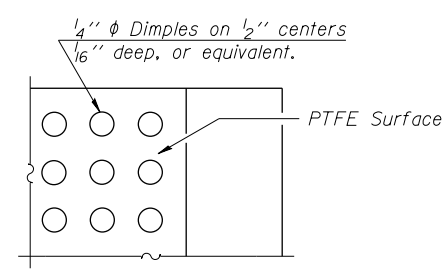


SECTION B-B

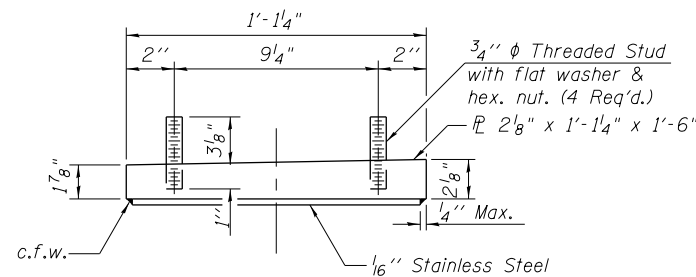
TYPE II ELASTOMERIC EXP. BRG.
(at North Abutment)



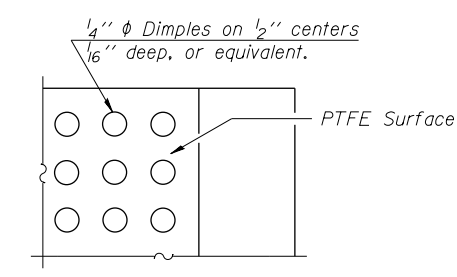
TOP BEARING ASSEMBLY



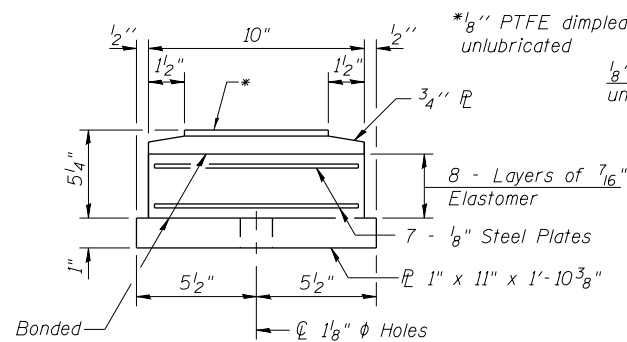
PLAN-PTFE SURFACE



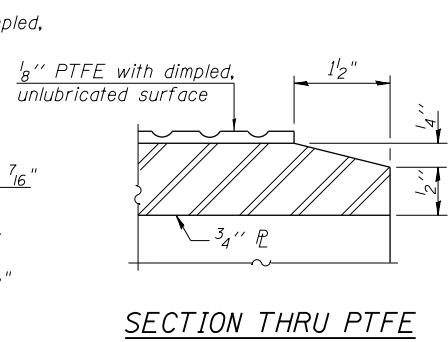
TOP BEARING ASSEMBLY



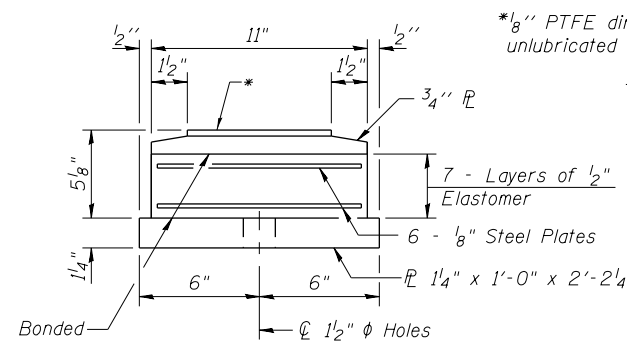
PLAN-PTFE SURFACE



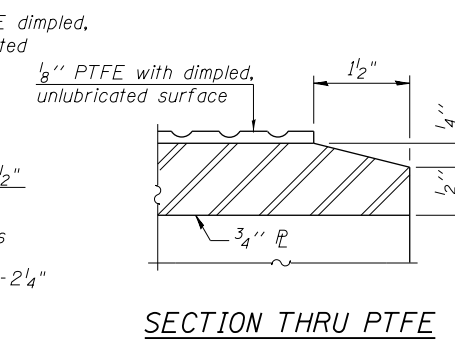
BOTTOM BEARING ASSEMBLY



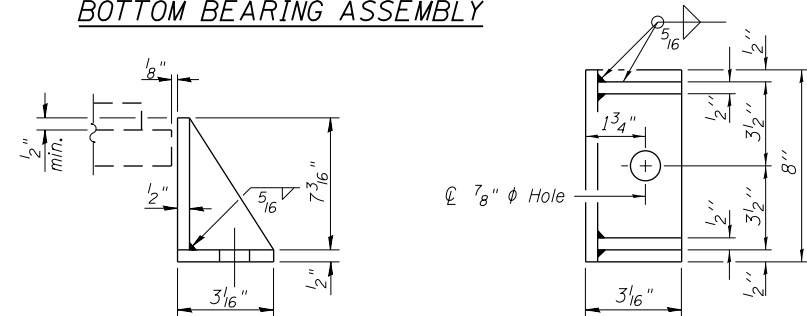
SECTION THRU PTFE



BOTTOM BEARING ASSEMBLY

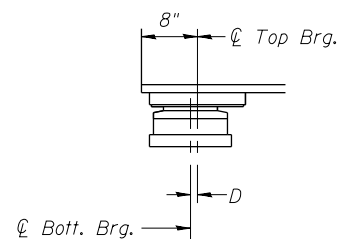


SECTION THRU PTFE



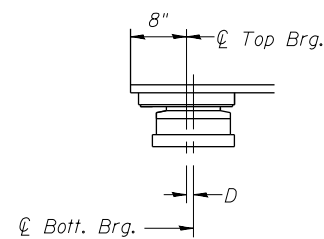
SIDE RETAINER

Equivalent rolled angle with stiffeners will be allowed in lieu of welded plates.



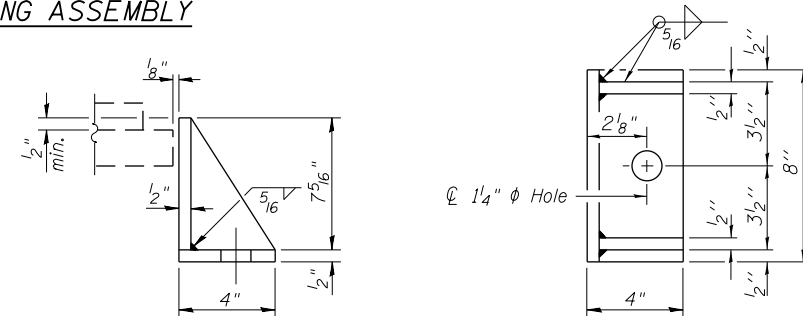
BELOW 50°F.

(Move bott. brg. away from fixed brg.)



ABOVE 50°F.

(Move bott. brg. toward fixed brg.)



SIDE RETAINER

Equivalent rolled angle with stiffeners will be allowed in lieu of welded plates.

SHIM PLATE THICKNESS TABLE

Location	G1	G2	G3	G4	G5	G6	G7	G8	G9	G10	G11	G12	G13	G14	G15
S. Abut.	-	-	-	3/8"	1/2"	5/8"	-	1/4"	-	1/2"	-	-	5/8"	-	1/4"
N. Abut.	-	-	1/4"	-	5/8"	-	5/8"	-	5/8"	-	-	-	-	-	3/8"

Notes:
Anchor bolts shall be ASTM F1554 all-thread (or an Engineer-approved alternate material) of the grade(s) and diameter(s) specified. The corresponding specified grade of AASHTO M314 anchor bolts may be used in lieu of ASTM F1554.
Anchor bolts for Type II bearings shall be placed in holes drilled in the concrete through holes in the bottom bearing plate after members are in place. Side retainers shall be placed after bolts are installed.
Drilled and set anchor bolts shall be installed according to Article 521.06 of the Standard Specifications.
Side retainers and other steel members required for the elastomeric bearing assembly shall be included in the cost of Elastomeric Bearing Assembly, Type II.
The 1/8" PTFE sheet shall be bonded directly to the top steel plate with a two-component, medium viscosity epoxy resin, conforming to the requirements of the Federal Specification MMM-A-134, Type I. The bond agent shall be applied on the full area of the contact surfaces.
Bonding of 1/8" PTFE sheet during vulcanizing process will be permitted provided the process and method of adjusting assembly height is approved by the Engineer.
Two 1/8" adjusting shims shall be provided for each bearing in addition to all other plates or shims and placed as shown on bearing details.
All (embedded and separate) bearing plates, side retainers, anchor bolts, nuts and washers shall be galvanized according to ASTM M111 or M232 as applicable.

BILL OF MATERIAL

Item	Unit	Total
Elastomeric Bearing Assembly Type II	Each	30
Anchor Bolts, 5/8"	Each	30
Anchor Bolts, 1"	Each	30

4:33:23 PM 0161716-60W26-S049-Bearing-AbutDetails.dgn



USER NAME = rlschultz	DESIGNED - JRM	REVISED
PLOT SCALE = 0:1.0000 ' = 1/4" / in.	CHECKED - MDS	REVISED
PLOT DATE = 9/15/2013	DRAWN - MTS	REVISED
	CHECKED - MDS	REVISED

**STATE OF ILLINOIS
DEPARTMENT OF TRANSPORTATION**

**ABUTMENT BEARING DETAILS
STRUCTURE NO. 016-1716**

SHEET NO. S2-49 OF S2-81 SHEETS

F.A.U. RTE.	SECTION	COUNTY	TOTAL SHEETS	SHEET NO.
3730	2013-008R	COOK	559	409
CONTRACT NO.			60W26	
ILLINOIS FED. AID PROJECT				