

STANDARD BAR SPLICER ASSEMBLY

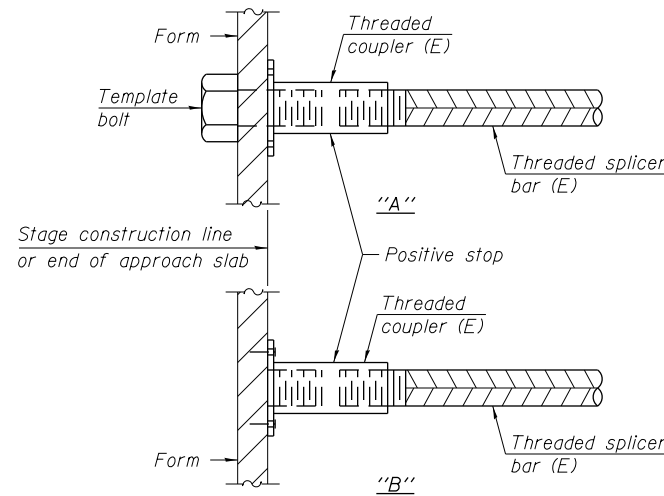
Minimum Lap Lengths						
Bar size to be spliced	Table 1	Table 2	Table 3	Table 4	Table 5	Table 6
3, 4	1'-5"	1'-11"	2'-1"	2'-4"	2'-7"	2'-11"
5	1'-9"	2'-5"	2'-7"	2'-11"	3'-3"	3'-8"
6	2'-1"	2'-11"	3'-1"	3'-6"	3'-10"	4'-5"
7	2'-9"	3'-10"	4'-2"	4'-8"	5'-2"	5'-10"
8	3'-8"	5'-1"	5'-5"	6'-2"	6'-9"	7'-8"
9	4'-7"	6'-5"	6'-10"	7'-9"	8'-7"	9'-8"

- Table 1: Black bar, 0.8 Class C
- Table 2: Black bar, Top bar lap, 0.8 Class C
- Table 3: Epoxy bar, 0.8 Class C
- Table 4: Epoxy bar, Top bar lap, 0.8 Class C
- Table 5: Epoxy bar, Class C
- Table 6: Epoxy bar, Top bar top, Class C

Threaded splicer bar length = min. lap length + 1/2" + thread length

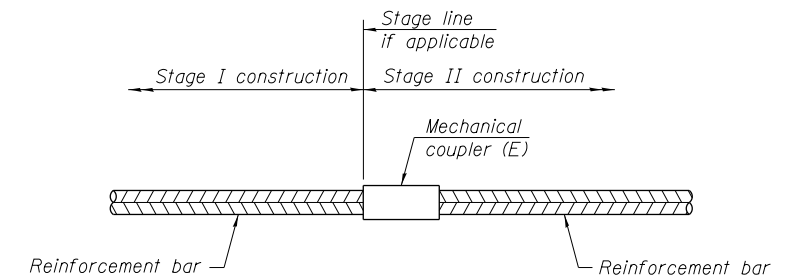
* Epoxy not required on Bar Splicer Assembly components used in conjunction with black bars.

Location	Bar size	No. assemblies required	Table for minimum lap length
Deck	#5	1212	Table 5
South Approach	#4	25	Table 5
South Approach	#5	86	Table 5
North Approach	#4	25	Table 5
North Approach	#5	86	Table 5
South Abutment	#5	80	Table 5
South Abutment	#6	11	Table 5
North Abutment	#5	76	Table 5
North Abutment	#6	11	Table 5
Pier 1	#5	24	Table 5
Pier 1	#7	19	Table 5
Pier 1	#9	12	Table 5
Pier 2	#5	28	Table 5
Pier 2	#6	18	Table 5
Pier 2	#9	12	Table 5
Pier 3	#5	46	Table 5
Pier 3	#6	13	Table 5
Pier 3	#7	5	Table 5
Pier 3	#9	14	Table 5
Pier 4	#5	46	Table 5
Pier 4	#6	13	Table 5
Pier 4	#7	5	Table 5
Pier 4	#9	14	Table 5
Pier 5	#5	28	Table 5
Pier 5	#7	20	Table 5
Pier 5	#10	14	Table 5



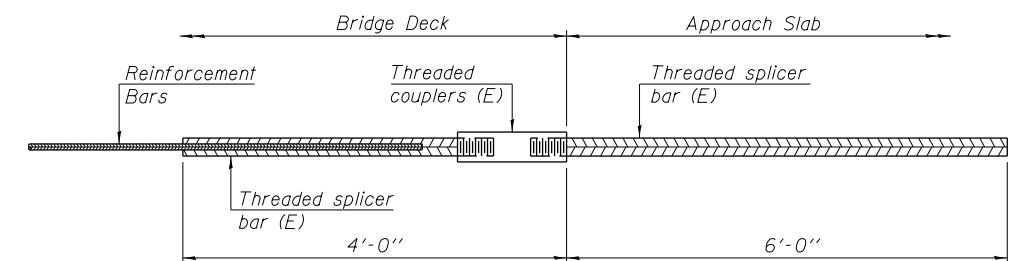
INSTALLATION AND SETTING METHODS

"A" : Set bar splicer assembly by means of a template bolt.
 "B" : Set bar splicer assembly by nailing to wood forms or cementing to steel forms.
 (E) : Indicates epoxy coating.



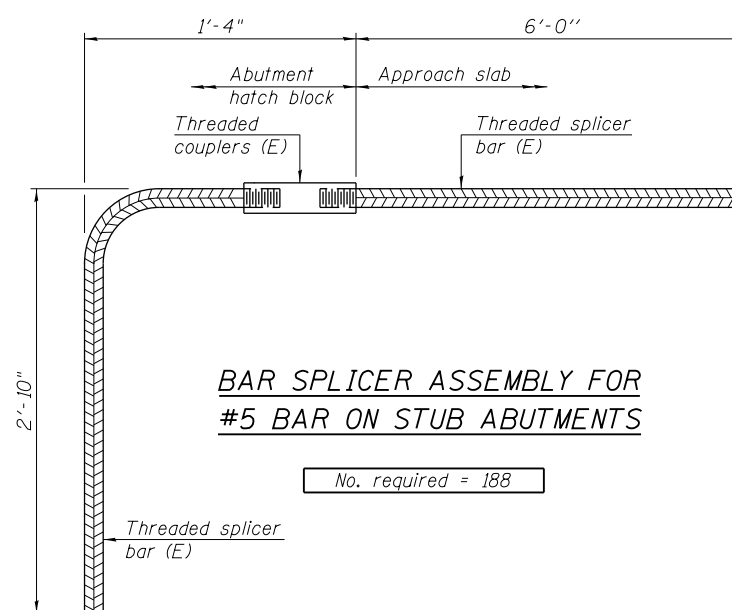
STANDARD MECHANICAL SPLICER

Location	Bar size	No. assemblies required



BAR SPLICER ASSEMBLY FOR #5 BAR ON INTEGRAL OR SEMI-INTEGRAL ABUTMENTS

No. required =



BAR SPLICER ASSEMBLY FOR #5 BAR ON STUB ABUTMENTS

No. required = 188

NOTES

Splicer bars shall be deformed with threaded ends and have a minimum 60 ksi yield strength.
 All reinforcement shall be lapped and tied to the splicer bars.
 Bar splicer assemblies shall be epoxy coated according to the requirements for reinforcement bars. See Section 508 of the Standard Specifications.
 See approved list of bar splicer assemblies and mechanical splicers for alternatives.

4:34:06 PM 0161716-60W26-S073-Bar Splice.dgn

BSD-1

1-27-12



USER NAME = rlschultz	DESIGNED - MTS	REVISED
PLOT SCALE = 0:1' = 1/8" / 1 in.	CHECKED - KAH	REVISED
PLOT DATE = 9/15/2013	DRAWN - RLS	REVISED
	CHECKED - WJC/JRM	REVISED

**STATE OF ILLINOIS
DEPARTMENT OF TRANSPORTATION**

**BAR SPLICER ASSEMBLY AND MECHANICAL SPLICER DETAILS
STRUCTURE NO. 016-1716**

SHEET NO. S2-73 OF S2-81 SHEETS

F.A.U. RTE.	SECTION	COUNTY	TOTAL SHEETS	SHEET NO.
3730	2013-008R	COOK	559	433
CONTRACT NO.			60W26	
ILLINOIS FED. AID PROJECT				