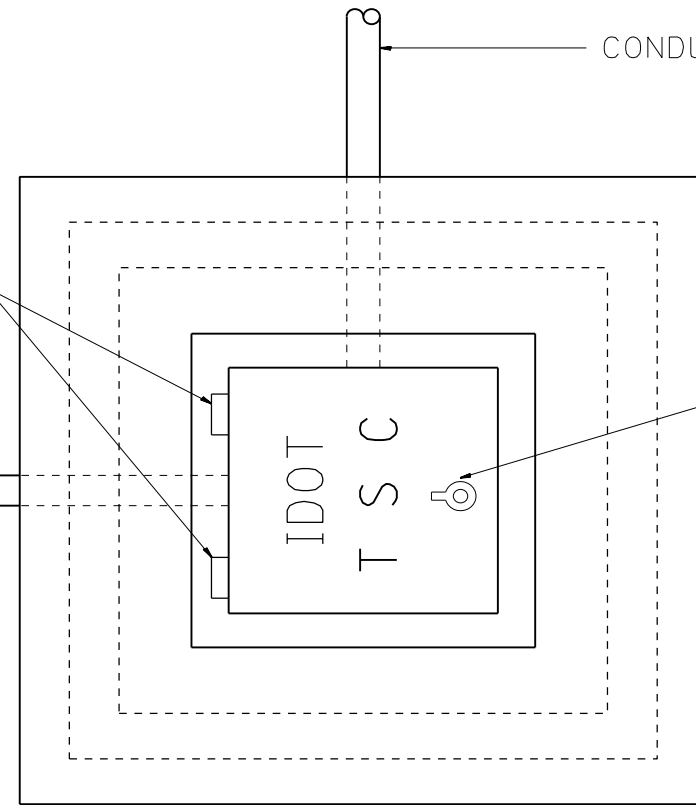


TYPE "T" HINGES REQUIRED ONLY ON
ON HEAVY DUTY SPECIAL.

CONDUIT TYP.

CONDUIT TYP.

TYPE "G" HANDLE FOR BOTH HDHH AND HDHH SPECIAL



PLAN

HEAVY DUTY HANDHOLE MINIMUM DIMENSIONS (UNHINGED)

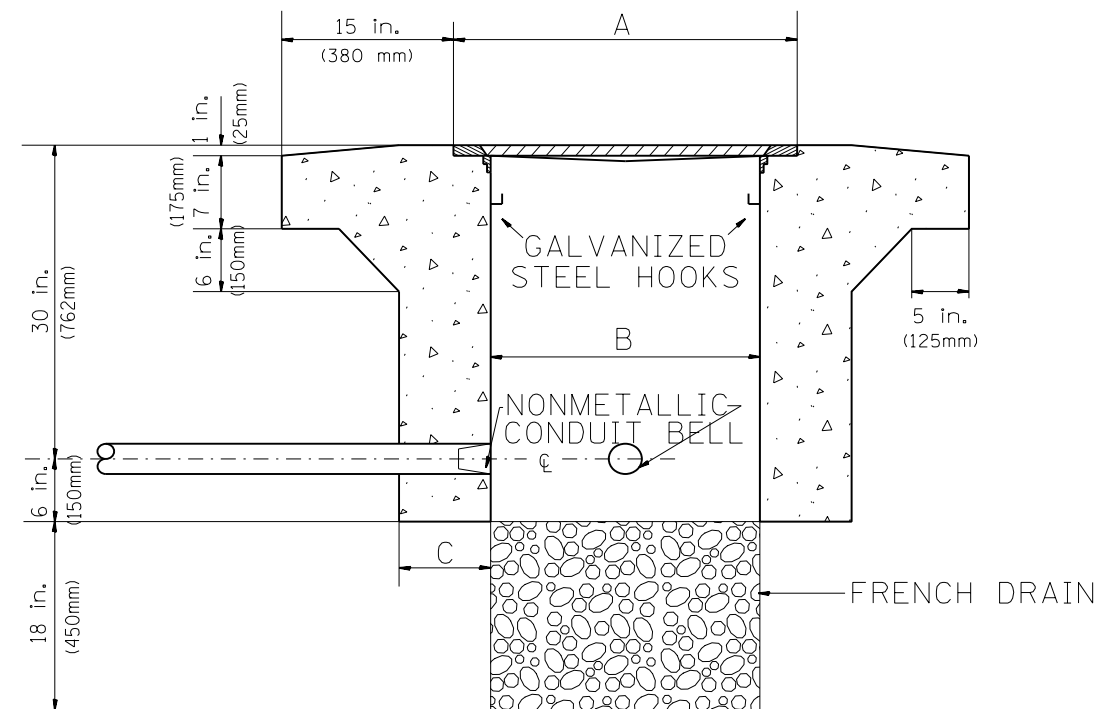
A	28" (711 mm)
B	22" (559 mm)
C	8" (200 mm)

(FRAME AND COVER 260 LBS. (118 Kg.) MIN.)

HEAVY DUTY HANDHOLE SPECIAL MINIMUM DIMENSIONS

A	31.5" (800 mm)
B	30.0" (762 mm)
C	10.0" (250 mm)

(FRAME AND COVER 405 LBS. (184 Kg. (405))



ELEVATION

PC CONCRETE - HEAVY DUTY HAND HOLE

FILE PATH = p:\388039-p\m\l\ecomonline.local\p\AECD\00\Documents\01_Americas\Transportation\60269938_Circle\Phase_1\000_CAD\005_Roadway_Sheets\60W26_Contract\0160W26-sht-1TS-07

FILE NAME =	USER NAME = ougeungh	DESIGNED - R.L.	REVISED - 04/97
p:\388039-p\m\l\ecomonline.local\p\AECD\00\Documents\01_Americas\Transportation\60269938_Circle\Phase_1\000_CAD\005_Roadway_Sheets\60W26_Contract\0160W26-sht-1TS-07		CHECKED - R.L.	REVISED -
	PLOT SCALE = 50.0000' / in.	DATE - 09/11/96	REVISED -
	PLOT DATE = 8/18/2013		

STATE OF ILLINOIS
DEPARTMENT OF TRANSPORTATION
TRAFFIC SYSTEMS CENTER

PC CONCRETE - HEAVY DUTY HAND HOLE			
SCALE: NO SCALE	SHEET 2 OF 3 SHEETS	STA. TO STA.	

F.A.I. RTE.	SECTION	COUNTY	TOTAL SHEETS	SHEET NO.
90/94/290	2013-008R	COOK	559	489
CONTRACT NO. 60W26				
ILLINOIS FED. AID PROJECT				

TRAFFIC SYSTEMS CENTER (TY-1TSC-400#15)