

INDEX OF SHEETS

01 COVER SHEET
 02 INDEX OF SHEETS
 03-04 LOCATION MAP
 05-09 SUMMARY OF QUANTITIES
 10-15 DISTRICT 1 STANDARD TRAFFIC SIGNAL DESIGN DETAILS

| PAGE | TS# | INTERSECTION NAME |
|-------|-------|---|
| 16 | 5790 | STATE RD. AT STEGER /34TH RD. |
| 17 | 1009 | 123RD ST./MCCARTHY RD. AT BELL RD. |
| 18 | 22195 | 127TH ST. AT STATE ST. |
| 19 | 2226 | IL 171 /ARCHER AVE. AT 127TH ST. |
| 20 | 3567 | IL 171 /ARCHER AVE. AT ACCESS DR./TARGET ENT. |
| 21 | 3585 | IL 171 /ARCHER AVE. AT STATE ST. |
| 22-23 | 3365 | IL 83-IL 171 N CAL SAG NORTH AT 107TH ST. |
| 24 | 3370 | IL 83-IL 171 S CAL SAG SOUTH AT 111TH ST. |
| 25 | 5785 | STATE ST. AT ILLINOIS AVE. |
| 26 | 21475 | IL 171 /ARCHER AVE. AT BELL RD. |
| 27 | 4900 | CRAWFORD AVE. AT 167TH ST. |
| 28-29 | 5050 | DIXIE HWY AT 167TH ST./170TH |
| 30 | 10635 | US 6 /159TH ST. AT CENTRAL PARK AVE. |
| 31 | 245 | US 6 /159TH ST AT KEDZIE AVE. |
| 32 | 10640 | US 6 /159TH ST. AT RICHMOND AVE. |
| 33 | 215 | US 6 /159TH ST. AT CRAWFORD AVE./PULASKI RD. |
| 34 | 4845 | CRAWFORD AVE./PULASKI RD. AT GOVERNORS HWY |
| 35 | 1376 | GOVERNORS HWY AT 212TH PL |
| 36 | 10630 | 216TH ST. AT GOVERNORS HWY |
| 37 | 1357 | IL 50 CICERO AVE. AT 207TH ST./BIRCHWOOD |
| 38 | 2630 | IL 50 /CICERO AVE. AT MATTESON TOWN CENTER MALL |
| 39 | 12404 | IL 50 /CICERO AVE. AT NORTH GATEWAY DR. |
| 40 | 12400 | IL 50 /CICERO AVE. AT SOUTHWICK DR. |
| 41 | 2635 | IL 50 /CICERO AVE. AT VOLLMER RD. |
| 42 | 12403 | IL 50 /CICERO AVE. AT WAL-MART ENTRANCE |
| 43 | 1355 | US 30 /LINCOLN HWY AT IL 50 /CICERO AVE. |
| 44 | 1450 | US 30 /LINCOLN HWY AT KOSTNER AVE. |
| 45 | 1430 | US 30 /LINCOLN HWY AT LINDENWOOD DR./LINCOLN MALL |
| 46 | 11190 | US 30 /LINCOLN HWY AT MATTESON SHOPPING CENTER |
| 47 | 11345 | US 30 /LINCOLN HWY AT MID CONTINENT DR. |
| 48 | 1385 | US 30 /LINCOLN HWY AT MAIN ST. |
| 49 | 9727 | 143RD ST. AT JUSTAMERE RD. |
| 50 | 2640 | IL 50-IL 83 CICERO AVE. AT IL 83 147TH ST./SIBLEYBLVD |
| 51 | 3400 | IL 83 SIBLEY BLVD-147TH ST. AT CRAWFORD AVE. |
| 52 | 3445 | IL 83 SIBLEY BLVD-147TH ST. AT KEELER AVE. |
| 53 | 3455 | IL 83 SIBLEY BLVD-147TH ST. AT KILBOURN AVE. |
| 54 | 4000 | 127TH ST. AT RIDGELAND AVE. |
| 55 | 4035 | 135TH ST. AT RIDGELAND AVE. |
| 56 | 2220 | IL 43 HARLEM AVE. AT 123RD ST. |
| 57 | 2230 | IL 43 HARLEM AVE. AT 131ST ST. |
| 58 | 2105 | IL 43 HARLEM AVE. AT IL 83 /119TH ST./COLLEGE DR. |
| 59 | 2225 | IL 43 /HARLEM AVE. AT 127TH ST. |
| 60 | 2235 | IL 43 /HARLEM AVE. AT 135TH ST. |
| 61 | 1903 | IL 7 /SOUTHWEST HWY AT 117TH ST. |
| 62 | 1904 | IL 7 /SOUTHWEST HWY AT METRA TRAIN STATION /114TH PLACE |
| 63 | 3532 | IL 83 /CAL SAG RD. AT 76TH AVE. |
| 64 | 3505 | IL 83 /CAL SAG RD. AT RIDGELAND AVE. |
| 65 | 1633 | 107TH ST. AT 104TH AVE. |
| 66 | 1631 | 111TH ST. AT 84TH AVE. |
| 67 | 3940 | 111TH ST. AT 86TH AVENUE |
| 68 | 1632 | 111TH ST. AT KEAN AVE. |
| 69 | 3942 | 111TH ST. AT POSSUM DRIVE /COLLEGE PKWY. |
| 70 | 3955 | 111TH ST. AT ROBERTS RD. |
| 71 | 1913 | 131ST STREET AT 86TH AVENUE |
| 72 | 1011 | 123RD ST./MCCARTHY RD. AT WOLF RD. |
| 73 | 3975 | 127TH STREET AT 76TH AVENUE |
| 74 | 1899 | 80TH AVE. AT 123RD ST./MCCARTHY RD. |
| 75-76 | 1895 | IL 7 /SOUTHWEST HWY AT IL 83 /CAL SAG 80TH AVE. |
| 77 | 3530 | IL 83 /CAL SAG RD. AT 119TH ST. |
| 78 | 1690 | US 45 /LAGRANGE RD. AT 123RD ST./MCCARTHY RD. |
| 79 | 1007 | 123RD ST./MCCARTHY RD. AT WILL COOK RD. |
| 80 | 5190 | GOVERNORS HWY AT SAUK TRAIL |
| 81 | 2615 | IL 50 CICERO AVE. AT SAUK TRAIL |
| 82 | 1865 | IL 1 /CHICAGO AT STEGER RD. |
| 83 | | TRAFFIC CONTROL AND PROTECTION FOR SIDE ROADS, INTERSECTIONS, AND DRIVEWAYS |
| 84 | | TRAFFIC CONTROL AND PROTECTION AT TURN BAYS, (TO REMAIN OPEN TO TRAFFIC) |

GENERAL NOTES

BEFORE STARTING ANY EXCAVATION, THE CONTRACTOR SHALL CALL "J.U.L.I.E." AT (800) 892-0123 OR 811 FOR FIELD LOCATIONS OF BURIED ELECTRIC, TELEPHONE AND GAS UTILITIES. 48 HOUR NOTIFICATION IS REQUIRED.

THE CONTRACTOR SHALL CONTACT THE TRAFFIC CONTROL SUPERVISOR AT (847) 705-4470 72 HOURS IN ADVANCE OF BEGINNING WORK.

IT SHALL BE THE CONTRACTOR'S RESPONSIBILITY TO VERIFY ALL DIMENSIONS AND CONDITIONS EXISTING IN THE FIELD PRIOR TO ORDERING MATERIALS AND BEGINNING CONSTRUCTION. THIS SHALL INCLUDE LOCATING THE MAST ARM FOUNDATIONS AND VERIFYING THE MAST ARMS LENGTHS.

THE EXACT LOCATION OF ALL UTILITIES SHALL BE FIELD VERIFIED BY THE CONTRACTOR BEFORE ORDERING ANY MATERIALS AND STARTING ANY WORK. FOR LOCATIONS OF UTILITIES, LOCALLY OWNED EQUIPMENT, LEASED ENFORCEMENT CAMERA SYSTEM FACILITIES AND IDOT UNDERGROUND FACILITIES, CONTACT THE LOCAL COUNTIES, MUNICIPALITIES AND IDOT FOR LOCATES. THE CONTRACTOR SHALL CALL "JULIE" AT (800) 892-0123 OR 811, IN THE CITY OF CHICAGO, CONTACT DIGGER AT (312) 744-7000 FOR FIELD LOCATIONS OF BURIED UTILITIES (48 HOURS NOTIFICATION REQUIRED).

IF THIS CONTRACT REQUIRES THE SERVICES OF AN ELECTRICAL CONTRACTOR, THE CONTRACTOR SHALL BE RESPONSIBLE AT HIS/HER OWN EXPENSE FOR LOCATING EXISTING IDOT ELECTRICAL FACILITIES PRIOR TO PERFORMING ANY WORK. IF THIS CONTRACT DOES NOT REQUIRE THE SERVICES OF AN ELECTRICAL CONTRACTOR, THE CONTRACTOR MAY REQUEST ONE FREE LOCATE FOR EXISTING IDOT ELECTRICAL FACILITIES FROM THE DISTRICT ONE ELECTRICAL MAINTENANCE CONTRACTOR PRIOR TO THE START OF ANY WORK. ADDITIONAL REQUESTS MAY BE AT THE EXPENSE OF THE CONTRACTOR. THE LOCATION OF UNDERGROUND TRAFFIC FACILITIES DOES NOT RELIEVE THE CONTRACTOR OF THEIR RESPONSIBILITY TO REPAIR ANY FACILITIES DAMAGED DURING CONSTRUCTION AT THEIR EXPENSE.

THE CONTRACTOR SHALL CHECK THE PROPOSED TRAFFIC SIGNAL EQUIPMENT LOCATIONS FOR OVERHEAD UTILITY CONFLICTS. THE CONTRACTOR SHALL COORDINATE ANY CONFLICTS WITH THE UTILITY COMPANIES AND RESIDENT ENGINEER BEFORE ORDERING MATERIALS.

THE CONTRACTOR SHALL COORDINATE CONSTRUCTION ACTIVITIES WITH UTILITY COMPANIES, LOCAL GOVERNMENT AGENCIES AND IDOT.

RESTORATION OF THE TRAFFIC SIGNAL WORK AREA SHALL BE INCLUDED IN THE RELATED PAY ITEM SUCH AS FOUNDATION, CONDUIT, HANDHOLE, ETC., AND NO EXTRA COMPENSATION SHALL BE ALLOWED. ALL ROADWAY SURFACES SUCH AS SHOULDERS, MEDIAN, SIDEWALKS, PAVEMENT, ETC. SHALL BE REPLACED IN KIND. ALL DAMAGE TO MOWED LAWNS SHALL BE REPLACED WITH AN APPROVED SOD, AND ALL DAMAGED TO UNMOWED FIELDS SHALL BE SEEDING IN ACCORDANCE WITH STANDARD SPECIFICATIONS 252 AND 250 RESPECTIVELY.

ANY REFERENCE TO THE STANDARDS THROUGHOUT THE PLANS OR SPECIAL PROVISIONS SHALL BE INTERPRETED AS THE TEST STANDARD OF THE ILLINOIS DEPARTMENT OF TRANSPORTATION.

THE CONTRACTOR SHALL FAMILIARIZE HIMSELF OR HERSELF WITH THE PLANS AND SHALL NOTIFY THE ENGINEER AT ONCE OF ANY DISCREPANCIES.

THE CONTRACTOR IS REQUIRED TO ATTEND AN ILLINOIS DEPARTMENT OF TRANSPORTATION (IDOT) PRECONSTRUCTION MEETING AND SHALL INFORM THE IDOT TRAFFIC ENGINEER BEFORE WORK COMMENCES.

THE CONTRACTOR SHALL KEEP PUBLIC STREET PAVEMENTS CLEAN OF DIRT AND DEBRIS.

THE CONTRACTOR SHALL BE RESPONSIBLE IN PROVIDING SAFE HEALTHFUL CONDITIONS THROUGHOUT THE CONSTRUCTION OF THE PROPOSED IMPROVEMENTS.

THE CONTRACTOR SHALL BE RESPONSIBLE FOR THE PROTECTION OF ALL UNDERGROUND AND SURFACE UTILITIES EVEN THOUGH THEY MAY NOT BE SHOWN ON THE PLANS. ANY UTILITY THAT IS DAMAGED DURING CONSTRUCTION SHALL BE RESTORED TO A CONDITION EQUAL TO THAT EXISTING BEFORE THE DAMAGE INCURRED. THIS WORK SHALL BE AT THE CONTRACTOR'S EXPENSE.

NEW CONTROLLER CABINETS SHALL BE PLACED SO THAT, a) THE DOORS OPEN AWAY FROM THE CURB OR TRAVELED WAY, b) AND THE TRAFFIC MOVEMENTS AT THE INTERSECTION ARE VISIBLE FROM THE CONTROLLER.

ANY CONTROLLER CABINET WHETHER NEW OR EXISTING TO RECEIVE UPS, WILL HAVE A "L" SHAPED 3 FOOT CONCRETE MAINTENANCE PAD INSTALLED. THE COST OF INSTALLATION OF CONCRETE PAD IS INCIDENTAL TO NEW CONTROLLER AND OR UPS INSTALLATIONS.

PRIOR TO REMOVING ANY TRAFFIC SIGNAL POST SPECIFIED TO BE REPLACED IN THE SAME LOCATION, THE CONTRACTOR SHALL VERIFY THAT THE PATTERN, SPACING, AND CONDITION OF THE EXISTING BOLTS ARE SUITABLE FOR RE-USE WITH A NEW POST. IF THE BOLTS ARE NOT REUSABLE, THEN THE EXISTING POST SHALL REMAIN IN PLACE OR AS DIRECTED BY THE ENGINEER.

CONTRACTOR SHALL REPLACE BROKEN MOUNTING BRACKETS AT ALL RETROFIT SIGNAL HEAD INTERSECTIONS OR AS DIRECTED BY THE ENGINEER. THE COST OF THIS WORK SHALL BE INCLUDED IN THE CORRESPONDING SIGNAL HEAD, LED, RETROFIT PAY ITEM OF THE TYPE AND NUMBER OF SIGNAL HEADS, FACES AND SECTIONS AS SPECIFIED IN THE PLANS.

THE CONTRACTOR SHALL RELOCATE EXISTING SIGN PANELS FROM PAINTED POSTS THAT ARE INDICATED FOR REPLACEMENT TO A NEW POSTS AS SHOWN ON THE PLANS OR AS DIRECTED BY THE ENGINEER. THE COST OF REMOVAL, RELOCATION AND ANY NEW MOUNTING HARDWARE NECESSARY TO COMPLETE THIS WORK SHALL BE INCLUDED IN THE TRAFFIC SIGNAL POST, GALVANIZED STEEL PAY ITEM OF THE LENGTH AS SPECIFIED ON THE PLANS.

DUE TO THE PRESENCE OF A RED LIGHT RUNNING (RLR) CAMERA FOR THE BELOW LISTED LOCATIONS, CONTRACTOR SHALL NOTIFY THE VILLAGE AND RLR CAMERA COMPANY PRIOR TO THE START OF CONSTRUCTION. THE VILLAGE OR THE RLR CAMERA COMPANY SHALL MAKE THE CAMERA INOPERATIVE FOR THE TIME OF CONSTRUCTION. ANY RLR CAMERA EQUIPMENT THAT IS IN CONFLICT WITH THE PROPOSED CONSTRUCTION SHALL BE REMOVED BY ITS RESPECTIVE OWNERS PRIOR TO THE START OF CONSTRUCTION.

RLR CAMERA LOCATION:

| | | |
|--------------------|----------------------------|-------------------------------------|
| TS# | 245 | US 6 /159TH STREET AT KEDZIE AVENUE |
| TS# | 4900 | CRAWFORD AVENUE AT 167TH STREET |
| VILLAGE OF MARKHAM | 16313 SOUTH KEDZIE PARKWAY | MARKHAM, IL 60428 |
| REDSPEED ILLINOIS | 400 EISENHOWER LANE NORTH | LOMBARD, IL 60148 |
| | 708-331-4905 | 630-317-5700 |

RLR CAMERA LOCATION:

| | | |
|--------------------------|-------------------------|----------------------------------|
| TS# | 2105 | HARLEM AVENUE AT 119TH STREET |
| TS# | 4035 | 135TH STREET AT RIDGELAND AVENUE |
| VILLAGE OF PALOS HEIGHTS | 7607 WEST COLLEGE DRIVE | PALOS HEIGHTS, IL 60463 |
| REDFLEX TRAFFIC SYSTEMS | 2358 W. MADISON STREET | CHICAGO, IL 60612 |
| | 708-361-1804 | 312-580-1594 |

RLR CAMERA LOCATION:

| | | |
|------------------------|---------------------------|------------------------------|
| TS# | 3955 | 111TH STREET AT ROBERTS ROAD |
| VILLAGE OF PALOS HILLS | 10335 SOUTH ROBERTS ROAD | PALOS HILLS, IL 60465 |
| REDSPEED ILLINOIS | 400 EISENHOWER LANE NORTH | LOMBARD, IL 60148 |
| | 708-598-3400 | 630-317-5700 |



| | | | | | | | | | |
|--|---------------------------|-----------------|-------------------|---|---------------------------------------|----------|------------------|--------------------|-----------|
| FILE NAME: S:\NPN\Design\ALL PLANS TO SPRINGFIELD\2013 | USER NAME: rrosedovazquez | DESIGNED: PKG | REVISED: 10-10-13 | STATE OF ILLINOIS DEPARTMENT OF TRANSPORTATION | INDEX OF SHEETS AND LIST OF STANDARDS | | | | |
| EDRAWN: 02.Standards | CHECKED: PKG | DATE: 8/15/2013 | REVISED: | | F.A.B. RTE. | SECTION | COUNTY | TOTAL SHEETS | SHEET NO. |
| SCALE: 1/2" = 1' | DATE: 10/24/2013 | REVISED: | SCALE: N.T.S. | | SHEET NO. | OF | SHEETS | STA. | TO STA. |
| | | | | | FED. ROAD DIST. NO. | ILLINOIS | FED. AID PROJECT | CONTRACT NO. 60W85 | |

REV 10-11

| SUMMARY OF QUANTITIES HEADING LEGEND | | | | STATE | CRETE | LEMONT | LEMONT TOWNSHIP | MARKHAM | MATTESON | MIDLOTHIAN | PALOS TOWNSHIP | PALOS HEIGHTS | PALOS HILLS | PALOS PARK | WAL-MART STORE, INC. | LINCOLN MALL | MATTESON PLAZA C/O SIMON PROPERTY GROUP, INC | MATTESON TOWN CENTER C/O FORSITE REALTY PARTNERS, LLC | OLYMPIA FIELD | |
|--------------------------------------|--------|-------|--|-------|-------|--------|-----------------|---------|----------|------------|----------------|---------------|-------------|------------|----------------------|--------------|--|---|---------------|------|
| FUNDING PARTICIPATION | | | | | | | | | | | | | | | | | | | | |
| LOCATION | COLUMN | TS * | INTERSECTION | | | | | | | | | | | | | | | | | |
| 1 | 2 | 5790 | STATE ROAD AT STEGER STREET / 34TH ROAD | 97.5% | 2.5% | | | | | | | | | | | | | | | |
| 2 | 1 | 1009 | 123RD STREET / MCCARTHY ROAD AT BELL ROAD | 100% | | | | | | | | | | | | | | | | |
| 3 | 20 | 22195 | 127TH STREET AT STATE STREET | 92.5% | | 7.5% | | | | | | | | | | | | | | |
| 4 | 17 | 2226 | IL 171 / ARCHER AVENUE AT 127TH STREET | 95% | | 5% | | | | | | | | | | | | | | |
| 5 | 9 | 3567 | IL 171 / ARCHER AVENUE AT ACCESS DRIVE / TARGET ENTRANCE | 96.7% | | 3.3% | | | | | | | | | | | | | | |
| 6 | 1 | 3565 | IL 171 / ARCHER AVENUE AT STATE STREET | 100% | | | | | | | | | | | | | | | | |
| 7 | 4 | 3365 | IL 83-IL 171 N CAL SAG NORTH AT 107TH STREET | 97.5% | | 2.5% | | | | | | | | | | | | | | |
| 8 | 1 | 3370 | IL 83-IL 171 S CAL SAG SOUTH AT 111TH STREET | 100% | | | | | | | | | | | | | | | | |
| 9 | 1 | 5785 | STATE STREET AT ILLINOIS AVENUE | 100% | | | | | | | | | | | | | | | | |
| 10 | 3 | 21475 | IL 171 / ARCHER AVENUE AT BELL ROAD | 97.5% | | 2.5% | | | | | | | | | | | | | | |
| 11 | 1 | 4900 | CRAWFORD AVENUE AT 167TH STREET | 100% | | | | | | | | | | | | | | | | |
| 12 | 1 | 5050 | DIXIE HIGHWAY AT 167TH STREET / 170TH | 100% | | | | | | | | | | | | | | | | |
| 13 | 12 | 10635 | US 6 / 159TH STREET AT CENTRAL PARK AVENUE | 95% | | | | 5% | | | | | | | | | | | | |
| 14 | 1 | 245 | US 6 / 159TH STREET AT KEDZIE AVENUE | 100% | | | | | | | | | | | | | | | | |
| 15 | 12 | 10640 | US 6 / 159TH STREET AT RICHMOND AVENUE | 95% | | | | 5% | | | | | | | | | | | | |
| 16 | 1 | 215 | US 6 / 159TH STREET AT CRAWFORD AVENUE / PULASKI ROAD | 100% | | | | | | | | | | | | | | | | |
| 17 | 1 | 4945 | CRAWFORD AVENUE / PULASKI ROAD AT GOVERNORS HIGHWAY | 100% | | | | | | | | | | | | | | | | |
| 18 | 24 | 1376 | GOVERNORS HIGHWAY AT 212TH PLACE | 95% | | | | | | | | | | | | | 5% | | | |
| 19 | 13 | 10630 | GOVERNORS HIGHWAY AT 216TH STREET | 95% | | | | | 5% | | | | | | | | | | | |
| 20 | 13 | 1357 | IL 50 / CICERO AVENUE AT 207TH STREET / BIRCHWOOD | 95% | | | | | 5% | | | | | | | | | | | |
| 21 | 13 | 2630 | IL 50 / CICERO AVENUE AT MATTESON TOWN CENTER MALL | 95% | | | | | 5% | | | | | | | | | | | |
| 22 | 10 | 12404 | IL 50 / CICERO AVENUE AT NORTH GATEWAY DRIVE | 96.7% | | | | | 3.3% | | | | | | | | | | | |
| 23 | 13 | 12400 | IL 50 / CICERO AVENUE AT SOUTHWICK DRIVE | 95% | | | | | 5% | | | | | | | | | | | |
| 24 | 1 | 2635 | IL 50 / CICERO AVENUE AT VOLLMER ROAD | 100% | | | | | | | | | | | | | | | | |
| 25 | 21 | 12403 | IL 50 / CICERO AVENUE AT WAL-MART ENTRANCE / LINCOLN MALL DRIVE | 95% | | | | | | | | | | | 5% | | | | | |
| 26 | 1 | 1355 | US 30 / LINCOLN HIGHWAY AT IL 50 / CICERO AVENUE | 100% | | | | | | | | | | | | | | | | |
| 27 | 13 | 1450 | US 30 / LINCOLN HIGHWAY AT KOSTNER AVENUE | 95% | | | | | 5% | | | | | | | | | | | |
| 28 | 22 | 1430 | US 30 / LINCOLN HIGHWAY AT LINDENWOOD DRIVE / LINCOLN MALL | 95% | | | | | | | | | | | | 5% | | | | |
| 29 | 24 | 11190 | US 30 / LINCOLN HIGHWAY AT MATTESON SHOPPING CENTER | 95% | | | | | | | | | | | | | 5% | | | |
| 30 | 23 | 11345 | US 30 / LINCOLN HIGHWAY AT MID CONTINENT DRIVE / HOLIDAY PLAZA DRIVE | 95% | | | | | | | | | | | | | | 5% | | |
| 31 | 19 | 1385 | US 30 / LINCOLN HIGHWAY AT MAIN STREET | 95% | | | | | 2.5% | | | | | | | | | | | 2.5% |
| 32 | 1 | 9727 | 143RD STREET AT JUSTAMERE ROAD | 100% | | | | | | | | | | | | | | | | |
| 33 | 1 | 2640 | IL 50-IL 83 CICERO AVENUE AT IL 83 147TH STREET / SIBLEYBLVD | 100% | | | | | | | | | | | | | | | | |
| 34 | 1 | 3400 | IL 83 SIBLEY BLVD-147TH STREET AT CRAWFORD AVENUE / PULASKI ROAD | 100% | | | | | | | | | | | | | | | | |
| 35 | 14 | 3445 | IL 83 SIBLEY BLVD-147TH STREET AT KEELER AVENUE | 95% | | | | | | 5% | | | | | | | | | | |
| 36 | 14 | 3455 | IL 83 SIBLEY BLVD-147TH STREET AT KILBOURN AVENUE | 95% | | | | | | 5% | | | | | | | | | | |
| 37 | 1 | 4000 | 127TH STREET AT RIDGELAND AVENUE | 100% | | | | | | | | | | | | | | | | |
| 38 | 1 | 4035 | 135TH STREET AT RIDGELAND AVENUE | 100% | | | | | | | | | | | | | | | | |
| 39 | 16 | 2220 | IL 43 / HARLEM AVENUE AT 123RD STREET | 95% | | | | | | | | 5% | | | | | | | | |
| 40 | 7 | 2230 | IL 43 / HARLEM AVENUE AT 131ST STREET | 97.5% | | | | | | | | 2.5% | | | | | | | | |
| 41 | 1 | 2105 | IL 43 / HARLEM AVENUE AT IL 83 / 119TH STREET / COLLEGE DRIVE | 100% | | | | | | | | | | | | | | | | |
| 42 | 1 | 2225 | IL 43 / HARLEM AVENUE AT 127TH STREET | 100% | | | | | | | | | | | | | | | | |
| 43 | 1 | 2235 | IL 43 / HARLEM AVENUE AT 135TH STREET | 100% | | | | | | | | | | | | | | | | |
| 44 | 16 | 1903 | IL 7 / SOUTHWEST HIGHWAY AT 117TH STREET | 95% | | | | | | | | 5% | | | | | | | | |
| 45 | 16 | 1904 | IL 7 / SOUTHWEST HIGHWAY AT METRA TRAIN STATION / 114TH PLACE | 95% | | | | | | | | 5% | | | | | | | | |
| 46 | 16 | 3532 | IL 83 / CAL SAG ROAD AT 76TH AVENUE | 95% | | | | | | | | 5% | | | | | | | | |
| 47 | 1 | 3505 | IL 83 / CAL SAG ROAD AT RIDGELAND AVENUE | 100% | | | | | | | | | | | | | | | | |
| 48 | 1 | 1633 | 107TH STREET AT 104TH AVENUE | 100% | | | | | | | | | | | | | | | | |
| 49 | 15 | 1631 | 111TH STREET AT 84TH AVENUE | 95% | | | | | | | | 5% | | | | | | | | |
| 50 | 11 | 3940 | 111TH STREET AT 86TH AVENUE | 96.7% | | | | | | | | 3.3% | | | | | | | | |
| 51 | 6 | 1632 | 111TH STREET AT KEAN AVENUE | 97.5% | | | | | | | | 2.5% | | | | | | | | |
| 52 | 15 | 3942 | 111TH STREET AT POSSUM DRIVE / COLLEGE PKWY | 95% | | | | | | | | 5% | | | | | | | | |
| 53 | 6 | 3955 | 111TH STREET AT ROBERTS ROAD | 97.5% | | | | | | | | 2.5% | | | | | | | | |
| 54 | 18 | 1913 | 131ST STREET AT 86TH AVENUE | 97.5% | | | | | | 2.5% | | | | | | | | | | |
| 55 | 1 | 1011 | 123RD STREET / MCCARTHY ROAD AT WOLF ROAD | 100% | | | | | | | | | | | | | | | | |
| 56 | 16 | 3975 | 127TH STREET AT 76TH AVENUE | 95% | | | | | | | | 5% | | | | | | | | |
| 57 | 1 | 1899 | 80TH AVENUE AT 123RD STREET / MCCARTHY ROAD | 100% | | | | | | | | | | | | | | | | |
| 58 | 1 | 1895 | IL 7 / SOUTHWEST HIGHWAY AT IL 83 / CAL SAG 80TH AVENUE | 100% | | | | | | | | | | | | | | | | |

| | | | | | | | | | | | | | | | | |
|--|-----------------------------|-----------------|---------------------|---|--|--|--|---|--|--|--|---|---------------------|--------------|--------------|------------|
| FILE NAME: S:\NPS\Design\All PLANS to SPRINGFIELD\2013 Lettings\11-20-2013\60W85\RD South Cook | USER NAME: rrosado@vaqueziz | DESIGNED: PKG | REVISED: 10/10/2013 | STATE OF ILLINOIS DEPARTMENT OF TRANSPORTATION | | | | SUMMARY OF QUANTITIES (SHEET 1 OF 5) | | | | F.A.B. RTE. | SECTION | COUNTY | TOTAL SHEETS | SHEET NO. |
| DRAWN: 10/10/2013 | CHECKED: PKG | DATE: 8/15/2013 | REVISED: | | | | | | | | | SCALE: N.T.S. | SHEET NO. OF SHEETS | STA. TO STA. | VAR. | 2013-040TS |
| | | | | | | | | | | | | CONTRACT NO. 60W85 | | | | |
| | | | | | | | | | | | | FED. ROAD DIST. NO. ILLINOIS FED. AID PROJECT | | | | |

REV. 10-10-11

| SUMMARY OF QUANTITIES HEADING LEGEND | | | | STATE | CRETE | LEMONT | LEMONT TOWNSHIP | MARKHAM | MATTESON | MIDLOTHIAN | PALOS TOWNSHIP | PALOS HEIGHTS | PALOS HILLS | PALOS PARK | WAL-MART STORE, INC. | LINCOLN MALL | MATTESON PLAZA C/O SIMON PROPERTY GROUP, INC | MATTESON TOWN CENTER C/O FORSITE REALTY PARTNERS, LLC | OLYMPIA FIELD |
|--------------------------------------|--------|------|---|-------|-------|--------|-----------------|---------|----------|------------|----------------|---------------|-------------|------------|----------------------|--------------|--|---|---------------|
| FUNDING PARTICIPATION | | | | | | | | | | | | | | | | | | | |
| LOCATION | COLUMN | TS * | INTERSECTION | | | | | | | | | | | | | | | | |
| 59 | 8 | 3530 | IL 83 / CAL SAG ROAD AT 119TH STREET | 100% | | | | | | | | | | 2.5% | | | | | |
| 60 | 1 | 1690 | US 45 / LAGRANGE ROAD AT 123RD STREET / MCCARTHY ROAD | 100% | | | | | | | | | | | | | | | |
| 61 | 8 | 1007 | 123RD STREET / MCCARTHY ROAD AT WILL COOK ROAD | 97.5% | | | | | | | | | | 2.5% | | | | | |
| 62 | 1 | 5190 | GOVERNORS HIGHWAY AT SAUK TRAIL | 100% | | | | | | | | | | | | | | | |
| 63 | 1 | 2615 | IL 50 CICERO AVE AT SAUK TRAIL | 100% | | | | | | | | | | | | | | | |
| 64 | 1 | 1865 | IL 1 / CHICAGO AT STEGER ROAD | 100% | | | | | | | | | | | | | | | |

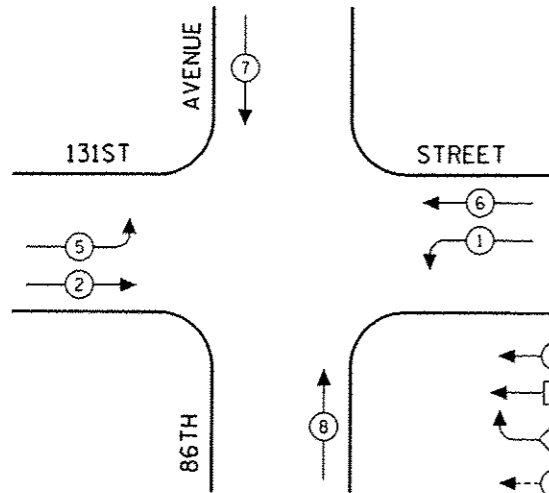
| | | | | | | | | | | | | | |
|---|---|-----------------------------------|-----------------------|---|---|-----------|----|--------|------------------|---------|--------|--------------|-----------|
| FILE NAME : S:\WP\Design\All PLANS to SPRINGFIELD\2013\08\08\05\10\1 South Cook | USER NAME : rosadovezquez | DESIGNED - PKG | REVISED - HW 10-10-12 | STATE OF ILLINOIS DEPARTMENT OF TRANSPORTATION | SUMMARY OF QUANTITIES (SHEET 2 OF 5) | | | | F.A.B. RTE. | SECTION | COUNTY | TOTAL SHEETS | SHEET NO. |
| | 3 Lettings\11-08-2013\60W85\10\1 South Cook | DRAWN - Summary of Quantities.dgn | REVISED - | | SCALE: N.T.S. | SHEET NO. | OF | SHEETS | STA. | TO STA. | COOK | 84 | 06 |
| | PLOT SCALE : 40.0000' / 1" | CHECKED - PKG | REVISED - | | CONTRACT NO. 60W85 | | | | | | | | |
| | PLOT DATE : 10/24/2013 | DATE - 8/15/2013 | REVISED - | | FED. ROAD DIST. NO. ILLINOIS | | | | FED. AID PROJECT | | | | |

REV. 10-10-13

| CODE NUMBER | ITEM | UNIT | TOTAL QUANTITY | CONSTRUCTION CODE 0021 | | | | | | | | | | | | | | | | | | | | | | | |
|-------------|---|--------|----------------|------------------------|---|---|---|---|---|---|---|---|----|----|----|----|----|----|----|----|----|----|----|----|----|----|----|
| | | | | TRAFFIC SIGNAL | | | | | | | | | | | | | | | | | | | | | | | |
| | | | | URBAN | | | | | | | | | | | | | | | | | | | | | | | |
| | | | | 1 | 2 | 3 | 4 | 5 | 6 | 7 | 8 | 9 | 10 | 11 | 12 | 13 | 14 | 15 | 16 | 17 | 18 | 19 | 20 | 21 | 22 | 23 | 24 |
| 67000400 | ENGINEER'S FIELD OFFICE, TYPE A | CAL MO | 6 | 6 | | | | | | | | | | | | | | | | | | | | | | | |
| 67100100 | MOBILIZATION | L SUM | 1 | 1 | | | | | | | | | | | | | | | | | | | | | | | |
| 70102635 | TRAFFIC CONTROL AND PROTECTION, STANDARD 701701 | L SUM | 1 | 1 | | | | | | | | | | | | | | | | | | | | | | | |
| 85000200 | MAINTENANCE OF EXISTING TRAFFIC SIGNAL INSTALLATION | EACH | 64 | 28 | 1 | 1 | 1 | 2 | 1 | 2 | 1 | 1 | 1 | 2 | 5 | 2 | 2 | 5 | 1 | 1 | 1 | 1 | 1 | 2 | | | |
| 88030020 | SIGNAL HEAD, LED, 1-FACE, 3-SECTION, MAST ARM MOUNTED | EACH | 86 | 32 | | | | | | | | | | 14 | | | 2 | 5 | | 2 | 4 | 2 | 2 | 4 | 7 | | |
| 88030050 | SIGNAL HEAD, LED, 1-FACE, 3-SECTION, BRACKET MOUNTED | EACH | 47 | 21 | 4 | | | | | | | | | 6 | | | 3 | | | | | | | 2 | | | |
| 88030070 | SIGNAL HEAD, LED, 1-FACE, 4-SECTION, BRACKET MOUNTED | EACH | 4 | | | | | | | | | | | | | | 1 | 2 | | | | | | 1 | | | |
| 88030080 | SIGNAL HEAD, LED, 1-FACE, 4-SECTION, MAST ARM MOUNTED | EACH | 5 | 2 | | | | | | | | | | | | | | 2 | | | | | | 1 | | | |
| 88030100 | SIGNAL HEAD, LED, 1-FACE, 5-SECTION, BRACKET MOUNTED | EACH | 42 | 16 | | | | | | | | | | 8 | | | | 2 | | 1 | 4 | 2 | | 4 | | | |
| 88030110 | SIGNAL HEAD, LED, 1-FACE, 5-SECTION, MAST ARM MOUNTED | EACH | 107 | 48 | 4 | | | | | | | | | 10 | | | 4 | 2 | | 2 | 4 | 6 | 3 | 8 | 8 | | |
| 88030210 | SIGNAL HEAD, LED, 2-FACE, 3-SECTION, BRACKET MOUNTED | EACH | 12 | 3 | | | | | | | 1 | 2 | 1 | | | | 3 | | | 1 | | | | 1 | | | |
| 88030220 | SIGNAL HEAD, LED, 2-FACE, 5-SECTION, BRACKET MOUNTED | EACH | 8 | 3 | | | | | | | | | | | | | | | | | | | 2 | 2 | 1 | | |
| 88030230 | SIGNAL HEAD, LED, 2-FACE, 1-3 SECTION, 1-4 SECTION, BRACKET MOUNTED | EACH | 4 | 2 | | | | | | | | | | | | | 1 | | | | | | | 1 | | | |
| 88030240 | SIGNAL HEAD, LED, 2-FACE, 1-3 SECTION, 1-5 SECTION, BRACKET MOUNTED | EACH | 47 | 23 | 4 | | | | | | 1 | 2 | 1 | | 6 | | 4 | | | 2 | | | 3 | 1 | | | |

Rev. 10-28-13

CONTROLLER SEQUENCE

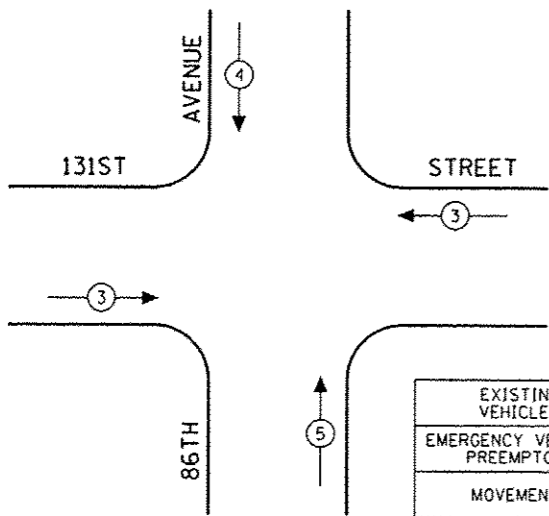


LEGEND

- ◉ DUAL ENTRY PHASE
- ◻ SINGLE ENTRY PHASE
- ◊ O.L. OVERLAP
- ◉ PEDESTRIAN PHASE
- NUMBER REFERS TO ASSOCIATED PHASE

EXISTING PHASE DESIGNATION DIAGRAM

EMERGENCY VEHICLE PREEMPTION SEQUENCE

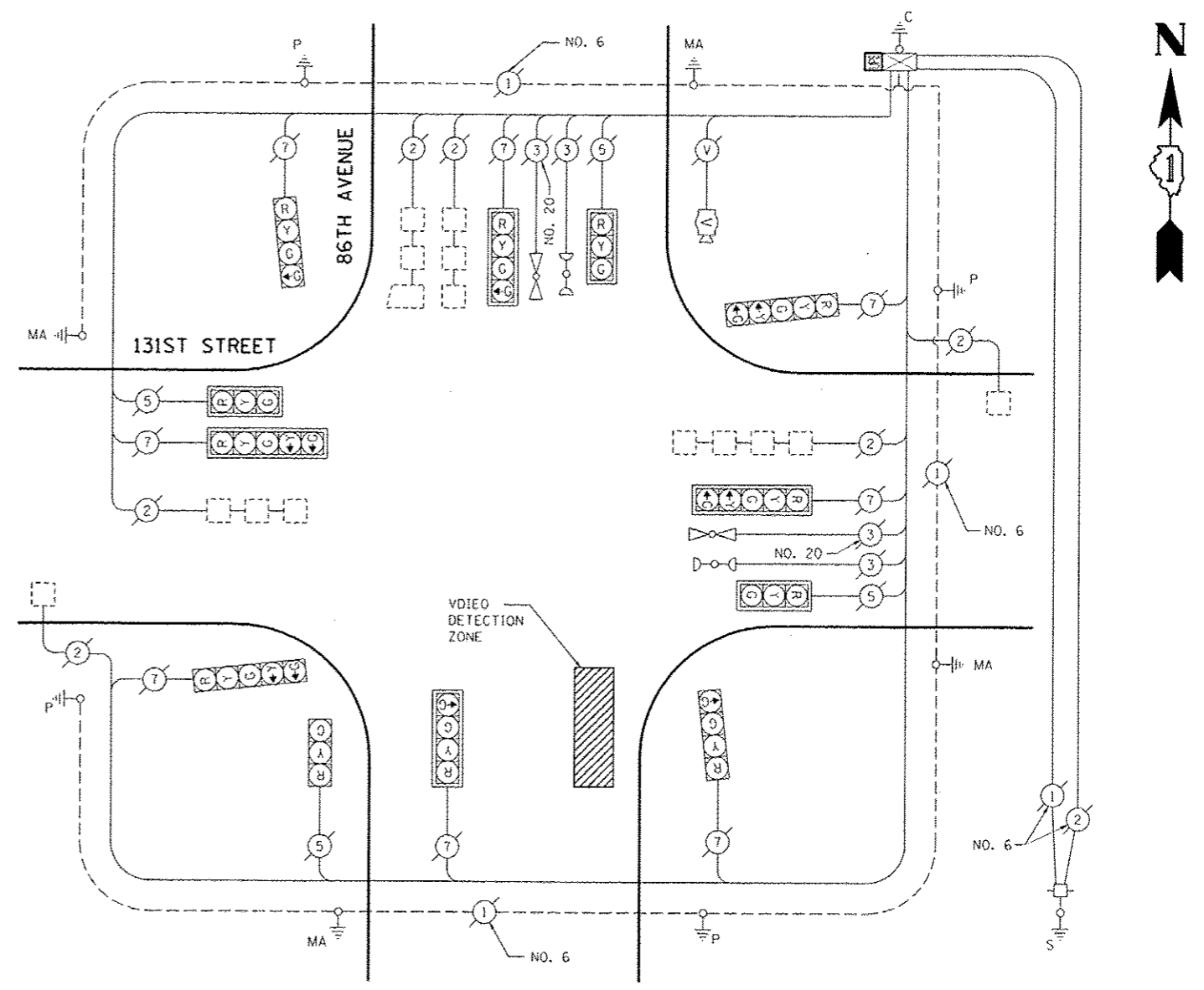


| EXISTING EMERGENCY VEHICLE PREEMPTORS | | | |
|---------------------------------------|---|---|---|
| EMERGENCY VEHICLE PREEMPTOR | 3 | 4 | 5 |
| MOVEMENT | ↔ | ↓ | ↑ |

NEED WORK ON WATT TABLE

| I.D.O.T. TRAFFIC SIGNAL INSTALLATION ELECTRICAL SERVICE REQUIREMENTS | | | | | TOTAL WATTAGE |
|--|----------|---------|-----|------------|----------------|
| TYPE | NO LAMPS | WATTAGE | | %OPERATION | |
| | | INCAND. | LED | | |
| SIGNAL (RED) | 12 | | 17 | 0.50 | 102.00 |
| (YELLOW) | 12 | | 25 | 0.25 | 75.00 |
| (GREEN) | 16 | | 15 | 0.25 | 60.00 |
| ARROW | 8 | | 12 | 0.10 | 9.60 |
| PED. SIGNAL | | | 25 | 1.00 | |
| CONTROLLER | 1 | | 100 | 1.00 | 100.00 |
| ILLUM. SIGN | | | | 0.05 | |
| VEH. DETECTION | 6 | | 5 | 1.00 | 30.00 |
| FLASHER | | | | 0.50 | |
| ENERGY COSTS TO: | | | | | TOTAL = 376.60 |

ILLINOIS DEPARTMENT OF TRANSPORTATION
201 WEST CENTER COURT
SCHAUMBURG, ILLINOIS 60196-1096
ENERGY SUPPLY CONTACT: XXX XXXXX
PHONE: (XXX) XXX-XXXX
COMPANY: COMMONWEALTH EDISON



CABLE PLAN
(NOT TO SCALE)

SCHEDULE OF QUANTITIES

| QUANTITY | UNIT | ITEM |
|----------|------|---|
| 1 | EACH | MAINTENANCE OF EXISTING TRAFFIC SIGNAL INSTALLATION |
| 1 | EACH | MODIFY EXISTING CONTROLLER CABINET |
| 1 | EACH | UNINTERRUPTIBLE POWER SUPPLY, SPECIAL |

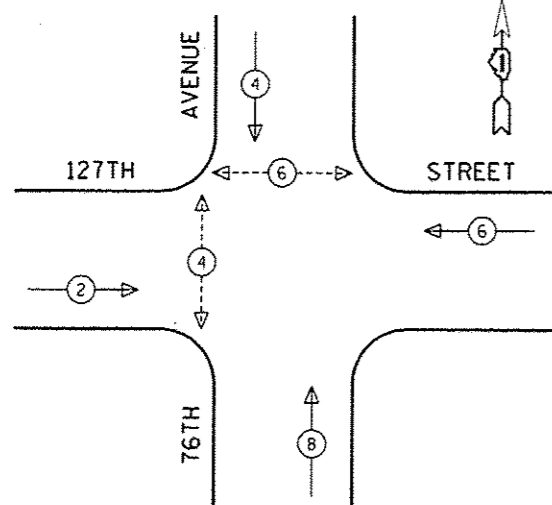
REV 10-10-13

THE TRAFFIC SIGNAL CONTROL EQUIPMENT FOR THIS PROJECT SHALL BE "EAGLE" TO MATCH THE EXISTING ADJACENT SYSTEM.

TS* 1913 PALOS HILLS/PALOS TWP

| | | | | | | | | | | |
|--|---------------------------|----------------|------------------------|---|---|---------------------|--------------------|---|-----------------|--------------|
| FILE NAME: S:\WP\Design\111 PLANS to SPRINGFIELD\2013\111-86-2013\EDW\051013\131st St & 86th Ave.dgn | USER NAME: rrossdavequazy | DESIGNED - PKG | REVISED - IRV 10-10-13 | STATE OF ILLINOIS DEPARTMENT OF TRANSPORTATION | SCHEDULE OF QUANTITIES, CABLE PLAN, PHASE DESIGNATION DIAGRAM AND EMERGENCY VEHICLE PREEMPTION 131ST STREET AT 86TH AVENUE | F.A.P. RTE. VAR. | SECTION 2013-040TS | COUNTY COOK | TOTAL SHEETS 84 | SHEET NO. 71 |
| PLOT SCALE: 1/8" = 1'-0" | CHECKED - PKG | REVISOR - | SCALE: N.T.S. | | | SHEET NO. OF SHEETS | STA. TO STA. | FED. ROAD DIST. NO. ILLINOIS FED. AID PROJECT | | |
| PLOT DATE: 8/15/2013 | DATE: 8/15/2013 | REVISOR - | CONTRACT NO. 60W85 | | | | | | | |

CONTROLLER SEQUENCE

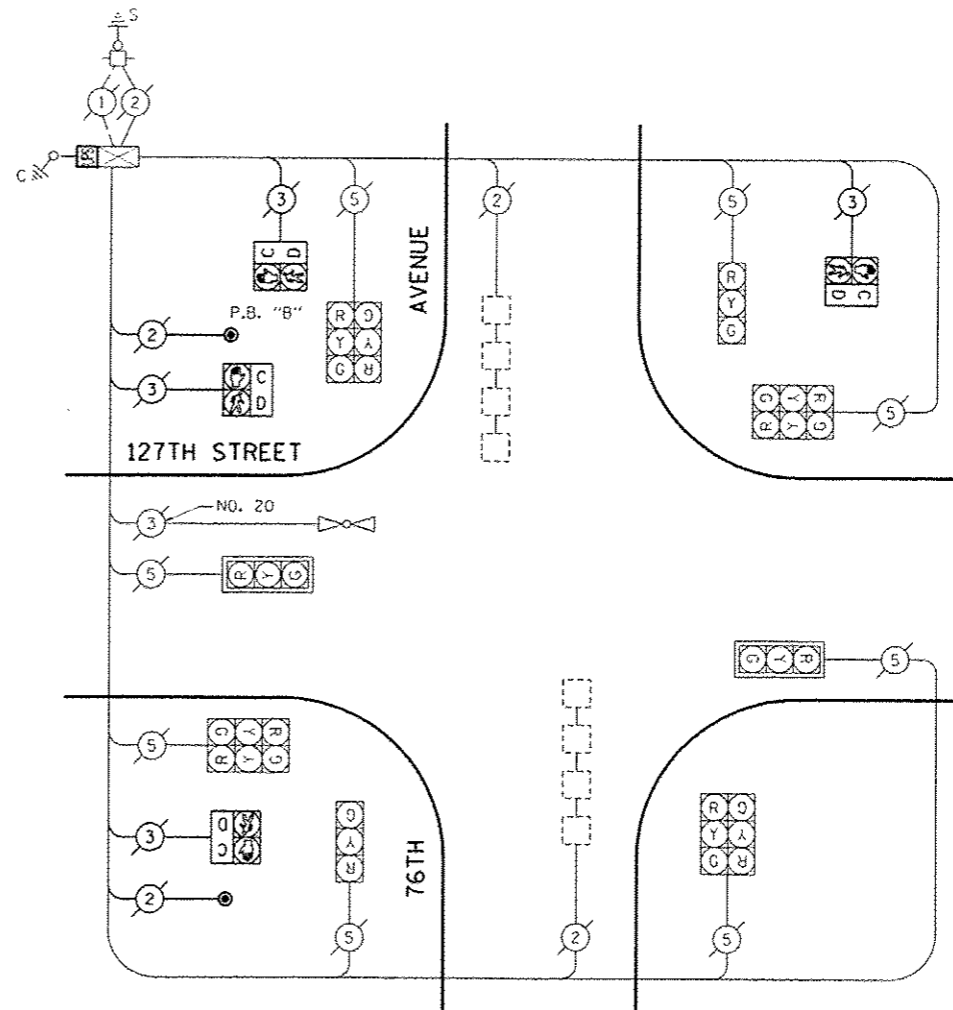
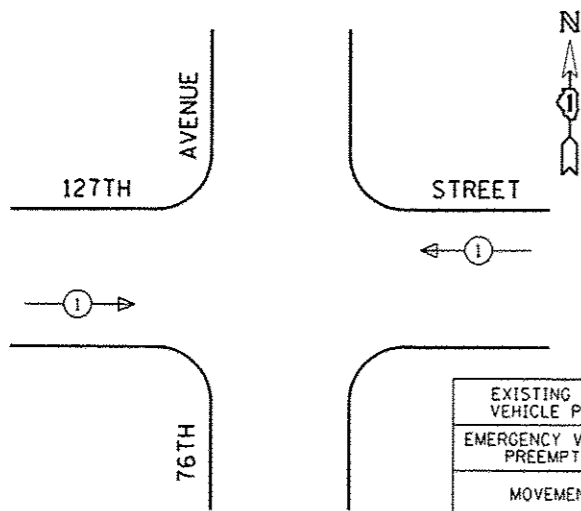


EXISTING PHASE DESIGNATION DIAGRAM

LEGEND

- ◀●▶ DUAL ENTRY PHASE
- ◀■▶ SINGLE ENTRY PHASE
- ◀◇▶ O.L. OVERLAP
- ◀●▶ PEDESTRIAN PHASE
- NUMBER REFERS TO ASSOCIATED PHASE

EMERGENCY VEHICLE PREEMPTION SEQUENCE



CABLE PLAN

(NOT TO SCALE)

PUSH-BUTTON NOTE:
PUSH-BUTTON "B" SHALL PLACE A CALL IN PHASES 4 AND 6.

| I.D.O.T. TRAFFIC SIGNAL INSTALLATION ELECTRICAL SERVICE REQUIREMENTS | | | | | TOTAL WATTAGE |
|--|----------|---------|-----|------------|----------------|
| TYPE | NO LAMPS | WATTAGE | | %OPERATION | |
| | | INCAND. | LED | | |
| SIGNAL (RED) | 12 | 135 | 17 | 0.50 | 102.00 |
| (YELLOW) | 12 | 135 | 25 | 0.25 | 75.00 |
| (GREEN) | 12 | 135 | 15 | 0.25 | 45.00 |
| ARROW | | 135 | 12 | 0.10 | |
| PED. SIGNAL | 4 | 90 | 25 | 1.00 | 100.00 |
| CONTROLLER | 1 | 100 | 100 | 1.00 | 100.00 |
| ILLUM. SIGN | | 84 | | 0.05 | |
| FLASHER | | 135 | 25 | 0.50 | |
| ENERGY COSTS TO: | | | | | TOTAL = 422.00 |
| ILLINOIS DEPARTMENT OF TRANSPORTATION 201 WEST CENTER COURT SCHAUMBURG, ILLINOIS 60196-1096 ENERGY SUPPLY CONTACT: XXX XXXXX PHONE: (XXX) XXX-XXXX COMPANY: COMMONWEALTH EDISON | | | | | |

SCHEDULE OF QUANTITIES

| QUANTITY | UNIT | ITEM |
|----------|------|---|
| 1 | EACH | MAINTENANCE OF EXISTING TRAFFIC SIGNAL INSTALLATION |
| 4 | EACH | PEDESTRIAN SIGNAL HEAD, LED, 1-FACE, BRACKET MOUNTED WITH COUNTDOWN TIMER |
| 1 | EACH | MODIFY EXISTING CONTROLLER CABINET |
| 1 | EACH | REMOVE EXISTING TRAFFIC SIGNAL EQUIPMENT |
| 1 | EACH | UNINTERRUPTIBLE POWER SUPPLY, SPECIAL |
| 2 | EACH | PEDESTRIAN PUSH-BUTTON, NON-LATCHING |

REMOVAL OF EXISTING TRAFFIC SIGNAL EQUIPMENT

THE FOLLOWING ITEMS SHALL BE REMOVED BY THE CONTRACTOR AND SHALL BE DISPOSED OF BY THEM OUTSIDE THE RIGHT-OF-WAY AT THEIR EXPENSE. THE SALVAGE VALUE OF THE REMOVED EQUIPMENT SHALL BE REFLECTED IN THE CONTRACT BID PRICE.

| | | |
|---|------|---|
| 4 | EACH | PEDESTRIAN SIGNAL HEAD, 1-FACE, BRACKET MOUNTED |
| 2 | EACH | PEDESTRIAN PUSH-BUTTON |

THE TRAFFIC SIGNAL CONTROL EQUIPMENT FOR THIS PROJECT SHALL BE "ECONOLITE" TO MATCH THE EXISTING ADJACENT SYSTEM.

REV 10-10-13

TS# 3975
PALOS HEIGHTS - PALOS PARK

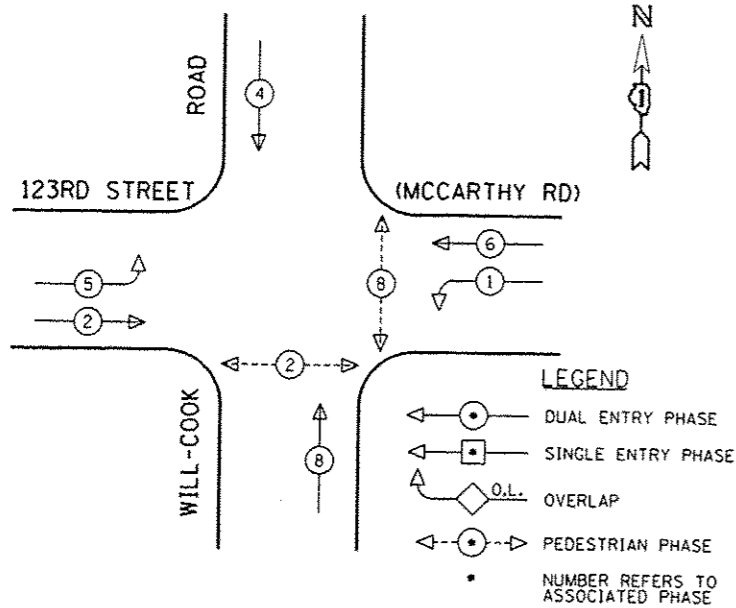
STATE OF ILLINOIS
DEPARTMENT OF TRANSPORTATION

SCHEDULE OF QUANTITIES, CABLE PLAN, PHASE DESIGNATION
DIAGRAM AND EMERGENCY VEHICLE PREEMPTION
127TH STREET AT 76TH AVENUE

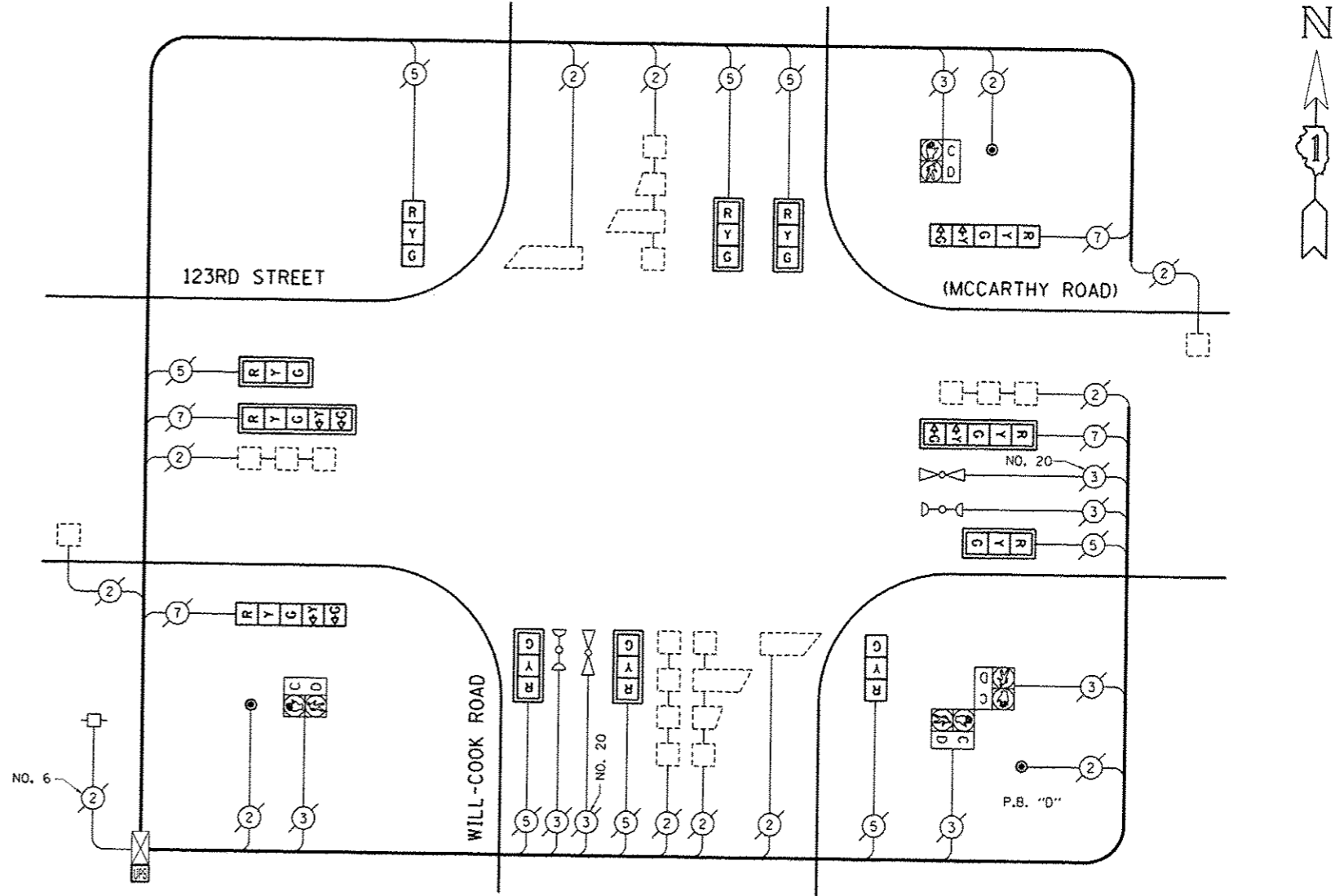
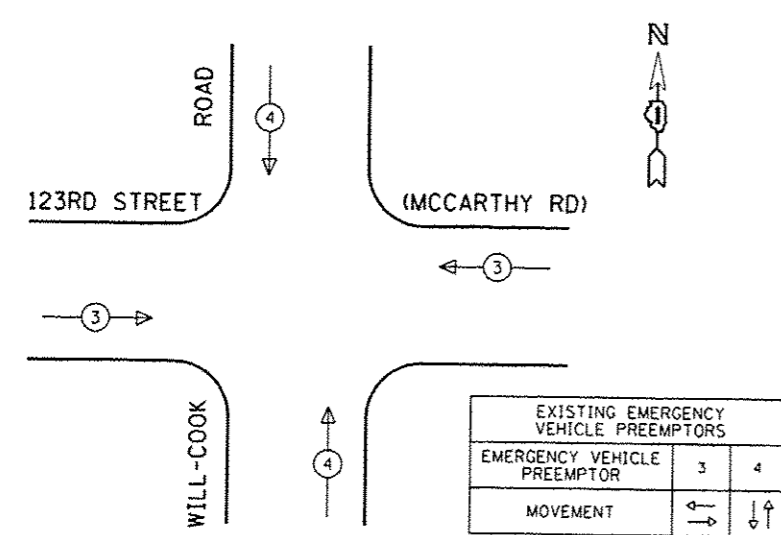
| F.A.P. R.T.E. | SECTION | COUNTY | TOTAL SHEET NO. |
|---|------------|--------|--------------------|
| VAR. | 2013-040TS | COOK | 84 13. |
| | | | CONTRACT NO. 60W85 |
| FED. ROAD DIST. NO. ILLINOIS FED. AID PROJECT | | | |

SCALE: N.T.S. SHEET NO. OF SHEETS STA. TO STA.

CONTROLLER SEQUENCE



EMERGENCY VEHICLE PREEMPTION SEQUENCE



CABLE PLAN
(NOT TO SCALE)

PUSH-BUTTON NOTE:
PUSH-BUTTON "D" SHALL PLACE A CALL IN PHASES 2 AND 8.

SCHEDULE OF QUANTITIES

| QUANTITY | UNIT | ITEM |
|----------|------|---|
| 1 | EACH | MAINTENANCE OF EXISTING TRAFFIC SIGNAL INSTALLATION |
| 6 | EACH | SIGNAL HEAD, LED, 1-FACE, 3-SECTION, MAST ARM MOUNTED |
| 2 | EACH | SIGNAL HEAD, LED, 1-FACE, 3-SECTION, BRACKET MOUNTED |
| 2 | EACH | SIGNAL HEAD, LED, 1-FACE, 5-SECTION, BRACKET MOUNTED |
| 2 | EACH | SIGNAL HEAD, LED, 1-FACE, 5-SECTION, MAST ARM MOUNTED |
| 2 | EACH | PEDESTRIAN SIGNAL HEAD, LED, 1-FACE, BRACKET MOUNTED WITH COUNTDOWN TIMER |
| 1 | EACH | PEDESTRIAN SIGNAL HEAD, LED, 2-FACE, BRACKET MOUNTED WITH COUNTDOWN TIMER |
| 8 | EACH | TRAFFIC SIGNAL BACKPLATE, LOUVERED, ALUMINUM |
| 1 | EACH | MODIFY EXISTING CONTROLLER CABINET |
| 1 | EACH | REMOVE EXISTING TRAFFIC SIGNAL EQUIPMENT |
| 1 | EACH | UNINTERRUPTIBLE POWER SUPPLY, SPECIAL |
| 3 | EACH | PEDESTRIAN PUSH-BUTTON, NON-LATCHING |

REMOVAL OF EXISTING TRAFFIC SIGNAL EQUIPMENT

THE FOLLOWING ITEMS SHALL BE REMOVED BY THE CONTRACTOR AND SHALL BE DISPOSED OF BY THEM OUTSIDE THE RIGHT-OF-WAY AT THEIR EXPENSE. THE SALVAGE VALUE OF THE REMOVED EQUIPMENT SHALL BE REFLECTED IN THE CONTRACT BID PRICE.

| | | |
|---|------|--|
| 6 | EACH | SIGNAL HEAD, 1-FACE, 3-SECTION, MAST ARM MOUNTED |
| 2 | EACH | SIGNAL HEAD, 1-FACE, 3-SECTION, BRACKET MOUNTED |
| 2 | EACH | SIGNAL HEAD, 1-FACE, 5-SECTION, BRACKET MOUNTED |
| 2 | EACH | SIGNAL HEAD, 1-FACE, 5-SECTION, MAST ARM MOUNTED |
| 2 | EACH | PEDESTRIAN SIGNAL HEAD, 1-FACE, BRACKET MOUNTED |
| 1 | EACH | PEDESTRIAN SIGNAL HEAD, 2-FACE, BRACKET MOUNTED |
| 8 | EACH | TRAFFIC SIGNAL BACKPLATE |
| 3 | EACH | PEDESTRIAN PUSH-BUTTON |

THE TRAFFIC SIGNAL CONTROL EQUIPMENT FOR THIS PROJECT SHALL BE "ECONOLITE" TO MATCH THE EXISTING ADJACENT SYSTEM.

| I.D.O.T. TRAFFIC SIGNAL INSTALLATION ELECTRICAL SERVICE REQUIREMENTS | | | | | TOTAL WATTAGE |
|--|----------|-----------------|-----|------------|----------------|
| TYPE | NO LAMPS | WATTAGE INCAND. | LED | %OPERATION | |
| SIGNAL (RED) | 12 | 135 | 17 | 0.50 | 102.00 |
| (YELLOW) | 12 | 135 | 25 | 0.25 | 75.00 |
| (GREEN) | 12 | 135 | 15 | 0.25 | 45.00 |
| ARROW | 8 | 135 | 12 | 0.10 | 9.60 |
| PED. SIGNAL | 4 | 90 | 25 | 1.00 | 100.00 |
| CONTROLLER | 1 | 100 | 100 | 1.00 | 100.00 |
| ILLUM. SIGN | | 84 | | 0.05 | |
| FLASHER | | 135 | 25 | 0.50 | |
| ENERGY COSTS TO: | | | | | TOTAL = 431.60 |

ILLINOIS DEPARTMENT OF TRANSPORTATION
201 WEST CENTER COURT
SCHAUMBURG, ILLINOIS 60196-1096
ENERGY SUPPLY CONTACT: XXX XXXXX
PHONE: (XXX) XXX-XXXX
COMPANY: COMMONWEALTH EDISON

| | | | | | | | | | | | |
|--|-------------------------|----------------|--------------------|--|---|---|--------------------|--|-----------------|--------------|--------------------|
| FILE NAME * | USER NAME * rosadozquez | DESIGNED - B&G | REVISED - 10-10-13 | STATE OF ILLINOIS DEPARTMENT OF TRANSPORTATION | SCHEDULE OF QUANTITIES, CABLE PLAN, PHASE DESIGNATION DIAGRAM AND EMERGENCY VEHICLE PREEMPTION 123RD STREET (MCCARTHY ROAD) AT WILL-COOK ROAD | F.A.P. RTE. VAR. | SECTION 2013-040TS | COUNTY COOK | TOTAL SHEETS 84 | SHEET NO. 79 | CONTRACT NO. 60W85 |
| PLOT SCALE: 40,000' / in. PLOT DATE: 10/10/2013 | | | | CHECKED - PKG DATE - 8/15/2013 | | SCALE: N.T.S. SHEET NO. OF SHEETS STA. TO STA. | | TS* 1007 PALOS PARK PALOS TOWNSHIP ILLINOIS FED. AID PROJECT | | | |