

STATE OF ILLINOIS
DEPARTMENT OF TRANSPORTATION
DIVISION OF HIGHWAYS

**PROPOSED
HIGHWAY PLANS**

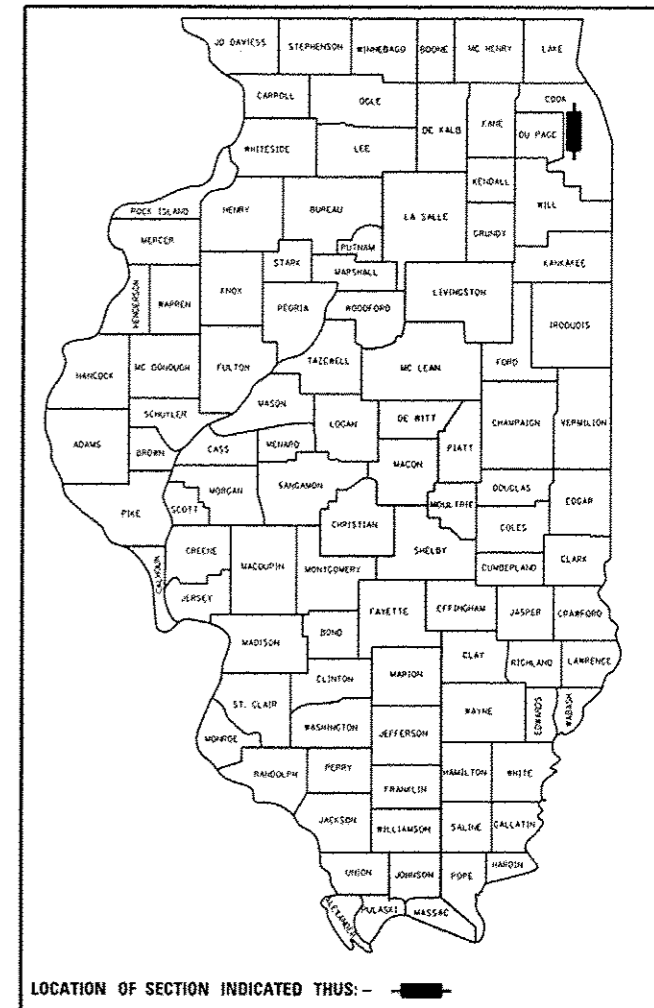
F.A.P. ROUTE 372: IL 171 (FIRST AVE)
OVER DES PLAINES RIVER
SECTION: 0606-BR
SUBSTRUCTURE REPAIRS
COOK COUNTY
C-91-397-13

F.A.P. RTE.	SECTION	COUNTY	TOTAL SHEETS	SHEET NO.
372	0606-BR	COOK	9	1
		ILLINOIS	CONTRACT NO. 60W88	

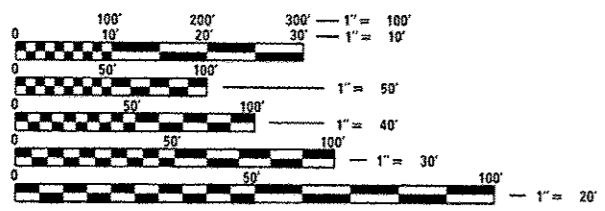
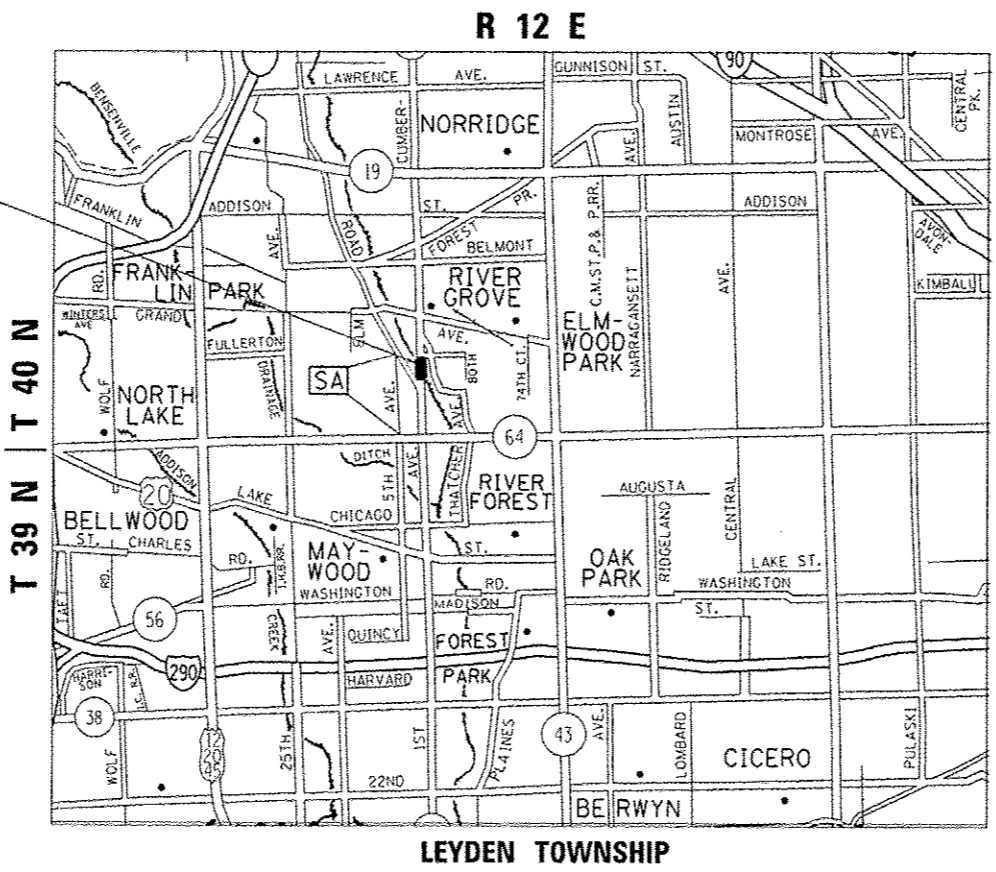
FOR INDEX OF SHEETS, SEE SHEET NO. 2

THIS IMPROVEMENT IS LOCATED
IN THE VILLAGE OF RIVER GROVE

D-91-397-13



SN 016-0697-IL 171 (FIRST AVE)
OVER DES PLAINES RIVER



FULL SIZE PLANS HAVE BEEN PREPARED USING STANDARD ENGINEERING SCALES. REDUCED SIZED PLANS WILL NOT CONFORM TO STANDARD SCALES. IN MAKING MEASUREMENTS ON REDUCED PLANS, THE ABOVE SCALES MAY BE USED.

J.U.L.I.E.
JOINT UTILITY LOCATION INFORMATION FOR EXCAVATION
1-800-892-0123
OR 811

PROJECT ENGINEER: J. ALAIN MIDY (847) 221-3056
PROJECT MANAGER: ISSAM RAYYAN (847) 847-4178

CONTRACT NO. 60W88

GROSS & NET LENGTH = 193.5 FT. = 0.03667 MILE

TRAFFIC DATA
ADT = 17900
POSTED SPEED LIMIT = 40 MPH

STATE OF ILLINOIS
DEPARTMENT OF TRANSPORTATION
DIVISION OF HIGHWAYS

SUBMITTED August 21, 2013
John F. ...
DEPUTY DIRECTOR OF HIGHWAYS, REGION ENGINEER

October 4, 2013
John D. Baranelli, P.E.
ENGINEER OF DESIGN AND ENVIRONMENT

October 4, 2013
Omer Osman, P.E.
DIRECTOR OF HIGHWAYS, CHIEF ENGINEER

PRINTED BY THE AUTHORITY
OF THE STATE OF ILLINOIS

GENERAL NOTES

BEFORE STARTING ANY EXCAVATION, THE CONTRACTOR SHALL CALL "JULIE" AT (800) 892-0123 OR 811 FOR FIELD LOCATIONS OF BURIED ELECTRIC, TELEPHONE AND GAS UTILITIES. 48 HOUR NOTIFICATION IS REQUIRED.

THE CONTRACTOR SHALL COORDINATE CONSTRUCTION ACTIVITIES WITH UTILITY COMPANIES, AND THE VILLAGE OF RIVER GROVE.

THE CONTRACTOR WILL NOT BE ALLOWED TO SET UP A YARD OR FIELD OFFICE ON STATE PROPERTY WITHOUT WRITTEN PERMISSION FROM THE DEPARTMENT.

THE CONTRACTOR SHALL CONTACT THE DISTRICT ONE TRAFFIC CONTROL SUPERVISOR AT (847)705-4470 A MINIMUM OF 72 HOURS IN ADVANCE OF BEGINNING WORK

THE CONTRACTOR SHALL BE REQUIRED TO PROVIDE ACCESS TO ABUTTING PROPERTY AT ALL TIMES DURING THE CONSTRUCTION OF THIS PROJECT.

DO NOT SCALE PLANS FOR CONSTRUCTION DIMENSIONS.

PLAN DIMENSIONS AND DETAILS RELATIVE TO EXISTING PLANS ARE SUBJECT TO NOMINAL CONSTRUCTION VARIATIONS. THE CONTRACTOR SHALL FIELD VERIFY EXISTING DIMENSIONS AND DETAILS AFFECTING NEW CONSTRUCTION AND MAKE NECESSARY APPROVED ADJUSTMENTS PRIOR TO CONSTRUCTION OR ORDERING OF MATERIALS. SUCH VARIATIONS SHALL NOT BE CAUSE FOR ADDITIONAL COMPENSATION FOR A CHANGE IN SCOPE OF THE WORK, HOWEVER, THE CONTRACTOR WILL BE PAID FOR THE QUANTITY ACTUALLY FURNISHED BASED AT THE UNIT PRICE BID FOR THE WORK.

THESE PLANS HAVE BEEN PREPARED FROM NOTES RECEIVED FROM THE BUREAU OF MAINTENANCE BRIDGE INSPECTORS.

THE DEPARTMENT HAS DETERMINED THAT IN STREAM WORK IS NOT REQUIRED FOR THE WORK SPECIFIED IN THIS CONTRACT. THE DEPARTMENT HAS NOT OBTAINED A 404 PERMIT. IF THE CONTRACTOR CHOOSES TO USE ACTIVITIES REQUIRING AN USACE 404 PERMIT IT IS THE CONTRACTOR'S RESPONSIBILITY TO SECURE THE PROPER USACE PERMITS.

THE CONTRACTOR SHALL OBTAIN COAST GUARD APPROVAL FOR ANY WORK THAT MAY INTERFERE WITH NAVIGATIONAL OPERATIONS OF THE NAVIGABLE WATERS. A WORK PLAN SHALL BE PREPARED BY THE CONTRACTOR, REVIEWED AND APPROVED BY THE ENGINEER AND BE SUBMITTED BY THE ENGINEER TO THE COAST GUARD AT THE ADDRESS LISTED BELOW FOR APPROVAL.

BRIDGE ADMINISTRATOR
US COAST GUARD
NINTH COAST GUARD DISTRICT
1240 E. NINTH ST
CLEVELAND, OH 44199-2060

INDEX OF SHEETS

SHEET NO.	DESCRIPTION
1	TITLE SHEET
2	INDEX OF SHEETS, STATE STANDARDS, AND GENERAL NOTES
3	SUMMARY OF QUANTITIES
4-8	BRIDGE REPAIR DETAILS
9	ARTERIAL ROAD INFORMATION SIGN (TC-22)

STATE STANDARDS

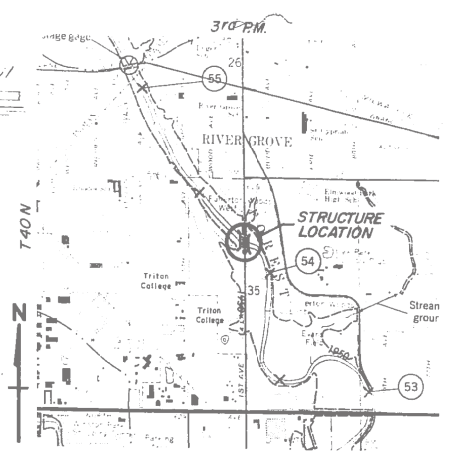
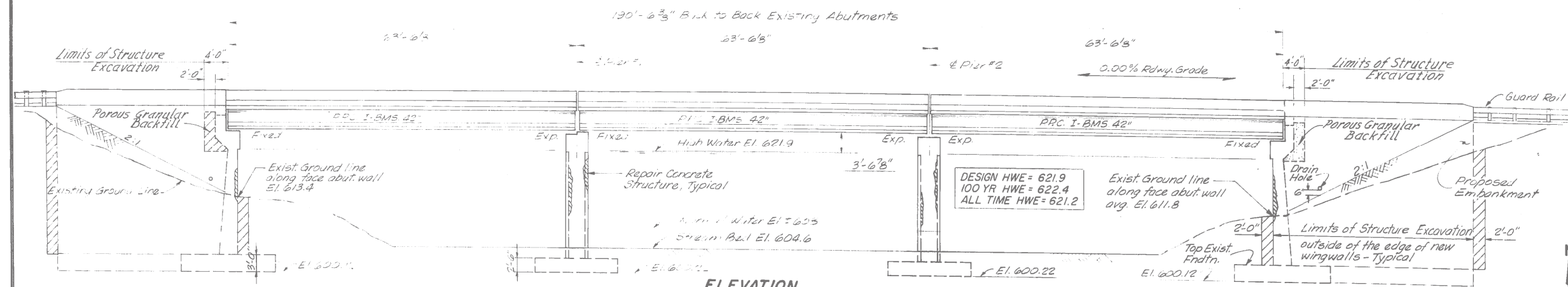
STANDARD NO.	DESCRIPTION
701101-03	OFF-RD OPERATIONS, MULTILANE, 15' TO 24" FROM PAVEMENT EDGE
701427-01	TRAFFIC CONTROL DEVICES
701606-08	URBAN LANE CLOSURE MULTILANE, 2W WITH MOUNTABLE MEDIAN
701901-02	TRAFFIC CONTROL DEVICES

FILE NAME =	USER NAME = josephm	DESIGNED -	REVISED -	STATE OF ILLINOIS DEPARTMENT OF TRANSPORTATION	INDEX OF SHEETS, STATE STANDARDS AND GENERAL NOTES	F.A.P. RTE.	SECTION	COUNTY	TOTAL SHEETS	SHEET NO.
c:\pwork\pwidet\josephm\8349815\0136	3-sht-plandgn	DRAWN -	REVISED -			372	0606-BR	COOK	9	2
Default	PLOT SCALE = 99.9995' = 1"	CHECKED -	REVISED -							
	PLOT DATE = 8/21/2013	DATE -	REVISED -							
						SCALE:	SHEET	1 OF 1 SHEETS	STA.	TO STA.
						ILLINOIS FED. AID PROJECT				

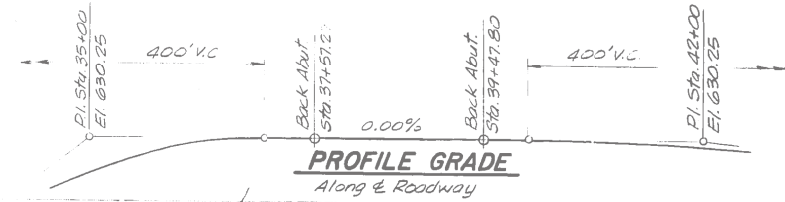
URBAN

SUMMARY OF QUANTITIES					CONSTRUCTION TYPE CODE					SUMMARY OF QUANTITIES					CONSTRUCTION TYPE CODE				
CODE NO	ITEM	UNIT	TOTAL QUANTITIES	100% STATE 0014						CODE NO	ITEM	UNIT	TOTAL QUANTITIES						
X0327638	STREAM GAUGE	EACH	1	1															
67000400	ENGINEER'S FIELD OFFICE, TYPE A	CAL MO	3	3															
67100100	MOBILIZATION	L SUM	1	1															
70102625	TRAFFIC CONTROL AND PROTECTION, STANDARD 701606	L SUM	1	1															
Z0012754	STRUCTURAL REPAIR OF CONCRETE (DEPTH EQUAL TO OR LESS THAN 5 INCHES)	SO FT	593	593															
Z0012755	STRUCTURAL REPAIR OF CONCRETE (DEPTH GREATER THAN 5 INCHES)	SO FT	48	48															
Z0030850	TEMPORARY INFORMATION SIGNING	SO FT	51.4	51.4															
Z0073200	TEMPORARY SHORING AND CRIBBING	EACH	14	14															

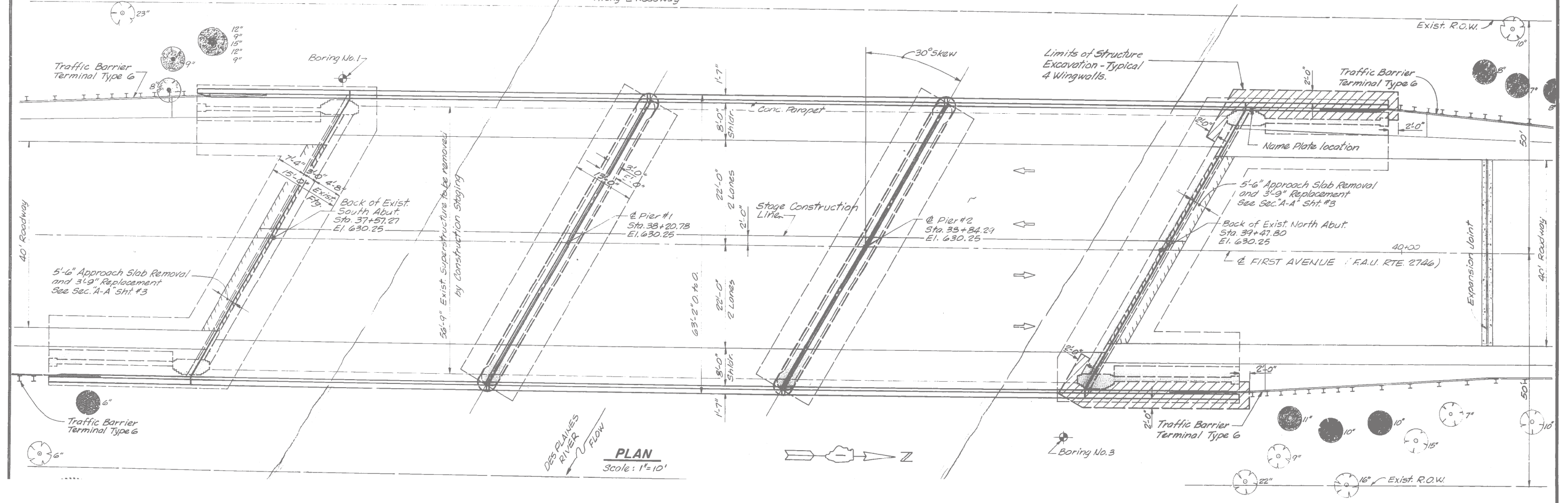
FILE NAME =	USER NAME = Josephm	DESIGNED -	REVISED -	STATE OF ILLINOIS DEPARTMENT OF TRANSPORTATION	SUMMARY OF QUANTITIES	F.A.P. RTE.	SECTION	COUNTY	TOTAL SHEETS	SHEET NO.	
cnw_wor\piper\josephm\034905\0139713-01-plan.dgn		DRAWN -	REVISED -			372	0606-BR	COOK	9	3	
PLOT SCALE = 1000000' / 1"		CHECKED -	REVISED -			CONTRACT NO. 60W88					
PLOT DATE = 8/27/2013		DATE -	REVISED -			FED. ROAD DIST. NO. 1 ILLINOIS FED. AID PROJECT					



BENCH MARKS
 First Avenue Bridge over Des Plaines River, West Walk - Southwest Corner, Chiselad Square Elev. 630.74
 BM 30445- First Ave and Fullerton (River Grove) Concrete Monument on S.W. Corner with Iron Pin set in center. CCHD Elev. 623.533.
 50.0' W. of E. of First Ave.
 44.0' So of E. of Fullerton



DESCRIPTION OF IMPROVEMENT
 The Improvement includes the bridge superstructure replacement and repair of substructure and approaches (includes widening) of the structure carrying First Avenue over the Des Plaines River, consisting of a three-span (190'-6 3/8" back to back of abutments) new reinforced concrete deck slab (63'-2" out to out) on new precast prestressed I-beams, on existing piers and abutments with new caps, utilizing stage construction so as to maintain traffic at all times.

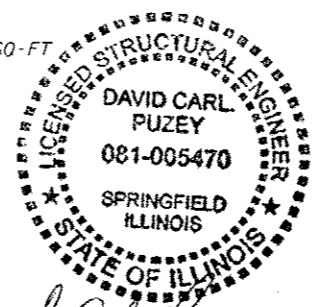


For Information Only

FILE NAME =	USER NAME = josephm	DESIGNED -	REVISED -	STATE OF ILLINOIS DEPARTMENT OF TRANSPORTATION	IL 171 (FIRST AVE) OVER DES PALINES RIVER GENERAL PLAN & ELEVATION	F.A.P. RTE.	SECTION	COUNTY	TOTAL SHEETS	SHEET NO.	
Default	Plot Scale = 100.0000' / in.	DRAWN -	REVISED -			372	0606-BR	COOK	9	4	
	Plot Date = 8/27/2013	CHECKED -	REVISED -			CONTRACT NO. 60W88					
		DATE -	REVISED -			ILLINOIS FED. AID PROJECT					

TOTAL BILL OF MATERIALS

ITEM	UNIT	QUANTITY
STRUCTURAL REPAIR OF CONCRETE ≤ 5"	SQ. FT	593
STRUCTURAL REPAIR OF CONCRETE > 5"	SQ. FT	48
TEMP. SHORING & CRIBBING	EACH	14
STREAM GAUGE	EACH	1



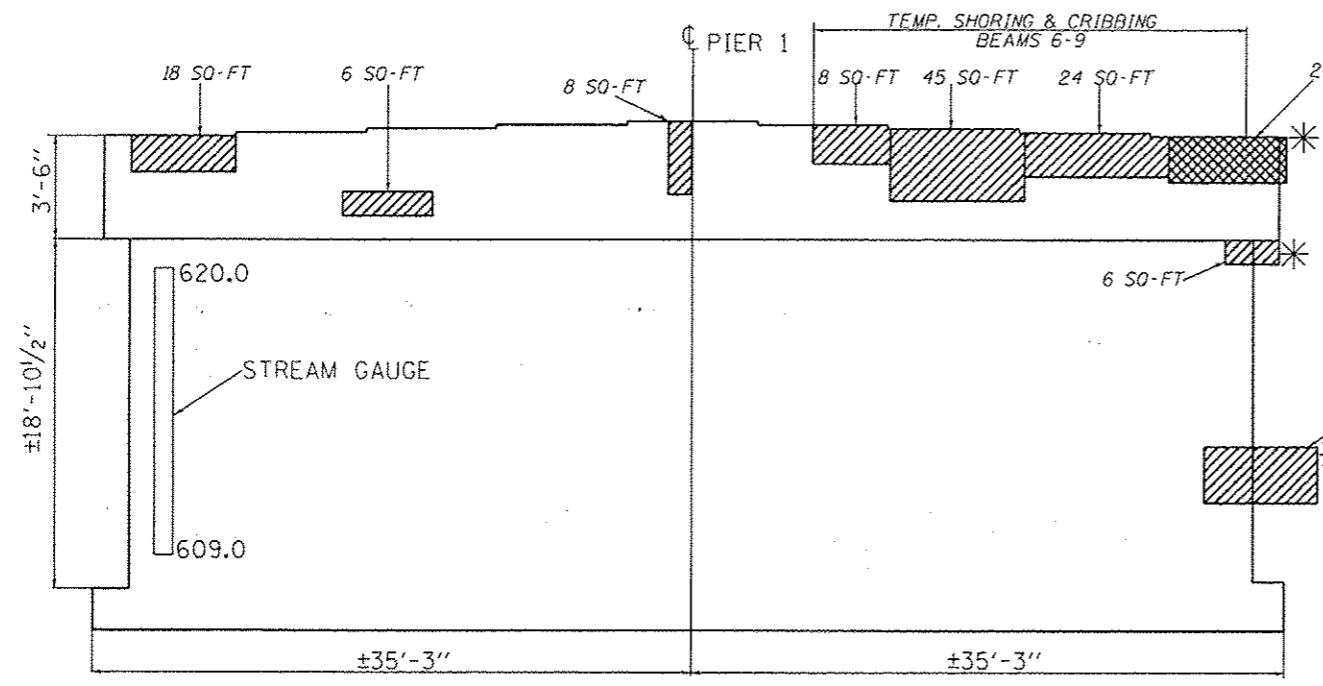
David Carl Puzey 10/1/13 Expires 11/30/14

Pier No.1 BILL OF MATERIALS

ITEM	UNIT	QUANTITY
STRUCTURAL REPAIR OF CONCRETE ≤ 5"	SQ. FT	193
STRUCTURAL REPAIR OF CONCRETE > 5"	SQ. FT	24
TEMP. SHORING & CRIBBING	EACH	4
STREAM GAUGE	EACH	1

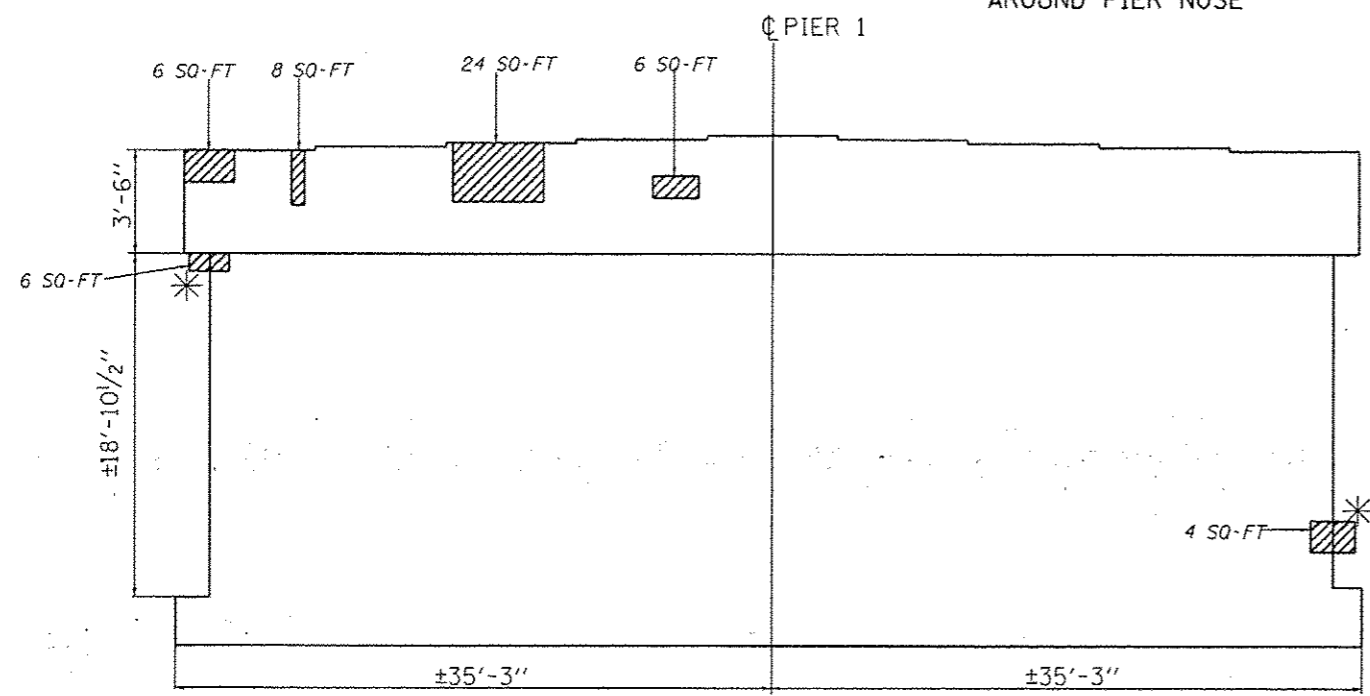
REACTIONS

SPANS 1, 2 & 3 PIERS 1 & 2
R DL= 38.1 KIPS
R SDL= 9.2 KIPS
R LL= 39.5 KIPS
R IMP= 10.6 KIPS
TOTAL= 97.4 KIPS



SOUTH FACE

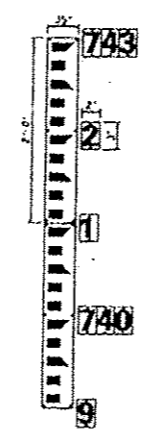
* AROUND PIER NOSE



NORTH FACE

STRUCTURAL REPAIR OF CONCRETE ≤ 5"

STRUCTURAL REPAIR OF CONCRETE > 5"

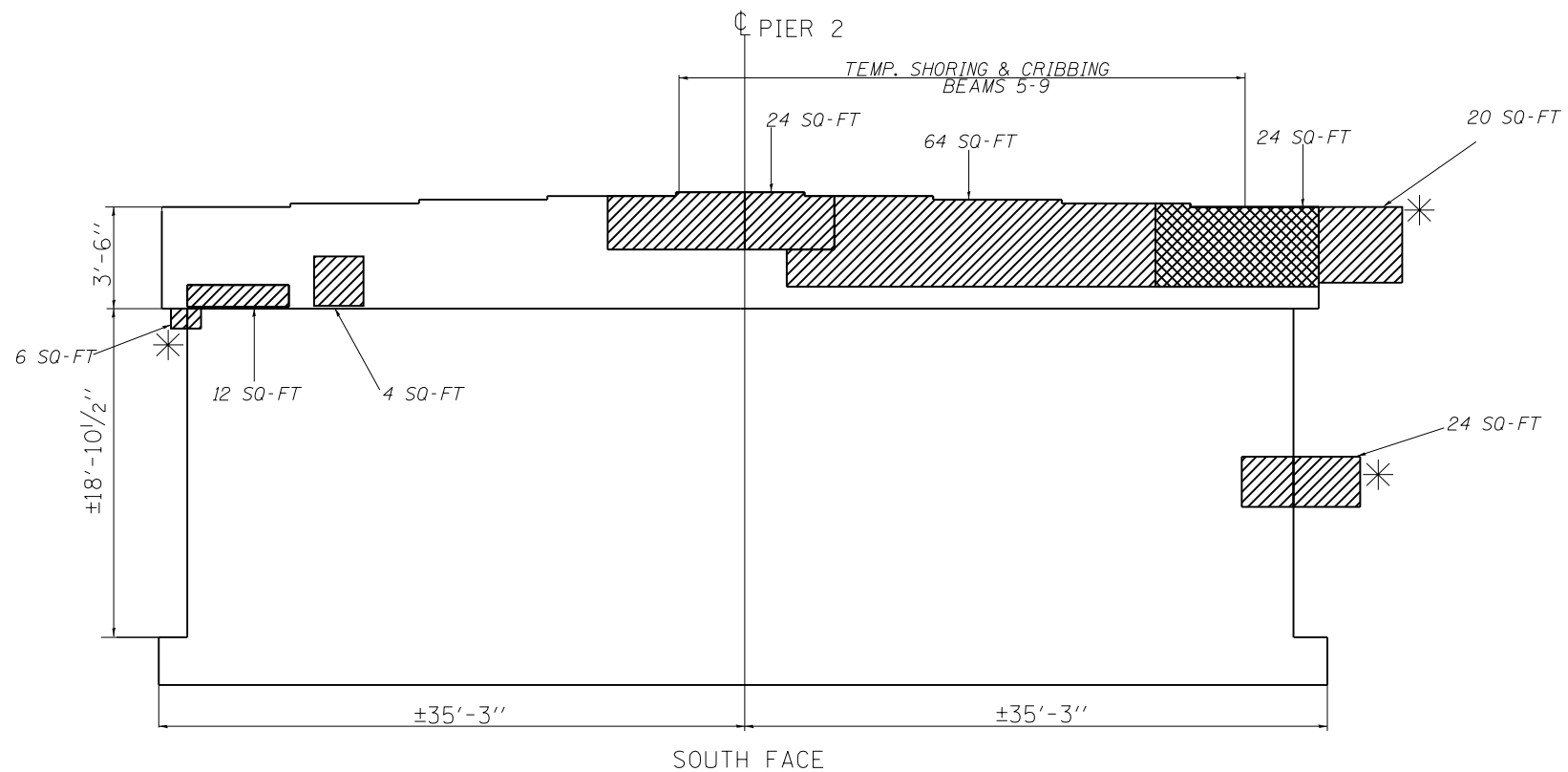


STREAM GAUGE DETAIL

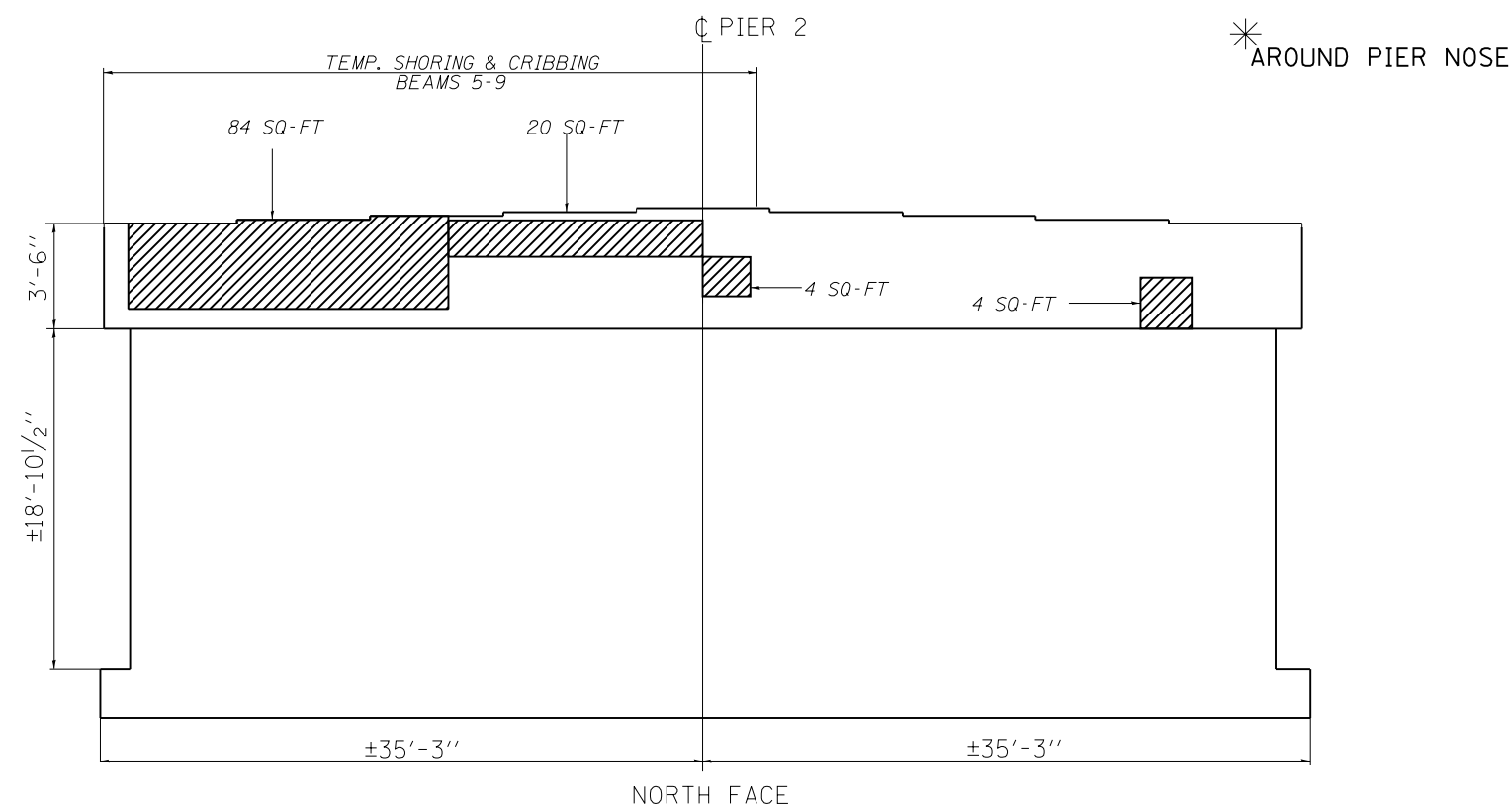
(EXAMPLE)

NOTES:
THE GAUGE PLATES SHALL BE PORCELAIN ENAMELED IRON PLATE GRADUATED IN FEET AND TENTHS, UNNUMBERED, AND 3 1/2" WIDE. GAUGE PLATES SHALL BE "WATERMARK" STYLE "E" OR APPROVED EQUIVALENT. EACH INDIVIDUAL NUMBER PLATE SHOULD BE A BLACK NUMERAL ON A 2"X3" WHITE PORCELAIN ENAMELED IRON PLATE. NUMBER PLATES SHALL BE "WATERMARK" STYLE "E" OR APPROVED EQUIVALENT. BOTH THE GAUGE PLATES AND NUMBER PLATES SHALL BE FASTENED DIRECTLY TO THE PIER WITH 1/4" DIAMETER, 1 1/2" LONG MASONRY SCREW WITH A HEX WASHER HEAD. THREE DIGIT ELEVATIONS TO BE INSTALLED AT THE TOP OF THE GAUGE AND AT EVERY ELEVATION ENDING WITH 0. AT ALL OF THE OTHER WHOLE ELAVATIONS, PLACE THE LAST DIGIT AS SHOWN IN THE EXAMPLE TO THE LEFT.

FILE NAME :	USER NAME : josephm	DESIGNED - JAM	REVISED -	STATE OF ILLINOIS DEPARTMENT OF TRANSPORTATION	IL 171 (FIRST AVE) OVER DES PLAINES RIVER SUBSTRUCTURE REPAIR PIER NO. 1	F.A.P. RTE. 372	SECTION 0606-BR	COUNTY COOK	TOTAL SHEETS 9	SHEET NO. 5			
Default	3-shr-plan.dgn	DRAWN - JAM	REVISED -			SCALE:	SHEET 1 OF 4 SHEETS	STA.	TO STA.	CONTRACT NO. 60W88			
	PLOT SCALE = 1/8"=1'-0"	CHECKED - TLC	REVISED -			ILLINOIS FED. AID PROJECT							
	PLOT DATE = 8/27/2013	DATE -	REVISED -										



SOUTH FACE



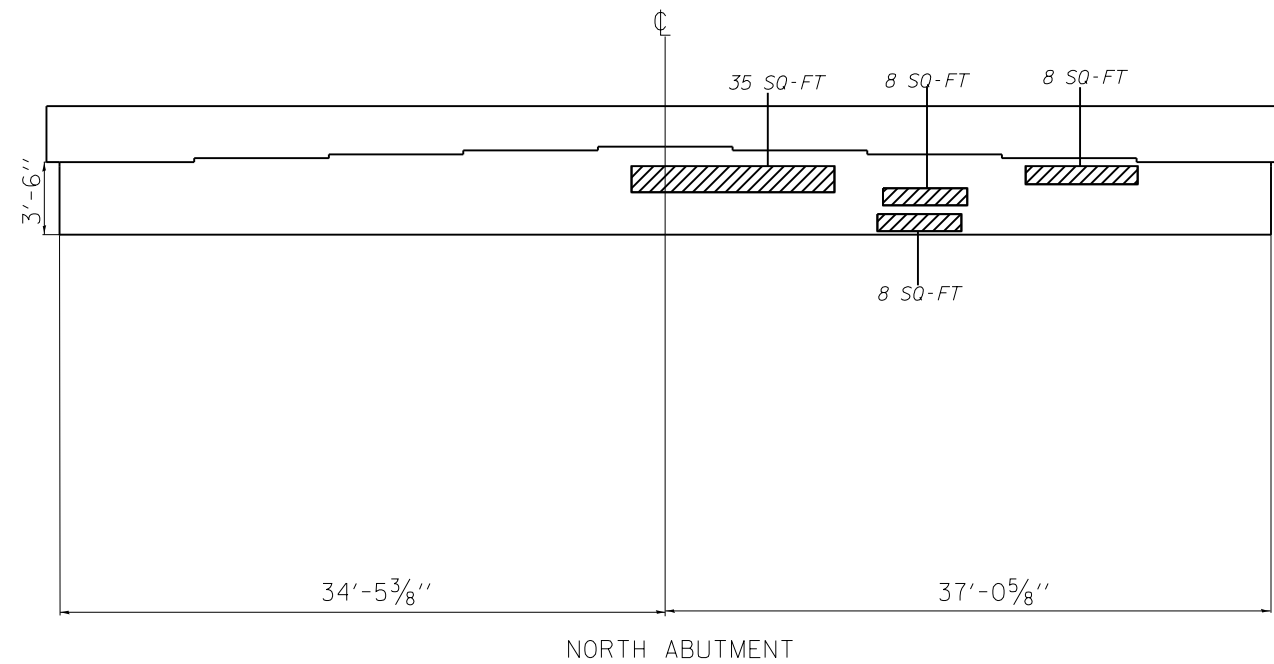
NORTH FACE

Pier No.2 BILL OF MATERIALS

ITEM	UNIT	QUANTITY
STRUCTURAL REPAIR OF CONCRETE ≤ 5"	SQ. FT	278
STRUCTURAL REPAIR OF CONCRETE > 5"	SQ. FT	24
TEMP. SHORING & CRIBBING	EACH	10

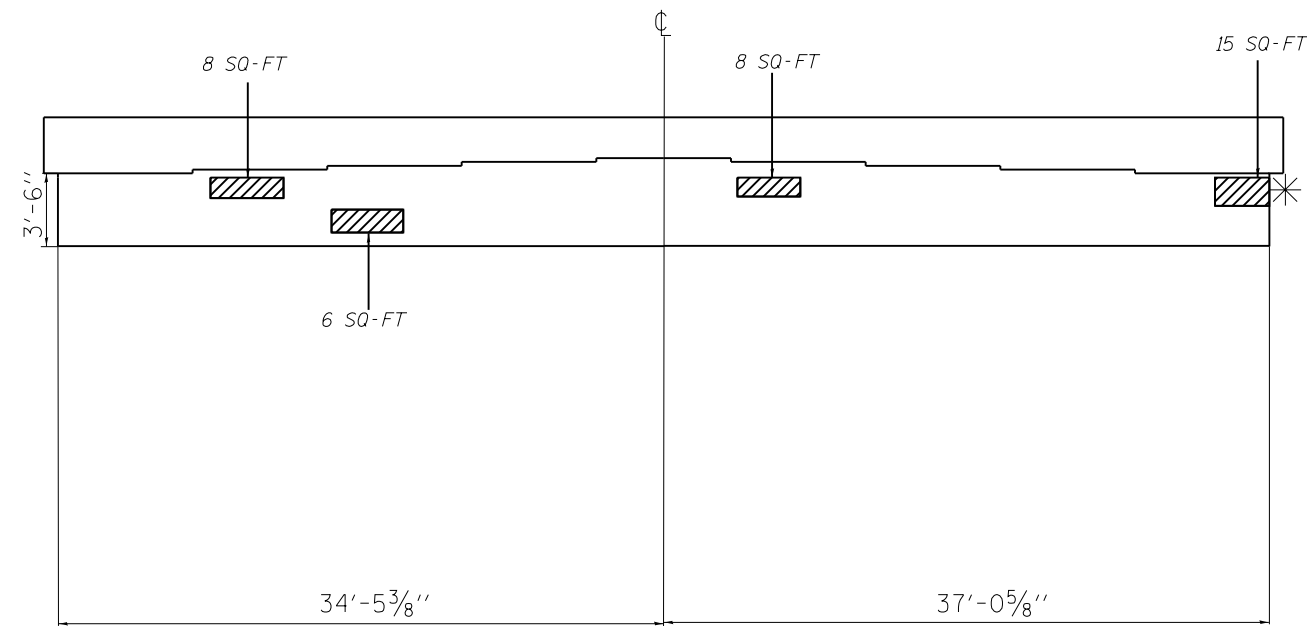
 STRUCTURAL REPAIR OF CONCRETE ≤ 5"

 STRUCTURAL REPAIR OF CONCRETE > 5"



NORTH ABUTMENT

*AROUND PIER NOSE



SOUTH ABUTMENT

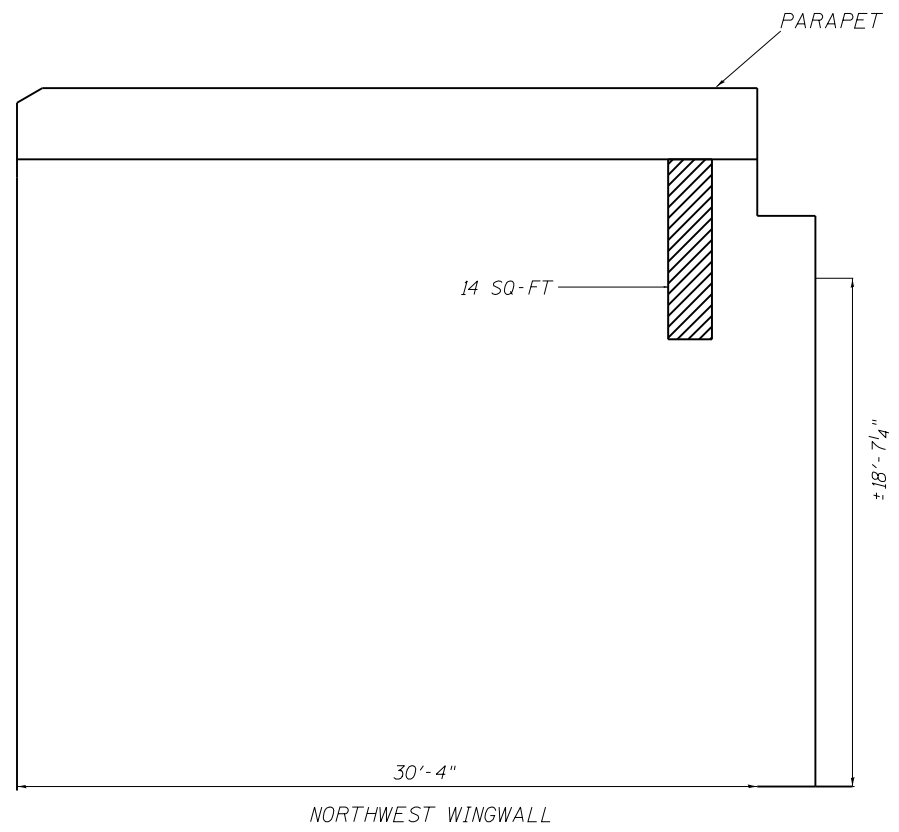
NORTH ABUTMENT BILL OF MATERIALS

ITEM	UNIT	QUANTITY
STRUCTURAL REPAIR OF CONCRETE ≤ 5"	SQ. FT	59

SOUTH ABUTMENT BILL OF MATERIALS

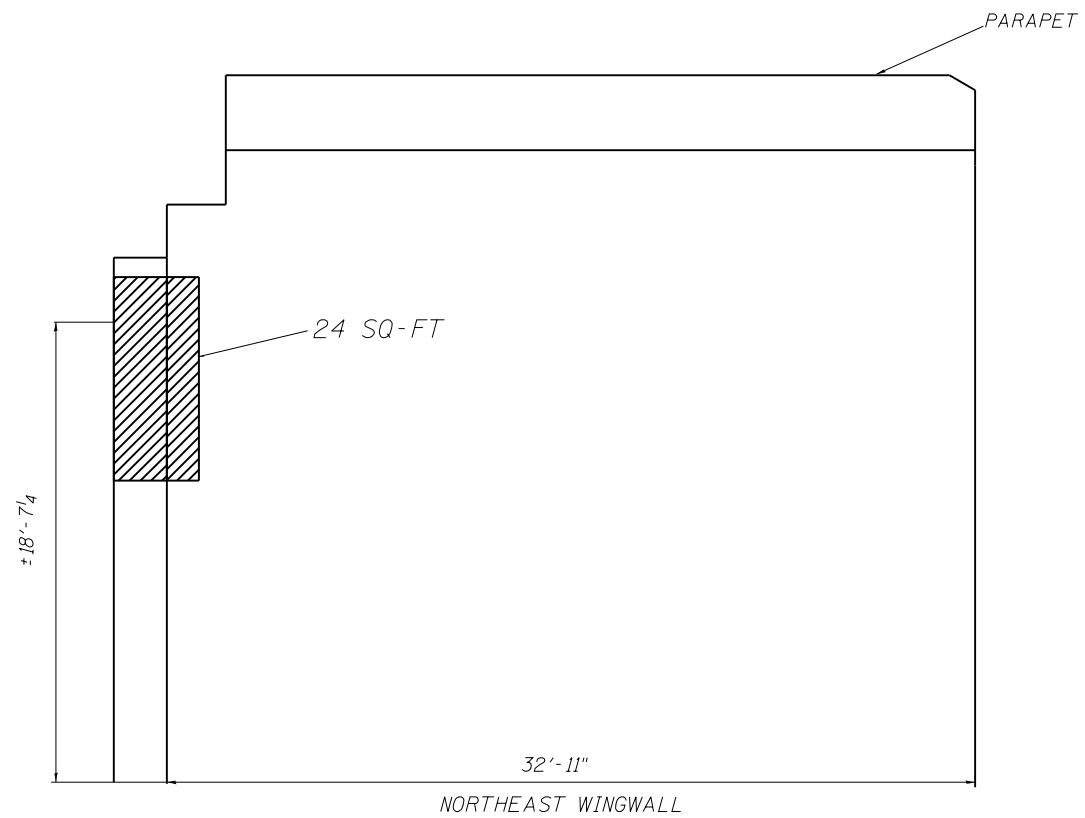
ITEM	UNIT	QUANTITY
STRUCTURAL REPAIR OF CONCRETE ≤ 5"	SQ. FT	37

 STRUCTURAL REPAIR OF CONCRETE ≤ 5"



**NORTHWEST WINGWALL
BILL OF MATERIALS**

ITEM	UNIT	QUANTITY
STRUCTURAL REPAIR OF CONCRETE ≤ 5"	SQ. FT	14



**NORTHEAST WINGWALL
BILL OF MATERIALS**

ITEM	UNIT	QUANTITY
STRUCTURAL REPAIR OF CONCRETE ≤ 5"	SQ. FT	24

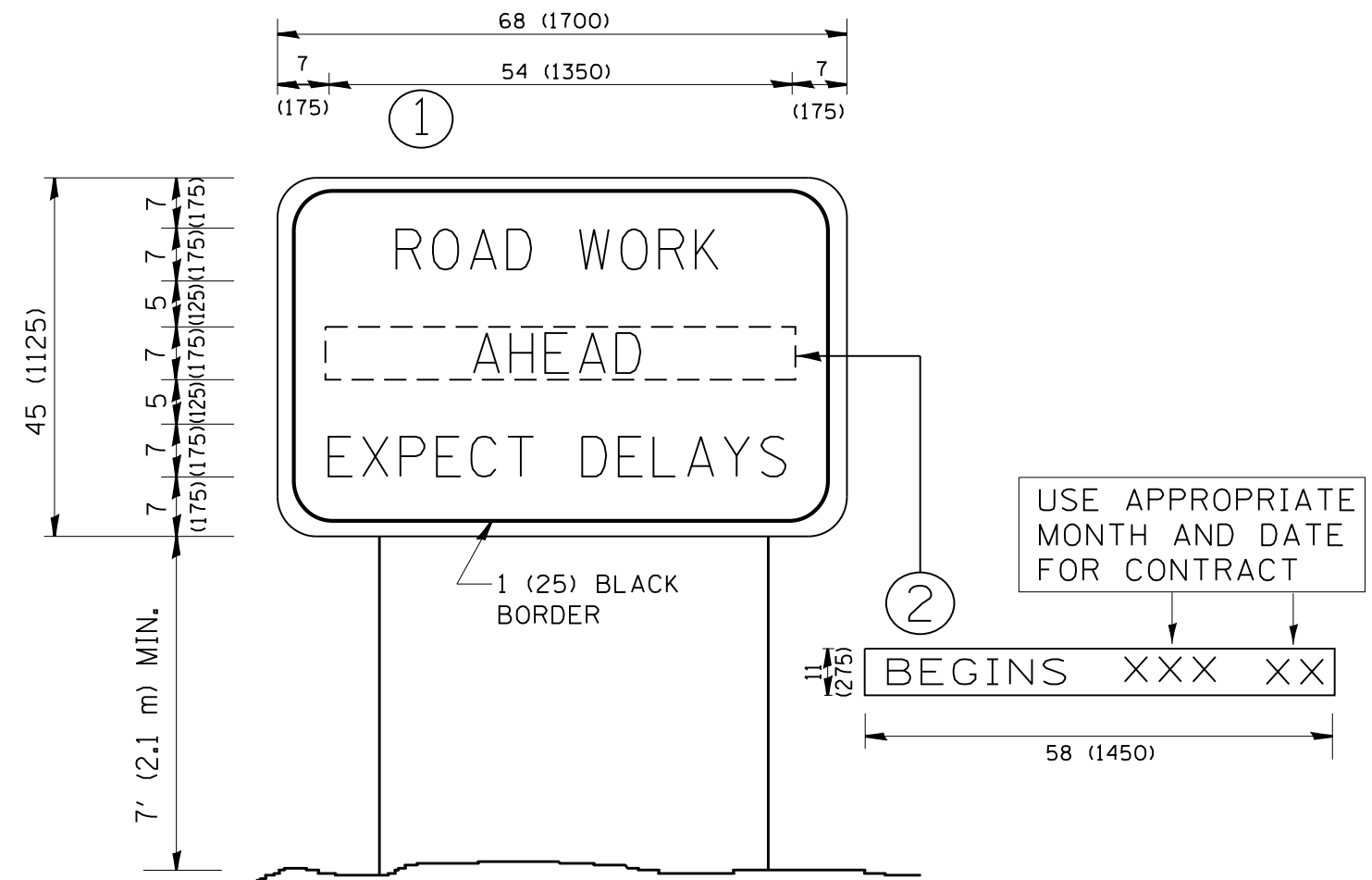
 STRUCTURAL REPAIR OF CONCRETE ≤ 5"

FILE NAME =	USER NAME = josephm	DESIGNED -	REVISED -
c:\pwork\work\pwork\josephm\d0349015\0139113-sht-plan.dgn		DRAWN -	REVISED -
Default	PLOT SCALE = 100.0000' / in.	CHECKED -	REVISED -
	PLOT DATE = 8/27/2013	DATE -	REVISED -

**STATE OF ILLINOIS
DEPARTMENT OF TRANSPORTATION**

IL 171 (FIRST AVE) OVER DES PLAINES RIVER			
SUBSTRUCTURE REPAIR			
NORTHWEST & NORTHEAST WINGWALLS			
SCALE:	SHEET	4 OF 4 SHEETS	STA. TO STA.

F.A.P. RTE.	SECTION	COUNTY	TOTAL SHEETS	SHEET NO.
372	0606-BR	COOK	9	8
ILLINOIS FED. AID PROJECT			CONTRACT NO. 60W88	



NOTES:

1. USE BLACK LETTERING ON ORANGE BACKGROUND.
2. ERECT SIGNS IN ADVANCE OF THE LOCATION FOR THE "ROAD CONSTRUCTION AHEAD" SIGN AT LOCATIONS AS DIRECTED BY THE ENGINEER.
3. ERECT SIGN ① WITH INSTALLED PANEL ② ONE WEEK PRIOR TO THE START OF CONSTRUCTION.
4. REMOVE PANEL ② SOON AFTER THE START OF CONSTRUCTION.
5. SEE SPECIAL PROVISION FOR "TEMPORARY INFORMATION SIGNING" FOR ADDITIONAL INFORMATION.
6. ONE SIGN ASSEMBLY EQUALS 25.70 SQ. FT. (2.3 SQ. M.)
7. SHALL BE PAID FOR AS TEMPORARY INFORMATION SIGNING.

ALL DIMENSIONS ARE IN INCHES (MILLIMETERS) UNLESS OTHERWISE SHOWN.

FILE NAME =	USER NAME = josephm	DESIGNED -	REVISED - R. MIRS 09-15-97
et:\pw\work\p1dot\josephm\d0349015\0139713-sht-plan.dgn		DRAWN -	REVISED - R. MIRS 12-11-97
	PLOT SCALE = 100.0000' / 1in.	CHECKED -	REVISED - T. RAMMACHER 02-02-99
	PLOT DATE = 8/27/2013	DATE -	REVISED - C. JUCIUS 01-31-07

**STATE OF ILLINOIS
DEPARTMENT OF TRANSPORTATION**

**ARTERIAL ROAD
INFORMATION SIGN**

SCALE: NONE SHEET NO. 1 OF 1 SHEETS STA. TO STA.

F.A.P. RTE.	SECTION	COUNTY	TOTAL SHEETS	SHEET NO.
372	0606-BR	COOK	9	9
TC-22		CONTRACT NO. 60W88		
FED. ROAD DIST. NO. 1 ILLINOIS FED. AID PROJECT				