

SUMMARY OF QUANTITIES

CODE NUMBER	PAY ITEM	UNIT	TOTAL QUANTITY	CONSTRUCTION TYPE CODE		
				ROADWAY 0004	SAFETY 0021	NON PARTICIPATING (100% VILLAGE) 0044
* 20100110	TREE REMOVAL (6 TO 15 UNITS DIAMETER)	UNIT	135	135		
* 20100210	TREE REMOVAL (OVER 15 UNITS DIAMETER)	UNIT	20	20		
* 20101100	TREE TRUNK PROTECTION	EACH	28	28		
* 20101200	TREE ROOT PRUNING	EACH	28	28		
* 20101300	TREE PRUNING (1 TO 10 INCH DIAMETER)	EACH	14	14		
* 20101350	TREE PRUNING (OVER 10 INCH DIAMETER)	EACH	14	14		
20200100	EARTH EXCAVATION	CU YD	5,474	5,474		
20201200	REMOVAL AND DISPOSAL OF UNSUITABLE MATERIAL	CU YD	3,663	3,663		
20800150	TRENCH BACKFILL	CU YD	15,826	15,826		
21001000	GEOTECHNICAL FABRIC FOR GROUND STABILIZATION	SQ YD	12,260	12,260		
* 21101615	TOPSOIL FURNISH AND PLACE, 4"	SQ YD	6,249	6,249		
* 25000200	SEEDING, CLASS 2	ACRE	0.26	0.26		
* 25000310	SEEDING, CLASS 4	ACRE	0.13	0.13		
* 25000314	SEEDING, CLASS 4B	ACRE	0.37	0.37		
* 25000322	SEEDING, CLASS 5A	ACRE	0.13	0.13		
* 25000400	NITROGEN FERTILIZER NUTRIENT	POUND	89	89		
* 25000600	POTASSIUM FERTILIZER NUTRIENT	POUND	89	89		
25100630	EROSION CONTROL BLANKET	SQ YD	3,524	3,524		
25100900	TURF REINFORCEMENT MAT	SQ YD	415	415		
* 25200110	SODDING, SALT TOLERANT	SQ YD	5,046	5,046		
* 25200200	SUPPLEMENTAL WATERING	UNIT	100	100		
28000250	TEMPORARY EROSION CONTROL SEEDING	POUND	354	354		
28000400	PERIMETER EROSION BARRIER	FOOT	2,522	2,522		
28000510	INLET FILTERS	EACH	54	54		
28001100	TEMPORARY EROSION CONTROL BLANKET	SQ YD	19,540	19,540		
30300001	AGGREGATE SUBGRADE IMPROVEMENT	CU YD	1,482	1,482		
30300112	AGGREGATE SUBGRADE IMPROVEMENT 12"	SQ YD	12,311	12,311		
35101400	AGGREGATE BASE COURSE, TYPE B	TON	320	320		
35101600	AGGREGATE BASE COURSE, TYPE B 4"	SQ YD	4,048	4,048		
35501288	HOT-MIX ASPHALT BASE COURSE, 2 1/2"	SQ YD	4,030	4,030		

* INDICATES SPECIALTY ITEM

COPYRIGHT © 2013 BY BAXTER & WOODMAN, INC.
 STATE OF ILLINOIS - PROFESSIONAL DESIGN FIRM
 LICENSE NO. 184-00021 - EXPIRES 07/31/2015
 07/27/2013 10:51:01 AM
 \\s01p01\work\071749\CAD\SURVEY\DRAWINGS\0005\PHASE-2\071749_PAG_51_S00.sht



DESIGNED - DSH	REVISED - 10-25-13 ADDENDUM #1
DRAWN - MAC	REVISED -
CHECKED - RWL	REVISED -
DATE - 06/20/13	FILE - 071749_Ph2_SH_S00.sht

**STATE OF ILLINOIS
DEPARTMENT OF TRANSPORTATION**

SUMMARY OF QUANTITIES

SCALE: _____ STA. _____ TO STA. _____

F.A.U. RTE.	SECTION	COUNTY	TOTAL SHEETS	SHEET NO.
0201	00-00025-00-FP	LAKE	98	4
C-91-070-10		CONTRACT NO. 63868		
FED. ROAD DIST. NO. 1 [ILLINOIS] FED. AID PROJECT M-9003(482)				

SUMMARY OF QUANTITIES

CODE NUMBER	PAY ITEM	UNIT	TOTAL QUANTITY	CONSTRUCTION TYPE CODE		
				ROADWAY 0004	SAFETY 0021	NON PARTICIPATING (100% VILLAGE) 0044
X0325366	STORM SEWER REPAIR	FOOT	65	65		
X0326950	INSTALL EXISTING ELECTRIC CABLE	FOOT	624		624	
X0327566	ROADSIDE DETECTOR	EACH	1		1	
X2130010	EXPLORATION TRENCH, SPECIAL	FOOT	500	500		
X4021000	TEMPORARY ACCESS (PRIVATE ENTRANCE)	EACH	3	3		
X4022000	TEMPORARY ACCESS (COMMERCIAL ENTRANCE)	EACH	33	33		
X4023000	TEMPORARY ACCESS (ROAD)	EACH	10	10		
X5120005	DRIVING PILES (SPECIAL)	FOOT	800	800		
X5610680	WATER MAIN PROTECTION	FOOT	80	80		
X6022120	MANHOLES, DROP TYPE, 7' DIAMETER, TYPE 1 FRAME, CLOSED LID	EACH	1	1		
X6023102	MANHOLES, TYPE A, 5'-DIAMETER, TYPE 1 FRAME, CLOSED LID, SPECIAL	EACH	1	1		
X6026050	SANITARY MANHOLES TO BE ADJUSTED	EACH	8	8		
X6640306	CHAIN LINK FENCE TO BE RELOCATED	FOOT	180	180		
X7010216	TRAFFIC CONTROL AND PROTECTION, (SPECIAL)	L SUM	1	1		
X8570226	FULL-ACTUATED CONTROLLER AND TYPE IV CABINET, SPECIAL	EACH	1		1	
X8620200	UNINTERRUPTABLE POWER SUPPLY, SPECIAL	EACH	1		1	
X8730571	ELECTRIC CABLE IN CONDUIT, COAXIAL	FOOT	105		105	
X8730800	ELECTRIC CABLE IN CONDUIT, VIDEO, NO. 20 4 C	FOOT	105		105	
X8770139	STEEL COMBINATION MAST ARM ASSEMBLY AND POLE 44 FT. (SPECIAL)	EACH	1		1	
XX003643	BASE REPAIR, SPECIAL	SQ YD	581	581		
XX005928	TRAFFIC SIGNAL POST, 10 FOOT, (SPECIAL)	EACH	2		2	
XX005931	TRAFFIC SIGNAL POST, 16 FOOT, (SPECIAL)	EACH	1		1	
XX005937	LED INTERNALLY ILLUMINATED STREET NAME SIGN	EACH	3		3	
XX005940	REMOTE CONTROLLED VIDEO SYSTEM	EACH	1		1	
XX008253	VIDEO ENCODER	EACH	1		1	
XX008392	OUTDOOR RATED NETWORK CABLE	FOOT	53		53	
XX008536	PREPARATION OF BASE (SPECIAL)	SQ YD	5,810	5,810		
XX008904	STORM SEWERS, PILE SUPPORTED	FOOT	71	71		
XX008905	PRECAST REINFORCED CONCRETE FLARED END SECTIONS, PILE SUPPORTED	EACH	1		1	
XX008906	STEEL COMBINATION MAST ARM ASSEMBLY AND POLE WITH DUAL MAST ARMS, 22 FT. AND 34 FT. (SPECIAL)	EACH	1		1	

* INDICATES SPECIALTY ITEM

COPYRIGHT © 2013 BY BAYTER & WOODMAN, INC. \\pilot\c\A\ref-BM-Defoul.rpt
 STATE OF ILLINOIS - PROFESSIONAL DESIGN FIRM
 LICENSE NO. 08-00001 - EXPIRES 7/30/2015
 07/20/2013 10:25:17 AM I:\C:\Pilot\Code\BAYTER\DRAWINGS\UGDS\PHASE-2\071749_PH2_SH_S00.sht



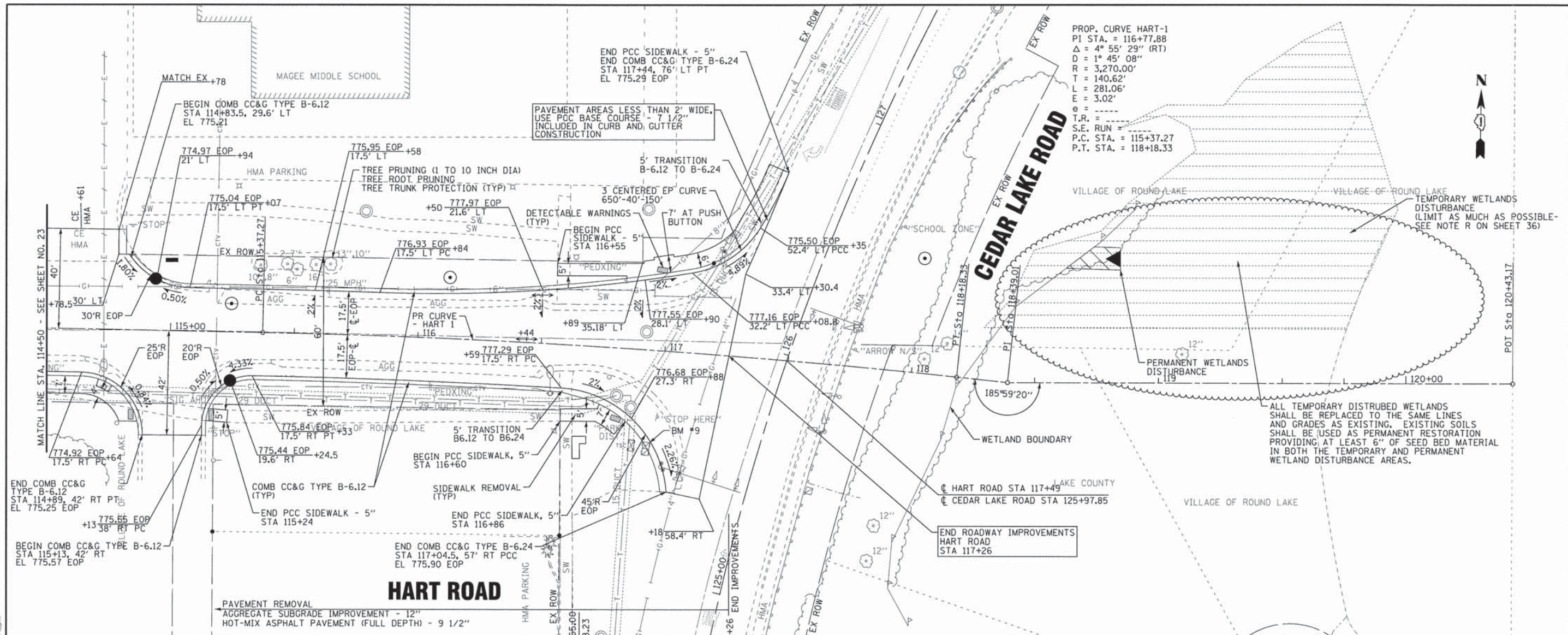
DESIGNED - DSH	REVISED - 10-25-13 ADDENDUM #1
DRAWN - MAC	REVISED -
CHECKED - RWL	REVISED -
DATE - 06/20/13	FILE - 071749_PH2_SH_S00.sht

**STATE OF ILLINOIS
DEPARTMENT OF TRANSPORTATION**

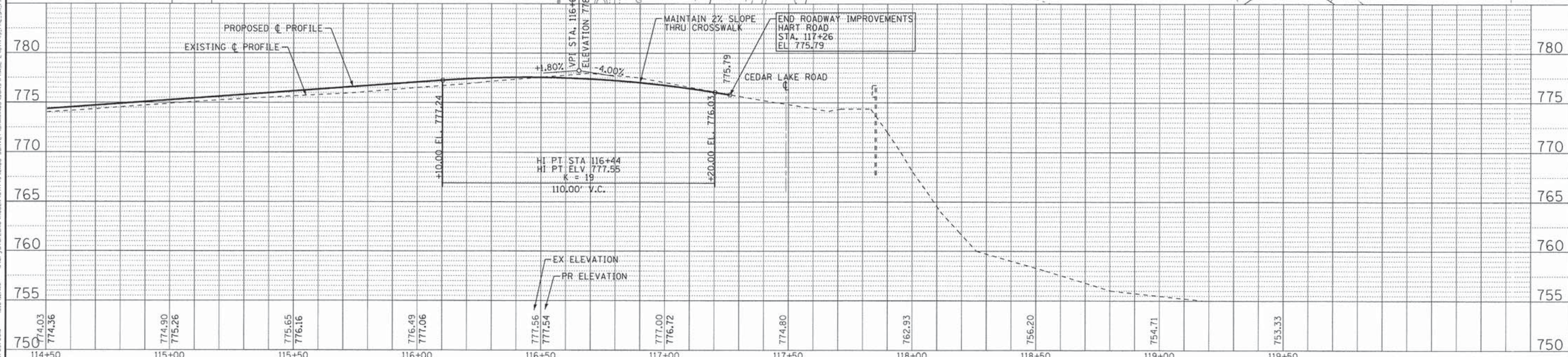
SUMMARY OF QUANTITIES

SCALE: STA. TO STA.

F.A.U. R.T.E.	SECTION	COUNTY	TOTAL SHEETS	SHEET NO.
0201	00-00025-00-FP	LAKE	98	10
C-91-070-10		CONTRACT NO. 63868		
FED. ROAD DIST. NO. 1 [ILLINOIS]		FED. AID PROJECT M-900314821		

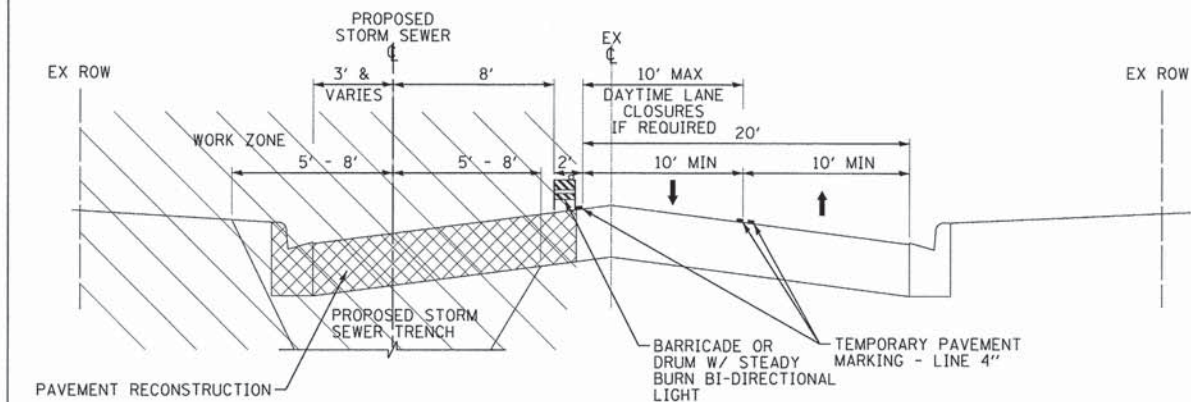


PROP. CURVE HART-1
 PI STA. = 116+77.88
 $\Delta = 4^\circ 55' 29''$ (RT)
 $D = 1^\circ 45' 08''$
 $R = 3,270.00'$
 $T = 140.62'$
 $L = 281.06'$
 $E = 3.02'$
 $e = \dots$
 T.R. = \dots
 S.E. RUN = \dots
 P.C. STA. = 115+37.27
 P.T. STA. = 118+18.33



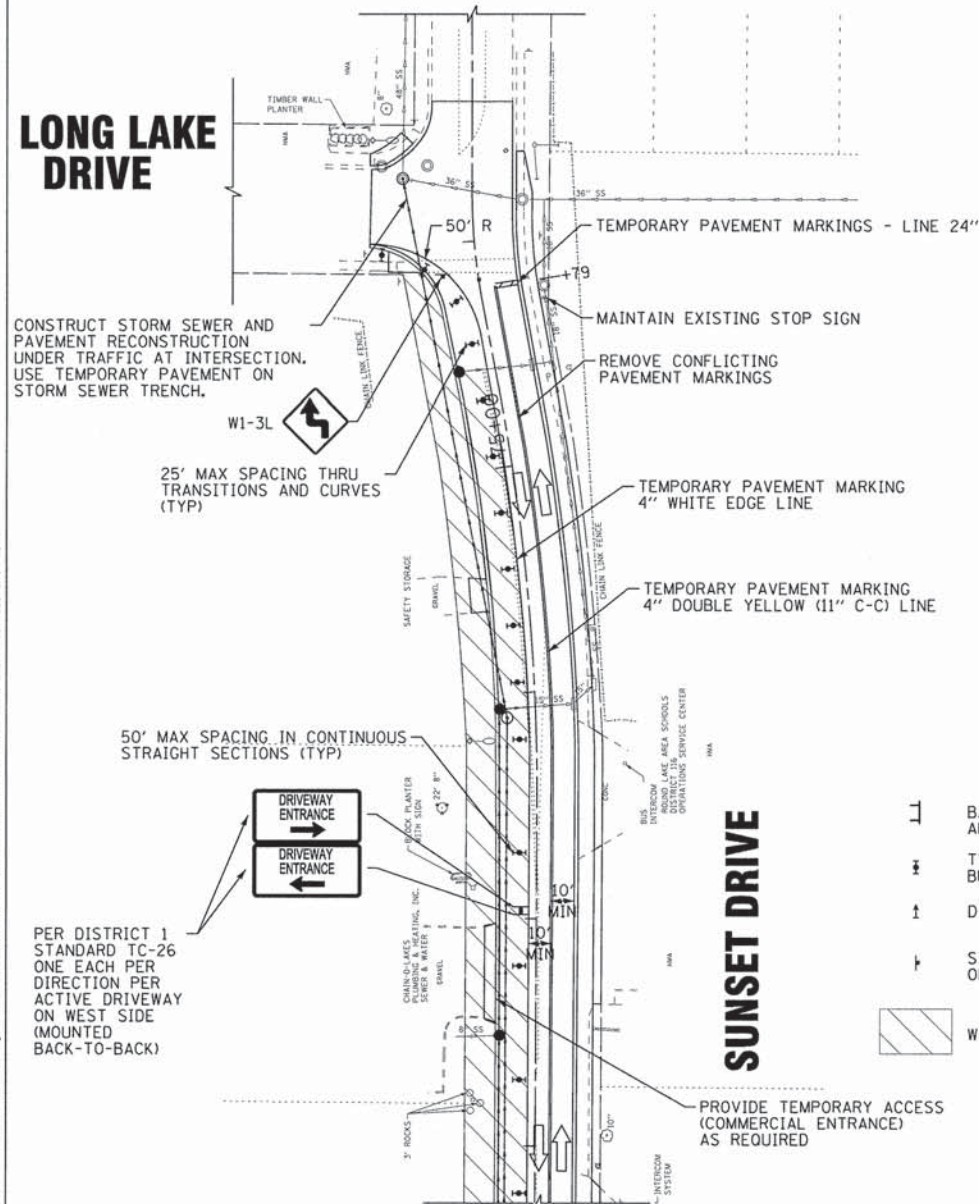
DESIGNED - DSH DRAWN - CJC CHECKED - RWL DATE - 06/20/13	REVISED - 10-25-13 ADDENDUM #1 REVISED - REVISED - FILE - 071749_PH2_SH_PP4.sht	STATE OF ILLINOIS DEPARTMENT OF TRANSPORTATION	PLAN & PROFILE HART ROAD	F.A.U. SECTION COUNTY TOTAL SHEETS SHEET NO. 0201 00-00025-00-FP LAKE 98 24 C-91-070-10 CONTRACT NO. 63868 FED. ROAD DIST. NO. 1 ILLINOIS FED. AID PROJECT M-9003482
---	--	---	---	---

COPYRIGHT © 2013 BY BAXTER & WOODMAN, INC.
 STATE OF ILLINOIS - PROFESSIONAL DESIGN FIRM
 LICENSE NO. 184-0021 - EXPIRES 4/30/2015
 10/25/2013 10:42:27 AM



**SUNSET DRIVE
STAGE 1
TYPICAL SECTION**

LONG LAKE DRIVE



CONSTRUCT STORM SEWER AND PAVEMENT RECONSTRUCTION UNDER TRAFFIC AT INTERSECTION. USE TEMPORARY PAVEMENT ON STORM SEWER TRENCH.

25' MAX SPACING THRU TRANSITIONS AND CURVES (TYP)

50' MAX SPACING IN CONTINUOUS STRAIGHT SECTIONS (TYP)

PER DISTRICT 1 STANDARD TC-26 ONE EACH PER DIRECTION PER ACTIVE DRIVEWAY ON WEST SIDE (MOUNTED BACK-TO-BACK)

LEGEND

- BARRICADE, TYPE III WITH 2 FLASHING LIGHTS AND SIGNS AS NOTED.
- TYPE II BARRICADE OR DRUM WITH STEADY BURNING BI-DIRECTIONAL LIGHT
- ↑ DIRECTION INDICATOR BARRICADE
- SIGN MOUNTED ABOVE BARRICADE OR ON PORTABLE SUPPORT
- ▨ WORK AREA

SUNSET DRIVE AT LONG LAKE DRIVE STAGE 1

DESIGNED - DSH	REVISED - 8-13-13 PER VILLAGE
DRAWN - MAC	REVISED - 8-29-13 PER IDOT
CHECKED - RWL	REVISED - 10-25-13 ADDENDUM #1
DATE - 06/20/13	FILE - 071749.PH2.SH.MOT4.sht

STATE OF ILLINOIS
DEPARTMENT OF TRANSPORTATION

SUGGESTED SEQUENCE OF CONSTRUCTION

STAGE 1 - SHIFT TWO-WAY TRAFFIC TO EAST SIDE OF SUNSET AND CONSTRUCT STORM SEWER AND RECONSTRUCTION AND CONSTRUCT RESURFACING PORTION UNDER TRAFFIC.

- CLOSE WEST PORTION OF SUNSET DRIVE AND SHIFT TWO-WAY TRAFFIC TO EAST PORTION OF ROAD, MAINTAINING 10 FOOT MINIMUM LANE WIDTHS FOR EACH DIRECTION AND ALLOWING CROSS ACCESS TO PROPERTIES ON THE WEST SIDE AT ALL TIMES.
- INSTALL STORM SEWER ON SUNSET DRIVE WITH DAYTIME ONLY LANE CLOSURES.
- COMPLETE RECONSTRUCTION THRU HMA BASE COURSE ON WEST SIDE OF SUNSET DRIVE.
- REMOVE WEST SIDE CLOSURE AND CONSTRUCT EAST-SIDE CURB AND GUTTER, REMOVE REMAINING EXISTING ASPHALT, PREPARE AGGREGATE BASE, AND COMPLETE BINDER COURSE ON SUNSET DRIVE UNDER TRAFFIC.
- INSTALL TEMPORARY PAVEMENT MARKING AS REQUIRED AND SET UP TRAFFIC SHIFT REQUIRED FOR STAGE 2.

STAGE 2 CLOSE HART ROAD FROM SUNSET DRIVE TO CEDAR LAKE ROAD.

- ESTABLISH STAGE 2 DETOUR PRIOR TO STAGE 2 CLOSURE.
- CLOSE HART ROAD FROM SUNSET DRIVE TO CEDAR LAKE ROAD.
- INSTALL STORM SEWER ON HART ROAD EAST OF SUNSET, MAINTAINING ACCESS TO MAGEE MIDDLE SCHOOL DURING THE SCHOOL YEAR.
- INSTALL TEMPORARY TRAFFIC SIGNAL AT CEDAR LAKE ROAD AND REMOVE EXISTING TRAFFIC SIGNAL EQUIPMENT.
- COMPLETE RECONSTRUCTION THRU BINDER COURSE ON HART ROAD EAST OF SUNSET AND INSTALL ALL PROPOSED UNDERGROUND TRAFFIC SIGNAL EQUIPMENT.
- INSTALL TEMPORARY HMA RAMPS AS REQUIRED TO REOPEN TO TRAFFIC.
- INSTALL TEMPORARY PAVEMENT MARKINGS AS REQUIRED TO REOPEN TO TRAFFIC AND MAKE APPROPRIATE ADJUSTMENTS TO TEMPORARY TRAFFIC SIGNAL DETECTION ZONES.

STAGE 3 CLOSE HART ROAD FROM IL ROUTE 134 TO SUNSET DRIVE.

- REOPEN HART ROAD FROM SUNSET DRIVE TO CEDAR LAKE ROAD TO LOCAL TRAFFIC AND SUNSET TRAFFIC ONLY.
- ESTABLISH STAGE 3 DETOUR PRIOR TO STAGE 3 CLOSURE.
- SHIFT TRAFFIC ON SUNSET DRIVE AS REQUIRED FOR STAGE 3 AND CLOSE HART ROAD FROM IL ROUTE 134 TO SUNSET DRIVE.
- INSTALL STORM SEWER ON HART ROAD WEST OF SUNSET, MAINTAINING ACCESS TO CAROL LANE.
- COMPLETE RECONSTRUCTION THRU BINDER COURSE ON HART ROAD WEST OF SUNSET.
- INSTALL TEMPORARY PAVEMENT MARKINGS AS REQUIRED TO REOPEN TO TRAFFIC.
- REOPEN HART ROAD TO TWO-WAY TRAFFIC AND REMOVE HART ROAD DETOUR.

STAGE 4 CONSTRUCT REMAINING WORK UNDER TRAFFIC

- COMPLETE REMAINING DRIVEWAYS AND SIDEWALK AND BEGIN REMAINING RESTORATION ON HART ROAD AND SUNSET DRIVE.
- CONSTRUCT HMA SURFACE COURSE ON HART ROAD AND SUNSET DRIVE.
- COMPLETE PERMANENT PAVEMENT MARKINGS AND SIGNS BY THE STAGE 4 COMPLETION DATE.
- COMPLETE TRAFFIC SIGNAL INSTALLATION.
- REMOVE TEMPORARY TRAFFIC SIGNAL AND TEMPORARY EROSION CONTROL MEASURES NO LONGER NEEDED.
- COMPLETE ALL REMAINING RESTORATION, LANDSCAPING, AND PUNCH LIST ITEMS WITHIN THE ALLOTTED NUMBER OF WORKING DAYS.

MAINTENANCE OF TRAFFIC NOTES

- THE CONTRACTOR SHALL SUBMIT A PRE-PLANNED SEQUENCE OF WORK AT THE PRECONSTRUCTION MEETING FOR REVIEW AND APPROVAL. WORK SHALL BE SCHEDULED TO MINIMIZE INCONVENIENCE TO LOCAL TRAFFIC AND MAINTAIN A REASONABLE LEVEL OF CONSTRUCTION EFFICIENCY. THE ENGINEER RESERVES THE RIGHT TO RESTRICT WORK ON ANY AREA IF TRAFFIC CONTROL OPERATIONS BECOME UNACCEPTABLE.
- SEE SPECIAL PROVISIONS FOR REQUIRED COMPLETION DATES FOR EACH STAGE. THE CONTRACTOR MAY PROVIDE THE ENGINEER WITH ALTERNATIVE CONSTRUCTION SEQUENCE FOR APPROVAL AS LONG AS IT MEETS THESE CRITERIA: SUNSET DRIVE IS FULLY OPEN TO TRAFFIC BEFORE HART ROAD IS CLOSED, LOCAL ACCESS IS PROVIDED TO BUSINESSES ON SUNSET AND RESIDENTS ON CAROL LANE, AND HART ROAD EAST OF SUNSET IS CONSTRUCTED WHEN SCHOOL IS NOT IN SESSION.
- PRELIMINARY WORK ON OTHER STAGES CAN BE COMPLETED UNDER TRAFFIC UTILIZING APPROPRIATE HIGHWAY STANDARDS WITH THE APPROVAL OF THE ENGINEER.
- ALL TRAFFIC CONTROL AND TEMPORARY EROSION CONTROL MEASURES MUST BE IN PLACE PRIOR TO COMPLETING ANY WORK ON A STAGE.
- ACCESS FOR EMERGENCY VEHICLES, LOCAL TRAFFIC, GARBAGE COLLECTION, SCHOOL BUSES, AND MAIL SERVICE SHALL BE MAINTAINED AT ALL TIMES. ANY SIGNIFICANT CHANGE IN TRAFFIC CONTROL SHALL HAVE PRIOR APPROVAL BY THE ENGINEER. THE CONTRACTOR SHALL PROVIDE A MINIMUM OF THREE DAYS NOTICE IN ADVANCE OF CONSTRUCTION ACTIVITIES WHICH IMPACT EMERGENCY SERVICES.

MAINTENANCE OF TRAFFIC NOTES (CONT'D)

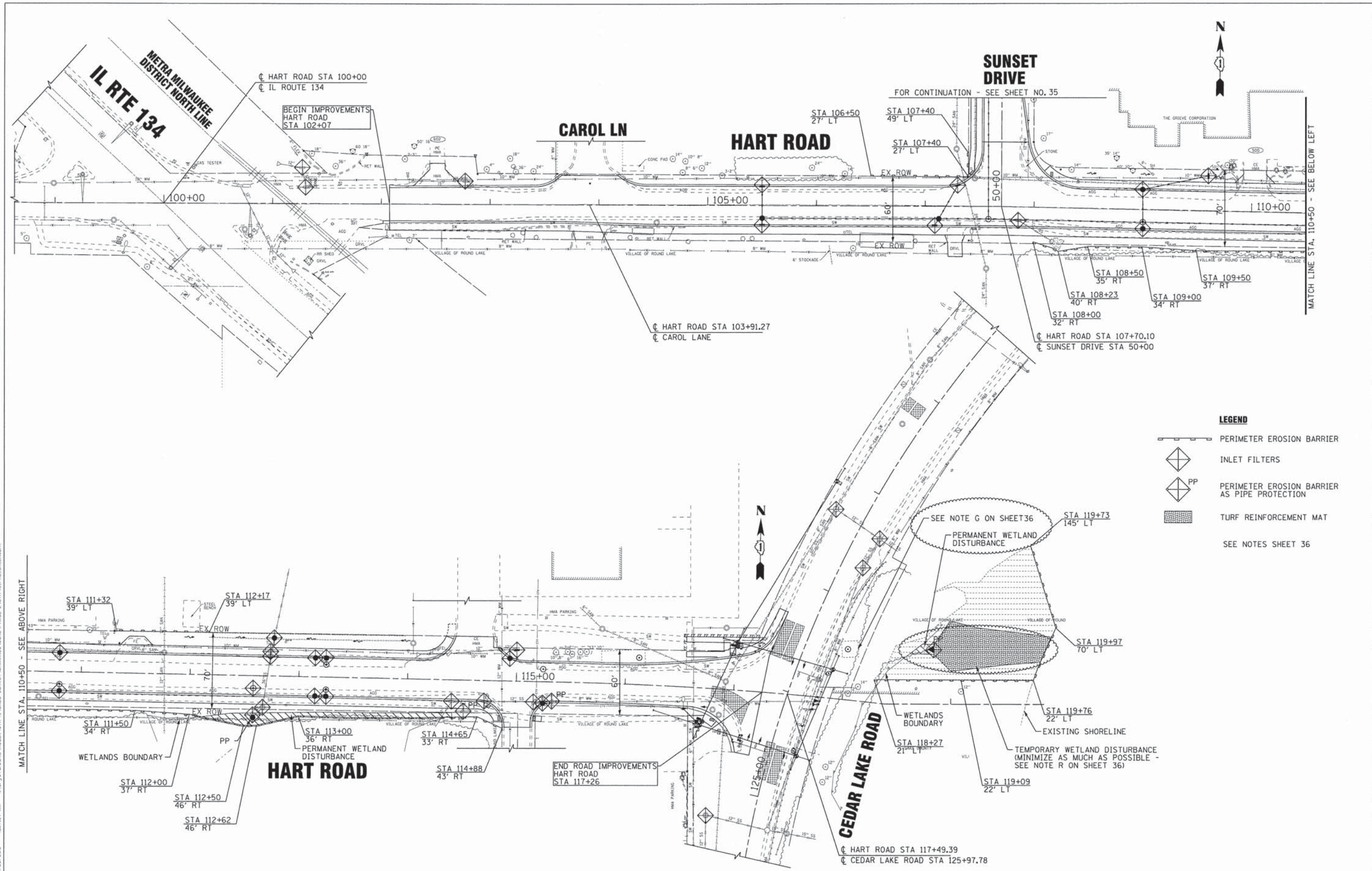
- DURING THE SCHOOL YEAR, ROUGHLY FROM THE END OF AUGUST TO THE END OF MAY (COORDINATE WITH THE SCHOOL DISTRICT FOR EXACT DATES), ACCESS TO THE ROUND LAKE AREA HIGH SCHOOL, DISTRICT OPERATIONS CENTER, AND MAGEE MIDDLE SCHOOL SHALL BE PROVIDED AT ALL TIMES.
- DURING THE SCHOOL YEAR, NO DAILY LANE CLOSURES WILL BE ALLOWED ON HART ROAD BETWEEN CEDAR LAKE ROAD AND THE MAGEE MIDDLE SCHOOL ENTRANCE DURING DROP-OFF AND PICK-UP TIMES, 7AM TO 8AM AND 2PM TO 3PM.
- THE PAVEMENT RECONSTRUCTION OF HART ROAD (THRU BINDER) BETWEEN CEDAR LAKE ROAD AND THE MAGEE MIDDLE SCHOOL ENTRANCE SHALL BE COMPLETED WHEN SCHOOL IS NOT IN SESSION END OF MAY TO THE END OF AUGUST. AS AN OPTION, STAGE 2 MAY BE SPLIT INTO TWO SUB-STAGES TO ACCOMPLISH THIS.
- THE PROJECTED CONSTRUCTION SCHEDULE FOR THE BEGINNING OF THE 2014/2015 SCHOOL YEAR SHALL BE PROVIDED TO THE ENGINEER BY JULY 1, 2014 TO FORWARD TO THE SCHOOL DISTRICT FOR BUS ROUTE PLANNING.
- ALL BARRICADES SHALL BE EQUIPPED WITH STEADY BURN BI-DIRECTIONAL LIGHTS. SPACING SHALL BE AT 50 FOOT INTERVALS ALONG WORK AREAS AND 25 FEET WHERE DIRECTION CHANGES AND TAPERS OCCUR. 25' MAXIMUM BARRICADE SPACING SHALL BE PROVIDED ADJACENT TO ACTIVE WORK AREAS WHERE DROP-OFFS EXCEED 3-INCHES OR AS DETERMINED BY THE ENGINEER.
- DAILY LANE CLOSURES SHALL BE IN ACCORDANCE WITH THE APPLICABLE HIGHWAY STANDARDS. 10-FOOT MINIMUM LANE WIDTHS ARE REQUIRED ON ALL OPEN LANES.
- THE CONTRACTOR SHALL COORDINATE COMMERCIAL DRIVEWAY CLOSURES/ MODIFICATIONS WITH THE LOCAL BUSINESSES AND THE ENGINEER. COMMERCIAL DRIVEWAYS WHICH CANNOT BE CLOSED, AS DETERMINED BY THE ENGINEER, SHALL BE CONSTRUCTED IN STAGES OR SHALL BE CONSTRUCTED WHEN BUSINESSES ARE NOT OPEN USING HIGH EARLY STRENGTH CONCRETE. THIS WORK SHALL BE INCLUDED IN THE CONTRACT.
- DURING STORM SEWER INSTALLATION AND RECONSTRUCTION ON THE WEST SIDE OF SUNSET DRIVE, A MANEUVERING AREA SHALL BE PROVIDED ON THE WEST SIDE OF SUNSET DRIVE ACROSS FROM COMMERCIAL DRIVEWAYS ON THE EAST SIDE WHICH REQUIRE BACKING OF TRUCKS ONTO THE PROPERTY. EXTRA QUANTITY OF EACH TEMPORARY ACCESS (COMMERCIAL ENTRANCE) HAS BEEN PROVIDED TO ACCOUNT FOR THESE LOCATIONS AND WILL BE PAID FOR AS SUCH.
- ROAD EXCAVATION SHALL BE LIMITED TO THE LENGTH OF ROADWAY THAT CAN BE COVERED BY AGGREGATE AND RE-ESTABLISH TEMPORARY ACCESS IN ONE DAY.
- DAILY LANE CLOSURES AND TEMPORARY AND PERMANENT TRAFFIC SIGNAL INSTALLATION ON CEDAR LAKE ROAD SHALL BE COORDINATED WITH THE LAKE COUNTY DIVISION OF TRANSPORTATION (LCDOT).
- WITHIN 48 HOURS, TEMPORARY PAVEMENT SHALL BE PLACED IN ALL LOCATIONS WHERE THE PAVEMENT HAS BEEN OPENED UP, BUT NOT PART OF THE FULL-TIME CLOSURE, OR AS DIRECTED BY THE ENGINEER.
- ALL STREET SECTIONS NOT INCLUDED IN THE FULL-TIME CLOSURE SHALL BE OPEN TO TWO WAY TRAFFIC AT THE END OF EACH DAY USING TEMPORARY ACCESS AGGREGATE, TEMPORARY RAMPS OR TEMPORARY PAVEMENT AS NEEDED.
- ALL OPEN TRENCHES IN AREAS CLOSED TO ALL TRAFFIC BUT ADJACENT TO OPEN LANES SHALL BE FILLED TO NO MORE THAN 18 INCHES BELOW THE EXISTING SURFACE AT THE END OF EACH DAY. OVERNIGHT DROP OFFS EXCEEDING 3 INCHES SHALL REQUIRE 25' MAX. BARRICADE SPACING. AT THE OPTION OF THE CONTRACTOR, AND ONLY IN THE IMMEDIATE AREA WHERE STORM SEWER INSTALLATION IS IN PROGRESS AS DETERMINED BY THE ENGINEER, THE TRENCH MAY BE LEFT OPEN OVERNIGHT PROVIDED THE CONTRACTOR INSTALLS TEMPORARY CONCRETE BARRIER NEXT TO OPEN LANES IN ACCORDANCE WITH IDOT BUREAU OF SAFETY ENGINEERING MEMORANDUM SAFETY 4-08 EFFECTIVE AUGUST 27, 2010 AND SECTIONS 55-4.02 (b), 55-4.02(c), AND 55-4.03 OF THE BDE MANUAL AND SURROUNDS THE OPEN TRENCH WITH SAFETY FENCE AT THE END OF THE DAY AT NO ADDITIONAL COST TO THE CONTRACT. TEMPORARY BARRIER SHALL NOT BLOCK OPEN DRIVEWAYS.
- ALL OPEN TRENCHES IN AREAS TO BE OPEN TO TRAFFIC AT THE END OF THE DAY, INCLUDING ACCESS TO DRIVEWAYS, SHALL BE FILLED AND COMPACTED TO THE TOP OF THE EXISTING SURFACE ELEVATION BY THE END OF EACH DAY.
- DAY TIME ONLY LANE CLOSURES WITH FLAGGERS WILL BE ALLOWED IF NEEDED ON SUNSET DRIVE DURING STAGE 1, PROVIDED A 10 FOOT MINIMUM WIDTH ON THE OPEN LANE IS MAINTAINED.
- CONSTRUCTION OF THE PILE-SUPPORTED STORM SEWER EAST OF CEDAR LAKE ROAD MAY BE CONSTRUCTED ANY TIME DURING STAGES 1 OR 2 AS LONG AS TRAFFIC CONTROL, SEDIMENT CONTROL, AND CONTROL OF CONSTRUCTION DEBRIS ARE ACCEPTABLE TO THE ENGINEER.
- CONSTRUCTION OF THE JACKING PIT IN FRONT OF MAGEE MIDDLE SCHOOL SHALL BE COMPLETED WHEN SCHOOL IS NOT IN SESSION TO AVOID DISRUPTION TO SCHOOL TRAFFIC AND FOR SAFETY OF SCHOOL CHILDREN. FOR THE DURATION OF JACKING PIT USE, BARRICADES SPACED AT 25 FOOT SHALL BE PLACED AT LEAST 8 FEET AWAY FROM THE PIT ADJACENT TO OPEN TRAFFIC LANES AND TEMPORARY CONSTRUCTION FENCE SHALL BE INSTALLED AROUND THE PERIMETER OF PIT AT THE END OF EACH DAY. THIS WILL WORK WILL BE INCLUDED IN THE COST OF STORM SEWERS JACKED IN PLACE.
- "ROAD CONSTRUCTION AHEAD" SIGNS, WITH APPROPRIATE ARROW IF REQUIRED, SHALL BE PLACED ON ALL APPROACHES AND SIDE STREETS IN ACCORDANCE WITH APPLICABLE HIGHWAY STANDARDS AND DISTRICT ONE DETAILS.
- CONTACT THE IDOT DISTRICT ONE TRAFFIC CONTROL SUPERVISOR AT (847) 705-4470 AT LEAST 72 HOURS PRIOR TO INSTALLING DETOUR SIGNS ON IL ROUTE 134.

COPYRIGHT © 2013 BY BAXTER & WOODMAN, INC.
 STATE OF ILLINOIS
 PROFESSIONAL DESIGN FIRM
 560 N. WASHINGTON ST., SUITE 200
 DEERFIELD, IL 60015
 847.938.1100
 10/25/2013 10:44:43 AM
 I:\C-91\749\PH2\SURVE\DRAWINGS\DOCS\PHASE-2\071749_P2.SH.MOT4.sht







MAINTENANCE OF TRAFFIC PLAN

SCALE: 1"=40'	STA.	TO STA.	F.A.U. RTE.	SECTION	COUNTY	TOTAL SHEETS	SHEET NO.	
			0201	00-00025-00-FP	LAKE	98	33	
			C-91-070-10			CONTRACT NO. 63868		
			FED. ROAD DIST. NO. 1 (ILLINOIS)					FED. AID PROJECT M-9003(482)



LEGEND

-  PERIMETER EROSION BARRIER
-  INLET FILTERS
-  PERIMETER EROSION BARRIER AS PIPE PROTECTION
-  TURF REINFORCEMENT MAT
- SEE NOTES SHEET 36

COPYRIGHT © 2013 BY BAXTER & WOODMAN, INC.
 STATE OF ILLINOIS - PROFESSIONAL DESIGN FIRM
 LICENSE NO. 018-00021 - EXPIRES 4/30/2015
 07/23/2013 10:27:03 AM 0181017 AM
 S:\PROJECTS\0000000000\00181017\0000-SURVEY\DRAWINGS\PHASE 2\0181017_P2_SH_ERI.DWG

DESIGNED - DSH	REVISED - 10-25-13 ADDENDUM #1
DRAWN - MAC	REVISED -
CHECKED - RWL	REVISED -
DATE - 06/20/13	FILE - 071749_PH2_SH_ERI.sh1

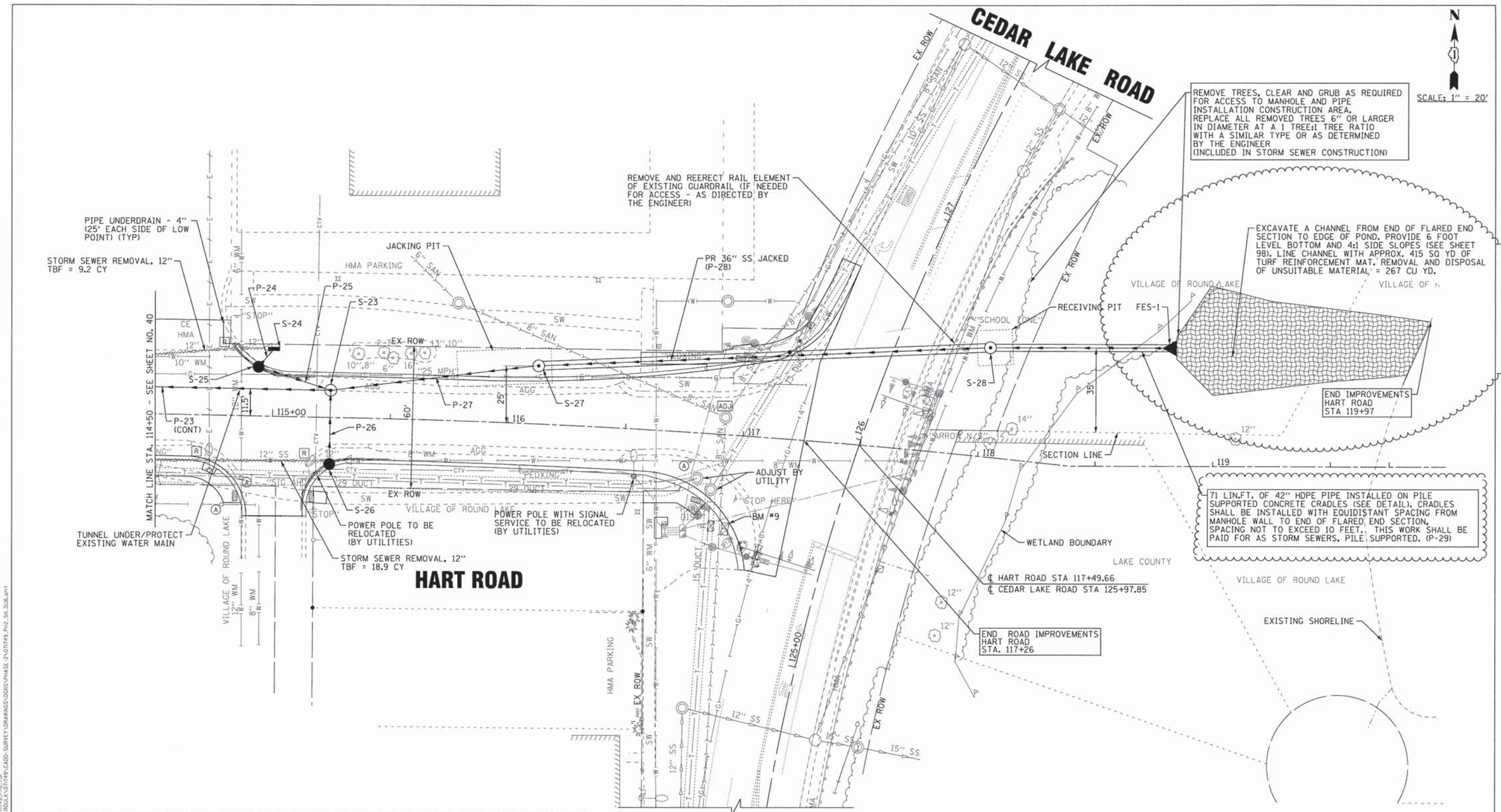
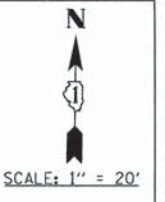
**STATE OF ILLINOIS
DEPARTMENT OF TRANSPORTATION**

**EROSION AND SEDIMENT CONTROL PLAN
HART ROAD**

SCALE: 1"=40'

STA. 102+07 TO STA. 117+26

F.A.U. RTE.	SECTION	COUNTY	TOTAL SHEETS	SHEET NO.
0201	00-00025-00-FP	LAKE	98	34
C-91-070-10		CONTRACT NO. 63868		
FED. ROAD DIST. NO. 1 ILLINOIS		FED. AID PROJECT M-900314821		



STORM STRUCTURES						
NO.	STATION	OFFSET	TYPE	FRAME	RIM/EP	INVERTS
S-23	115+24	11.5' LT	MANHOLE, TYPE A, 5' DIA	TY 1 FR, CLID	775.46 RIM	770.89 12" S; 766.10 12" NW; 750.65 36" E & W
S-24	115+00	28.6' LT	INLET, TYPE A	TY 1 FR, OLID	772.47 RIM	770.00 12" SW
S-25	114+94	20.9' LT	CATCH BASIN, TYPE A, 4' DIA	TY 11 F&G	774.97 EP	769.70 12" NE; 767.70 12" SE
S-26	115+24	19.6' RT	CATCH BASIN, TYPE C	TY 11 F&G	775.44 EP	772.44 12" N
S-27	116+12	24.7' LT	MANHOLE, TYPE A, 5' DIA	TY 1 FR, CLID	778.20 RIM	750.74 36" E & W
S-28	118+00	46.3' LT	MANHOLE, TYPE A, 5' DIA, SPL	TY 1 FR, CLID	768.00 RIM	750.93 36" W; 750.93 42" E
FES-1	118+84	50' LT	PRC FLARED END SECTION, PILE SUPPORTED	--	--	751.01 42" W

CEDAR LAKE ROAD

(SEE NEXT SHEET FOR PROFILE)

STORM PIPES					
NO.	TYPE	LENGTH (LF)	DIA (IN)	SLOPE	TBF (CY)
P-24	SS, (WATER MAIN REQUIREMENTS)	10	12	3.00%	3.8
P-25	SS, CL A, TYPE 2	32	12	5.00%	39.2
P-26	SS, CL A, TYPE 1, RUBBER GASKET	31	12	5.00%	10.0
P-27	SS, CL A, TYPE 5	87	36	0.10%	513.7
P-28	SS, JACKED	187	36	0.10%	0.0
P-29	SS, PILE SUPPORTED (SEE DETAIL)	71	42	0.10%	0.0

COPYRIGHT © 2013 BY BAXTER & WOODMAN, INC.
 STATE OF ILLINOIS - PROFESSIONAL DESIGN FIRM
 LICENSE NO. 184-00001 - EXPIRES 4/30/2015
 07/27/2013 08:58:21 AM



DESIGNED - DSH	REVISED - 10-25-13 ADDENDUM #1
DRAWN - MAC	REVISED -
CHECKED - RWL	REVISED -
DATE - 06/20/13	FILE - 071749_PH2_SH.DU6.sht

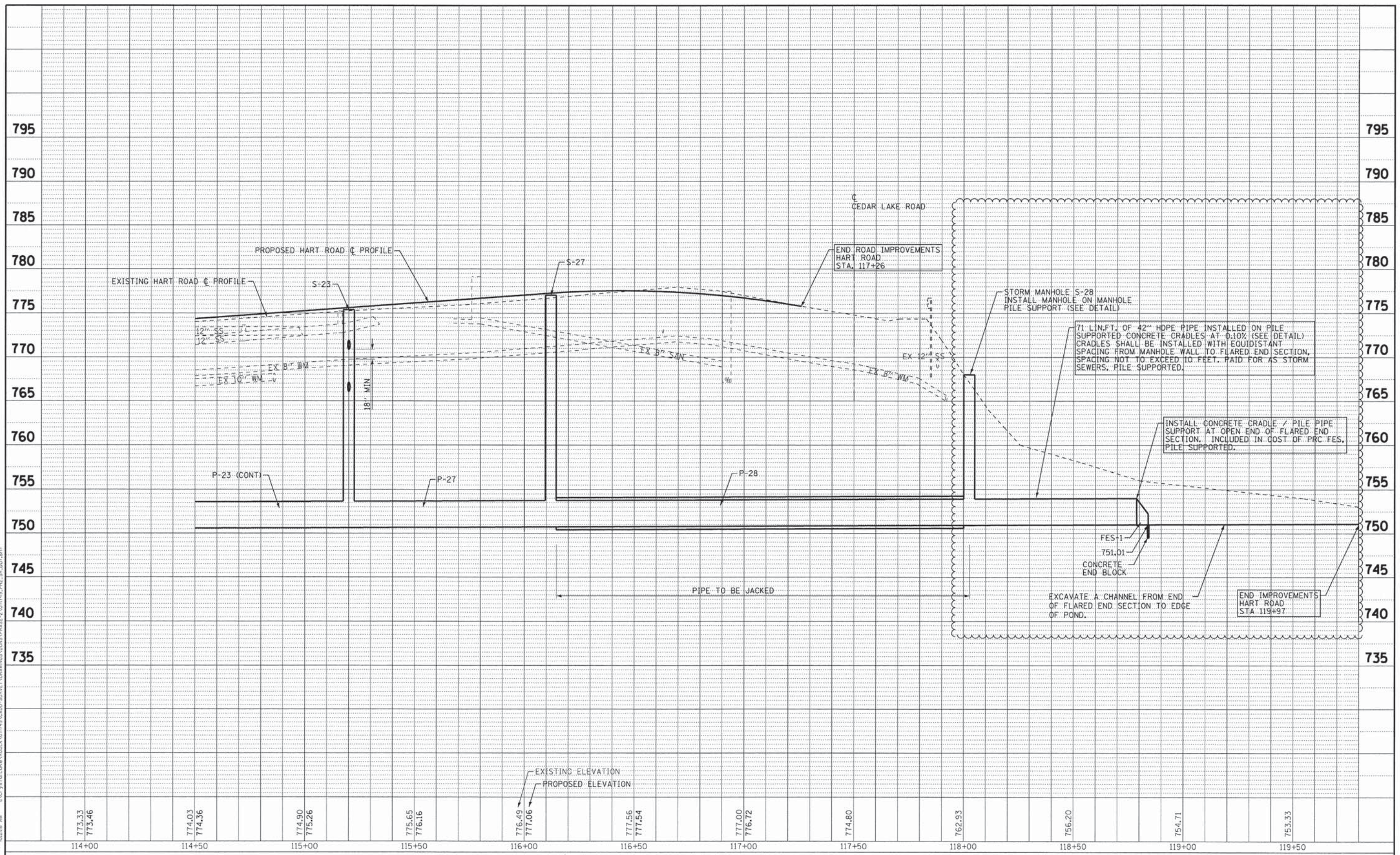
**STATE OF ILLINOIS
DEPARTMENT OF TRANSPORTATION**

**DRAINAGE AND UTILITY PLAN
HART ROAD**

SCALE: 1"=20' STA. 114+50 TO STA. 119+97

F.A.U. RTE.	SECTION	COUNTY	TOTAL SHEETS	SHEET NO.
0201	00-00025-00-FP	LAKE	98	42
C-91-070-10			CONTRACT NO. 63868	
FED. ROAD DIST. NO. 1 [ILLINOIS] FED. AID PROJECT M-90034821				

C:\Users\jw\Documents\Projects\071749\PH2\SH.DU7.sht
 I:\CrystalLake\071749\PH2\SH.DU7.sht
 10/25/2013 10:28 AM
 568kar
 0201
 00-00025-00-PP
 C-91-070-10
 FED. ROAD DIST. NO. 1 ILLINOIS
 FED. AID PROJECT M-90034821



773.33 773.46	774.03 774.36	774.90 775.26	775.65 776.16	776.49 777.06	777.56 777.54	777.00 776.72	774.80	762.93	756.20	754.71	753.33
114+00	114+50	115+00	115+50	116+00	116+50	117+00	117+50	118+00	118+50	119+00	119+50



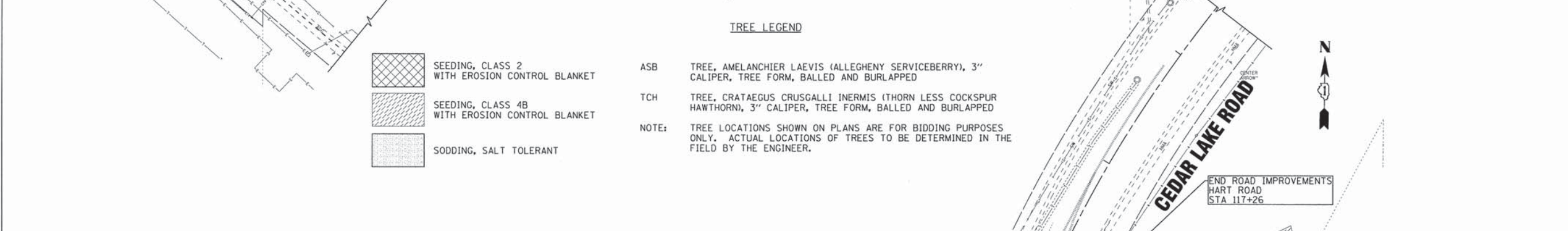
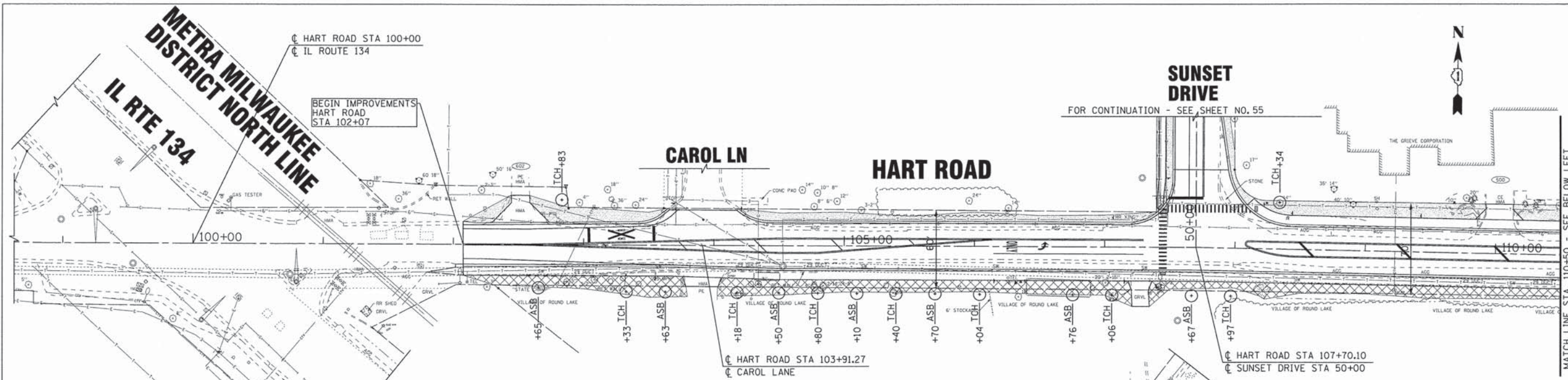
USER NAME = 568kar	DESIGNED - DSH	REVISED - 10-25-13 ADDENDUM #1
PLDT SCALE = 28.0000' / in.	DRAWN - MAC	REVISED -
PLDT DATE = 10/25/2013	CHECKED - RWL	REVISED -
	DATE - 06/20/13	FILE - 071749_PH2_SH.DU7.sht




STATE OF ILLINOIS
DEPARTMENT OF TRANSPORTATION

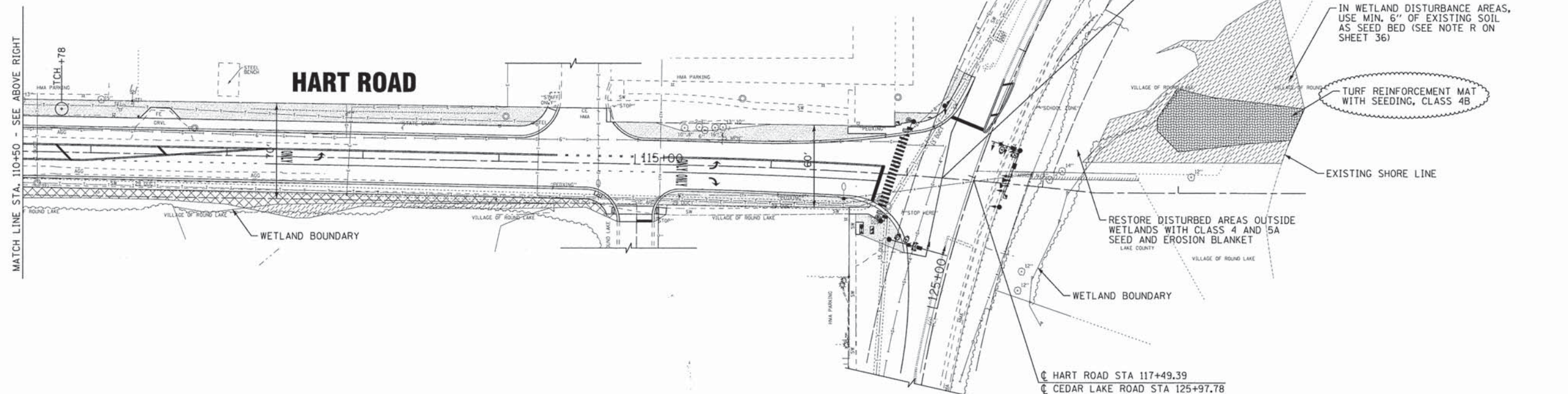
**DRAINAGE AND UTILITY PROFILE
HART ROAD**

SCALE: H: 1"=20' V: 1"=5'
STA. 114+50 TO STA. 119+97

F.A.U. RTE. 0201	SECTION 00-00025-00-PP	COUNTY LAKE	TOTAL SHEETS 98	SHEET NO. 43
C-91-070-10		CONTRACT NO. 63868		
FED. ROAD DIST. NO. 1 ILLINOIS		FED. AID PROJECT M-90034821		



- TREE LEGEND**
-  SEEDING, CLASS 2 WITH EROSION CONTROL BLANKET
 -  SEEDING, CLASS 4B WITH EROSION CONTROL BLANKET
 -  SODDING, SALT TOLERANT
 - ASB TREE, AMELANCHIER LAEVIS (ALLEGHENY SERVICEBERRY), 3" CALIPER, TREE FORM, BALLED AND BURLAPPED
 - TCH TREE, CRATAEGUS CRUSGALLI INERMIS (THORN LESS COCKSPUR HAWTHORN), 3" CALIPER, TREE FORM, BALLED AND BURLAPPED
- NOTE: TREE LOCATIONS SHOWN ON PLANS ARE FOR BIDDING PURPOSES ONLY. ACTUAL LOCATIONS OF TREES TO BE DETERMINED IN THE FIELD BY THE ENGINEER.



COPYRIGHT © 2013 BY BAXTER & WOODMAN, INC.
 STATE OF ILLINOIS PROFESSIONAL ENGINEER
 No. 191 800
 10/25/2013
 11:26:25 AM
 I:\Crystal\Low\8001\071749\CADD-SURVEY\DRAWINGS\DOCS\PHASE-2\071749_PH2_SH.LSL.sht

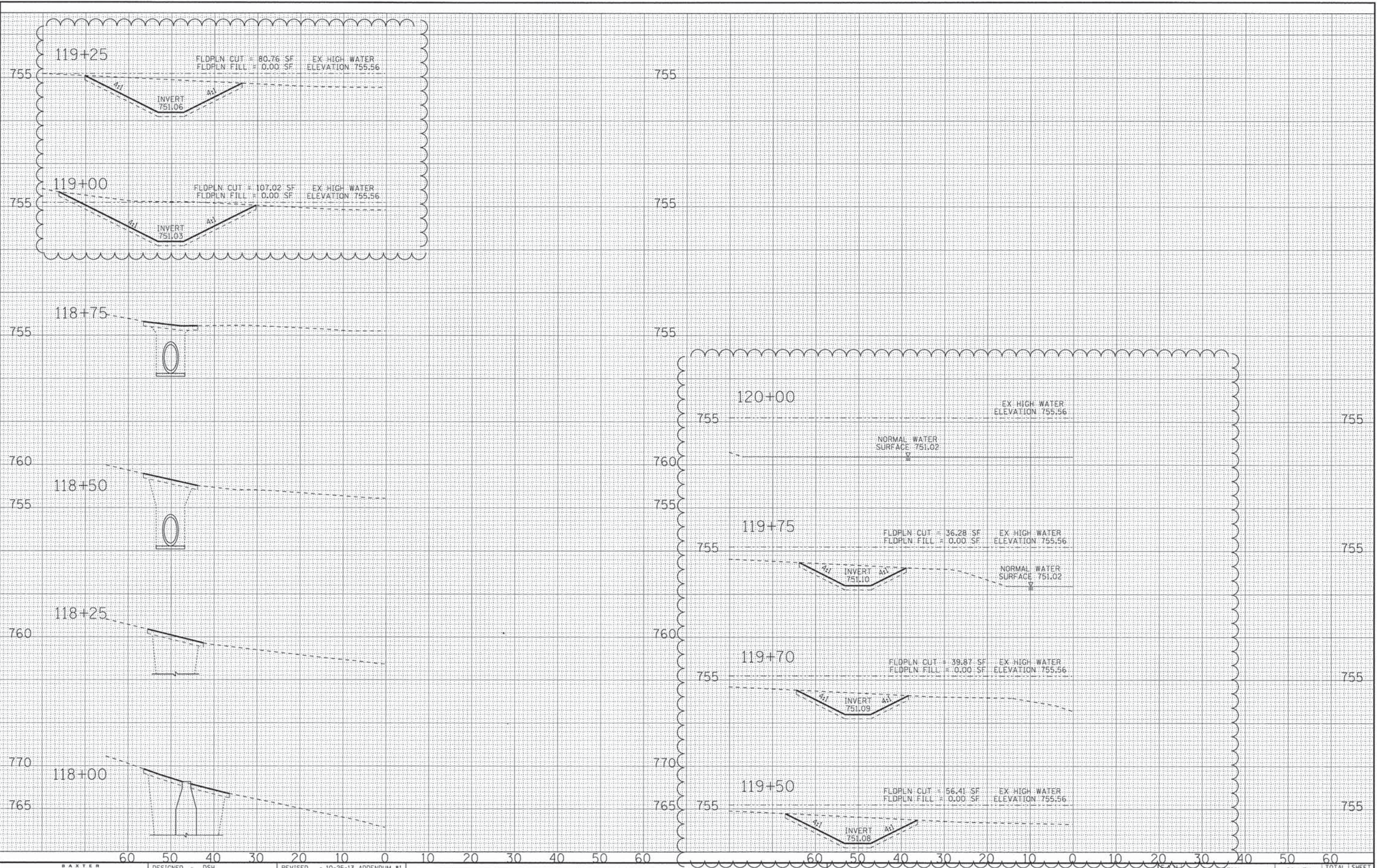


DESIGNED - DSH	REVISED - 10-25-13 ADDENDUM #1
DRAWN - MAC	REVISED -
CHECKED - RWL	REVISED -
DATE - 06/20/13	FILE - 071749_PH2_SH.LSL.sht

**STATE OF ILLINOIS
DEPARTMENT OF TRANSPORTATION**

LANDSCAPING PLAN HART ROAD	
SCALE: 1"=40'	STA. 102+07 TO STA. 117+26

F.A.U. RTE.	SECTION	COUNTY	TOTAL SHEETS	SHEET NO.
0201	00-00025-00-FP	LAKE	98	54
C-91-070-10			CONTRACT NO. 63868	
FED. ROAD DIST. NO. 1 ILLINOIS FED. AID PROJECT M-9003(482)				



COPYRIGHT © 2013 BY BAXTER & WOODMAN, INC. PROJECT NO. 00-00025-00-PP. DRAWING NO. C-91-070-10. DATE: 04/16/13.



DESIGNED - DSH	REVISED - 10-25-13 ADDENDUM #1
DRAWN - KAR	REVISED -
CHECKED - RWL	REVISED -
DATE - 04/16/13	REVISED -

STATE OF ILLINOIS
DEPARTMENT OF TRANSPORTATION

CROSS SECTIONS
CEDAR VALLEY PARK
POND STORM SEWER

SCALE: H: 1"=10' V: 1"=5'
 STA. 118+00 TO STA. 120+00

SECTION	COUNTY	TOTAL SHEETS	SHEET NO.
00-00025-00-PP	LAKE	98	98
C-91-070-10			
FED. ROAD DIST. NO. 1		ILLINOIS FED. AID PROJECT M-90034821	