



PROP. CURVE 74220
 P.I. STA. = 7+93.81
 $\Delta = 17^\circ 37' 36''$ (LT)
 $D = 16^\circ 22' 13''$
 $R = 350.00'$
 $T = 54.27'$
 $L = 107.68'$
 $E = 4.18'$
 $\theta = \dots$
 T.R. = \dots
 S.E. RUN = \dots
 P.C. STA = 7+39.54
 P.T. STA = 8+47.22

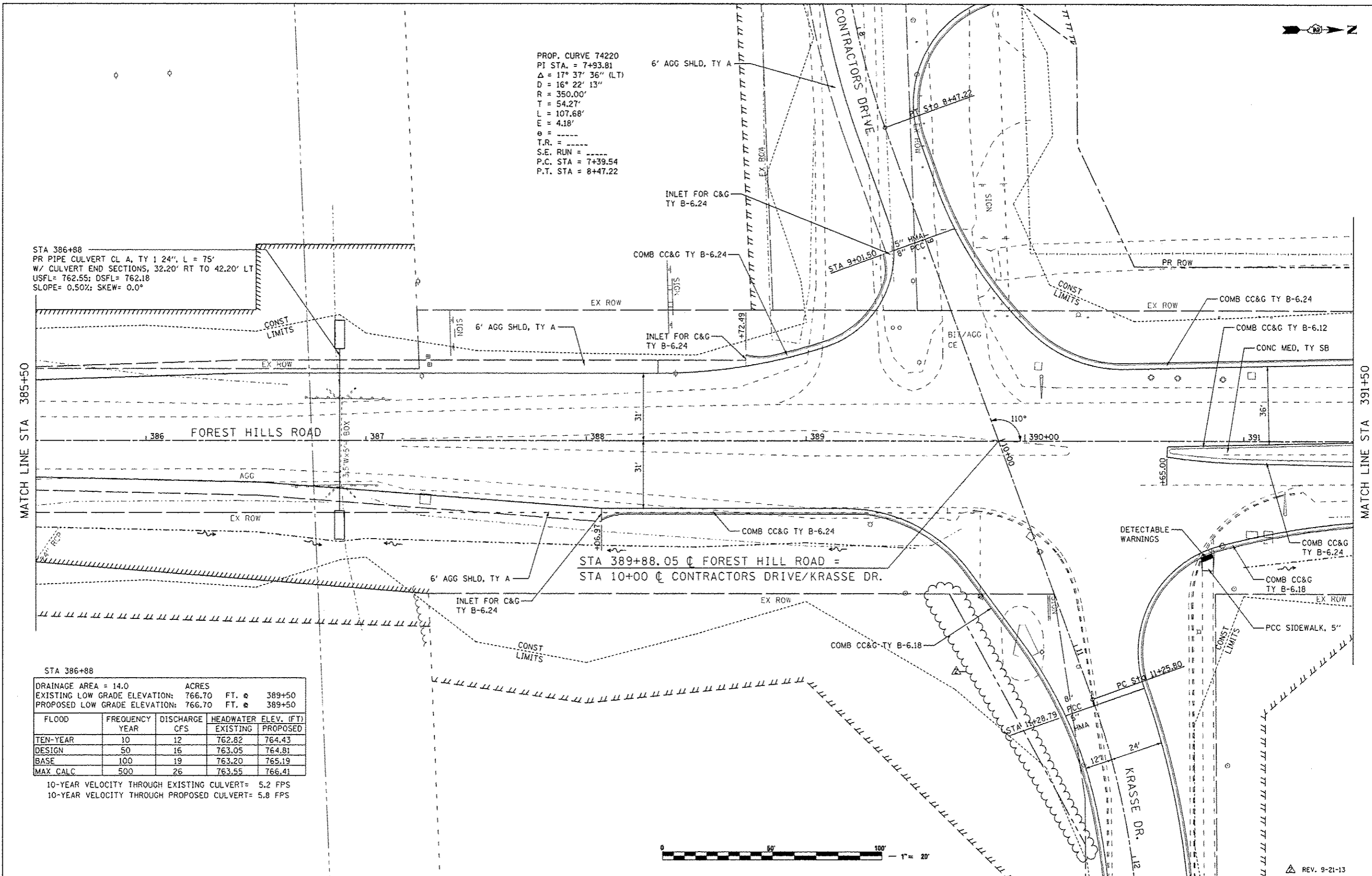
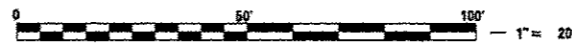
STA 386+88
 PR PIPE CULVERT CL A, TY 1 24", L = 75'
 W/ CULVERT END SECTIONS, 32.20' RT TO 42.20' LT
 USFL = 762.55; DSFL = 762.18
 SLOPE = 0.50%; SKEW = 0.0°

STA 389+88.05 @ FOREST HILL ROAD =
 STA 10+00 @ CONTRACTORS DRIVE/KRASSE DR.

STA 386+88

DRAINAGE AREA = 14.0	ACRES			
EXISTING LOW GRADE ELEVATION: 766.70	FT. @	389+50		
PROPOSED LOW GRADE ELEVATION: 766.70	FT. @	389+50		
FLOOD YEAR	FREQUENCY YEAR	DISCHARGE CFS	HEADWATER ELEV. (FT)	
			EXISTING	PROPOSED
TEN-YEAR	10	12	762.82	764.43
DESIGN	50	16	763.05	764.81
BASE	100	19	763.20	765.19
MAX. CALC	500	26	763.55	766.41

10-YEAR VELOCITY THROUGH EXISTING CULVERT = 5.2 FPS
 10-YEAR VELOCITY THROUGH PROPOSED CULVERT = 5.8 FPS



FILE NAME: ...XCADD SHEETS\288743PLN32.dgn	USER NAME: C1gm110	DESIGNED: MJS	REVISED:
		DRAWN: RMH	REVISED:
		CHECKED: RLH	REVISED:
		DATE: APRIL 30, 2013	REVISED:

STATE OF ILLINOIS
DEPARTMENT OF TRANSPORTATION

ROADWAY PLANS
FOREST HILLS ROAD

SCALE: 1"=20' SHEET NO. OF SHEETS STA. 385+50 TO STA. 391+50

F.A.P. RTE. 303	SECTION 129R	COUNTY WINNEBAGO	TOTAL SHEETS 968	SHEET NO. 177
			CONTRACT NO. 64988	
ILLINOIS FED. AID PROJECT				

REV. 9-21-13