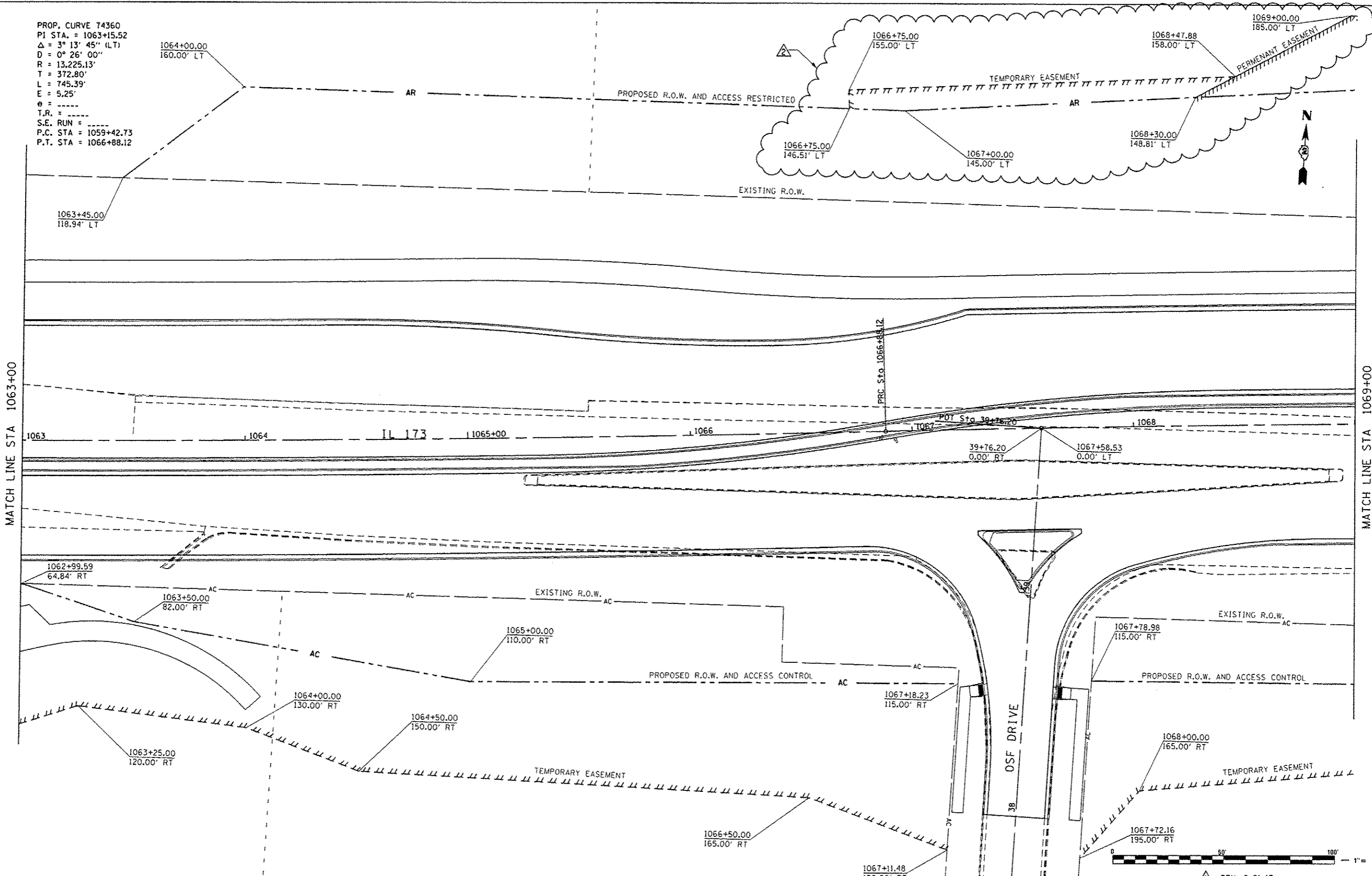


PROP. CURVE 74360  
 P.I. STA. = 1063+15.52  
 $\Delta = 3^\circ 13' 45''$  (LT)  
 $D = 0^\circ 26' 00''$   
 $R = 13,225.13'$   
 $T = 372.80'$   
 $L = 745.39'$   
 $E = 5.25'$   
 $e = \text{-----}$   
 $T.R. = \text{-----}$   
 $S.E. \text{ RUN} = \text{-----}$   
 $P.C. \text{ STA} = 1059+42.73$   
 $P.T. \text{ STA} = 1066+88.12$

MATCH LINE STA 1063+00

MATCH LINE STA 1069+00



FILE NAME : S:\Projects\2013\J085\Sub-21\Uchurich\PIB 195 38 02 D11 Alpine Rd\CAD\CADD Sheets\1207-2013ME1510.dgn  
 PLOT DRIVER : PLOT.DRV



USER NAME = rgoar-tz  
 PLOT SCALE = 48,0000 / 1"  
 PLOT DATE = 9/17/2013 8:43:15 AM

DESIGNED - KEC	REVISED -
DRAWN - KEC	REVISED -
CHECKED - MTM	REVISED -
DATE - APRIL 30, 2013	REVISED -

**STATE OF ILLINOIS  
 DEPARTMENT OF TRANSPORTATION**

**RIGHT OF WAY PLANS  
 IL 173 FROM ALPINE ROAD TO I-90**

PROJECT: STA. 1063+00 TO STA. 1069+00  
 SHEET NO. 8 OF 41 SHEETS

F.A.P. RTE. 303	SECTION 129R	COUNTY WINNEBAGO	TOTAL SHEETS 968	SHEET NO. 496
CONTRACT NO. 64988			ILLINOIS FED. AID PROJECT	

