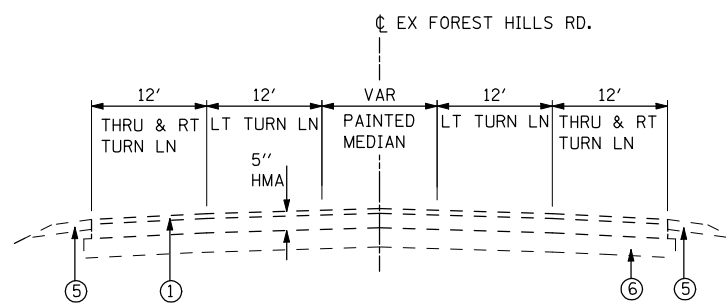


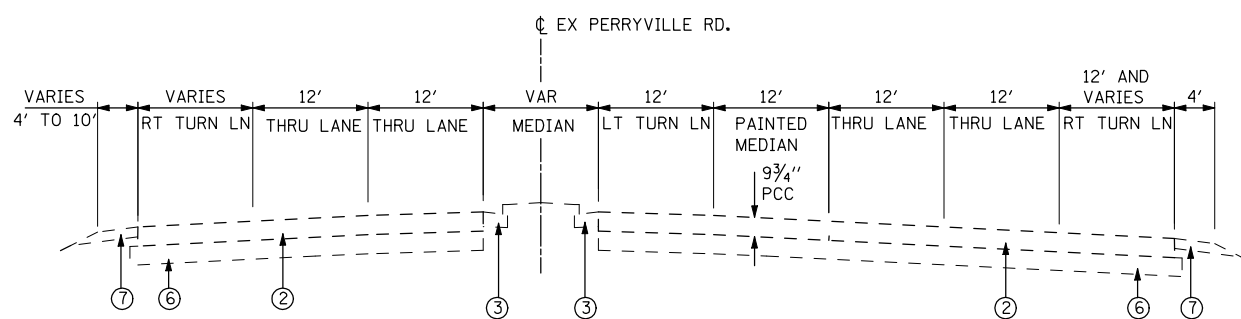
EXISTING LEGEND:

- ① HMA OVERLAY
- ② PCC PAVEMENT
- ③ COMBINATION CONCRETE CURB AND GUTTER
- ④ HMA SHOULDER
- ⑤ AGGREGATE SHOULDER
- ⑥ SUB-BASE GRANULAR MATERIAL
- ⑦ PCC SHOULDER, 9"



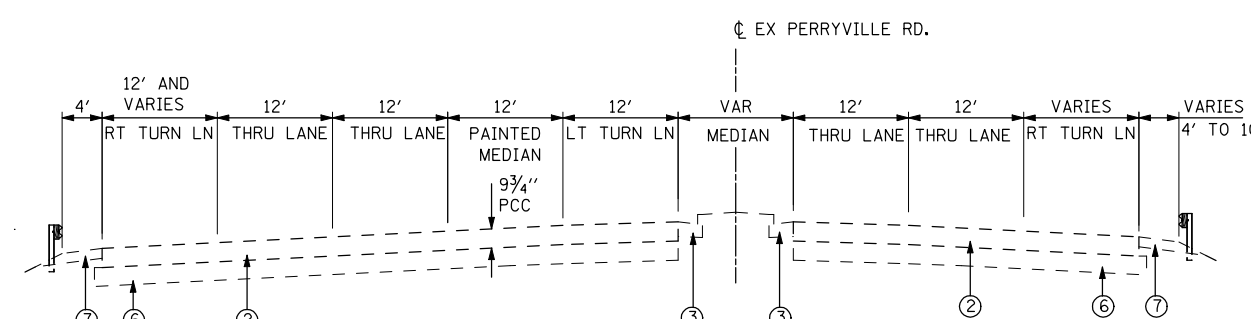
FOREST HILLS RD. – EXISTING TYPICAL SECTION

STA 380+96 TO STA 400+00
STA 450+00 TO STA 466+17



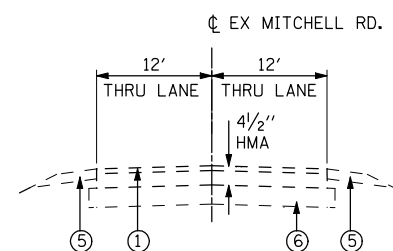
PERRYVILLE RD – EXISTING TYPICAL SECTION

STA 248+10 TO STA 250+42



PERRYVILLE RD – PROPOSED TYPICAL SECTION

STA 250+42 TO STA 253+50



MITCHELL RD – EXISTING TYPICAL SECTION

STA 230+51.49 TO STA 238+75

FILE NAME = ...\\CADD\CADD SHEETS\200793TYP.dgn	USER NAME = Elgin 110	DESIGNED - MJS	REVISED -
		DRAWN - LMP	REVISED -
		CHECKED - MJS	REVISED -
		DATE - APRIL 30, 2013	REVISED -

**STATE OF ILLINOIS
DEPARTMENT OF TRANSPORTATION**

**TYPICAL SECTIONS
EXISTING FOREST HILLS RD. – PERRYVILLE RD.**

SCALE: SHEET NO. OF SHEETS STA. TO STA.

F.A.P. RTE.	SECTION	COUNTY	TOTAL SHEETS	SHEET NO.
303	129R	WINNEBAGO	968	33
			CONTRACT NO. 64988	
ILLINOIS FED. AID PROJECT				