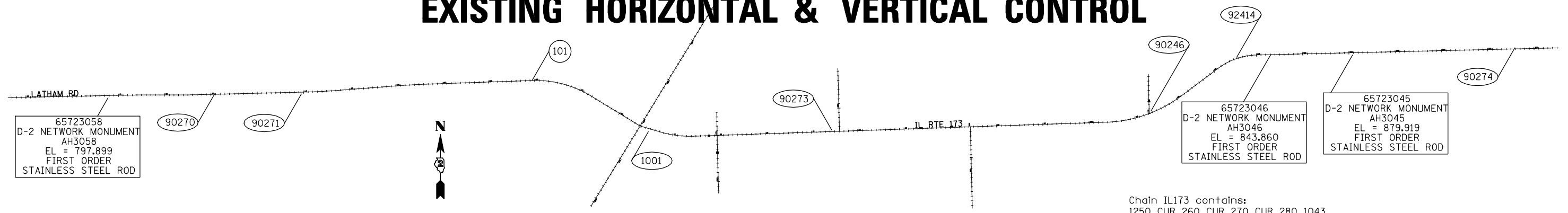


# EXISTING HORIZONTAL & VERTICAL CONTROL



Chain LATHAMRD contains:  
81 CUR 200 CUR 210 CUR 220 CUR 230 CUR 240 250

Beginning chain LATHAMRD description

Point 81 N 2,078,579.0959 E 2,587,968.8944 Sta 39+17.5652

Course from 81 to PC 200 88° 49' 17.0966" Dist 3,331.1632'

Curve Data  
\*\*\*\*\*

Curve 200  
P.I. Station 75+95.0448 N 2,078,654.7370 E 2,591,645.5960  
Delta = 1° 46' 00.0029" (RT)  
Degree = 0° 15' 18.3087"  
Tangent = 346.3164'  
Length = 692.5779'  
Radius = 22,461.3802'  
External = 2.6696'  
Long Chord = 692.5504'  
Mid. Ord. = 2.6693'  
P.C. Station 72+48.7284 N 2,078,647.6137 E 2,591,299.3529  
P.T. Station 79+41.3063 N 2,078,651.1825 E 2,591,991.8941  
C.C. N 2,056,190.9854 E 2,591,761.3549

Curve Data  
\*\*\*\*\*

Curve 210  
P.I. Station 83+19.0705 N 2,078,647.3052 E 2,592,369.6385  
Delta = 1° 58' 06.3955" (LT)  
Degree = 0° 15' 38.0312"  
Tangent = 377.7642'  
Length = 755.4541'  
Radius = 21,989.1204'  
External = 3.2447'  
Long Chord = 755.4170'  
Mid. Ord. = 3.2442'  
P.C. Station 79+41.3063 N 2,078,651.1825 E 2,591,991.8941  
P.T. Station 86+96.7604 N 2,078,656.4053 E 2,592,747.2931  
C.C. N 2,100,639.1446 E 2,592,217.5862

Course from PT 210 to PC 220 88° 37' 10.7040" Dist 2,310.6899'

Curve Data  
\*\*\*\*\*

Curve 220  
P.I. Station 113+58.6187 N 2,078,720.5282 E 2,595,408.3789  
Delta = 3° 00' 54.7836" (LT)  
Degree = 0° 25' 45.8807"  
Tangent = 351.1684'  
Length = 702.1747'  
Radius = 13,342.8668'  
External = 4.6204'  
Long Chord = 702.0937'  
Mid. Ord. = 4.6188'  
P.C. Station 110+07.4503 N 2,078,712.0687 E 2,595,057.3124  
P.T. Station 117+09.6250 N 2,078,747.4424 E 2,595,758.5144  
C.C. N 2,092,051.0634 E 2,594,735.8895

Course from PT 220 to PC 230 85° 36' 15.9204" Dist 1,291.1453'

IL RTE 173 CURVE POINT NUMBERS

CURVE	PI	CC	PC	PT
260	260	261	262	263
270	270	271	272	273
280	280	281	282	283

LATHAM RD CURVE POINT NUMBERS

CURVE	PI	CC	PC	PT
200	200	201	202	203
210	210	211	212	213
220	220	221	222	223
230	230	231	232	233
240	240	241	242	243

Curve Data  
\*\*\*\*\*

Curve 230  
P.I. Station 133+57.3629 N 2,078,873.7285 E 2,597,401.4058  
Delta = 2° 25' 25.0738" (RT)  
Degree = 0° 20' 23.5777"  
Tangent = 356.5926'  
Length = 713.0789'  
Radius = 16,857.5165'  
External = 3.7711'  
Long Chord = 713.0257'  
Mid. Ord. = 3.7703'  
P.C. Station 130+00.7703 N 2,078,846.3985 E 2,597,045.8620  
P.T. Station 137+13.8492 N 2,078,885.9989 E 2,597,757.7872  
C.C. N 2,062,038.4655 E 2,598,337.8570

Course from PT 230 to PC 240 88° 01' 40.9943" Dist 2,235.7847'

Curve Data  
\*\*\*\*\*

Curve 240  
P.I. Station 166+34.4168 N 2,078,986.4961 E 2,600,676.6253  
Delta = 33° 26' 24.1747" (RT)  
Degree = 2° 30' 48.2674"  
Tangent = 684.7829'  
Length = 1,330.4666'  
Radius = 2,279.6056'  
External = 100.6317'  
Long Chord = 1,311.6634'  
Mid. Ord. = 96.3771'  
P.C. Station 159+49.6339 N 2,078,962.9326 E 2,599,992.2479  
P.T. Station 172+80.1005 N 2,078,629.0231 E 2,601,260.6978  
C.C. N 2,076,684.6770 E 2,600,070.6895

Course from PT 240 to 250 121° 28' 05.1690" Dist 1,244.7295'

Point 250 N 2,077,979.2446 E 2,602,322.3661 Sta 185+24.8300

Ending chain LATHAMRD description

Chain IL173 contains:  
1250 CUR 260 CUR 270 CUR 280 1043

Beginning chain IL173 description

Point 1250 N 2,077,979.2446 E 2,602,322.3661 Sta 2+67.7000

Course from 1250 to PC 260 106° 27' 42.4748" Dist 451.2729'

Curve Data  
\*\*\*\*\*

Curve 260  
P.I. Station 10+91.2740 N 2,077,745.8635 E 2,603,112.1809  
Delta = 18° 24' 34.9257" (LT)  
Degree = 2° 29' 38.0916"  
Tangent = 372.3011'  
Length = 738.1850'  
Radius = 2,297.4237'  
External = 29.9705'  
Long Chord = 735.0137'  
Mid. Ord. = 29.5846'  
P.C. Station 7+18.9729 N 2,077,851.3647 E 2,602,755.1409  
P.T. Station 14+57.1580 N 2,077,758.5183 E 2,603,484.2668  
C.C. N 2,080,054.6145 E 2,603,406.1756

Course from PT 260 to PC 270 88° 03' 07.5491" Dist 8,914.3593'

Curve Data  
\*\*\*\*\*

Curve 270  
P.I. Station 112+77.6265 N 2,078,092.3237 E 2,613,299.0605  
Delta = 34° 56' 56.5504" (LT)  
Degree = 1° 59' 26.2683"  
Tangent = 906.1092'  
Length = 1,755.6774'  
Radius = 2,878.2736'  
External = 139.2573'  
Long Chord = 1,728.5855'  
Mid. Ord. = 132.8307'  
P.C. Station 103+71.5173 N 2,078,061.5243 E 2,612,393.4750  
P.T. Station 121+27.1947 N 2,078,636.3313 E 2,614,023.6911  
C.C. N 2,080,938.1346 E 2,612,295.6402

Course from PT 270 to PC 280 53° 06' 10.9987" Dist 984.6784'

Curve Data  
\*\*\*\*\*

Curve 280  
P.I. Station 135+72.6268 N 2,079,504.1363 E 2,615,179.6273  
Delta = 35° 32' 38.4282" (RT)  
Degree = 3° 59' 08.9285"  
Tangent = 460.7538'  
Length = 891.7630'  
Radius = 1,437.4927'  
External = 72.0368'  
Long Chord = 877.5319'  
Mid. Ord. = 68.5991'  
P.C. Station 131+11.8730 N 2,079,227.5101 E 2,614,811.1549  
P.T. Station 140+03.6360 N 2,079,515.0152 E 2,615,640.2526  
C.C. N 2,078,077.9232 E 2,615,674.1933

Course from PT 280 to 1043 88° 38' 49.4269" Dist 7,167.3471'

Point 1043 N 2,079,684.2435 E 2,622,805.6016 Sta 211+70.9831

Ending chain IL173 description