

**DETAIL - NE ISLAND LAYOUT**

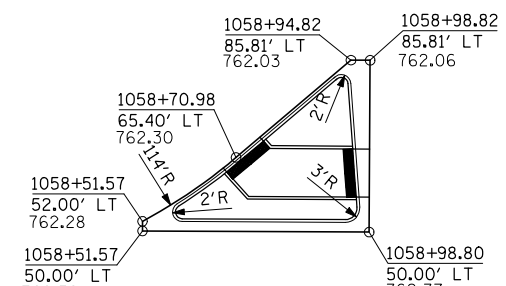
**CORNER RADIUS DATA**

PC = 1059+84.55, 217.85' LT  
 C = 1062+89.52, 228.33' LT  
 PCC = 1060+12.94, 104.15' LT  
 C = 1060+95.36, 142.00' LT  
 PT = 1060+95.36, 52.00' LT  
 R1 = 300'  
 R2 = 90'

**CORNER RADIUS DATA**

PC = 1057+32.81, 52.00' LT  
 C = 1057+32.81, 352.00' LT  
 PCC = 1058+24.28, 66.29' LT  
 C = 1057+96.84, 152.00' LT  
 PT = 1058+86.84, 151.97' LT  
 R1 = 300'  
 R2 = 90'

**DETAIL - NW ISLAND LAYOUT**

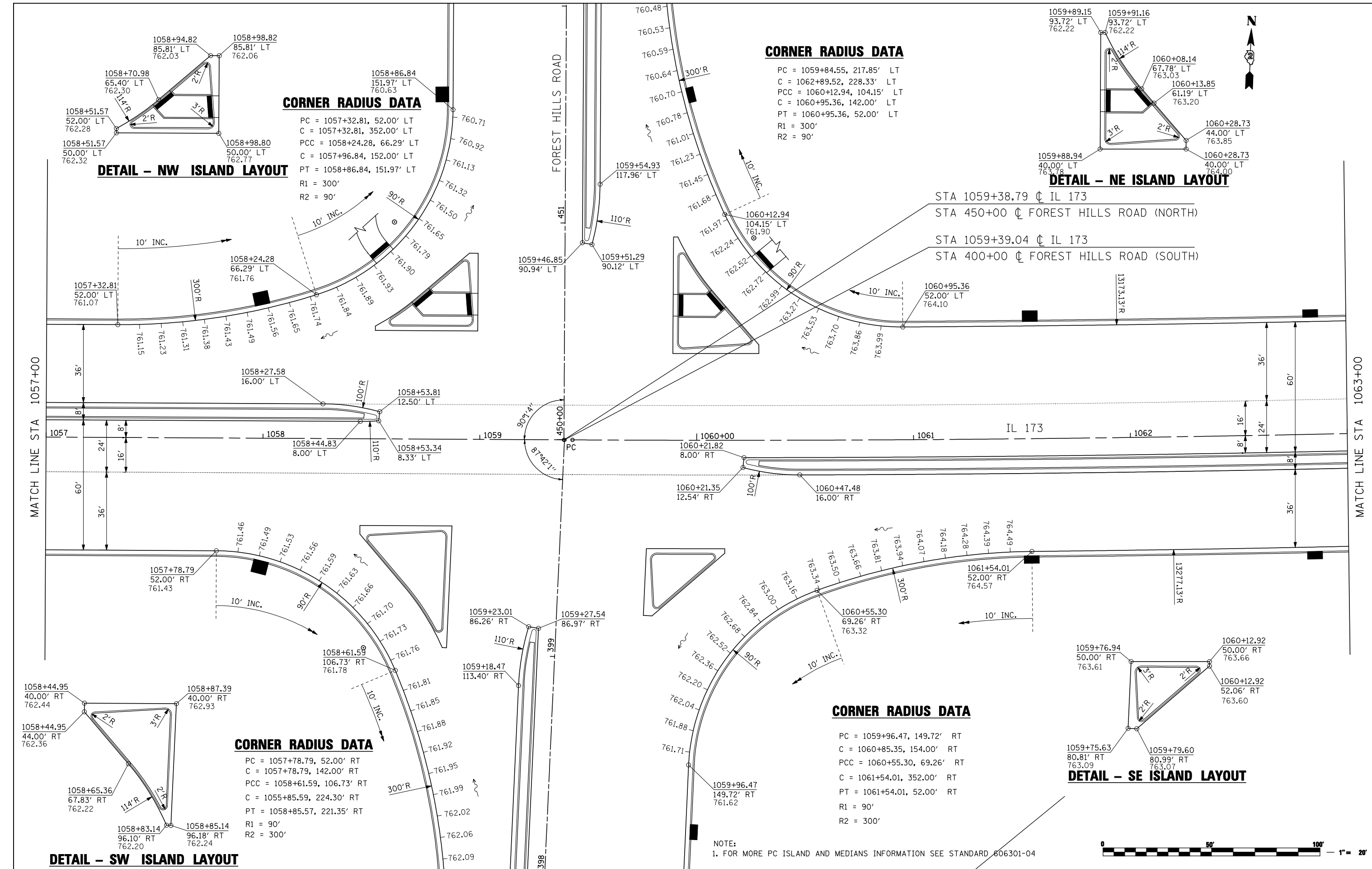


10' INC.

STA 1059+38.79  $\downarrow$  IL 173  
 STA 450+00  $\downarrow$  FOREST HILLS ROAD (NORTH)  
 STA 1059+39.04  $\downarrow$  IL 173  
 STA 400+00  $\downarrow$  FOREST HILLS ROAD (SOUTH)

MATCH LINE STA 1057+00

MATCH LINE STA 1063+00



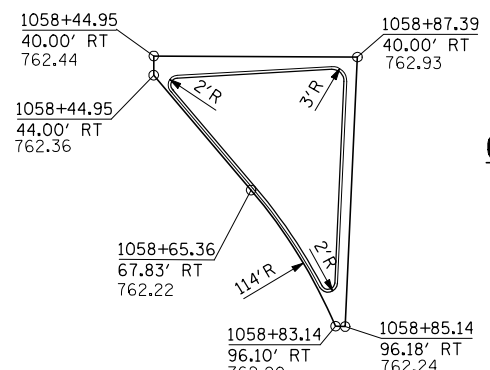
**CORNER RADIUS DATA**

PC = 1059+96.47, 149.72' RT  
 C = 1060+85.35, 154.00' RT  
 PCC = 1060+55.30, 69.26' RT  
 C = 1061+54.01, 352.00' RT  
 PT = 1061+54.01, 52.00' RT  
 R1 = 90'  
 R2 = 300'

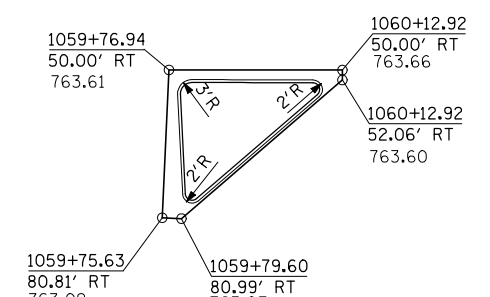
**CORNER RADIUS DATA**

PC = 1057+78.79, 52.00' RT  
 C = 1057+78.79, 142.00' RT  
 PCC = 1058+61.59, 106.73' RT  
 C = 1055+85.59, 224.30' RT  
 PT = 1058+85.57, 221.35' RT  
 R1 = 90'  
 R2 = 300'

**DETAIL - SW ISLAND LAYOUT**



**DETAIL - SE ISLAND LAYOUT**



NOTE:  
 1. FOR MORE PC ISLAND AND MEDIANS INFORMATION SEE STANDARD 606301-04



FILE NAME = ...load sheets\2007931VP\PLN09.dgn	USER NAME = Elgin 110	DESIGNED - MJS	REVISED -
		DRAWN - LMP	REVISED -
		CHECKED - RMH	REVISED -
		DATE - APRIL 30, 2013	REVISED -

**STATE OF ILLINOIS  
 DEPARTMENT OF TRANSPORTATION**

<b>INTERSECTION AND VARIABLE WIDTH PAVEMENT PLANS</b>			
<b>IL 173 FROM ALPINE ROAD TO I-90</b>			
SCALE: 1"=20'	SHEET NO. OF SHEETS	STA. 1057+00 TO STA. 1063+00	

F.A.P. RTE. 303	SECTION 129R	COUNTY WINNEBAGO	TOTAL SHEETS 968	SHEET NO. 538
ILLINOIS FED. AID PROJECT			CONTRACT NO. 64988	