

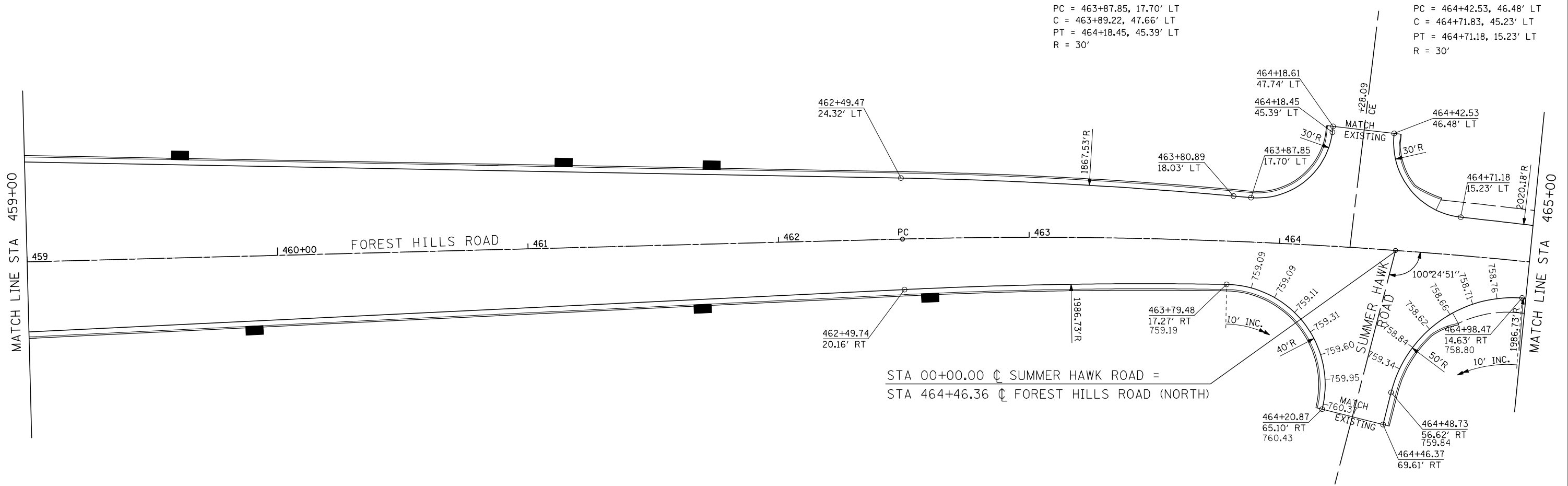


CORNER RADIUS DATA

PC = 463+87.85, 17.70' LT
 C = 463+89.22, 47.66' LT
 PT = 464+18.45, 45.39' LT
 R = 30'

CORNER RADIUS DATA

PC = 464+42.53, 46.48' LT
 C = 464+71.83, 45.23' LT
 PT = 464+71.18, 15.23' LT
 R = 30'



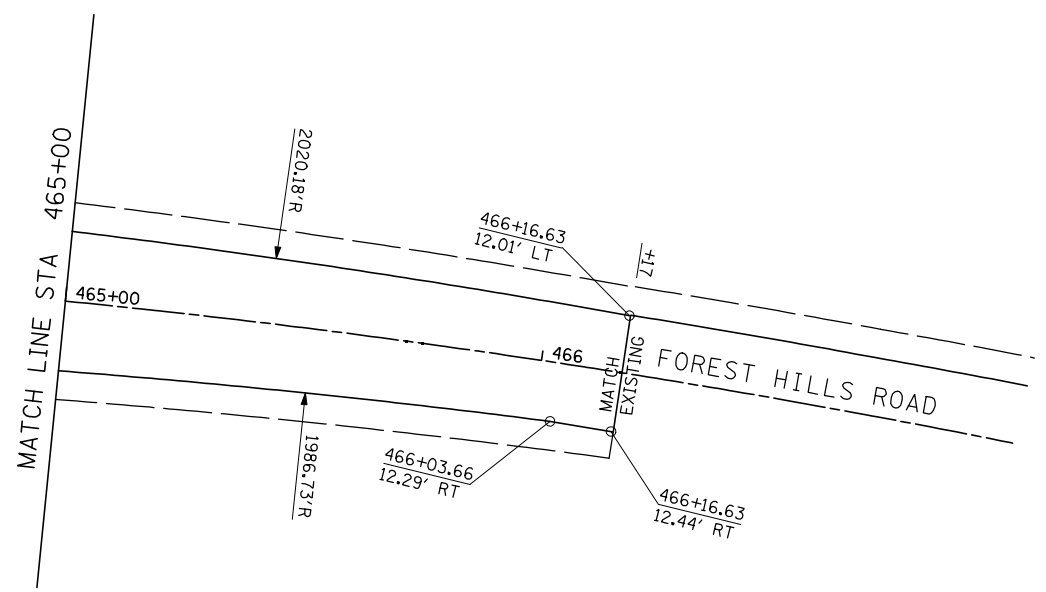
STA 00+00.00 \downarrow SUMMER HAWK ROAD =
 STA 464+46.36 \downarrow FOREST HILLS ROAD (NORTH)

CORNER RADIUS DATA

PC = 463+79.48, 17.27' RT
 C = 463+80.41, 57.26' RT
 PT = 464+20.87, 65.10' RT
 R = 40'

CORNER RADIUS DATA

PC = 464+48.73, 56.62' RT
 C = 464+99.63, 64.61' RT
 PT = 464+98.47, 14.63' RT
 R = 50'



FILE NAME = ...load sheets\2007931VPLN32.dgn	USER NAME = Elgin 110	DESIGNED - MJS	REVISED -	STATE OF ILLINOIS DEPARTMENT OF TRANSPORTATION	INTERSECTION AND VARIABLE WIDTH PAVEMENT PLANS FOREST HILLS ROAD			F.A.P. RTE. 303	SECTION 129R	COUNTY WINNEBAGO	TOTAL SHEETS 968	SHEET NO. 561
	THE UPCHURCH GROUP, INC.	PLOT SCALE = 40.0000' / IN.	CHECKED - RMH					REVISED -	SCALE: 1"=20'	SHEET NO. OF SHEETS	STA. 459+00 TO STA. 466+16.63	CONTRACT NO. 64988
	PLOT DATE = 5/1/2013 1:59:15 PM	DATE - APRIL 30, 2013	REVISED -		ILLINOIS FED. AID PROJECT							