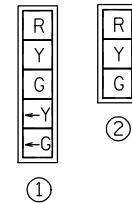


TEMPORARY SIGNAL HEADS



SIGNAL HEAD LOCATION AS DIRECTED BY ENGINEER AND TO BE ADJUSTED DURING STAGING ALSO AS DIRECTED BY THE ENGINEER.



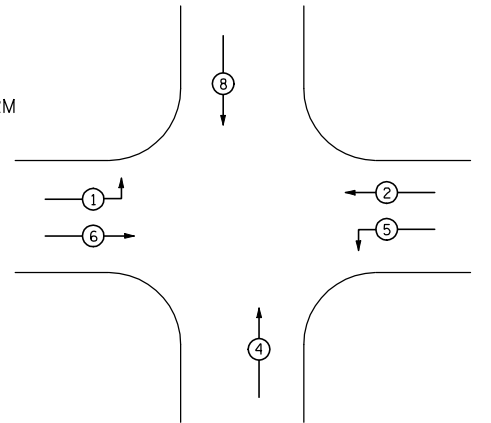
EXISTING TEMPORARY SIGNALS HAVE BEEN CONSTRUCTED BY OTHERS

TEMPORARY SIGNAL CONTROLLER

CONTINENTAL DR

LEGEND

- EX COMBINATION MAST ARM
- EX TRAFFIC SIGNAL
- EX CONTROLLER
- EX HANDHOLE
- EX SPLICE BOX
- EX POWER POLE
- EX LIGHT POLE
- TEMP LIGHTING
- TEMP SIGNAL



PHASE DESIGNATION DIAGRAM



USER NAME = #USER*	DESIGNED - JAF	REVISED -
PLOT SCALE = #SCALE*	DRAWN - JAF	REVISED -
PLOT DATE = #DATE*	CHECKED - THW	REVISED -
	DATE - 4.30 2013	REVISED -

STATE OF ILLINOIS  
DEPARTMENT OF TRANSPORTATION

EXISTING & TEMPORARY SIGNAL PLAN  
IL RTE. 173 & CONTINENTAL DR.

SCALE: SHEET NO. 1 OF 1 SHEETS STA. TO STA.

F.A. RTE.	SECTION	COUNTY	TOTAL SHEETS	SHEET NO.
303	129R	WINNEBAGO	968	649
			CONTRACT NO. 64988	
ILLINOIS FED. AID PROJECT				