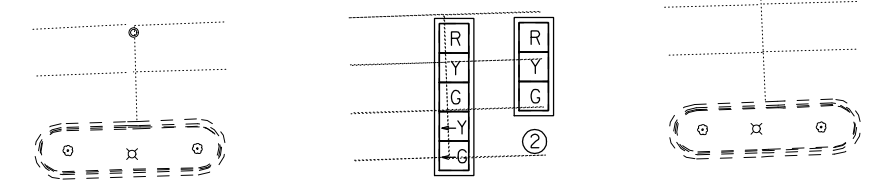


TEMPORARY SIGNAL HEADS



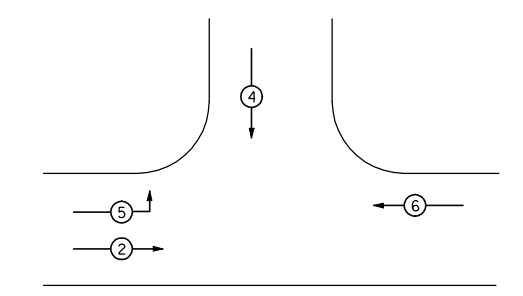
SIGNAL HEAD LOCATION AS DIRECTED BY ENGINEER AND TO BE ADJUSTED DURING STAGING ALSO AS DIRECTED BY THE ENGINEER.

REMOVE EXISTING MAST ARM & FOUNDATION
 REMOVE EXISTING CONTROLLER & FOUNDATION
 REMOVE EXISTING TRAFFIC SIGNAL POST & FOUNDATION

HANDHOLE TO BE REMOVE
 REMOVE EXISTING MAST ARM & FOUNDATION

REMOVE EXISTING MAST ARM & FOUNDATION
 HANDHOLE TO BE REMOVED

- LEGEND**
- EX COMBINATION MAST ARM
 - EX TRAFFIC SIGNAL
 - EX CONTROLLER
 - EX HANDHOLE
 - EX SPLICE BOX
 - EX POWER POLE
 - EX LIGHT POLE
 - TEMP LIGHTING
 - TEMP SIGNAL



PHASE DESIGNATION DIAGRAM



USER NAME = \$USER*	DESIGNED - JAF	REVISED -
	DRAWN - JAF	REVISED -
PLOT SCALE = \$SCALE*	CHECKED - THW	REVISED -
PLOT DATE = \$DATE*	DATE - 4.30 2013	REVISED -

**STATE OF ILLINOIS
 DEPARTMENT OF TRANSPORTATION**

**EXISTING & TEMPORARY SIGNAL PLAN
 IL RTE 173 & BURDEN ROAD**

SCALE: SHEET NO. 1 OF 1 SHEETS STA. TO STA.

F.A. RTE.	SECTION	COUNTY	TOTAL SHEETS	SHEET NO.
303	129R	WINNEBAGO	968	655
			CONTRACT NO. 64988	
ILLINOIS FED. AID PROJECT				