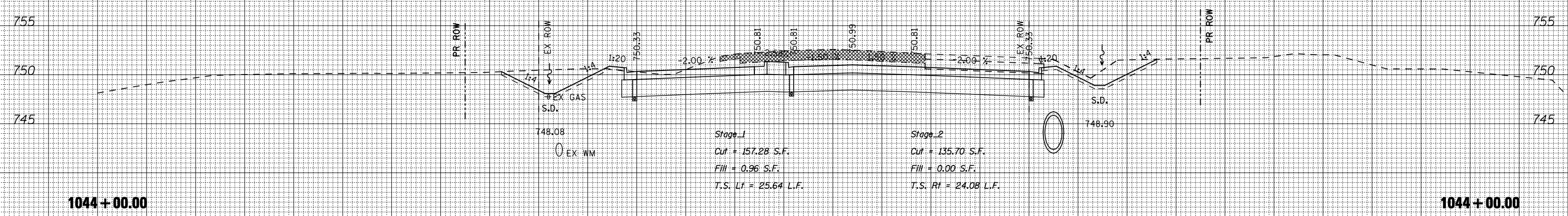
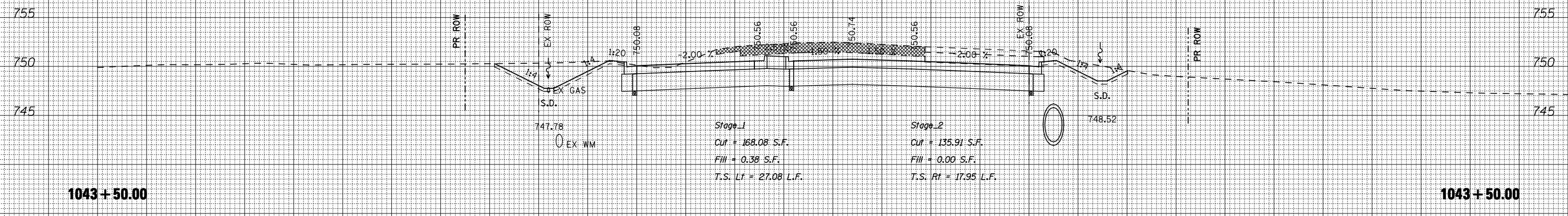


170 160 150 140 130 120 110 100 90 80 70 60 50 40 30 20 10 0 10 20 30 40 50 60 70 80 90 100 110 120 130 140 150

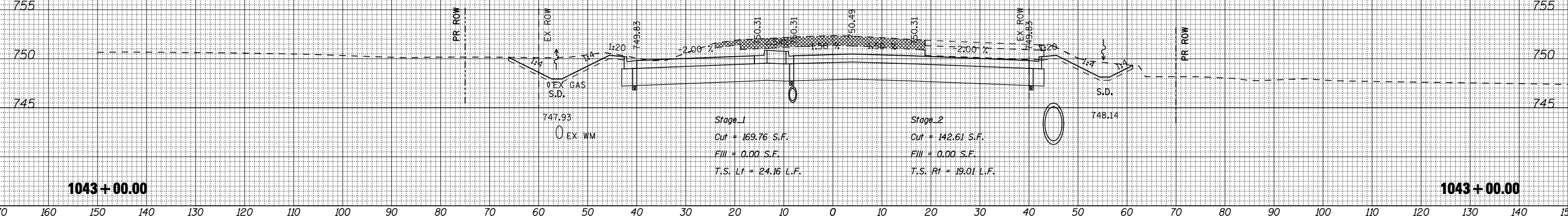
DATE	
BY	
SURVEYED	
PLOTTED	
TEMPLATE	
NOTE BOOK	
AREAS CHECKED	
NO.	



DATE	
BY	
SURVEYED	
PLOTTED	
TEMPLATE	
NOTE BOOK	
AREAS CHECKED	
NO.	



DATE	
BY	
SURVEYED	
PLOTTED	
TEMPLATE	
NOTE BOOK	
AREAS CHECKED	
NO.	



FILE NAME = ... \CADD SHEETS\Z007933\MISHT.DGN

USER NAME = E1gr110

DESIGNED - SJF

DRAWN - SAE

CHECKED - RMH

DATE - APRIL 30, 2013

THE UPCHURCH GROUP, INC.

DESIGNED	- SJF	REVISED	-
DRAWN	- SAE	REVISED	-
CHECKED	- RMH	REVISED	-
DATE	- APRIL 30, 2013	REVISED	-

**STATE OF ILLINOIS  
DEPARTMENT OF TRANSPORTATION**

**CROSS SECTIONS IL 173**

SCALE: SHEET NO. OF SHEETS STA. 1043+00.00 TO STA. 1044+00.00

F.A.P. RTE.	SECTION	COUNTY	TOTAL SHEETS	SHEET NO.
303	129R	WINNEBAGO	968	790
			CONTRACT NO.	64988
ILLINOIS FED. AID PROJECT				