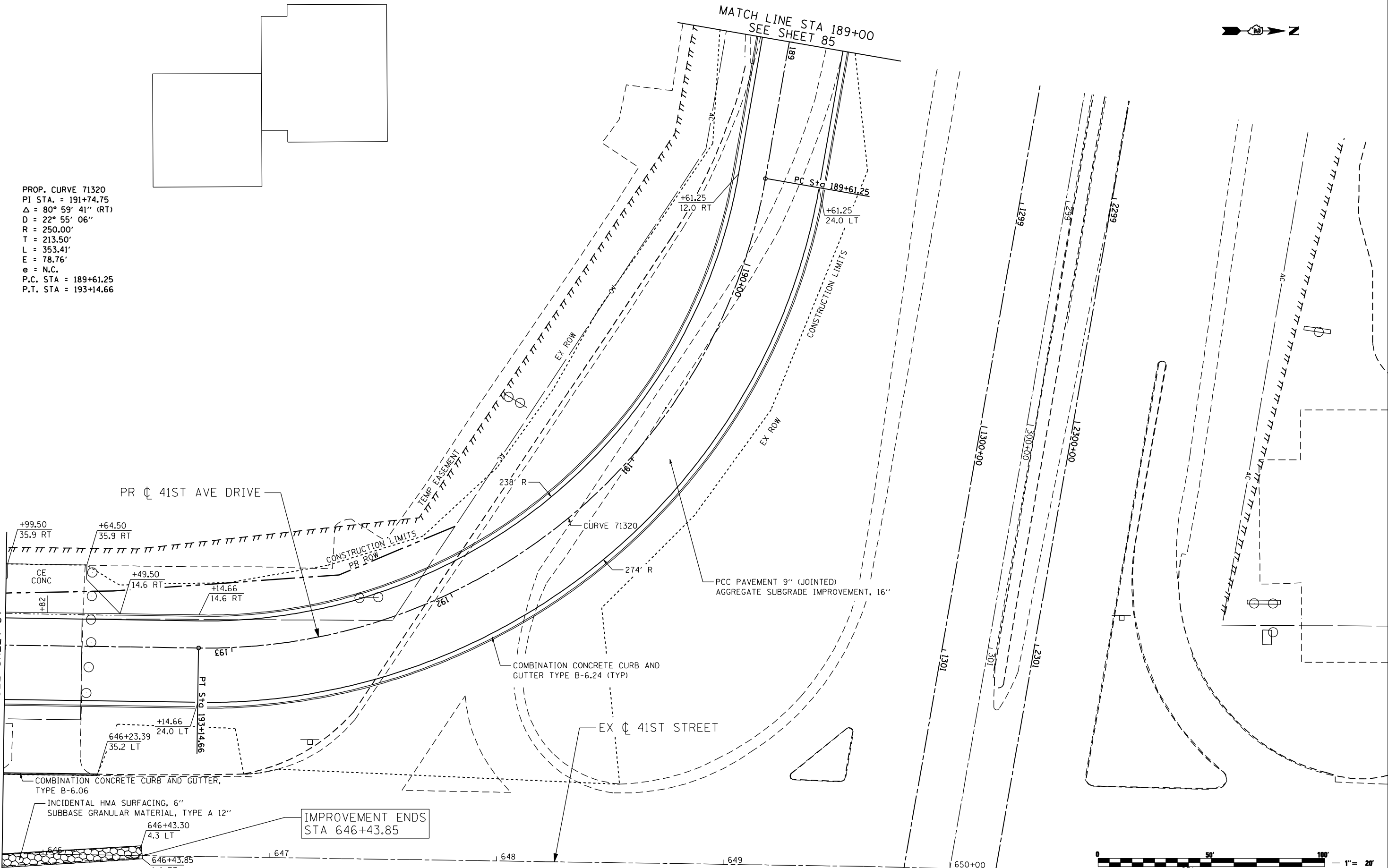




PROP. CURVE 71320  
 PI STA. = 191+74.75  
 $\Delta = 80^\circ 59' 41''$  (RT)  
 $D = 22^\circ 55' 06''$   
 $R = 250.00'$   
 $T = 213.50'$   
 $L = 353.41'$   
 $E = 78.76'$   
 $e = N.C.$   
 P.C. STA = 189+61.25  
 P.T. STA = 193+14.66

MATCH LINE STA 189+00  
 SEE SHEET 85

MATCH LINE STA 194+00  
 SEE SHEET 87



FILE NAME: c:\p\proj\080319108\cont\act\1\Design\Proposed\Plan\0264884-shr-plan-41stAveDr\_82.dgn

**Ciorba Group, Inc.**  
 CONSULTING ENGINEERS  
 6507 North Cumberland Avenue, Suite 402  
 Chicago, Illinois 60656  
 Tel. 773.775.4009 Fax 773.775.4014

USER NAME = nthumb	DESIGNED -	REVISED - ADDENDUM 1 8/15/2013
	DRAWN -	REVISED -
PLOT SCALE = 48.0000 "/> <td>CHECKED -</td> <td>REVISED -</td>	CHECKED -	REVISED -
PLOT DATE = 8/14/2013	DATE - 8/14/2013	REVISED -

STATE OF ILLINOIS  
 DEPARTMENT OF TRANSPORTATION

41ST AVENUE DRIVE  
 PROPOSED PLAN

SCALE: SHEET NO. OF SHEETS STA. TO STA.

F.A.P. RTE.	SECTION	COUNTY	TOTAL SHEETS	SHEET NO.
595	(142-1)R & 142-1)B	ROCK ISLAND	507	86
CONTRACT NO. 64B84				
ILLINOIS FED. AID PROJECT				