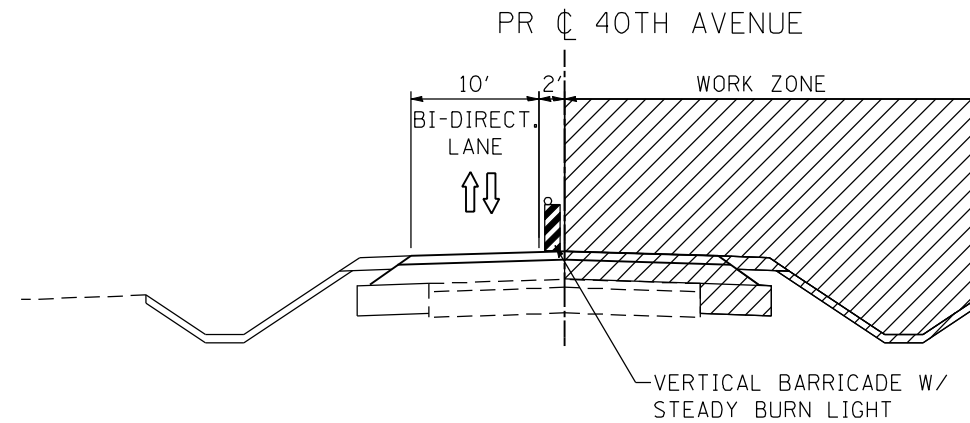


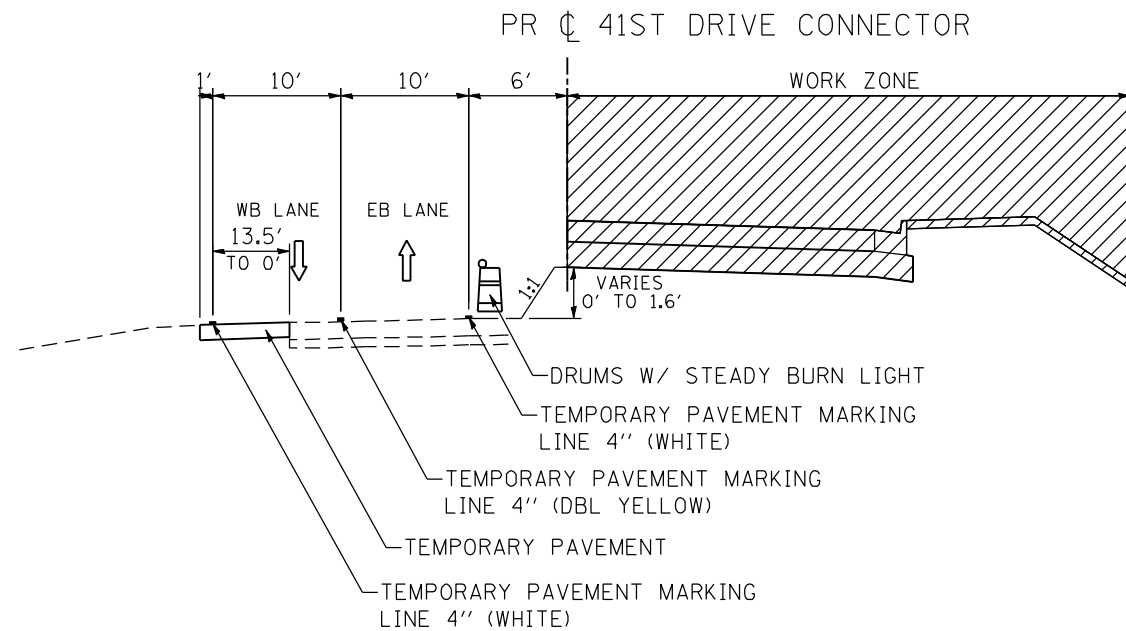
**40TH AVENUE
STAGE 3A**
STA 131+35.0 TO STA 134+50.0



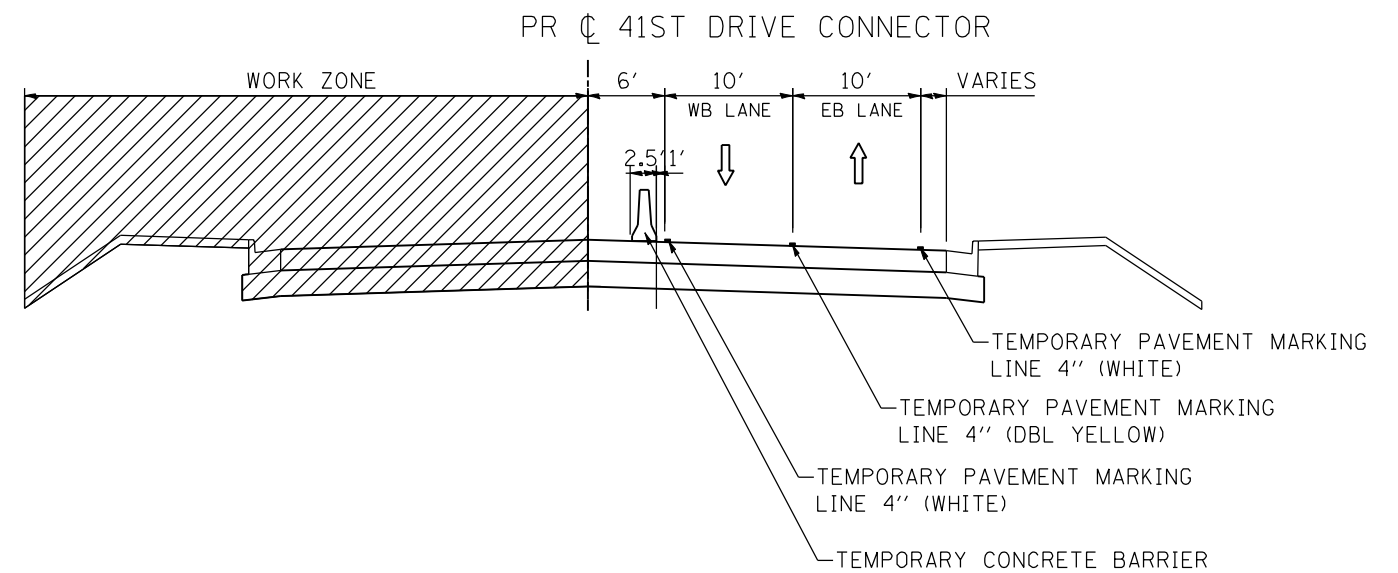
**40TH AVENUE
STAGE 3B**
STA 131+35.0 TO STA 134+50.0

CONTRACTOR SHALL MAINTAIN AN ADEQUATE LANE WIDTH FOR TRAFFIC IN AREAS WHERE THE SEPERATION BETWEEN THE WORKZONE AND BI-DIRECTIONAL TRAVEL LANE IS 0'.

STA 134+50.0 TO STA 136+97.3
FULL WIDTH OF ROADWAY TO BE CONSTRUCTED AT ONE TIME IN STAGE 2.



**41ST DRIVE CONNECTOR
STAGE 4**
STA 537+20.0 TO STA 540+65.5



**41ST DRIVE CONNECTOR
STAGE 5**
STA 537+20.0 TO STA 540+65.5

FILE NAME = c:\p\proj\080313\08\cont\act\1\Design\MOT\1\figica_Section\0264B84-sh1-MOT-11P01.dgn

| | | |
|--|------------------|--------------------------------|
| USER NAME = ntumbv | DESIGNED - | REVISED - ADDENDUM 1 8/15/2013 |
| PLOT SCALE = 15.0000 "/td> <td>CHECKED -</td> <td>REVISED -</td> | CHECKED - | REVISED - |
| PLOT DATE = 8/14/2013 | DATE - 8/14/2013 | REVISED - |

| | | | |
|---|-----------|-----------|--------------|
| MAINTENANCE OF TRAFFIC TYPICAL PROPOSED 40TH AVENUE / 41ST DRIVE CONNECTOR | | | |
| SCALE: | SHEET NO. | OF SHEETS | STA. TO STA. |

| | | | | |
|---------------------------|--------------------|-------------|--------------|-----------|
| F.A.P. RTE. | SECTION | COUNTY | TOTAL SHEETS | SHEET NO. |
| 595 | (142-1)R & 142-1)B | ROCK ISLAND | 507 | 118 |
| CONTRACT NO. 64B84 | | | | |
| ILLINOIS FED. AID PROJECT | | | | |