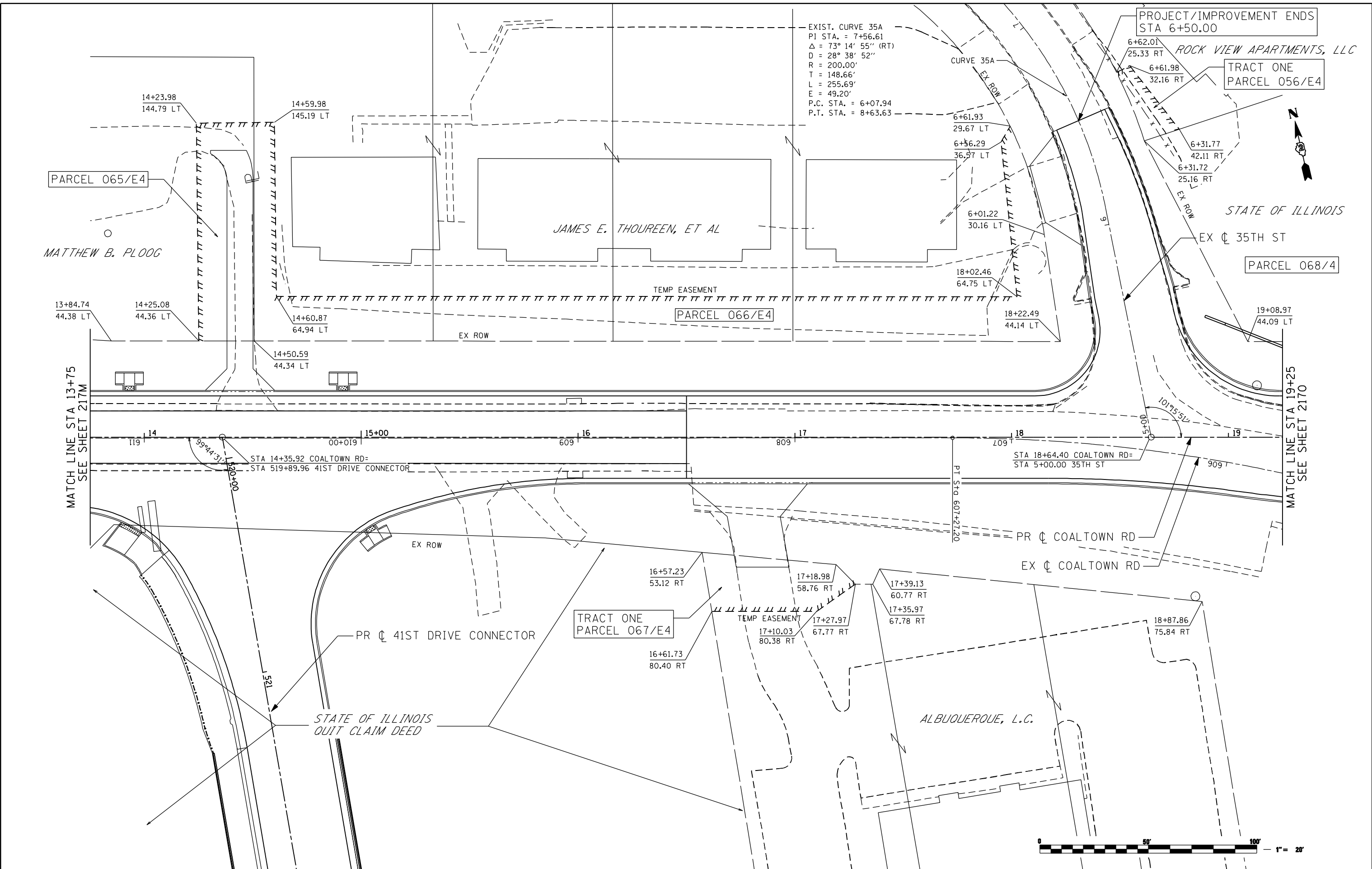


FILE NAME: c:\p\proj\080313\08\contract\1\design\right-of-way\0264884-ant-rdw-plan-ctr\_02.dgn



EXIST. CURVE 35A  
 PI STA. = 7+56.61  
 $\Delta = 73^\circ 14' 55''$  (RT)  
 $D = 28^\circ 38' 52''$   
 $R = 200.00'$   
 $T = 148.66'$   
 $L = 255.69'$   
 $E = 49.20'$   
 P.C. STA. = 6+07.94  
 P.T. STA. = 8+63.63

PROJECT/IMPROVEMENT ENDS  
 STA 6+50.00

PARCEL 065/E4

JAMES E. THOUREN, ET AL

PARCEL 066/E4

TRACT ONE  
 PARCEL 056/E4

STATE OF ILLINOIS

PARCEL 068/4

MATCH LINE STA 13+75  
 SEE SHEET 217M

MATCH LINE STA 19+25  
 SEE SHEET 217O

STA 14+35.92 COALTOWN RD=  
 STA 519+89.96 41ST DRIVE CONNECTOR

STA 18+64.40 COALTOWN RD=  
 STA 5+00.00 35TH ST

TRACT ONE  
 PARCEL 067/E4

ALBUQUERQUE, L.C.

STATE OF ILLINOIS  
 QUIT CLAIM DEED



**Ciorba Group, Inc.**  
 CONSULTING ENGINEERS  
 6507 North Cumberland Avenue, Suite 402  
 Chicago, Illinois 60656  
 Tel. 773.776.4009 Fax 773.776.4014

USER NAME = ntumbv	DESIGNED -	REVISED - ADDENDUM 1 8/15/2013
	DRAWN -	REVISED -
PLOT SCALE = 48.0000" / IN.	CHECKED -	REVISED -
PLOT DATE = 8/15/2013	DATE - 8/15/2013	REVISED -

STATE OF ILLINOIS  
 DEPARTMENT OF TRANSPORTATION

COALTOWN ROAD  
 ROW PLANS

SCALE: SHEET NO. OF SHEETS STA. TO STA.

F.A.P. RTE.	SECTION	COUNTY	TOTAL SHEETS	SHEET NO.
595	(142-1)R & 142-1)B	ROCK ISLAND	507	217N
CONTRACT NO. 64B84				
ILLINOIS FED. AID PROJECT				