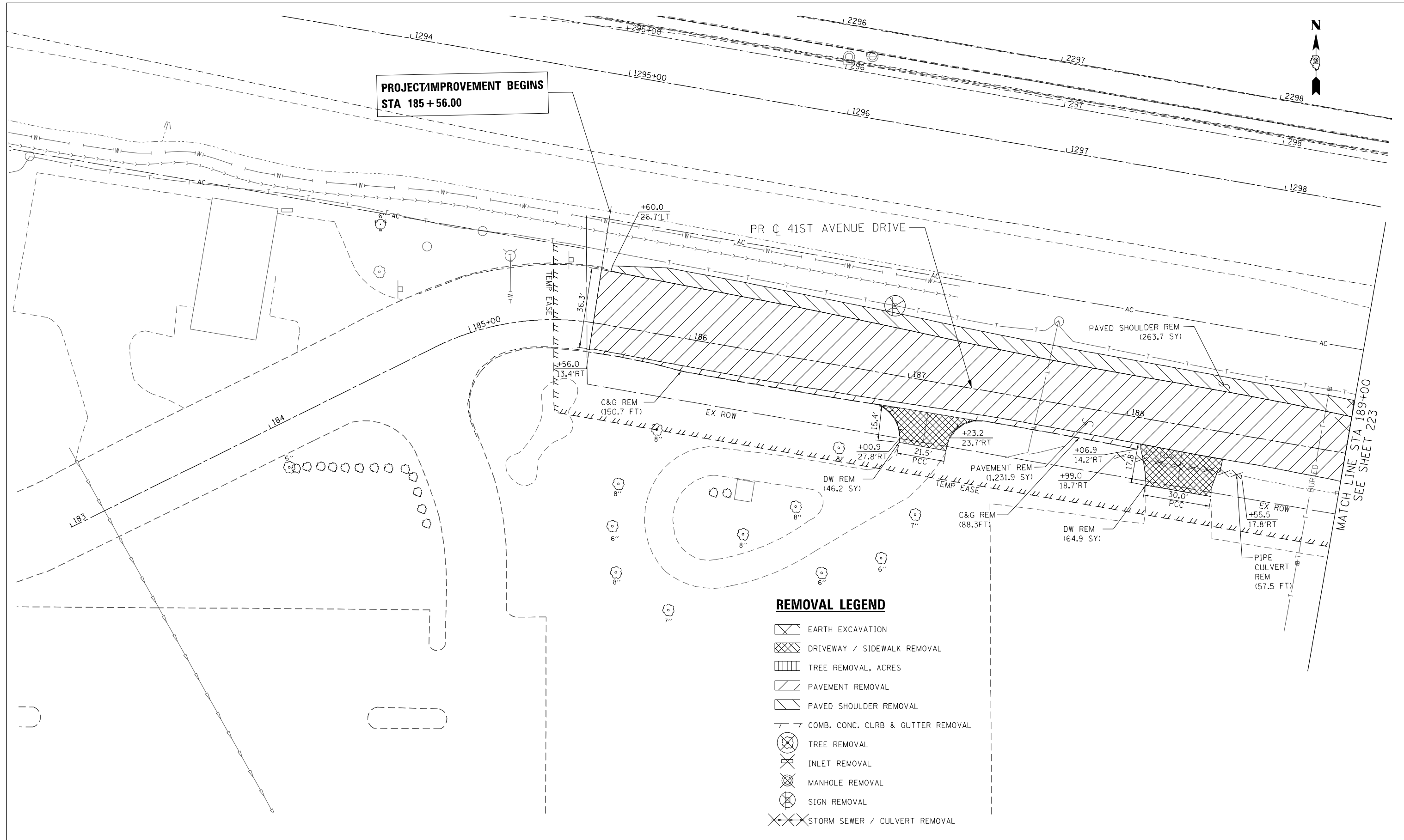




**PROJECT IMPROVEMENT BEGINS  
STA 185+56.00**



MATCH LINE STA 189+00  
SEE SHEET 223

**REMOVAL LEGEND**

- EARTH EXCAVATION
- DRIVEWAY / SIDEWALK REMOVAL
- TREE REMOVAL, ACRES
- PAVEMENT REMOVAL
- PAVED SHOULDER REMOVAL
- COMB. CONC. CURB & GUTTER REMOVAL
- TREE REMOVAL
- INLET REMOVAL
- MANHOLE REMOVAL
- SIGN REMOVAL
- STORM SEWER / CULVERT REMOVAL



REM-05



2600 Warrenville Road, Suite 203, Downers Grove, IL 60515  
630.705.0110 voice, 630.839.2566 fax  
www.mps-il.com  
**MILLENNIA PROFESSIONAL SERVICES**

|                  |           |
|------------------|-----------|
| DESIGNED - TVN   | REVISED - |
| DRAWN - CJD      | REVISED - |
| CHECKED - RPD    | REVISED - |
| DATE - 3/11/2013 | REVISED - |

**STATE OF ILLINOIS  
DEPARTMENT OF TRANSPORTATION**

**41ST AVENUE DRIVE  
REMOVAL PLAN**

SCALE: 1"=20' SHEET NO. 1 OF 3 SHEETS STA. 185+56.00 TO STA. 189+00.00

| F.A.P. RTE.                                       | SECTION             | COUNTY      | TOTAL SHEETS | SHEET NO. |
|---|---------------------|-------------|--------------|-----------|
| 595   | (142-1JR & 142-1HB) | ROCK ISLAND | 507          | 222       |
| CONTRACT NO. 64B84                                |                     |             |              |           |
| FED. ROAD DIST. NO. 1 [ILLINOIS] FED. AID PROJECT |                     |             |              |           |

P:\2011\ME11008.PT\155-26.IL5.JDR.Ciorba\CADD\Shets\0264B84-sht-rem05\_41stAveDr-01.dgn