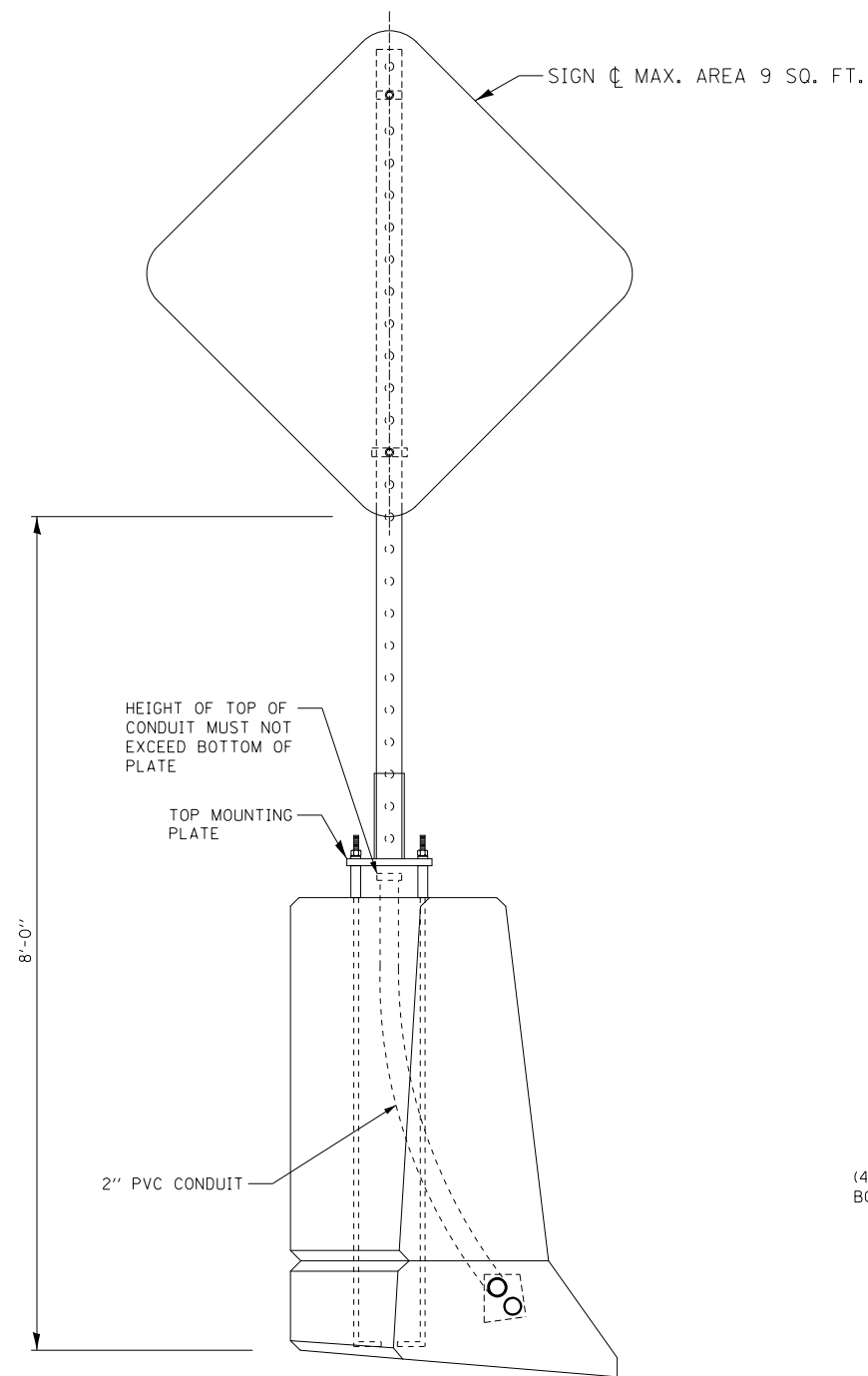


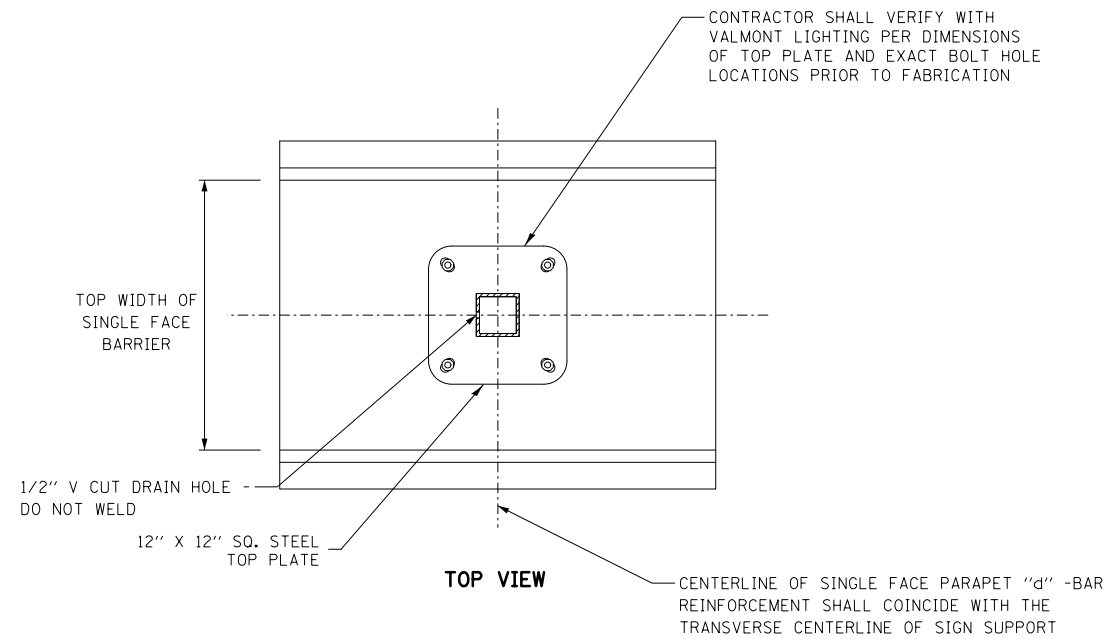
**NOTES:**

1. PLATE SHALL BE GALVANIZED AFTER FABRICATION.
2. CONTRACTOR SHALL FIELD VERIFY THE LENGTH OF THE CONDUIT PROTRUDING OUT FROM THE CONCRETE BARRIER AND ADJUST THE LENGTH OF THE METAL SPACERS AND THE SIGN POST ACCORDINGLY SUCH THAT THE BOTTOM OF THE SIGN PANEL IS AT 8'-0" FROM THE EDGE OF THE MULTI-USE PATH.
3. ALL WELDED PLATES, METAL SPACERS, AND OTHER APPURTENANCES AS SHOWN IN THE DETAILS SHALL BE INCLUDED IN THE COST FOR "TELESCOPING STEEL SIGN SUPPORT (SPECIAL)."

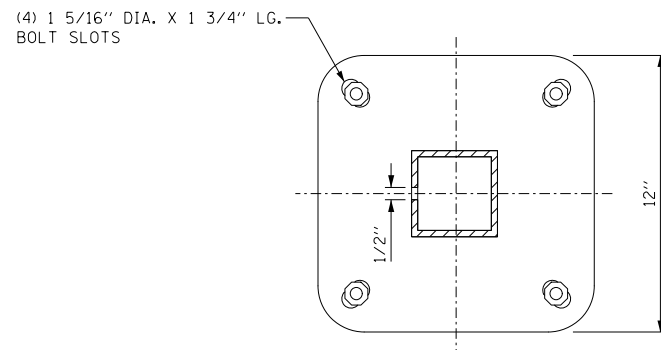


TYPICAL SECTION

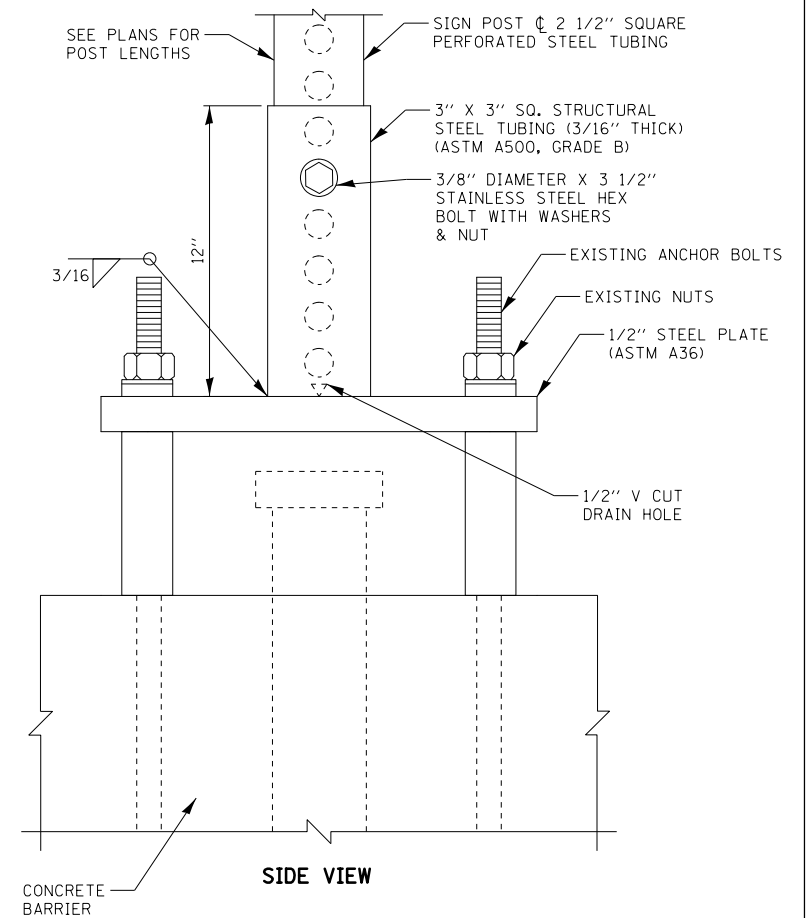
LIGHT POLE BASE MOUNTED SIGN SUPPORT



TOP VIEW

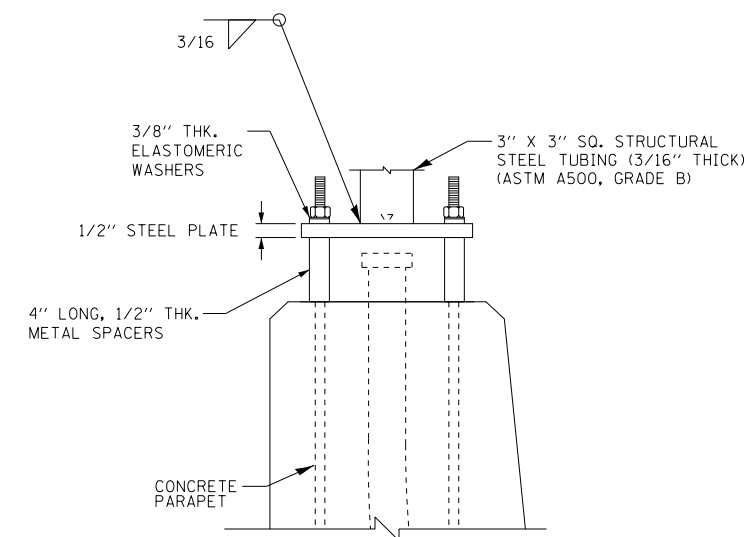


TOP MOUNTING PLATE DETAIL



SIDE VIEW

LIGHT POLE BASE MOUNTING PLATE



END VIEW

LIGHT POLE BASE MOUNTING PLATE

SEE NOTE 2

USER NAME = Plotted by LinZl	DESIGNED - RC	REVISED -
	DRAWN - RC	REVISED -
PLOT SCALE = 41.6666 1/16\" in.	CHECKED - ST	REVISED -
PLOT DATE = 3/11/2013	DATE - 3/11/2013	REVISED -

F.A.P. RTE.	SECTION	COUNTY	TOTAL SHEETS	SHEET NO.
595	(142-11R-1, 142-11B)	ROCK ISLAND	507	265
CONTRACT NO. 64B84				
FED. ROAD DIST. NO. 2 ILLINOIS FED. AID PROJECT				