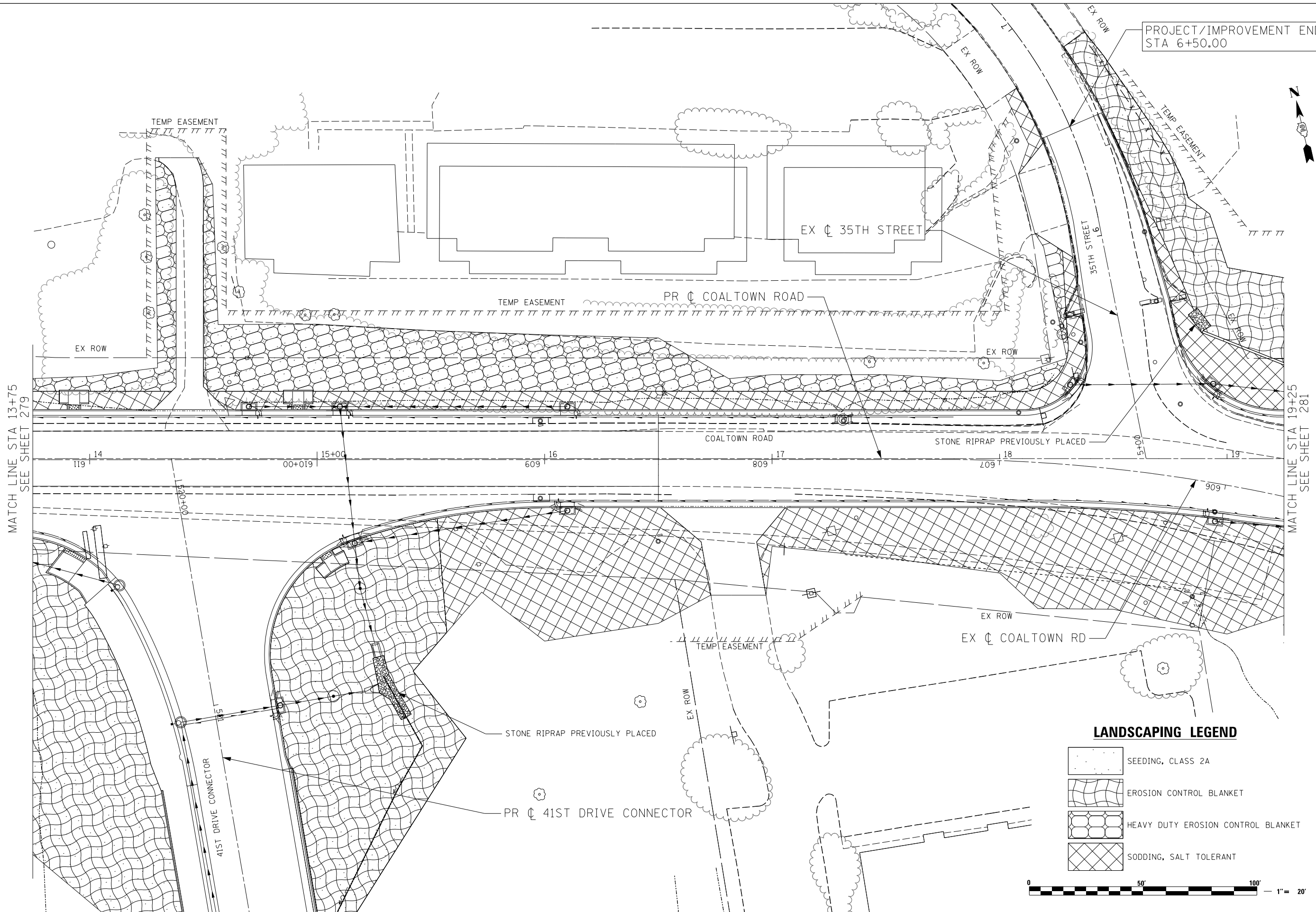


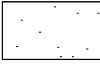
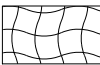


PROJECT/IMPROVEMENT ENDS
STA 6+50.00

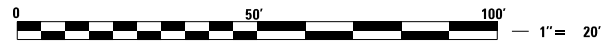



MATCH LINE STA 13+75
SEE SHEET 279

MATCH LINE STA 19+25
SEE SHEET 281

LANDSCAPING LEGEND

-  SEEDING, CLASS 2A
-  EROSION CONTROL BLANKET
-  HEAVY DUTY EROSION CONTROL BLANKET
-  SODDING, SALT TOLERANT



 LIN ENGINEERING, LTD. Consulting Engineers Springfield, Illinois	USER NAME = Plotted by Chris Venette	DESIGNED - RWK	REVISED - ADDENDUM 1 - 8/15/2013
	PLOT SCALE = 40.0000' / in.	DRAWN - RWK	REVISED -
	PLOT DATE = 8/13/2013	CHECKED - ST	REVISED -
		DATE - 8/13/2013	REVISED -

**STATE OF ILLINOIS
DEPARTMENT OF TRANSPORTATION**

COALTOWN ROAD PERMANENT EROSION CONTROL AND LANDSCAPING PLANS		
SCALE: 1"=20'	SHEET NO. 14 OF 17 SHEETS	STA. 13+75 TO STA. 19+25

F.A.P. RTE.	SECTION	COUNTY	TOTAL SHEETS	SHEET NO.
595	(142-11R-1, 142-11B)	ROCK ISLAND	507	280
CONTRACT NO. 64B84				
FED. ROAD DIST. NO. 2 ILLINOIS FED. AID PROJECT				