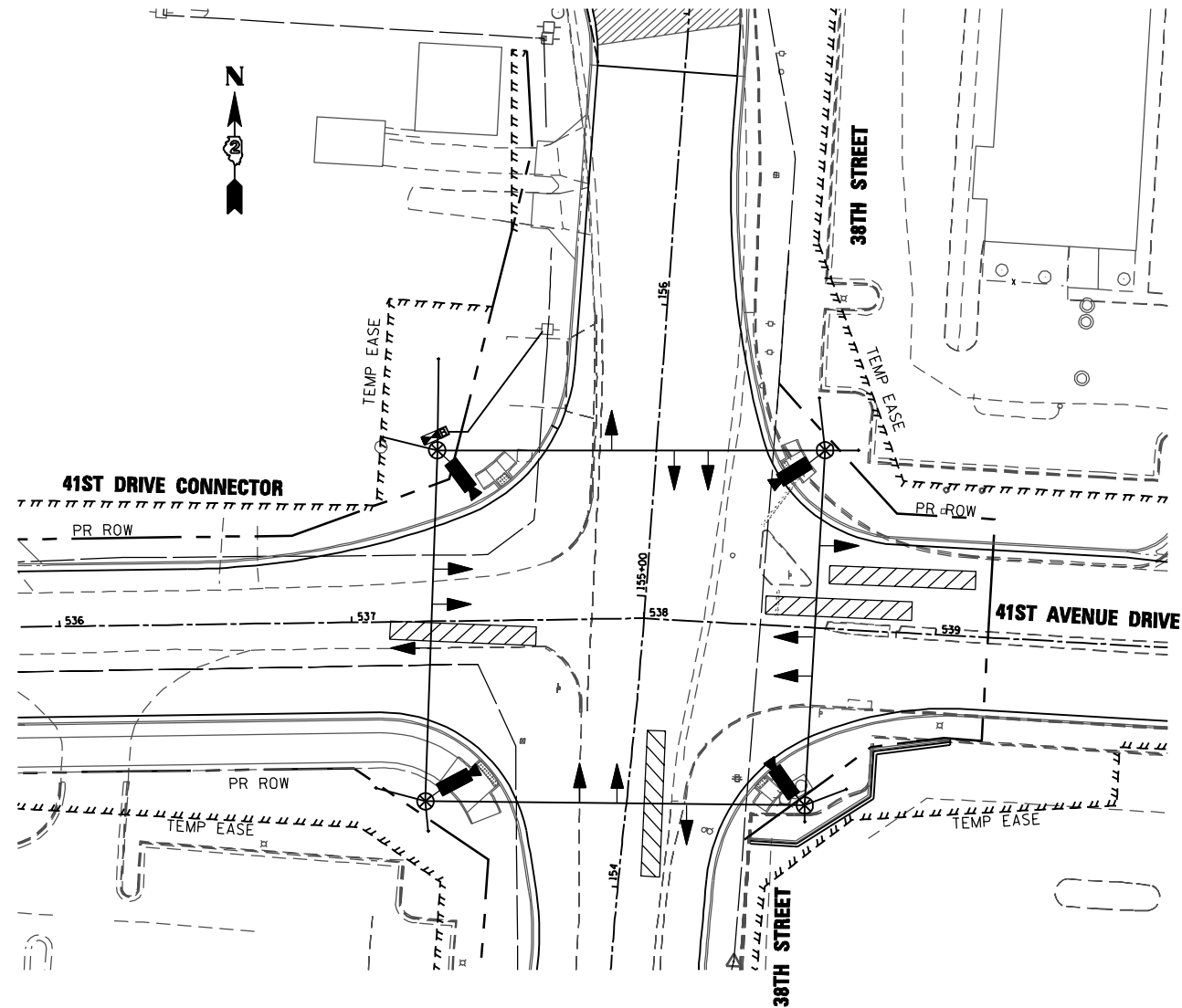


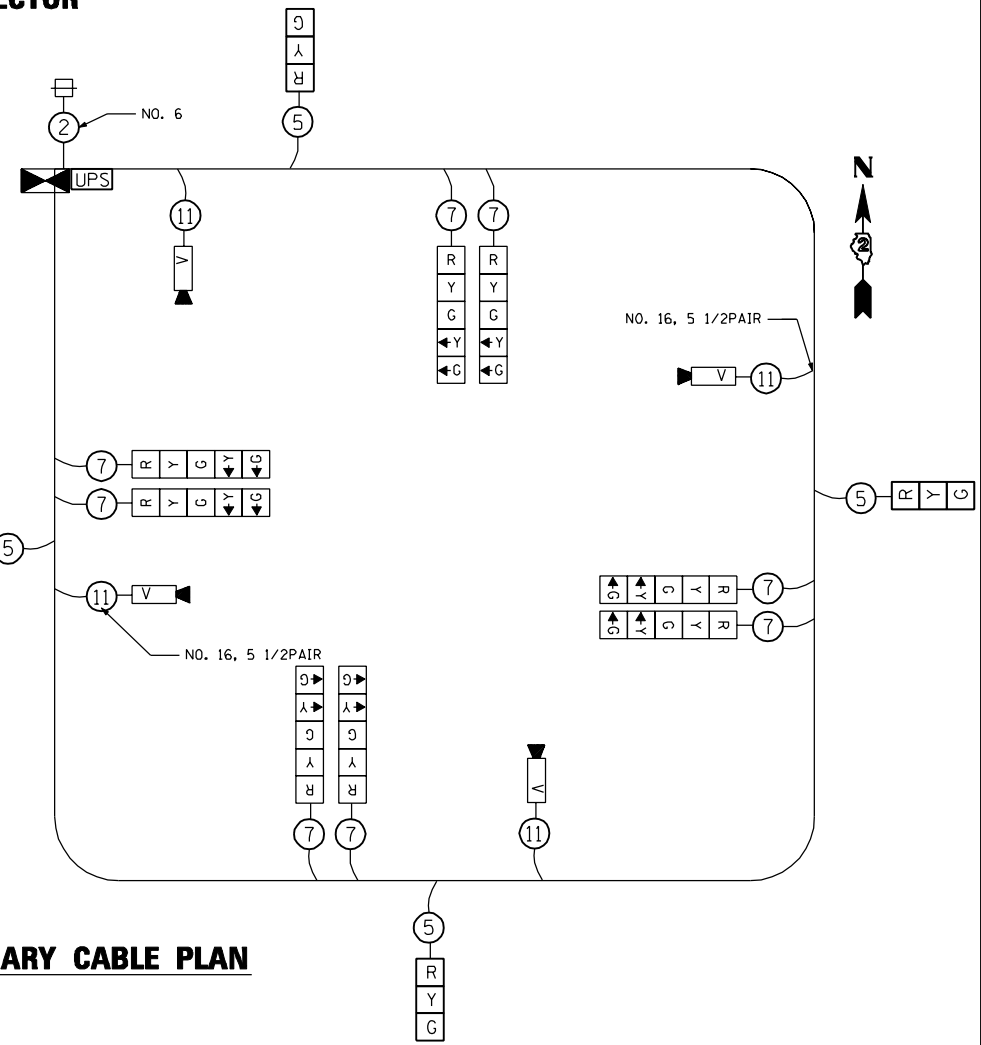
SUGGESTED TEMPORARY SIGNAL PLAN

38TH STREET AT 41ST DRIVE CONNECTOR

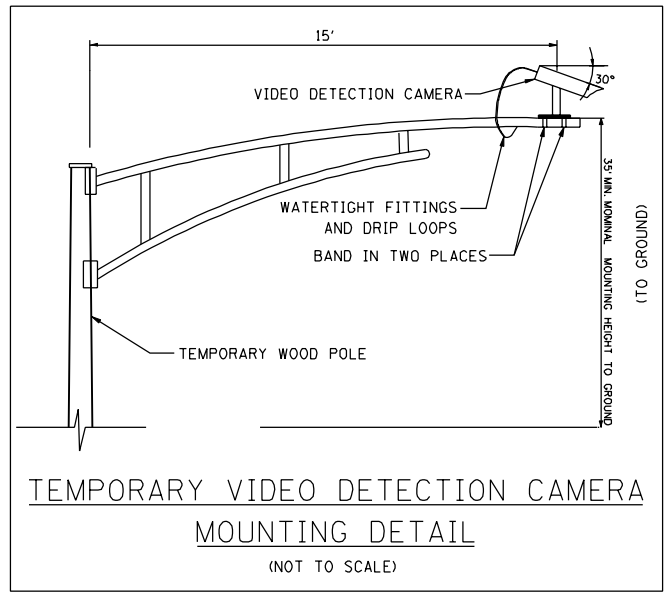


- TEMPORARY TRAFFIC SIGNAL LEGEND**
- ◀ TEMPORARY TRAFFIC SIGNAL HEAD
SPAN WIRE MOUNTED ORIGINAL LOCATION
 - ⊗ TEMPORARY WOOD POLE (CLASS 5 OR BETTER) 45 FOOT (13.7m) MINIMUM
 - ▣ TEMPORARY CONTROLLER CABINET
 - TEMPORARY SPAN WIRE, TETHER WIRE, AND CABLE
 - ⊞ TEMPORARY SERVICE INSTALLATION
 - 📹 VIDEO VEHICLE DETECTION CAMERA
 - ▨ TEMPORARY VIDEO DETECTION ZONE (50' TYPICAL)
 - ⊞ UNINTERRUPTIBLE POWER SUPPLY

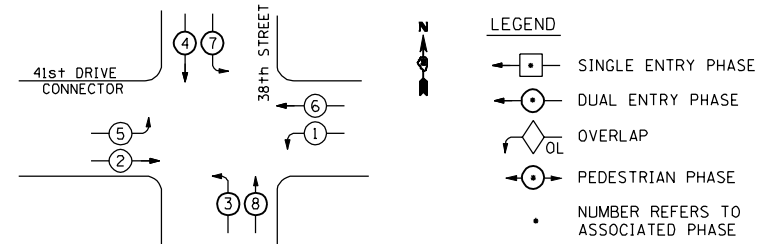
- TEMPORARY CABLE DIAGRAM LEGEND**
- ⊞ TEMPORARY TRAFFIC SIGNAL SECTION OR PEDESTRIAN SIGNAL SECTION 12" (300mm)
 - ▣ TEMPORARY CONTROLLER CABINET
 - ② INDICATES NUMBER OF CONDUCTORS IN CABLE. ALL CONDUCTORS TO BE NUMBER 14 AWG WIRE UNLESS OTHERWISE NOTED.
 - ⊞ TEMPORARY SERVICE INSTALLATION
 - 📹 VIDEO VEHICLE DETECTION CAMERA
 - T TELEPHONE CONNECTION
 - ⊞ TEMPORARY RADIO INTERCONNECT
 - UPS UNINTERRUPTIBLE POWER SUPPLY



TEMPORARY CABLE PLAN



TEMPORARY CONTROLLER SEQUENCE



PHASE DESIGNATION DIAGRAM

- NOTES**
1. ONLY AN APPROVED IDOT ELECTRICAL SUBCONTRACTOR WILL BE PERMITTED TO INSTALL AND ADJUST VIDEO VEHICLE DETECTION SYSTEM AS REQUIRED BY STAGE/PHASE CHANGES.
 2. STAGING OF TEMPORARY SIGNAL INSTALLATION SHALL BE APPROVED BY THE RESIDENT ENGINEER.
 3. STAGE 3B SOUTHBOUND 38TH STREET SHALL BE A CONTINUOUS FREE FLOW.