

TRAFFIC SIGNAL LEGEND

ITEM	EXISTING	PROPOSED
CONTROLLER CABINET		
UNINTERRUPTIBLE POWER SUPPLY		
SERVICE INSTALLATION, (P) POLE OR (G) GROUND MOUNT		
TELEPHONE CONNECTION (P) POLE OR (G) GROUND MOUNT		
SIGNAL POST		
SIGNAL HEAD		
SIGNAL HEAD WITH BACKPLATE		
PEDESTRIAN SIGNAL HEAD		
PEDESTRIAN PUSHBUTTON DETECTOR		
DETECTOR LOOP, TYPE I		
PERFORMED DETECTOR LOOP		
VIDEO DETECTION CAMERA		
STEEL MAST ARM ASSEMBLY AND POLE		
STEEL COMBINATION MAST ARM ASSEMBLY AND POLE WITH LUMINAIRE LED COBRA HEAD MOUNTED IN LINE WITH MAST ARM		
HANDHOLE		
HEAVY DUTY HANDHOLE		
DOUBLE HANDHOLE		
JUNCTION BOX		
GALVANIZED STEEL CONDUIT (UNDERGROUND CONDUIT)		
STREET SIGN		
DETECTION ZONE (MAGNETOMETER SENSOR)		
COILABLE NON-METALLIC CONDUIT		

GENERAL NOTES

- IT SHALL BE THE CONTRACTORS RESPONSIBILITY TO VERIFY ALL DIMENSIONS AND CONDITIONS EXISTING IN THE FIELD PRIOR TO ORDERING MATERIALS AND BEGINNING CONSTRUCTION. THIS SHALL INCLUDE LOCATING THE MAST ARM FOUNDATIONS AND VERIFYING THE MAST ARMS LENGTHS.
- THE EXACT LOCATION OF ALL UTILITIES SHALL BE FIELD VERIFIED BY THE CONTRACTOR BEFORE ORDERING ANY MATERIALS AND STARTING ANY WORK. FOR LOCATIONS OF UTILITIES, LOCALLY OWNED EQUIPMENT, LEASED ENFORCEMENT CAMERA SYSTEM FACILITIES AND IDOT UNDERGROUND FACILITIES, CONTACT THE LOCAL COUNTIES, MUNICIPALITIES AND IDOT FOR LOCATES. THE CONTRACTOR SHALL CALL 'JULIE' AT (800) 892-0123 FOR FIELD LOCATIONS OF BURIED UTILITIES (48 HOURS NOTIFICATION REQUIRED).
- THE CONTRACTOR SHALL CHECK THE PROPOSED TRAFFIC SIGNAL EQUIPMENT LOCATIONS FOR OVERHEAD UTILITY CONFLICTS. THE CONTRACTOR SHALL COORDINATED ANY CONFLICTS WITH THE UTILITY COMPANIES AND THE RESIDENT ENGINEER BEFORE ORDERING MATERIALS.
- THE CONTRACTOR SHALL COORDINATE CONSTRUCTION ACTIVITIES WITH UTILITY COMPANIES, LOCAL GOVERNMENT AGENCIES AND IDOT.

JUNCTION BOX, STAINLESS STEEL,
EMBEDDED IN STRUCTURE
12" x 10" x 6" (TYP)

530+23.80, 22.7' LT
24' MA (SEE STRUCTURE PLANS
FOR CONC. FOUNDATION)

3'-CNC
2" BETWEEN HH TO SIGNAL FND

HANDHOLE (SPECIAL), (TYP)
SEE DETAIL

78' CONDUIT EMBEDDED
IN STRUCTURE, PVC 2" DIA

4'-CNC
2" BETWEEN HH TO SIGNAL FND

530+96.80, 23.2' LT
24' MA (SEE STRUCTURE PLANS
FOR CONC. FOUNDATION)

9'-CNC
2"

80'-CNC
4"

531+13.9, 57.0' RT
46' MA, 21' CONC FND
TYPE E, 42" DIA

531+24.6
59.1' RT

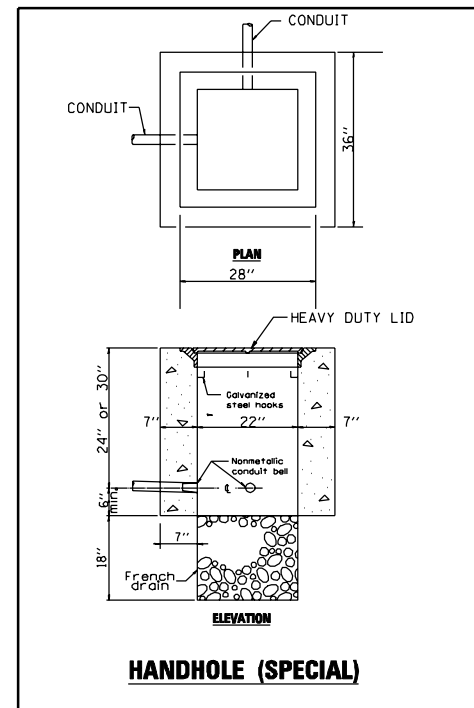
6'-CNC
3"

40'-CNC
2"

530+30.6, 61.2' RT
16' POST

6'-CNC
2 1/2"

64'-CNC
3"



HANDHOLE (SPECIAL)

2600 Warrenville Road, Suite 203, Downers Grove, IL 60515
630.705.0110 voice, 630.839.3566 fax
www.mps-il.com

MILLENNIA PROFESSIONAL SERVICES

DESIGNED - TVN	REVISED -
DRAWN - CJD	REVISED -
CHECKED - RPD	REVISED -
DATE - 3/11/2013	REVISED -

**STATE OF ILLINOIS
DEPARTMENT OF TRANSPORTATION**

TRAFFIC SIGNAL PLAN			
41ST DRIVE CONNECTOR AND 40TH AVENUE			
SCALE: 1=20	SHEET NO. OF SHEETS	STA. TO STA.	

F.A.P. RTE.	SECTION	COUNTY	TOTAL SHEETS	SHEET NO.
595	(142-1JR & 142-1HB)	ROCK ISLAND	507	294
CONTRACT NO. 64B84				
FED. ROAD DIST. NO. 1 ILLINOIS FED. AID PROJECT				

TS-21

P:\2011\ME11008.PT155-26.IL5.JDR.Ciorba\CAADD\Shets\0264B84-sh1-TS21.41DR.48Ave.dgn