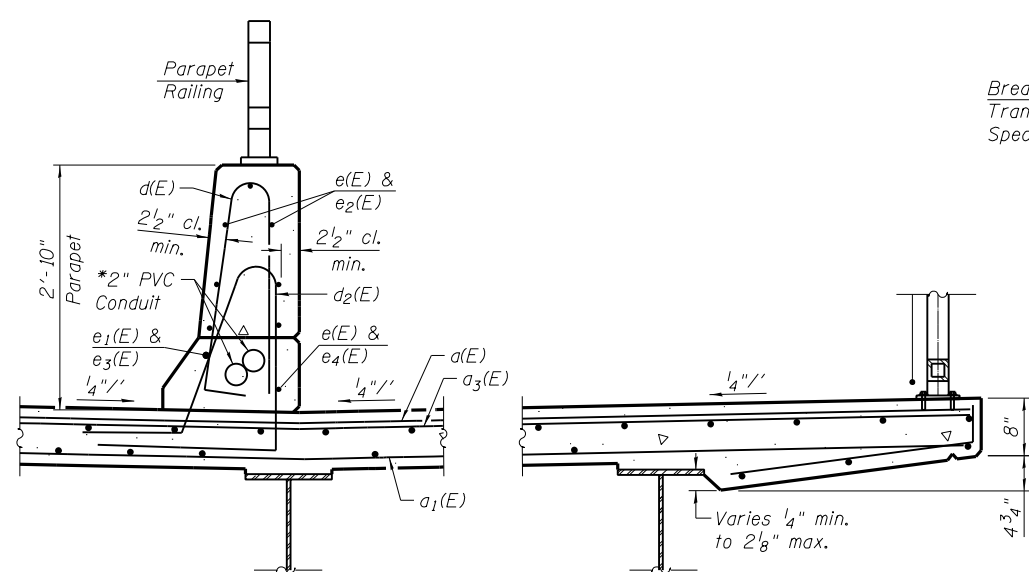
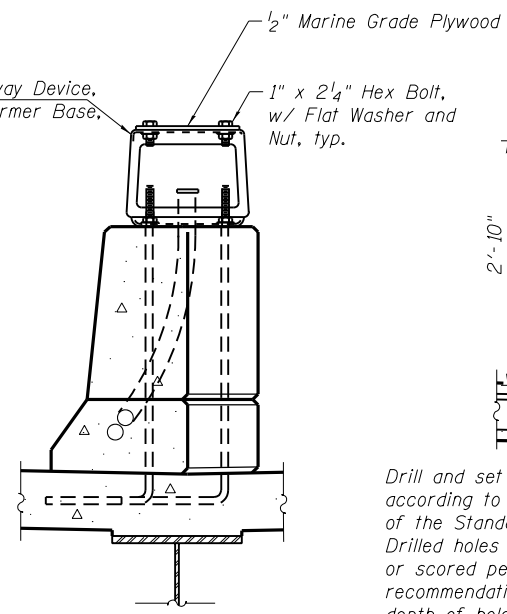


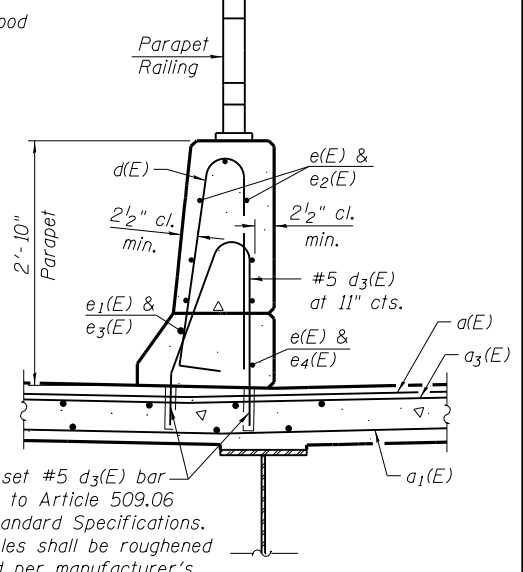
SECTION THRU EAST PARAPET



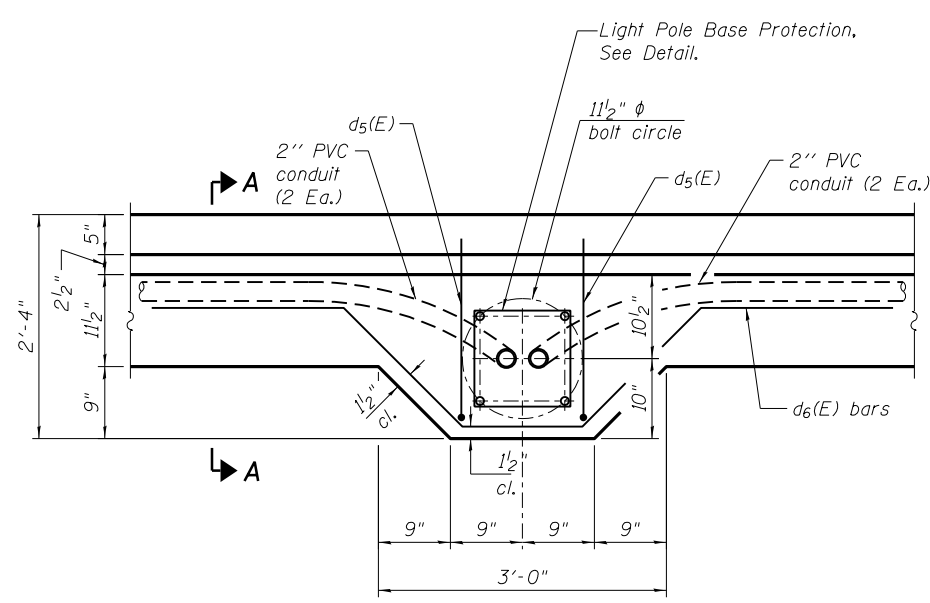
SECTION THRU WEST PARAPET



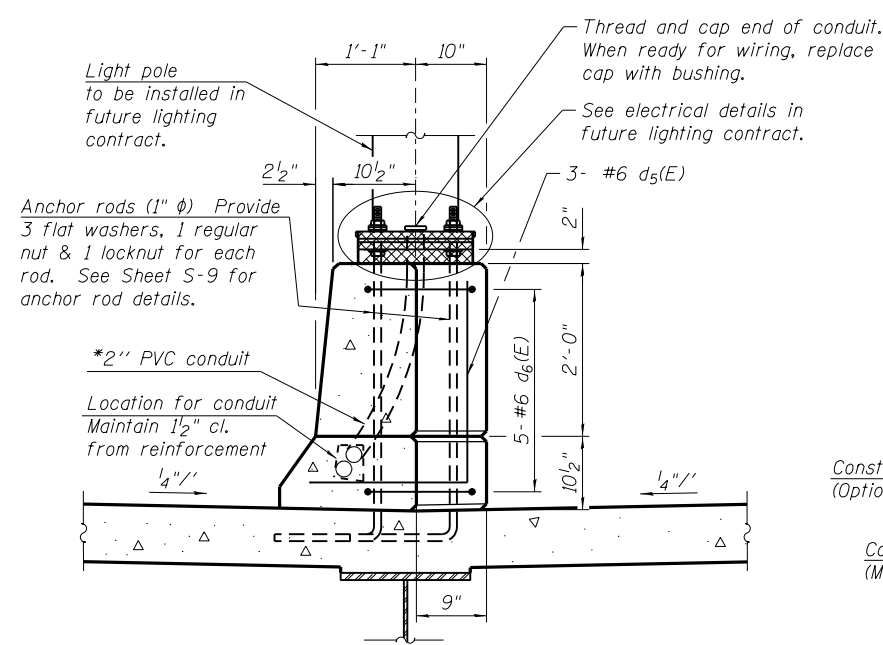
LIGHT POLE BASE PROTECTION DETAIL (3 Thus)



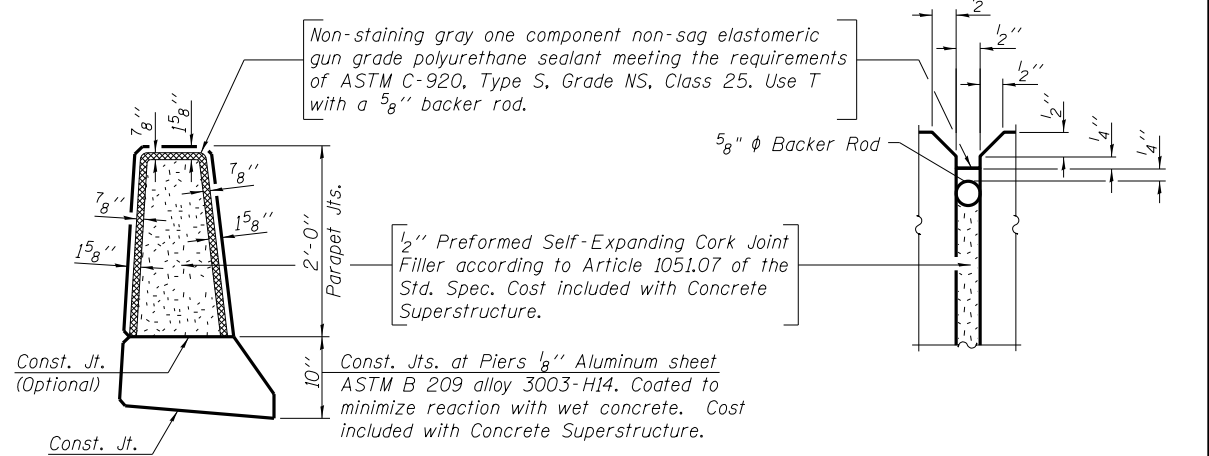
ALTERNATE SECTION THRU WEST PARAPET



LIGHT POLE BASE DETAIL



SECTION A-A



PARAPET JOINT DETAILS

- NOTES:**
1. Work this sheet with sheets S-7 and S-9.
 2. Bars indicated thus 1x2 #5 etc. indicates 1 line of bars with 2 lengths per line.
 3. Reinforcement bars shall not pass thru aluminum sheets and cork joint filler.

* Conduit Embedded in Structure, 2" Dia., PVC. (2 Ea.)

I:\PROJECTS\030333\CONTRACT_1\Design\Structure\1\0176-D264864-08-Superstructure_Details_1.dgn
 C:\PROG1\000333\CONTRACT_1\Design\Structure\1\0176-D264864-08-Superstructure_Details_1.dgn



USER NAME = mteng	DESIGNED - MHT	REVISED -
PLOT SCALE = 0:2.0000 1" = 10'	CHECKED - BWS	REVISED -
PLOT DATE = 3/11/2013	DRAWN - RD	REVISED -
	CHECKED - BWS	REVISED -

STATE OF ILLINOIS
DEPARTMENT OF TRANSPORTATION

SUPERSTRUCTURE DETAILS - 1
STRUCTURE NO. 081-0176
SHEET NO. S-8 OF S-27 SHEETS

F.A.P. RTE. 595	SECTION (142-11R & 142-11B)	COUNTY ROCK ISLAND	TOTAL SHEETS 507	SHEET NO. 307
				CONTRACT NO. 64B84

ILLINOIS FED. AID PROJECT