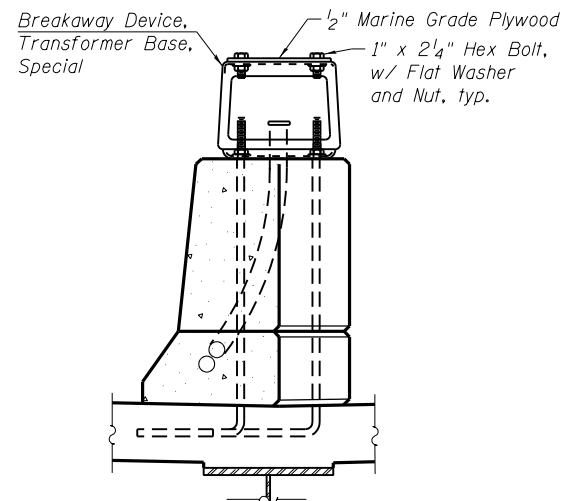
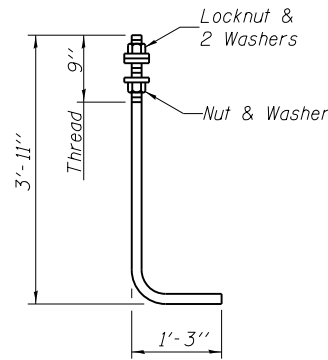


LIGHT POLE BASE DETAIL
(4 Thus)



LIGHT POLE BASE PROTECTION DETAIL
(3 Thus)
Not placed at Sta. 522+90

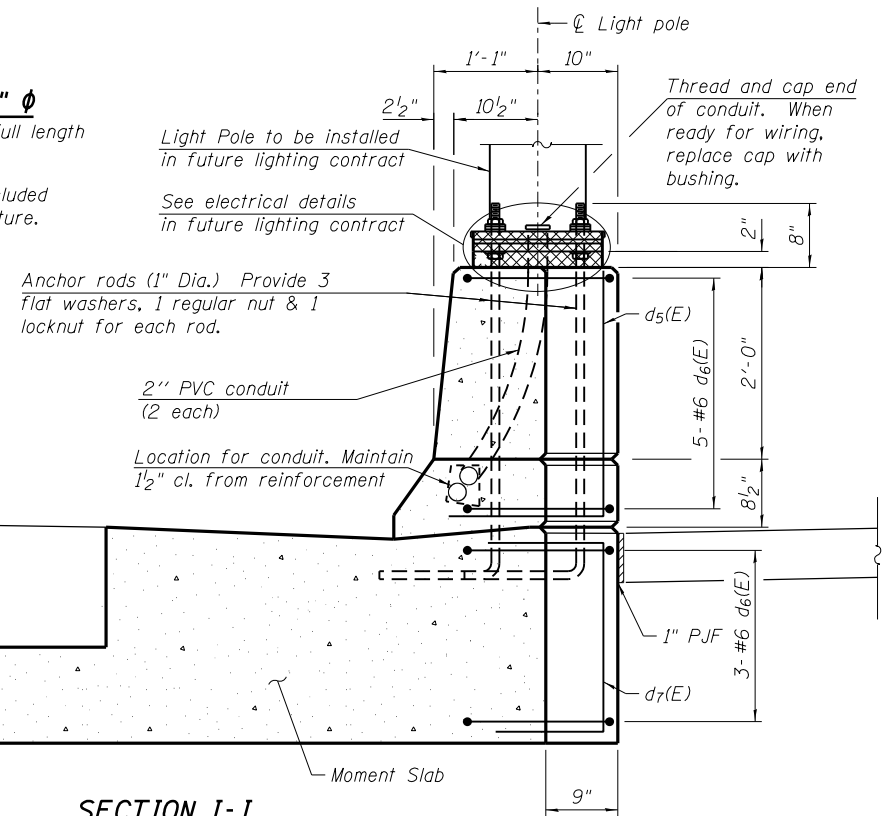
COPING DETAIL
Unfolded Elevation View



ANCHOR ROD - 1" phi
(ASTM F 1554 Grade 105) Full length hot dipped galvanized
Cost of anchor rods is included with concrete superstructure.

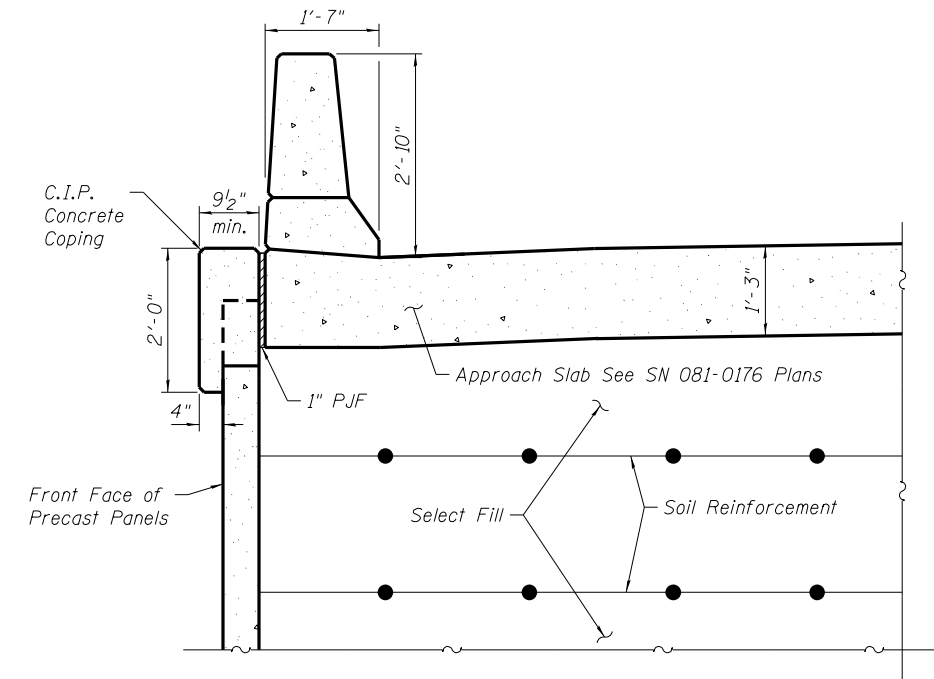
NOTES:

1. Concrete and Reinforcing Steel for Coping are included in the cost of Mechanically Stabilized Earth Retaining Wall.
2. For bar details see Sheet SA-11.
3. F.F. = Front Face, B.F. = Back Face

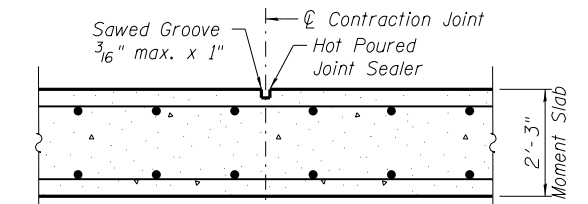


SECTION I-I
(West Moment Slab only)

SECTION K-K



SECTION H-H



TRANSVERSE CONTRACTION JOINT
See Art. 420.05(c) of Standard Specifications

Note:
Joints in the adjacent pavement shall be in-line with the moment slab joints.

N:\PROJECTS\00033333\CONTRACT\1\Design\Structure\CAD\Retaining Wall_081-7002\081-7002-10_Details-2.dgn



USER NAME = mteng
DESIGNED - APD
CHECKED - BWS
DRAWN - RD
CHECKED - BWS
PLOT SCALE = 2x0 5/8 '1' / 1"
PLOT DATE = 3/11/2013

DESIGNED - APD
CHECKED - BWS
DRAWN - RD
CHECKED - BWS
REVISIONS:

REVISIONS:

STATE OF ILLINOIS
DEPARTMENT OF TRANSPORTATION

DETAILS - 2
STRUCTURE NO. 081-7002

SHEET NO. SA-10 OF SA-16 SHEETS

F.A.P. RTE.	SECTION	COUNTY	TOTAL SHEETS	SHEET NO.
595	(142-1)R-1 AND 142-1HB	ROCK ISLAND	507	336
CONTRACT NO. 64B84				

ILLINOIS FED. AID PROJECT