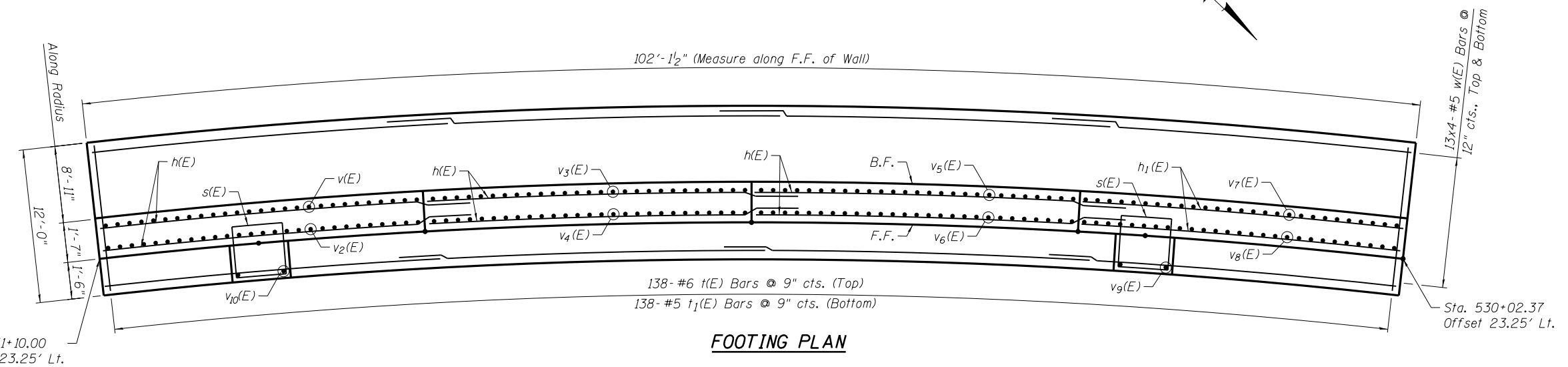


**ELEVATION**  
Looking at F.F. of Wall

- NOTES:**
1. Work this sheet with Sheet SB-16.
  2. For sections M-M & N-N, Bar Bending Details and Bill of Materials, see Sheet SB-16.
  3. Bars indicated thus 7x2-#5 etc. indicates 7 lines of bars with 2 lengths per line.
  4. Bend w(E), h(E) and h<sub>1</sub>(E) bars in field to match curve.
  5. F.F. = Front Face & B.F. = Back Face.



**FOOTING PLAN**

**MIN. BAR LAP**  
#5 bar = 3'-3"  
#4 bar = 2'-3"

N:\PROJ\0003393\CONTRACT\1\Design\Structure\CAD\Retaining Wall\081-7003\081-7003.15.CIP\_Retaining Wall\_Details\_1.dgn



USER NAME = mteng	DESIGNED - BWS	REVISED -
PLOT SCALE = 1/8" = 1' / in.	CHECKED - SMY	REVISED -
PLOT DATE = 3/11/2013	DRAWN - RD	REVISED -
	CHECKED - BWS	REVISED -

**STATE OF ILLINOIS  
DEPARTMENT OF TRANSPORTATION**

**CIP RETAINING WALL DETAILS 1  
STRUCTURE NO. 081-7003**

SHEET NO. SB-15 OF SB-21 SHEETS

F.A.P. RTE.	SECTION	COUNTY	TOTAL SHEETS	SHEET NO.
595	(142-11R-1 and 142-11B)	ROCK ISLAND	507	357
				CONTRACT NO. 64B84

ILLINOIS FED. AID PROJECT