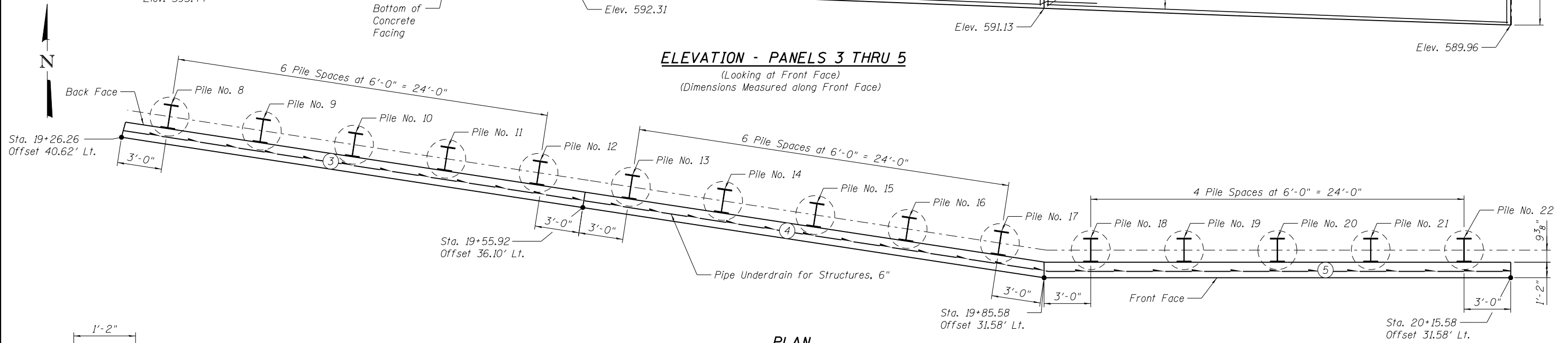
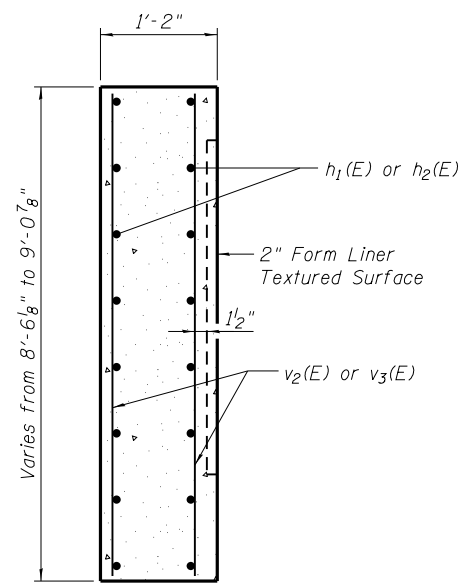


ELEVATION - PANELS 3 THRU 5

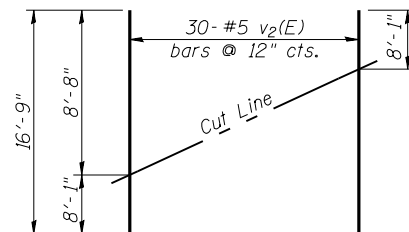
(Looking at Front Face)
(Dimensions Measured along Front Face)



PLAN



**SECTION THRU
CIP FACING**



FIELD CUTTING DIAGRAM

Order v2(E) full length. Cut as shown and use remainder of bars in opposite face.

LEGEND

- ⊕ = Panel Number
- E.F. = Each Face

Notes:
For Top of Pile Elevations & Pile Tip Elevations, see Soldier Pile Summary on Sheet SD-3 of SD-18.
Space reinforcement to miss shear studs.

BAR LIST

Bar	No.	Size	Length	Shape
h1(E)	20	#5	29'-9"	—
h2(E)	40	#5	33'-3"	—
v2(E)	30	#5	16'-9"	—
v3(E)	120	#5	8'-8"	—

MINIMUM BAR LAP

#5 bar = 3'-3"

(Sheet 2 of 10)