

NORTH CURB LINE

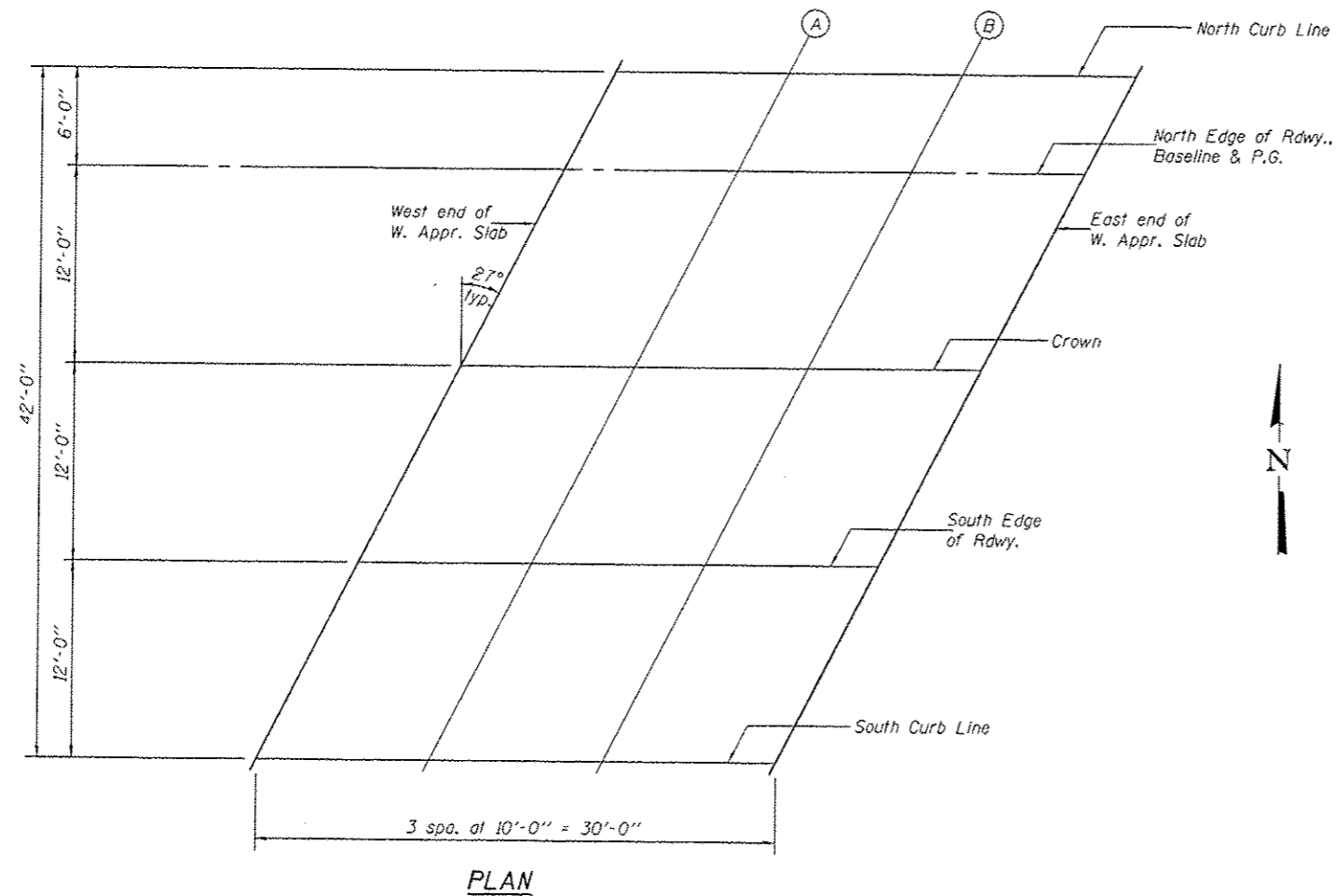
Location	Station	Offset	Theoretical Grade Elevations
West end of W. Appr. Slab	192002.51	-6.00	714.24
A	192012.51	-6.00	714.18
B	192022.51	-6.00	714.11
East end of W. Appr. Slab	192032.51	-6.00	714.05

NORTH EDGE OF RDWY., BASELINE & P.G.

Location	Station	Offset	Theoretical Grade Elevations
West end of W. Appr. Slab	191999.45	0.00	714.39
A	192009.45	0.00	714.32
B	192019.45	0.00	714.26
East end of W. Appr. Slab	192029.45	0.00	714.19

CROWN

Location	Station	Offset	Theoretical Grade Elevations
West end of W. Appr. Slab	191993.34	12.00	714.62
A	192003.34	12.00	714.55
B	192013.34	12.00	714.49
East end of W. Appr. Slab	192023.34	12.00	714.42



SOUTH EDGE OF RDWY.

Location	Station	Offset	Theoretical Grade Elevations
West end of W. Appr. Slab	191987.22	24.00	714.47
A	191997.22	24.00	714.40
B	192007.22	24.00	714.34
East end of W. Appr. Slab	192017.22	24.00	714.27

SOUTH CURB LINE

Location	Station	Offset	Theoretical Grade Elevations
West end of W. Appr. Slab	191981.11	36.00	714.26
A	191991.11	36.00	714.19
B	192001.11	36.00	714.13
East end of W. Appr. Slab	192011.11	36.00	714.06

DESIGNED - Nick R. Barnett	EXAMINED - <i>James F. Duff</i>	DATE - OCTOBER 4, 2013
CHECKED - Al-Barroo R. Shebib	PASSED - <i>Carl Perry</i>	REVISED
DRAWN - h.t. duong	ACTING ENGINEER OF BRIDGES AND STRUCTURES	REVISED
CHECKED - NRB/GRA		

STATE OF ILLINOIS
DEPARTMENT OF TRANSPORTATION

TOP OF WEST APPROACH SLAB ELEVATION (E.B.)
STRUCTURE NO. 101-0195 (E.B.) & 101-0196 (W.B.)

F.A.P. RTE.	SECTION	COUNTY	TOTAL SHEETS	SHEET NO.
301	30R & 30R-1	WINNEBAGO	290	112
CONTRACT NO. 64D19				
ILLINOIS FED. AID PROJECT				

SHEET NO. 13 OF 55 SHEETS