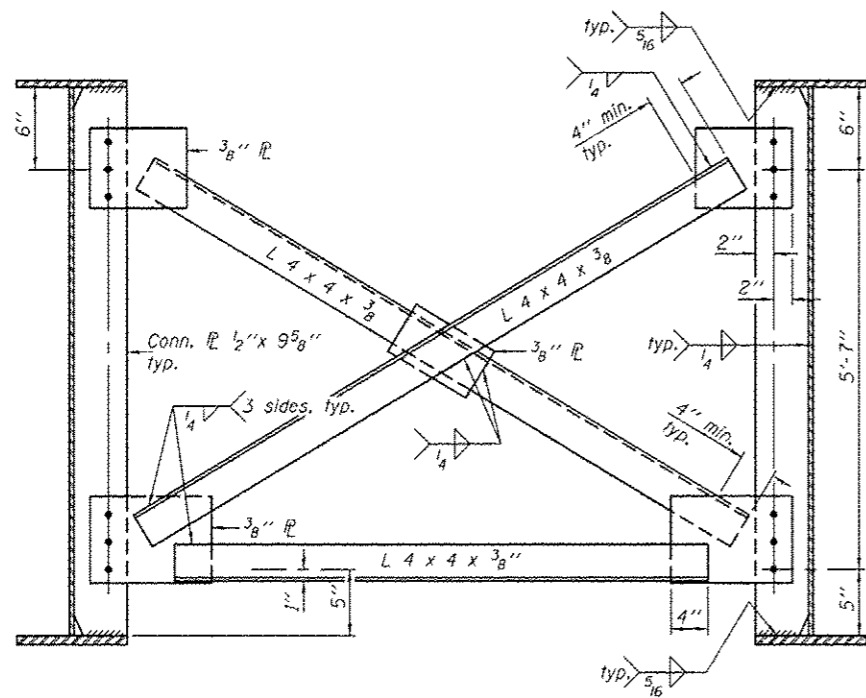
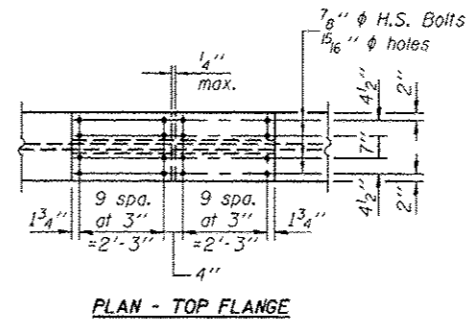


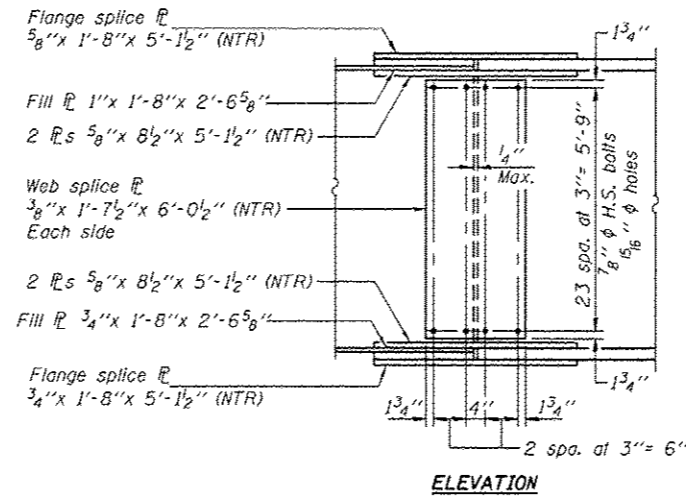
CROSS FRAME CF
(20 Required)



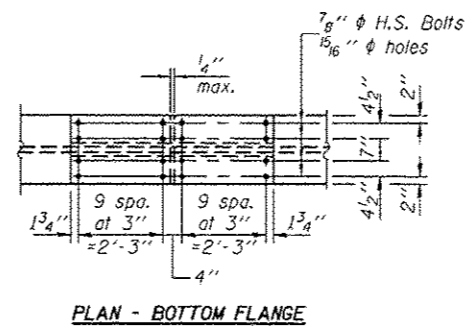
CROSS FRAME CF1
(170 Required)



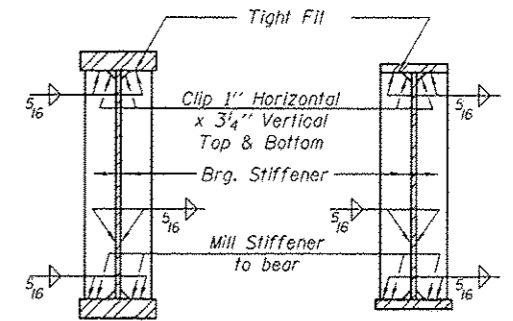
PLAN - TOP FLANGE



ELEVATION

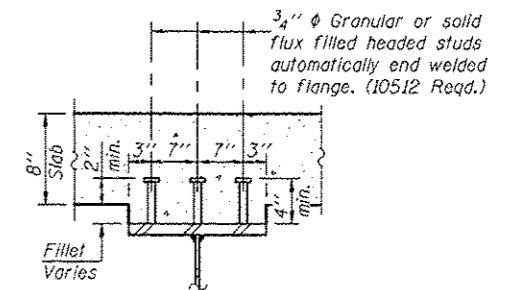


PLAN - BOTTOM FLANGE
SPLICE 1 & 2 DETAILS
(24 Required)



SECTION AT PIER

SECTION AT ABUTMENT



SECTION A-A

Notes:
 Load carrying components designated "NTR" shall conform to the Impact Testing Requirement, Zone 2.
 Use 3/4" H.S. bolts with 5/16" diameter holes in CF and CF1 cross frames.
 Two hardened washers required for each set of oversized holes.
 Place cross frame with channel flanges and outstanding angle legs outward from abutment backwall.
 Omit connecting plates on exterior side of exterior girder.
 All splice plates except filler plate shall be AASHTO M 270 Gr. 50.

DESIGNED - Nick R. Barnett
 CHECKED - Al-Barroo R. Shobib
 DRAWN - h.t. duong
 CHECKED - NRB/GRA

EXAMINED - *James F. Miller*
 ACTING ENGINEER OF BRIDGE DESIGN
 PASSED - *Carl Kopp*
 ACTING ENGINEER OF BRIDGES AND STRUCTURES

DATE - OCTOBER 4, 2013
 REVISED
 REVISED

STATE OF ILLINOIS
 DEPARTMENT OF TRANSPORTATION

STRUCTURAL STEEL DETAILS
 STRUCTURE NO. 101-0195 (E.B.) & 101-0196 (W.B.)

SHEET NO. 28 OF 55 SHEETS

F.A.P. RTE.	SECTION	COUNTY	TOTAL SHEETS	SHEET NO.
301	3BR & 3BR-1	WINNEBAGO	290	127
				CONTRACT NO. 64D19
ILLINOIS FED. AID PROJECT				