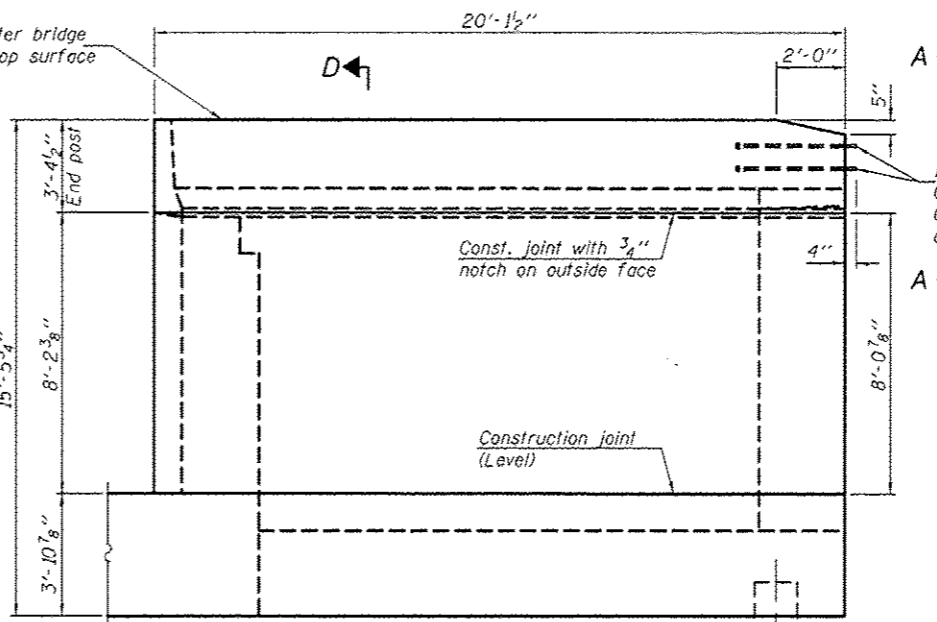
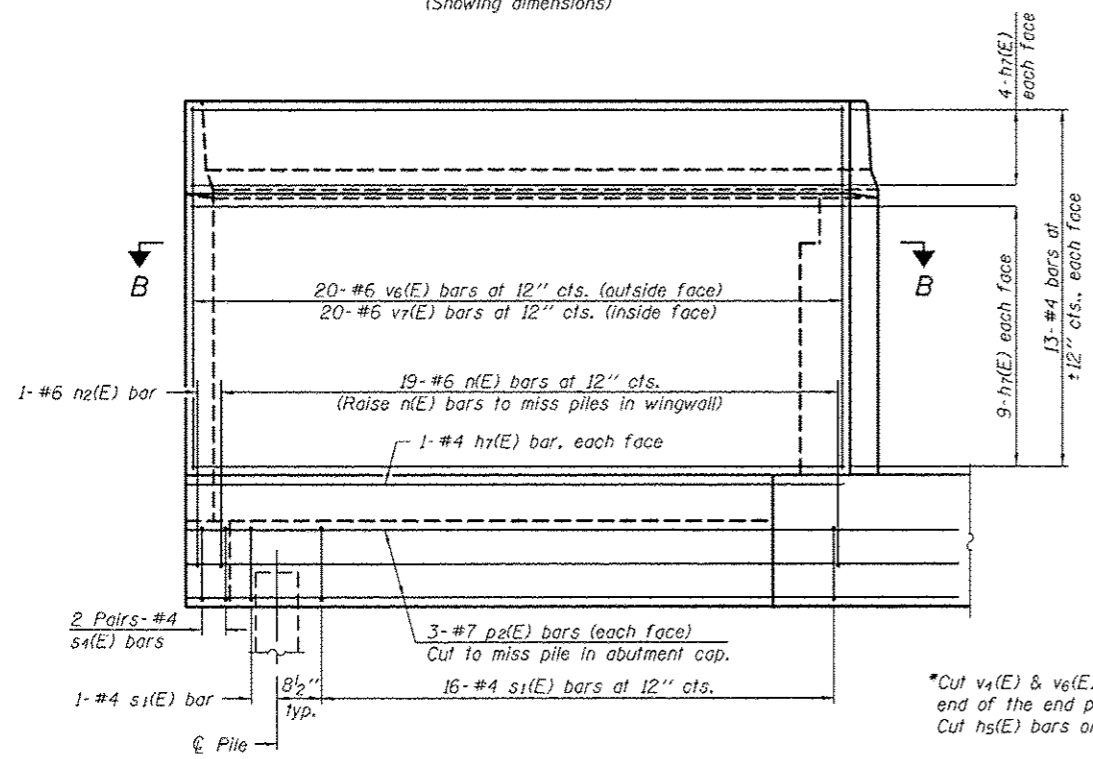
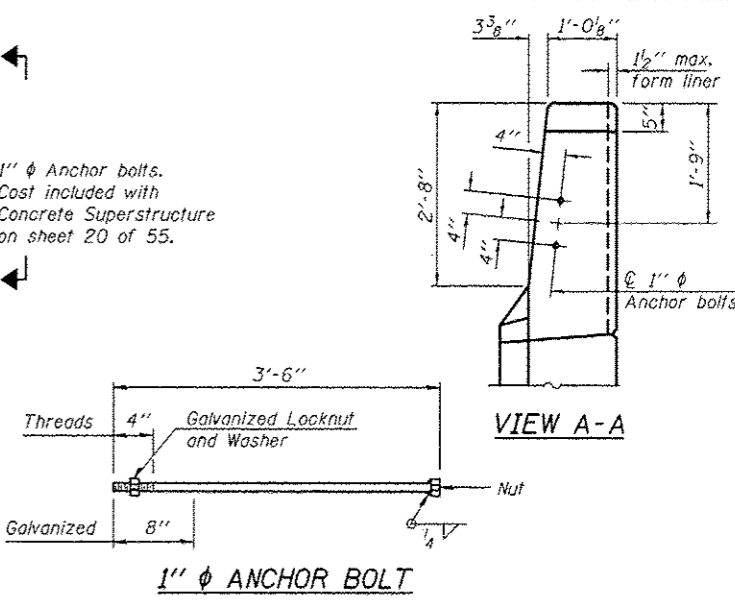


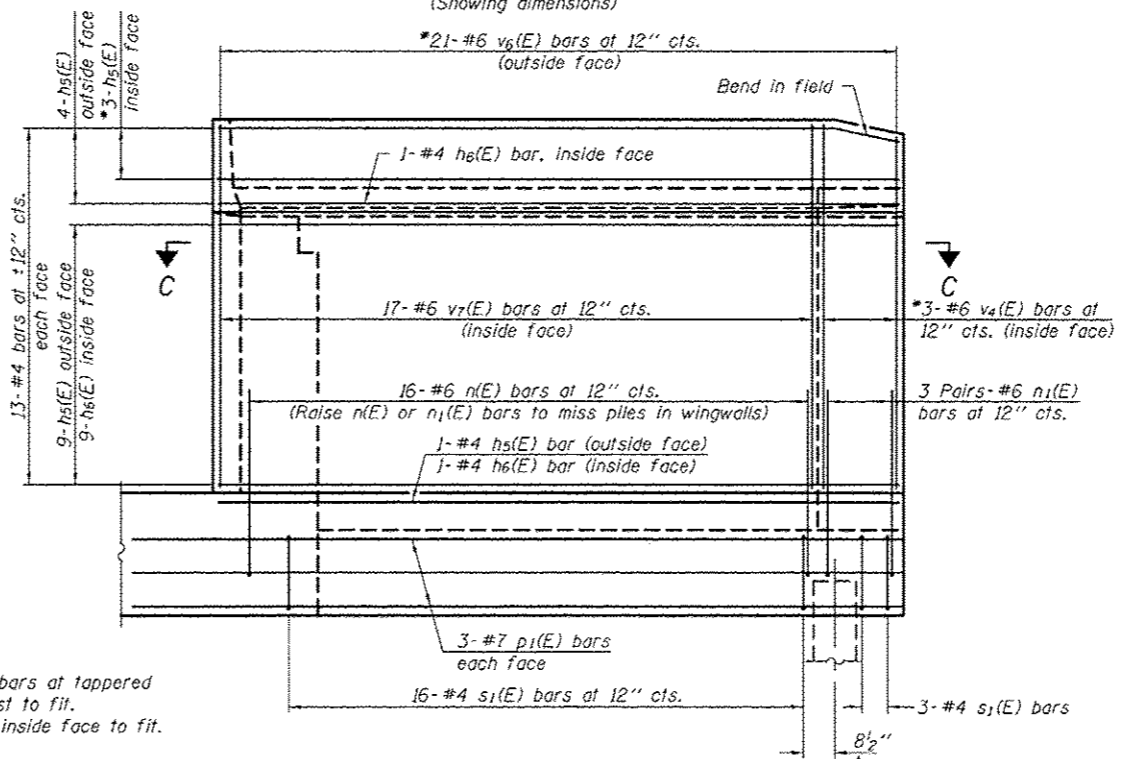
NORTH WINGWALL ELEVATION
(Showing dimensions)



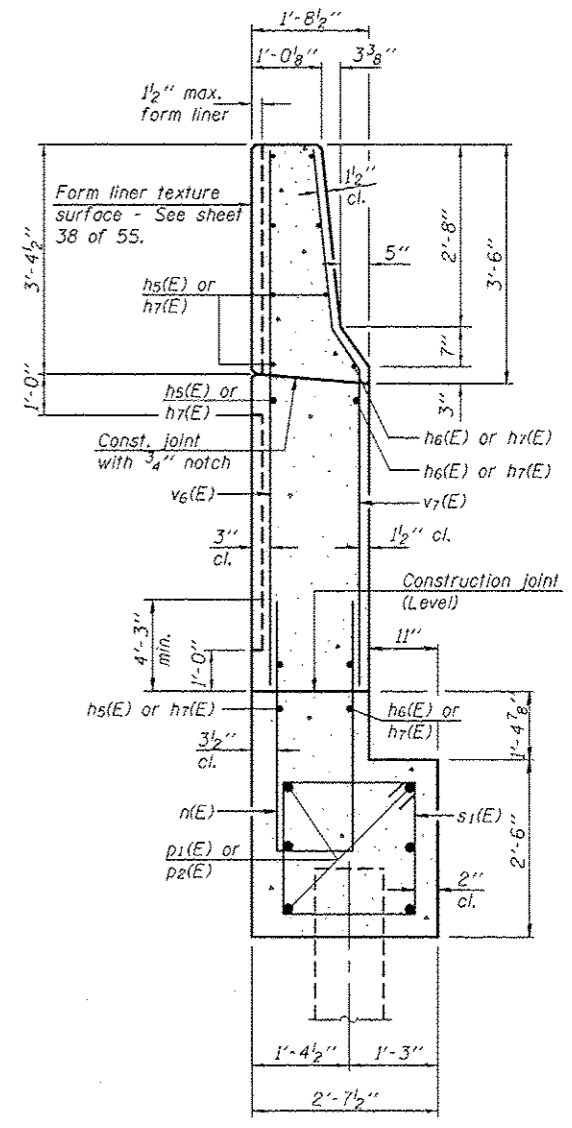
SOUTH WINGWALL ELEVATION
(Showing dimensions)



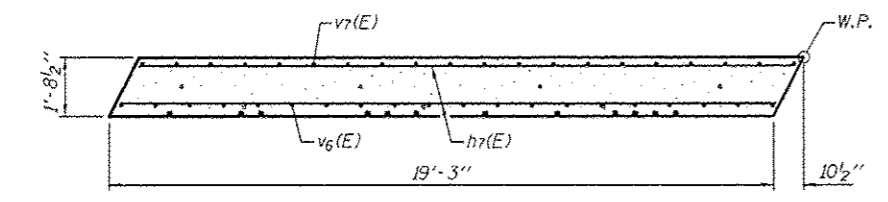
NORTH WINGWALL ELEVATION
(Showing reinforcement)



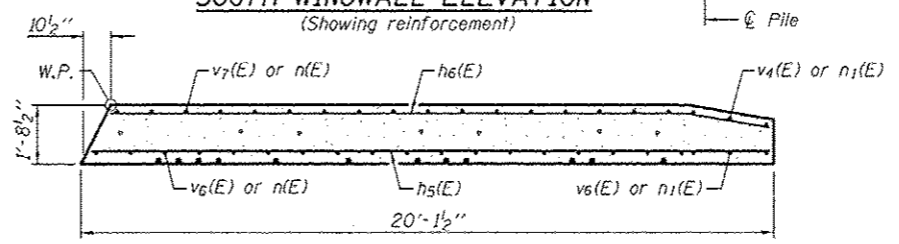
SOUTH WINGWALL ELEVATION
(Showing reinforcement)



SECTION D-D



SECTION B-B



SECTION C-C

DESIGNED - NICHOLAS R. BARNETT	EXAMINED - <i>James F. [Signature]</i>	DATE - OCTOBER 4, 2013	STATE OF ILLINOIS DEPARTMENT OF TRANSPORTATION		EAST ABUTMENT DETAILS (E.B.) - STAGE I CONSTRUCTION STRUCTURE NO. 101-0195 (E.B.) & 101-0196 (W.B.)		F.A.P. RTE.	SECTION	COUNTY	TOTAL SHEETS	SHEET NO.
CHECKED - AL-BARRAE R. SHEDIB	ACTING ENGINEER OF BRIDGES DESIGN						301	3BR & 3BR-1	WINNEBAGO	290	135
DRAWN - MICHAEL B. MOSSMAN	PASSED - <i>Michael B. [Signature]</i>	REVISED	SHEET NO. 36 OF 55 SHEETS		ILLINOIS FED. AID PROJECT		CONTRACT NO. 64D19				
CHECKED - NRB/GRA	ACTING ENGINEER OF BRIDGES AND STRUCTURES	REVISED									