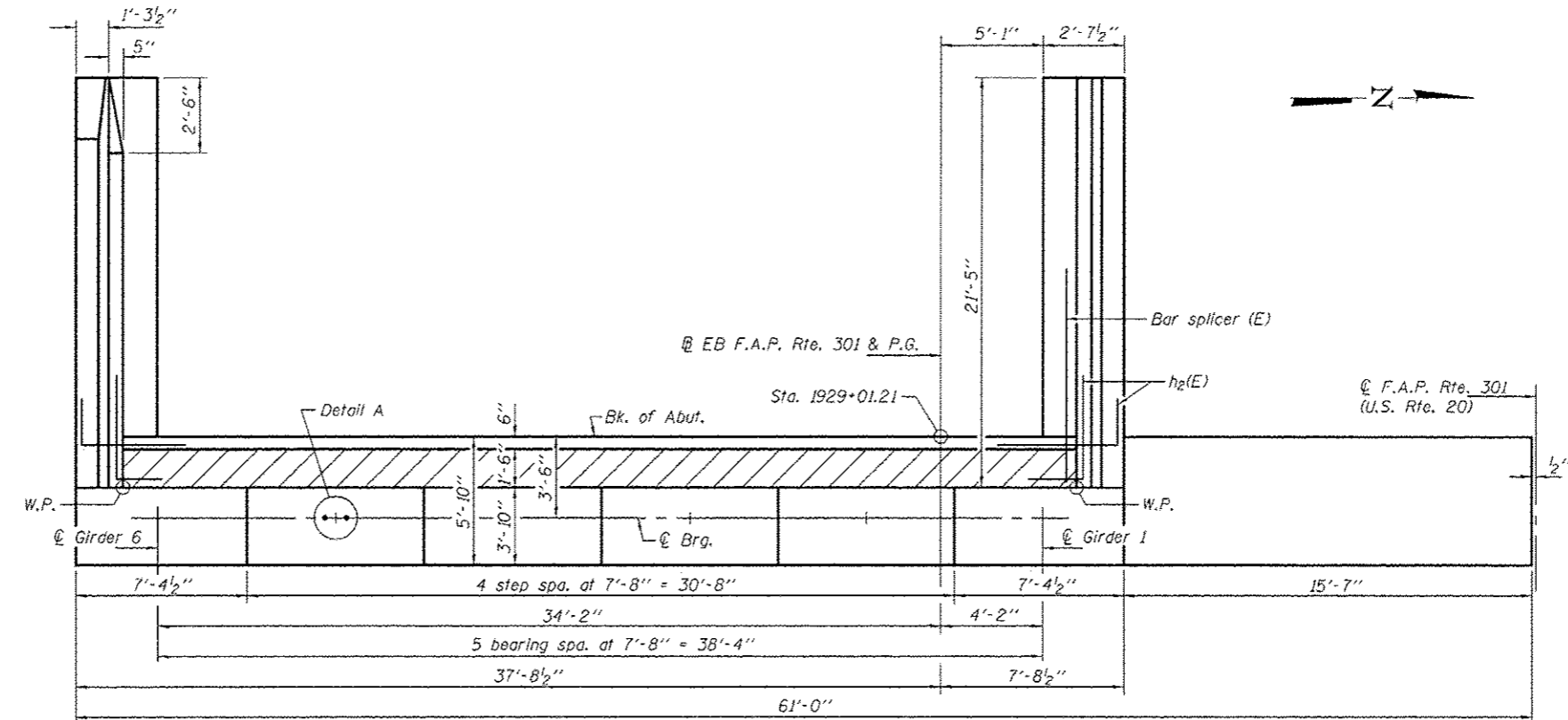
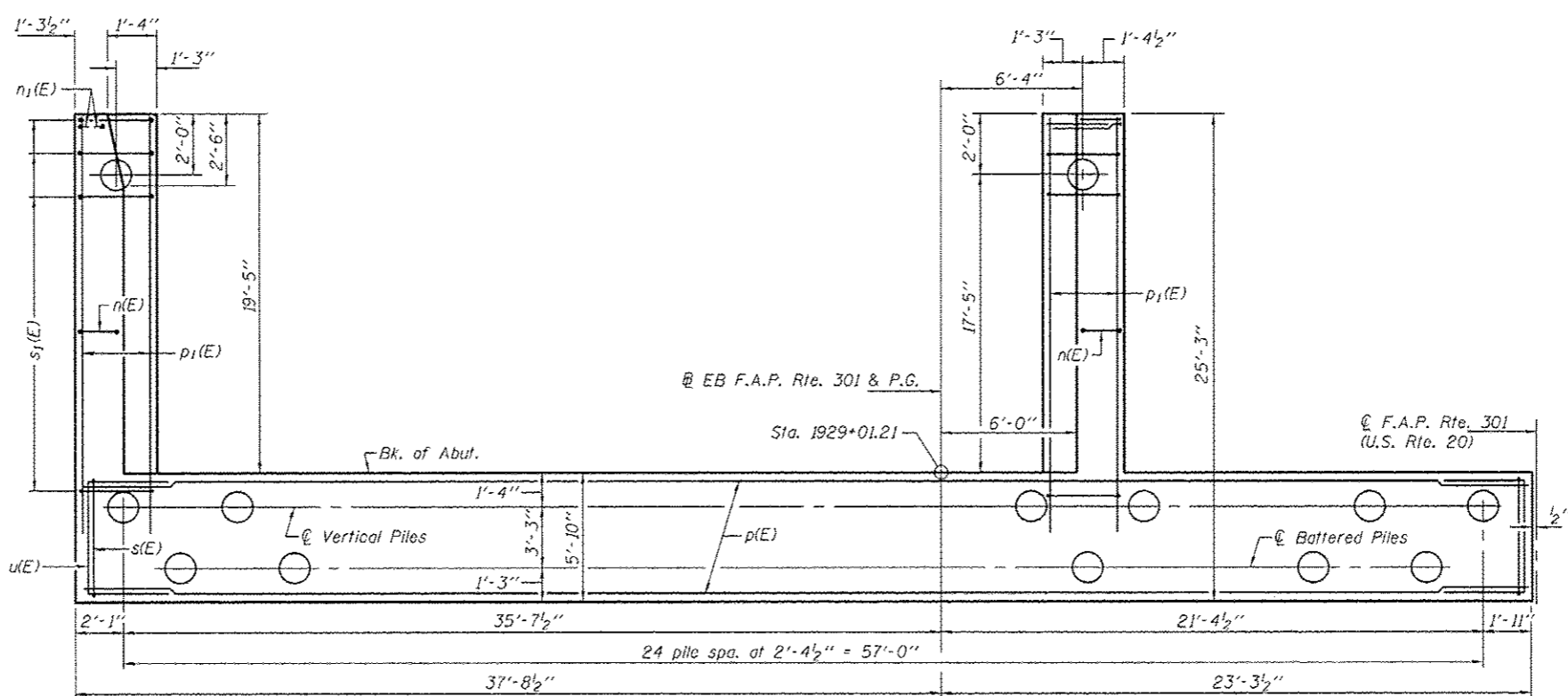


PILE DATA

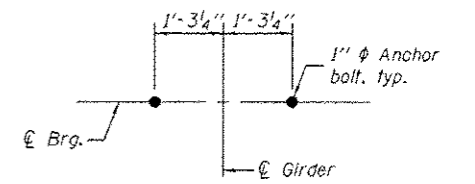
Type: Metal Shells 14"x .312" with Pile Shoes
 Nominal Required Bearing: 453 Kips
 Factored Resistance Available: 249 Kips
 Est. Length: 50'
 No. Production Piles: 26
 No. Test Piles: 1



TOP VIEW



PLAN-PILE CAP



DETAIL A

**WEST ABUTMENT (E.B.)
BILL OF MATERIAL**

Bar	No.	Size	Length	Shape
h(E)	14	#5	41'-8"	
h1(E)	5	#6	41'-8"	
h2(E)	36	#5	5'-3"	
h3(E)	42	#4	21'-1"	
h4(E)	14	#4	21'-2"	
h5(E)	5	#5	22'-8"	
n(E)	41	#6	16'-10"	
n1(E)	6	#6	8'-5"	
p(E)	28	#7	32'-11"	
p1(E)	12	#7	23'-2"	
s(E)	78	#5	18'-5"	
s1(E)	42	#4	9'-5"	
s2(E)	23	#4	8'-6"	
u(E)	8	#6	13'-1"	
v(E)	43	#5	3'-10"	
v1(E)	43	#4	3'-2"	
v2(E)	44	#6	11'-8"	
v3(E)	3	#6	11'-1"	
v4(E)	41	#6	11'-9"	
v5(E)	43	#5	9'-2"	
v6(E)	43	#5	10'-6"	
Structure Excavation	Cu. Yd.		165	
Concrete Structures	Cu. Yd.		108.8	
Reinforcement Bars, Epoxy Coated	Pound		10330	
Furnishing Metal Shell Piles 14"x .312"	Foot		1300	
Driving Piles	Foot		1300	
Test Pile, Metal Shells	Each		1	
Pile Shoes	Each		27	
Concrete Sealer	Sq. Ft.		894	
Anchor Bolts, 1"	Each		12	

For details of piles, see sheet 15 of 50.
 See sheet 35 of 50 for reinforcement in the wingwalls.

DESIGNED - Nick R. Barnett
 CHECKED - Frank W. Sharpa
 DRAWN - h.t. duong
 CHECKED - NRB/FWS/GRA

EXAMINED
 PASSED
 ACTING ENGINEER OF BRIDGE DESIGN
 ACTING ENGINEER OF BRIDGES AND STRUCTURES

DATE - OCTOBER 4, 2013
 REVISED
 REVISED

**STATE OF ILLINOIS
DEPARTMENT OF TRANSPORTATION**

**WEST ABUTMENT (E.B.) - STAGE I CONSTRUCTION
STRUCTURE NO. 101-0197 (E.B.) & 101-0198 (W.B.)**
 SHEET NO. 31 OF 50 SHEETS

F.A.P. RTE.	SECTION	COUNTY	TOTAL SHEETS	SHEET NO.
301	3BR & 3BR-1	WINNEBAGO	290	206

CONTRACT NO. 64D19
 ILLINOIS FED. AID PROJECT