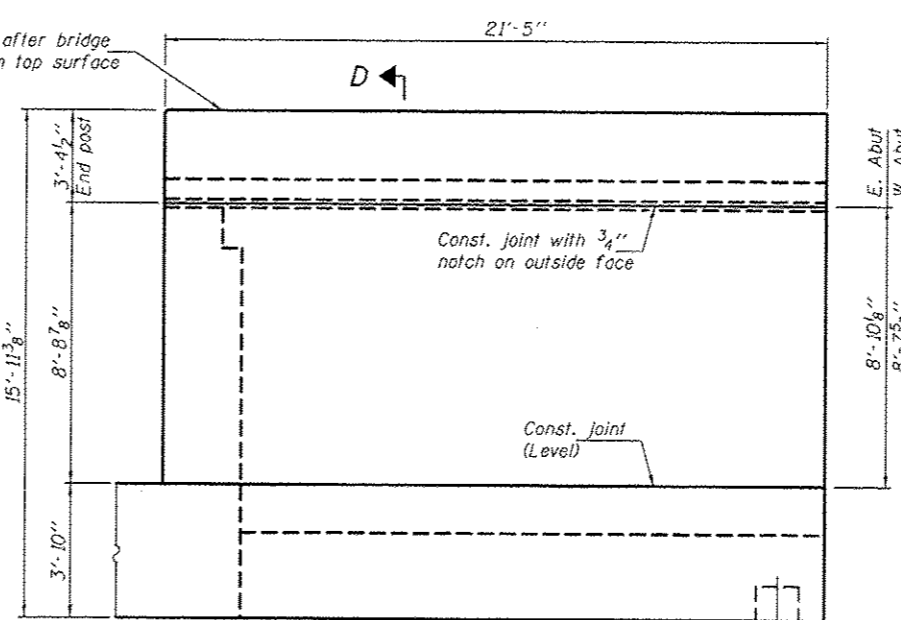
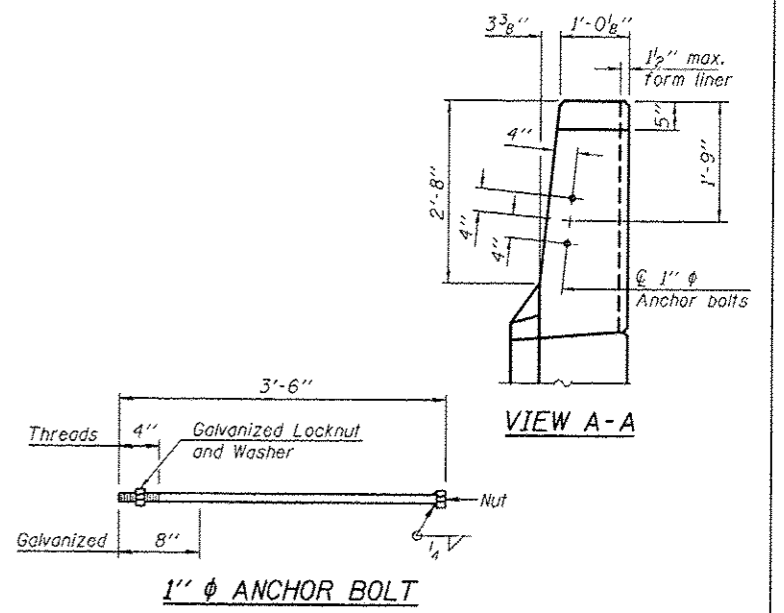


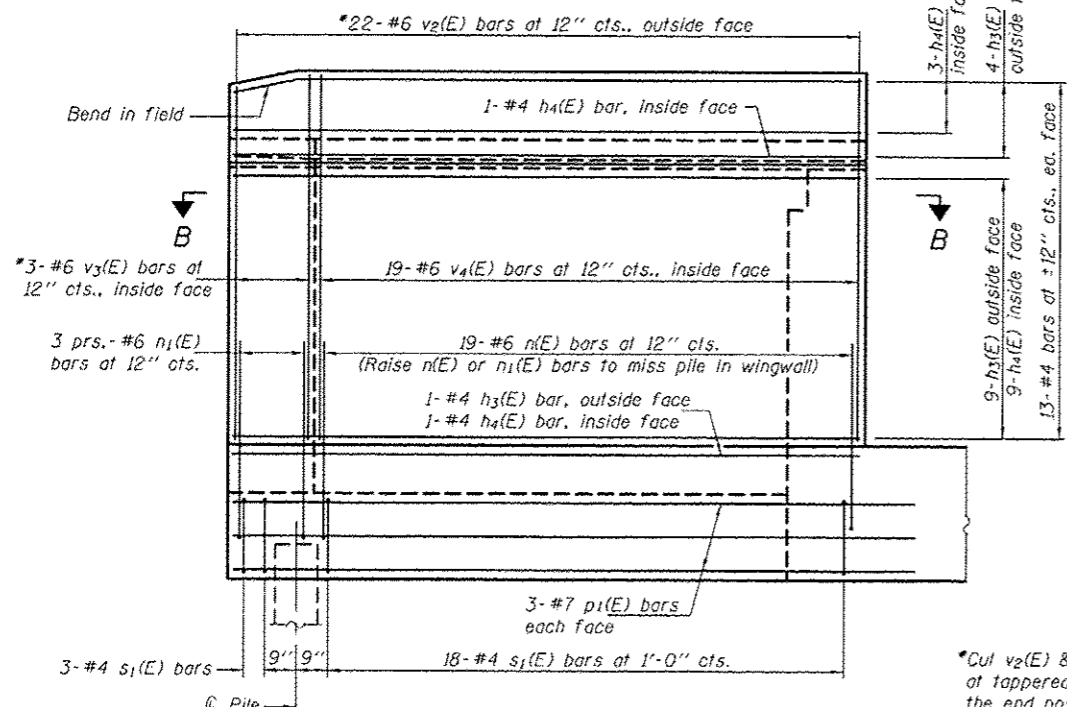
**SOUTH WINGWALL ELEVATION**  
(Showing dimensions)



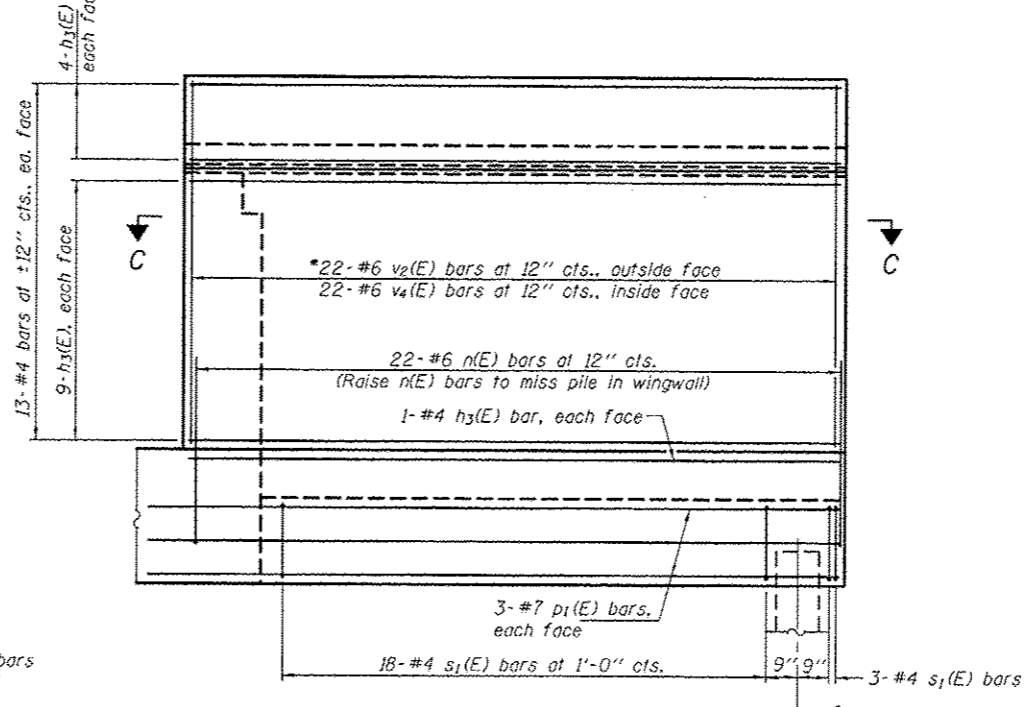
**NORTH WINGWALL ELEVATION**  
(Showing dimensions)



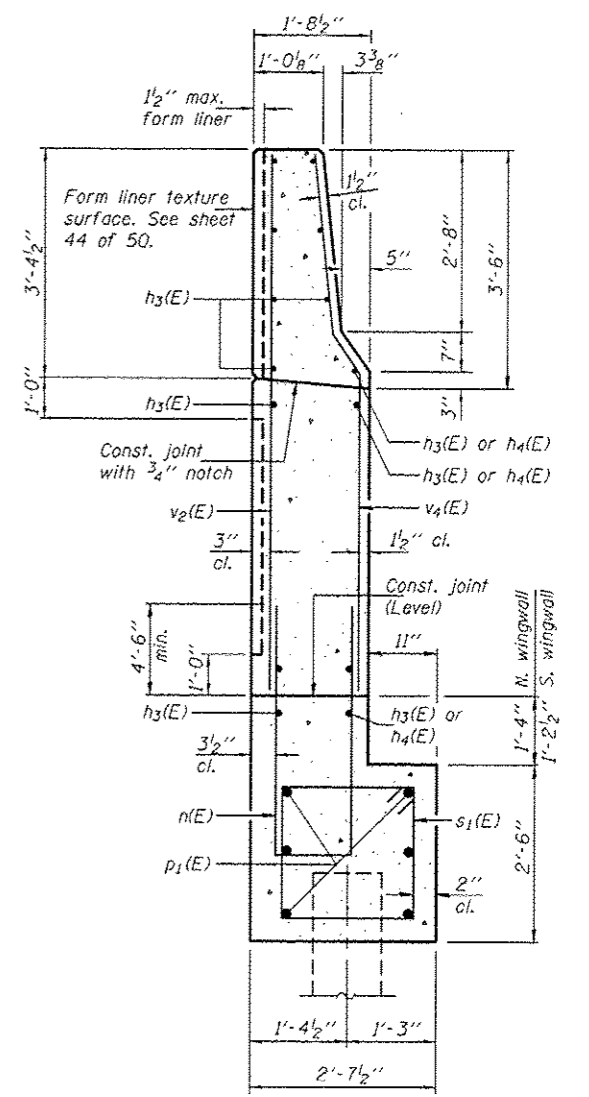
**1" diameter ANCHOR BOLT**



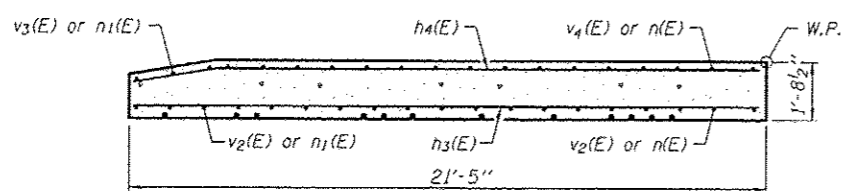
**SOUTH WINGWALL ELEVATION**  
(Showing reinforcement)



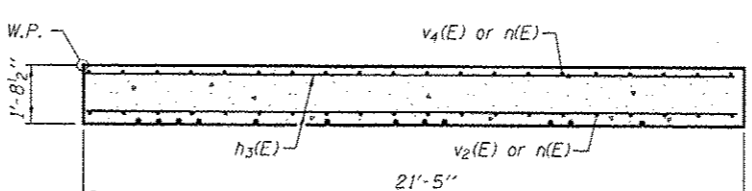
**NORTH WINGWALL ELEVATION**  
(Showing reinforcement)



**SECTION D-D**



**SECTION B-B**



**SECTION C-C**

DESIGNED - Nick R. Barnett  
CHECKED - Frank W. Sharpe  
DRAWN - h.t. duong  
CHECKED - NBB/FWS/GRA

EXAMINED - *Joanne F. [Signature]*  
ACTING ENGINEER OF BRIDGE DESIGN  
PASSED - *[Signature]*  
ACTING ENGINEER OF BRIDGES AND STRUCTURES  
DATE - OCTOBER 4, 2013  
REVISED -  
REVISED -

STATE OF ILLINOIS  
DEPARTMENT OF TRANSPORTATION

ABUTMENT DETAILS (E.B.) - STAGE I CONSTRUCTION  
STRUCTURE NO. 101-0197 (E.B.) & 101-0198 (W.B.)

F.A.P. RTE.	SECTION	COUNTY	TOTAL SHEETS	SHEET NO.
301	3BR & 3BR-1	WINNEBAGO	290	210
CONTRACT NO. 64D19			ILLINOIS FED. AID PROJECT	

SHEET NO. 35 OF 50 SHEETS