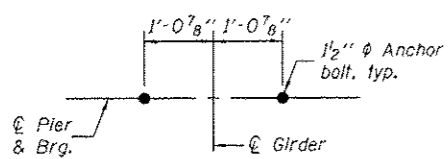
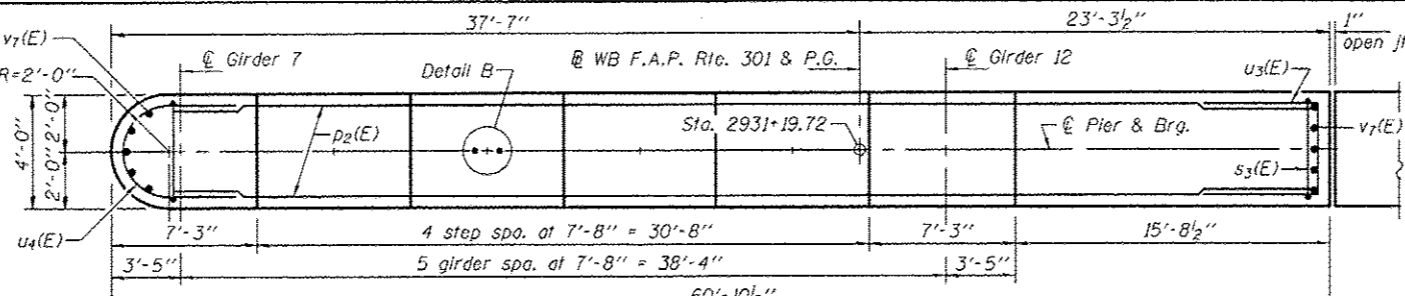


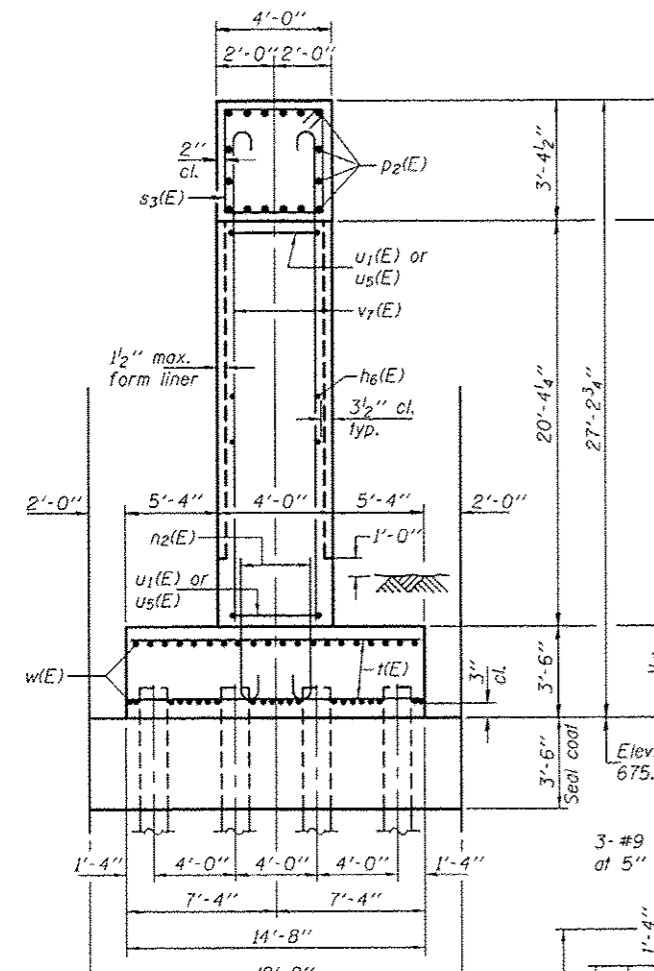
Notes:  
 Space reinforcement in cap to miss anchor bolts.  
 Pour steps monolithically with cap.  
 For details of piles, see sheet 45 of 50.



DETAIL B



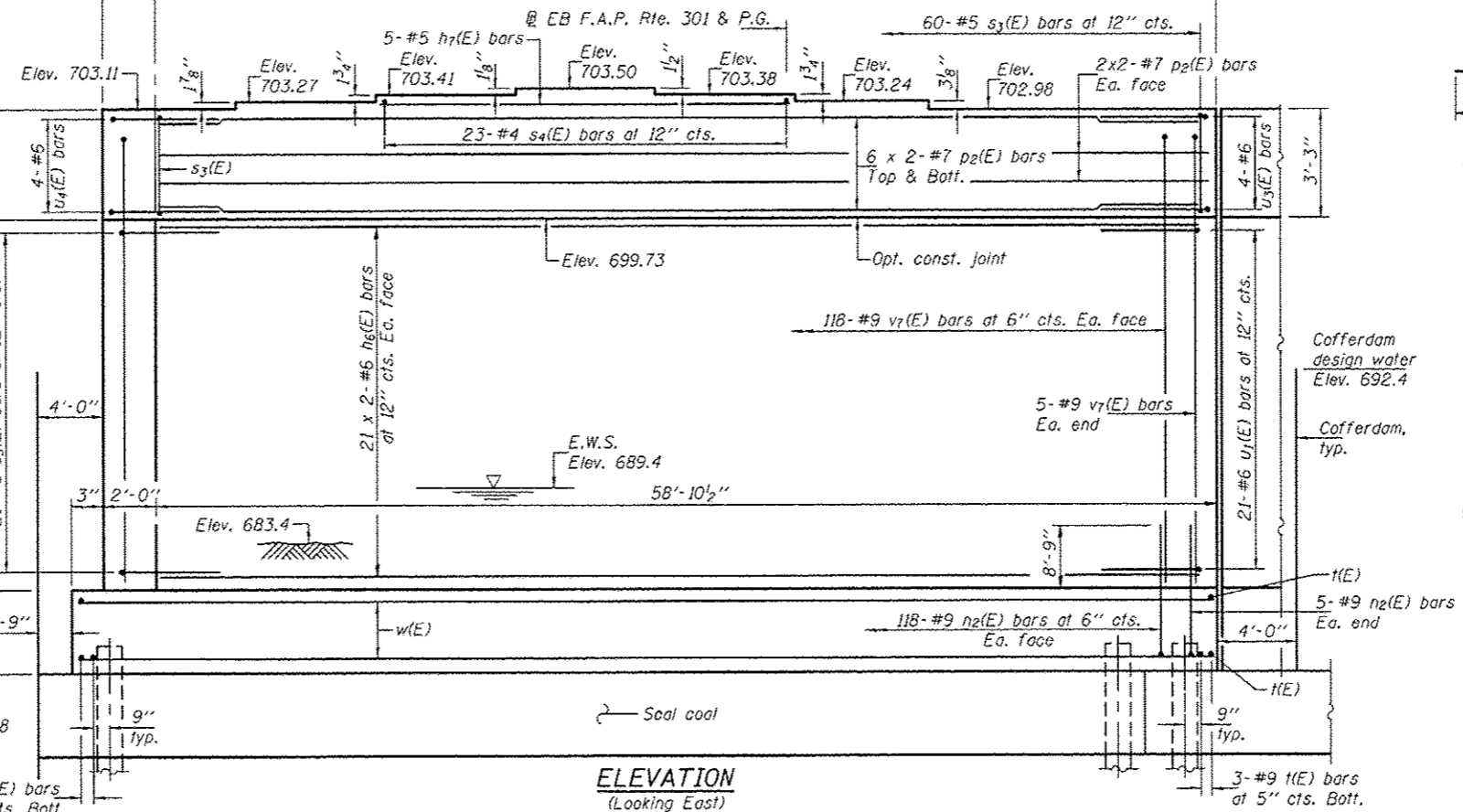
TOP PLAN



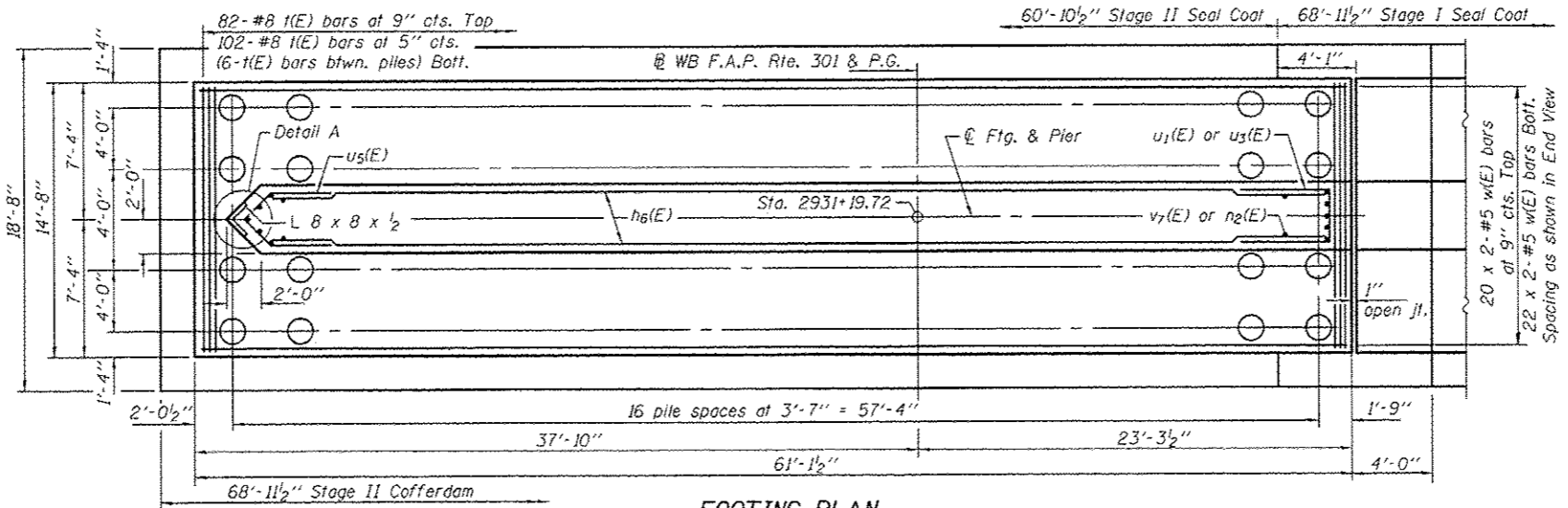
END VIEW

**MIN. BAR LAP**  
 #5 bar = 3'-3"  
 #6 bar = 3'-10"  
 #7 bar = 5'-2"

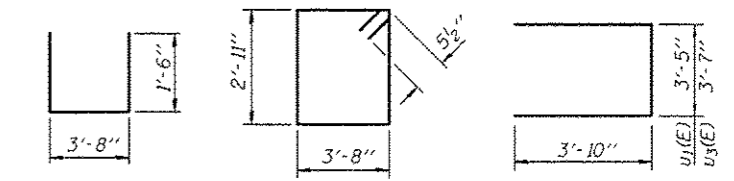
**PILE DATA**  
 Type: Metal Shells 14"x .312" with Pile Shoes  
 Nominal Required Bearing: 316 Kips  
 Factored Resistance Available: 166 Kips  
 Est. Length: 34'  
 No. Production Piles: 67  
 No. Test Piles: 1



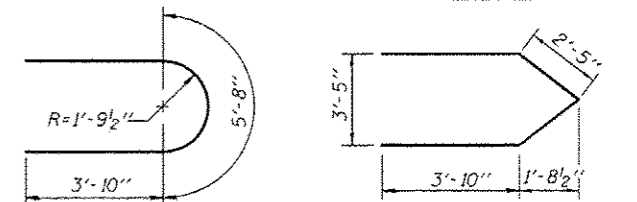
ELEVATION  
(Looking East)



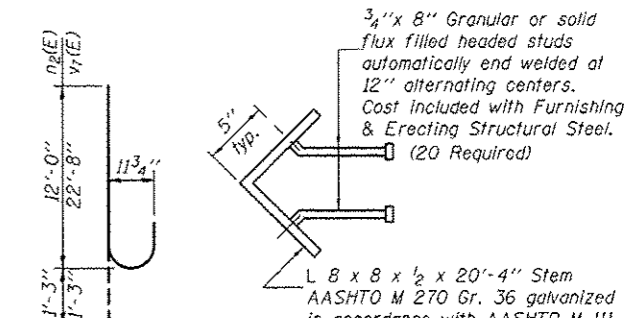
FOOTING PLAN



BAR S4(E)  
 BAR S3(E)  
 BARS U1(E) & U3(E)



BAR U4(E)  
 BAR U5(E)



BARS n2(E) & v7(E)

3/4" x 8" Granular or solid flux filled headed studs automatically end welded at 12" alternating centers. Cost included with Furnishing & Erecting Structural Steel. (20 Required)

L 8 x 8 x 1/2 x 20'-4" Stem AASHTO M 270 Gr. 36 galvanized in accordance with AASHTO M 111. Cost included with Furnishing & Erecting Structural Steel.

DETAIL A

**BILL OF MATERIAL**

Bar No.	Size	Length	Shape
h6(E)	#4	31'-4"	—
h7(E)	#5	22'-8"	—
n2(E)	#9	13'-3"	U
p2(E)	#7	31'-11"	—
s3(E)	#5	14'-1"	□
s4(E)	#4	6'-8"	□
t(E)	#8	14'-4"	—
u1(E)	#6	11'-1"	U
u3(E)	#6	11'-3"	U
u4(E)	#6	13'-4"	U
u5(E)	#6	12'-6"	U
v7(E)	#9	23'-11"	U
w(E)	#5	32'-1"	—
Cofferdam Excavation	Cu. Yd.	464	
Concrete Structures	Cu. Yd.	328.3	
Reinforcement Bars, Epoxy Coated	Pound	48970	
Furnishing Metal Shell Piles 14"x .312"	Foot	2278	
Driving Piles	Foot	2278	
Test Pile, Metal Shells	Each	1	
Pile Shoes	Each	68	
Cofferdam (Type 2), Location 2	Each	0.5	
Anchor Bolts 1/2"	Each	12	
Seal Coat Concrete	Cu. Yd.	147.3	