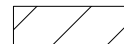

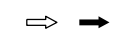




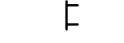
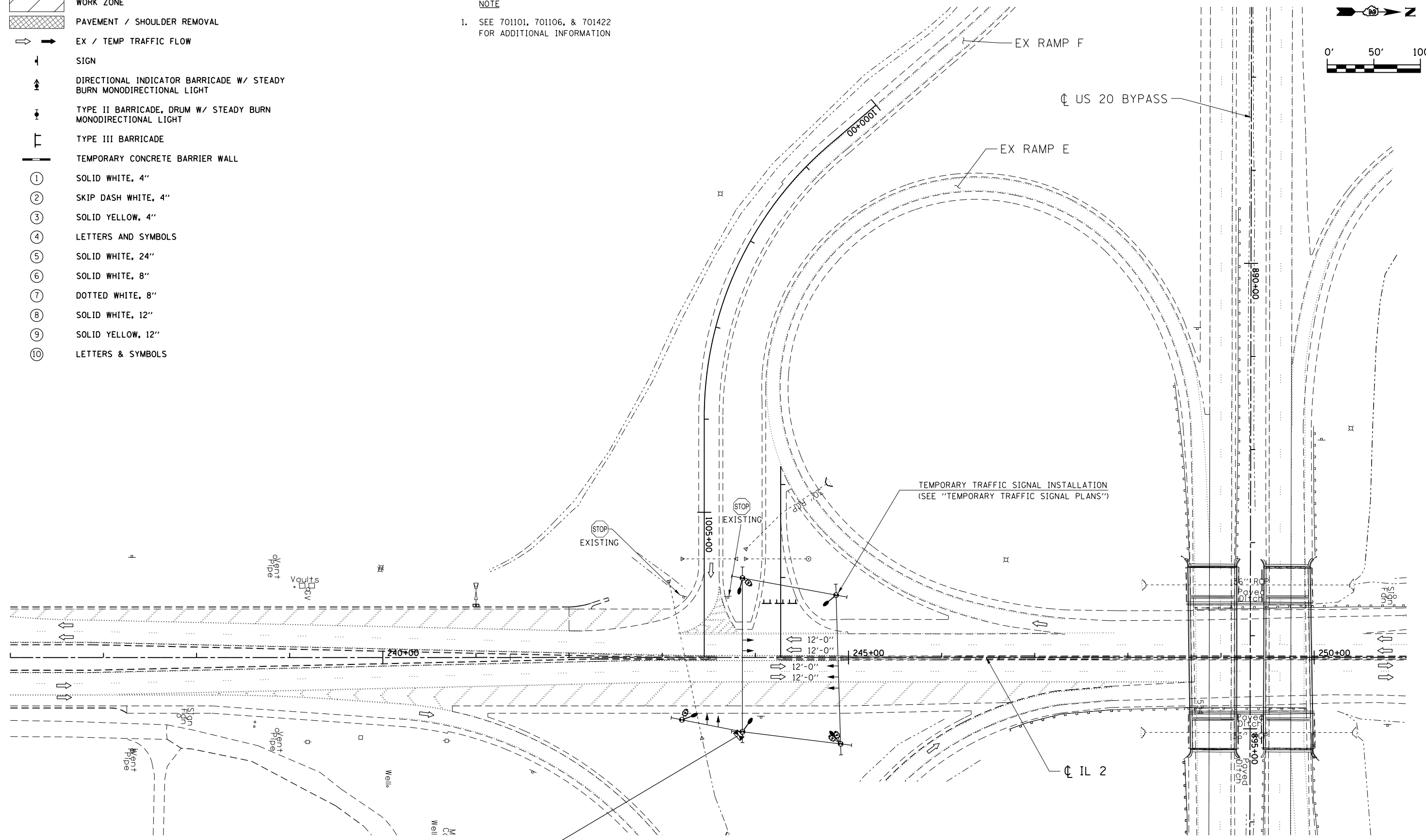
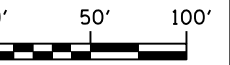


STAGING LEGEND

-  WORK ZONE
-  PAVEMENT / SHOULDER REMOVAL
-  EX / TEMP TRAFFIC FLOW
-  SIGN
-  DIRECTIONAL INDICATOR BARRICADE W/ STEADY BURN MONODIRECTIONAL LIGHT
-  TYPE II BARRICADE, DRUM W/ STEADY BURN MONODIRECTIONAL LIGHT
-  TYPE III BARRICADE
-  TEMPORARY CONCRETE BARRIER WALL
- ① SOLID WHITE, 4"
- ② SKIP DASH WHITE, 4"
- ③ SOLID YELLOW, 4"
- ④ LETTERS AND SYMBOLS
- ⑤ SOLID WHITE, 24"
- ⑥ SOLID WHITE, 8"
- ⑦ DOTTED WHITE, 8"
- ⑧ SOLID WHITE, 12"
- ⑨ SOLID YELLOW, 12"
- ⑩ LETTERS & SYMBOLS

NOTE

1. SEE 701101, 701106, & 701422 FOR ADDITIONAL INFORMATION



FILE NAME = D264019-ahh-Staging-Pre1A.12.dgn
 MODEL = Default
 PLOT DRIVER = V8...IDOT...PDF...11x17.pltcf9



USER NAME = rgoertz	DESIGNED - RG	REVISED -
PLOT SCALE = 100.0000' / 1in.	DRAWN - TRF	REVISED -
PLOT DATE = 8/16/2013	CHECKED - CMS	REVISED -
	DATE - 07/01/2013	REVISED -

**STATE OF ILLINOIS
DEPARTMENT OF TRANSPORTATION**

STAGING PLAN PRESTAGE 1A - IL 2			
SCALE:	SHEET NO.	OF SHEETS	STA. 236+00 TO STA. 251+00

F.A.P. RTE.	SECTION	COUNTY	TOTAL SHEETS	SHEET NO.
301	3BR & 3BR-1	WINNEBAGO	290	52
CONTRACT NO. 64D19				
FED. ROAD DIST. NO. ILLINOIS FED. AID PROJECT				