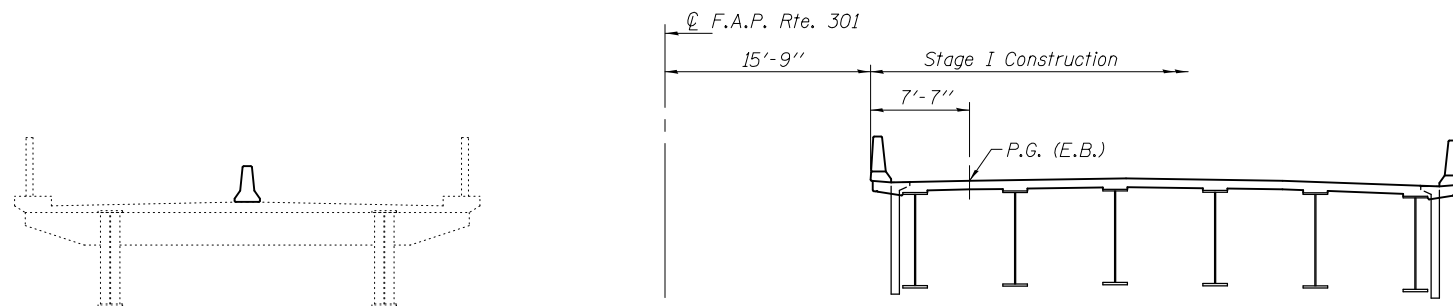
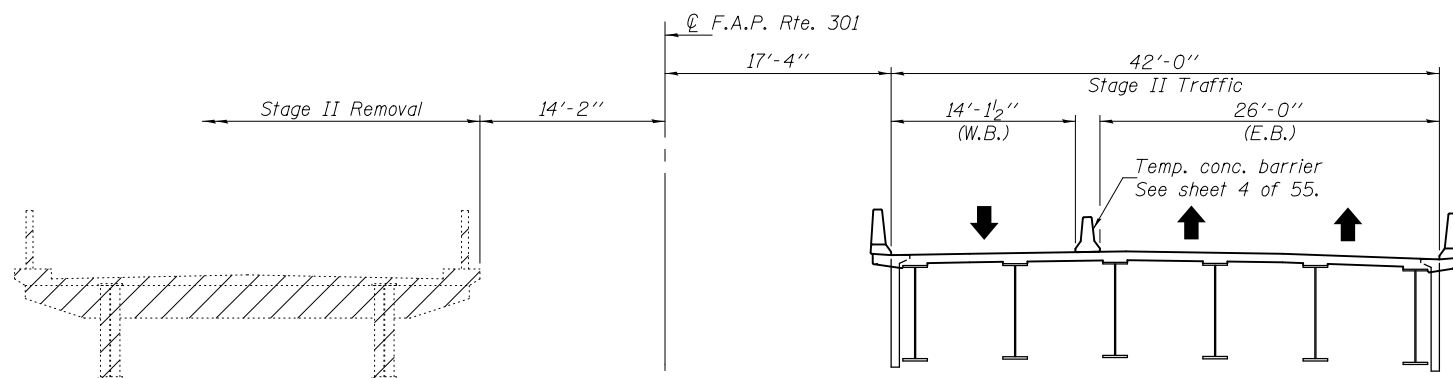


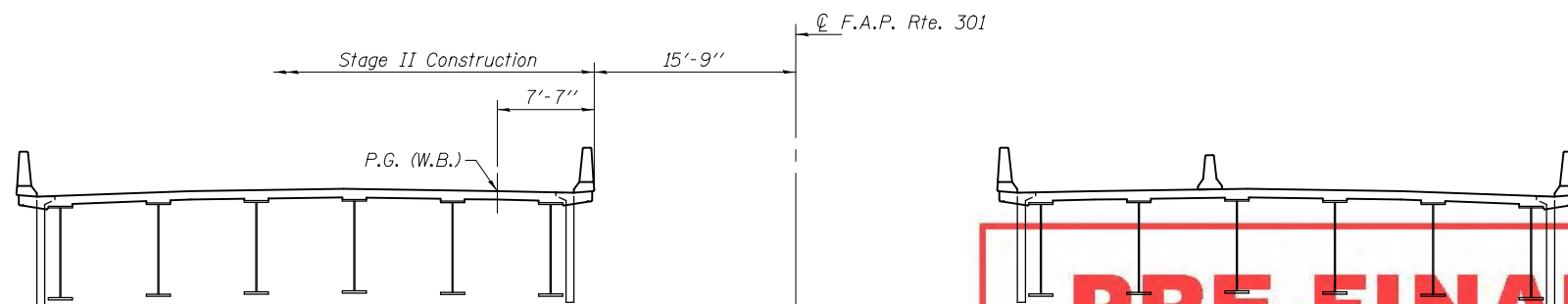
STAGE I REMOVAL



STAGE I CONSTRUCTION

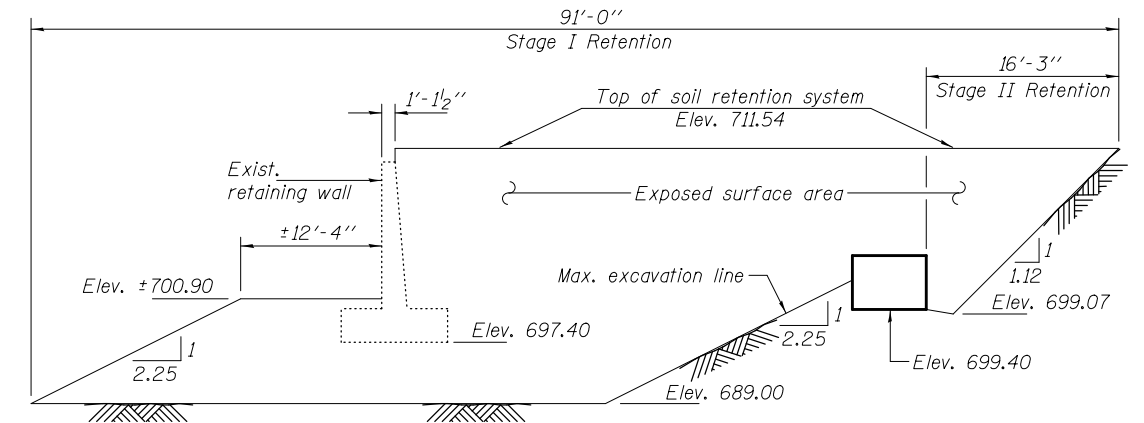


STAGE II REMOVAL



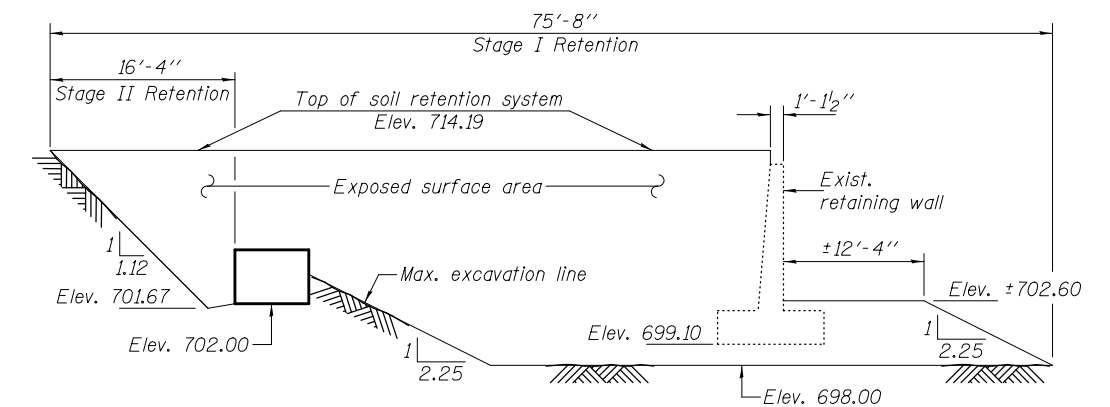
STAGE II CONSTRUCTION

Notes: All sections are looking east.
 Hatched area indicates removal of existing superstructure.
 For quantity of temporary concrete barrier, see Roadway Plans.



TEMPORARY SOIL RETENTION SYSTEM AT EAST ABUTMENT

Dimensions are taken along C F.A.P. 301



TEMPORARY SOIL RETENTION SYSTEM AT WEST ABUTMENT

Dimensions are taken along C F.A.P. 301

Note: A cantilevered sheet piling design does not appear feasible and additional members or other retention systems may be necessary. The Contractor shall submit a temporary soil retention system design including plan details and calculations for review and acceptance by the Engineer.

PRE-FINAL

DESIGNED - Nick R. Barnett	EXAMINED - <i>Joanne F. [Signature]</i> ACTING ENGINEER OF BRIDGE DESIGN	DATE -	STATE OF ILLINOIS DEPARTMENT OF TRANSPORTATION	STAGE CONSTRUCTION & TEMP. SOIL RETENTION SYSTEM DETAILS STRUCTURE NO. 101-0195 (E.B.) & 101-0196 (W.B.)	F.A.P. RTE. 301	SECTION 3BR & 3BR-1	COUNTY WINNEBAGO	TOTAL SHEETS	SHEET NO.	
CHECKED - Al-Barrae R. Shebib	PASSED - <i>Carl [Signature]</i> ACTING ENGINEER OF BRIDGES AND STRUCTURES	REVISED			CONTRACT NO. 64D19		ILLINOIS FED. AID PROJECT			
DRAWN - h.t. duong		REVISED			SHEET NO. 3 OF 55 SHEETS					
CHECKED - NRB/GRA										