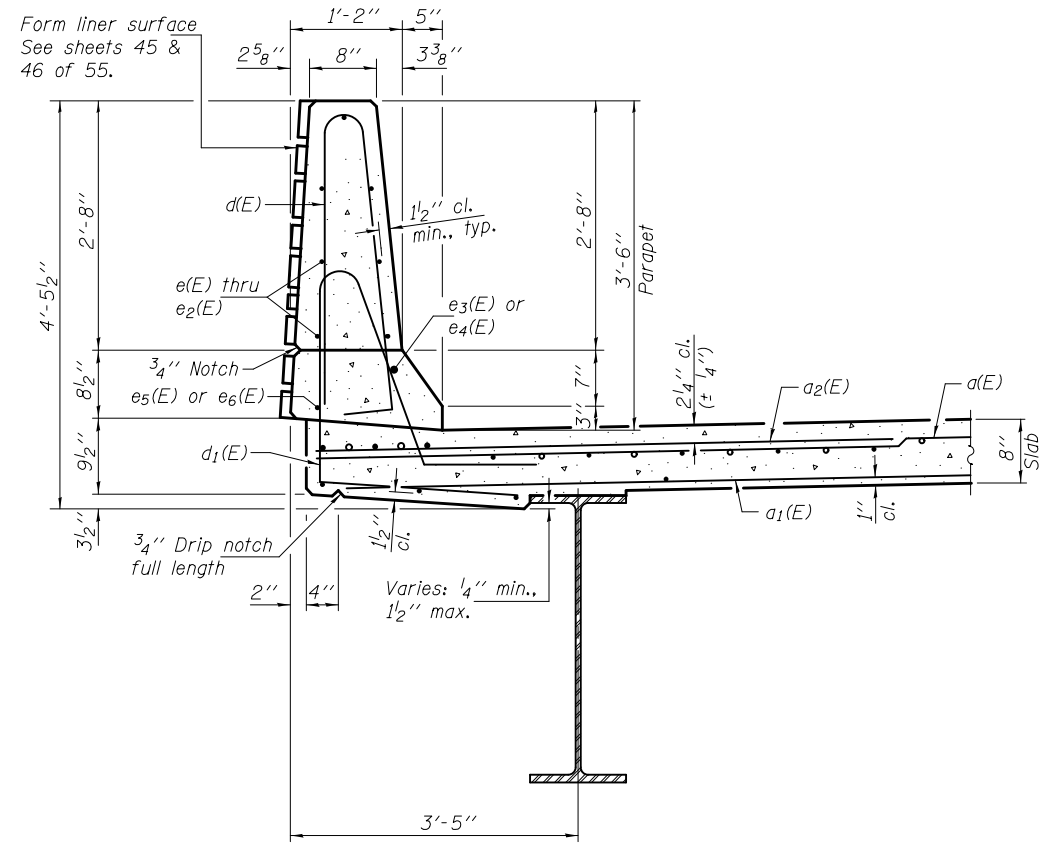
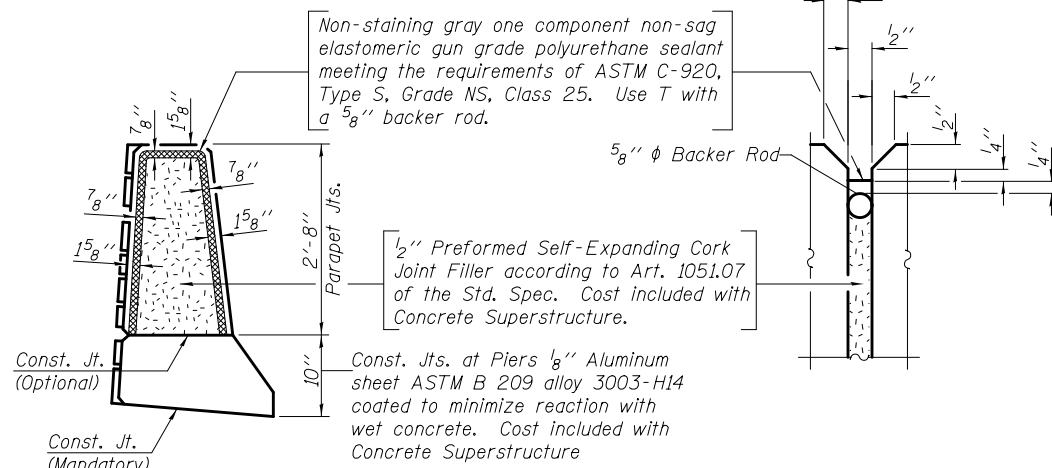


INSIDE ELEVATION OF NORTH PARAPET (E.B.)
(Looking North - South parapet similar)

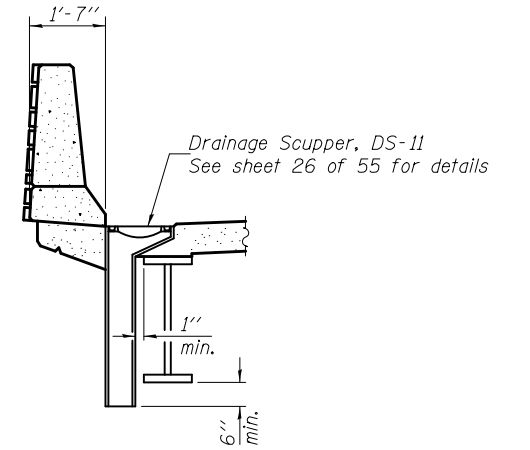


SECTION THRU PARAPET

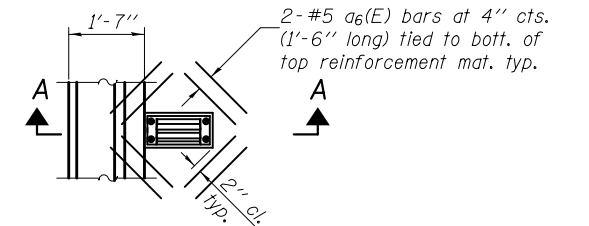


PARAPET JOINT DETAILS

MIN. BAR LAP
(Parapet)
#4 bar = 2'-0"
#8 bar = 3'-2"



SECTION A-A



PLAN

Note:
Cut longitudinal reinforcement to clear drainage scuppers.

PRE-FINAL

DESIGNED - Nick R. Barnett	EXAMINED - <i>Joanne F. [Signature]</i>	DATE -	STATE OF ILLINOIS DEPARTMENT OF TRANSPORTATION	SUPERSTRUCTURE DETAILS STRUCTURE NO. 101-0195 (E.B.) & 101-0196 (W.B.)	F.A.P. RTE.	SECTION	COUNTY	TOTAL SHEETS	SHEET NO.	
CHECKED - Al-Barræ R. Shebib	PASSED - <i>Carl [Signature]</i>	REVISED			301	3BR & 3BR-1	WINNEBAGO	CONTRACT NO. 64D19		
DRAWN - h.t. duong	ACTING ENGINEER OF BRIDGES AND STRUCTURES	REVISED			SHEET NO. 19 OF 55 SHEETS					
CHECKED - NRB/GRA		REVISED			ILLINOIS FED. AID PROJECT					