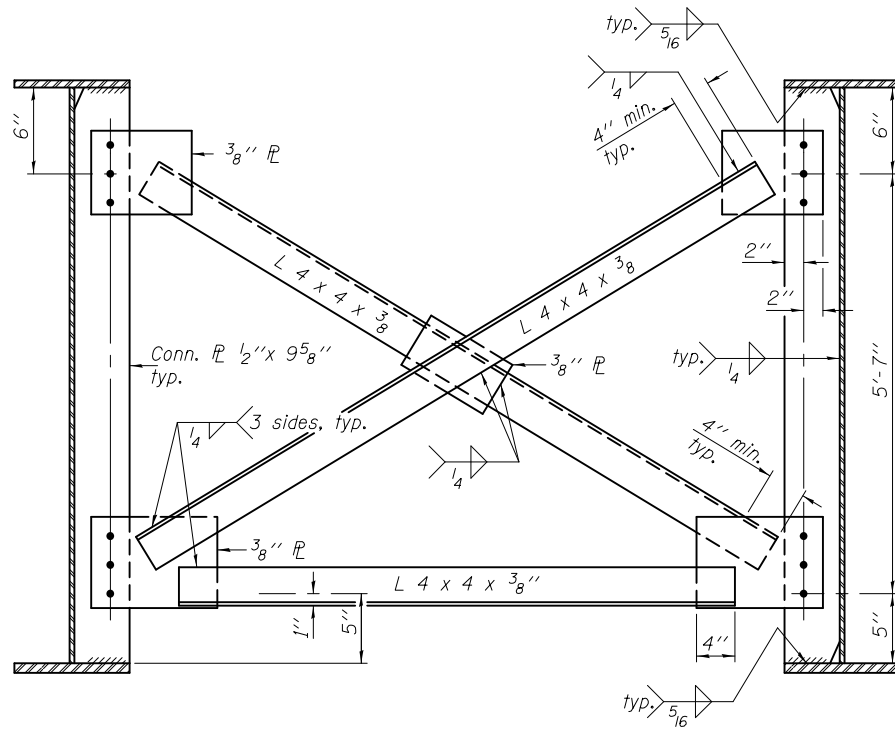
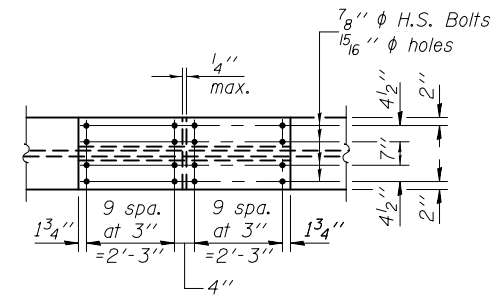


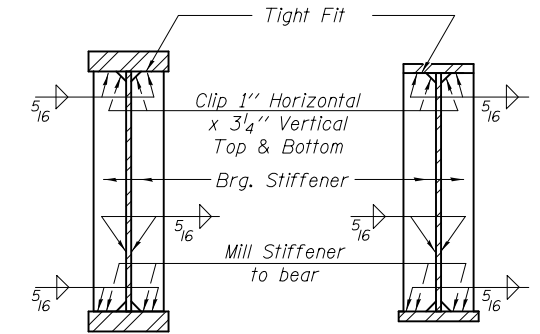
CROSS FRAME CF
(20 Required)



CROSS FRAME CF1
(170 Required)

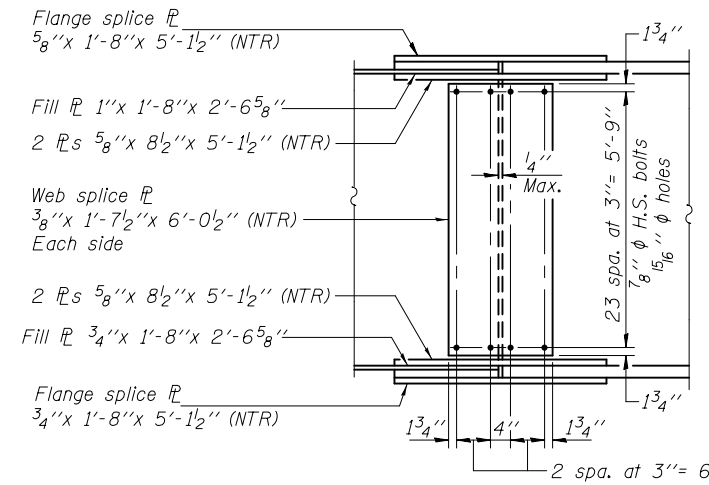


PLAN - TOP FLANGE

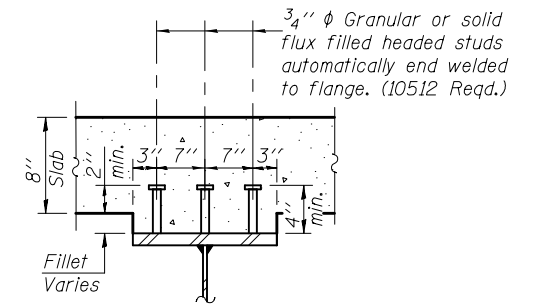


SECTION AT PIER

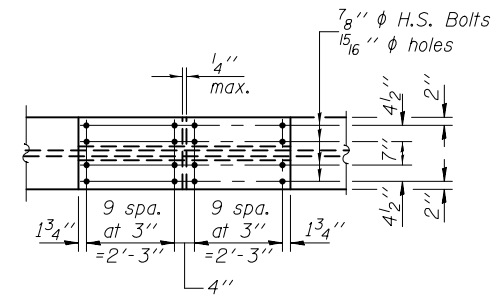
SECTION AT ABUTMENT



ELEVATION



SECTION A-A



PLAN - BOTTOM FLANGE

SPLICE 1 & 2 DETAILS
(24 Required)

Notes: Load carrying components designated "NTR" shall conform to the Impact Testing Requirement, Zone 2. Use 3/4" phi H.S. bolts with 1 5/16" phi holes in CF and CF1 cross frames. Two hardened washers required for each set of oversized holes. Place cross frame with channel flanges and outstanding angle legs outward from abutment backwall. Omit connecting plates on exterior side of exterior girder. All splice plates except filler plate shall be AASHTO M 270 Gr. 50.

PRE-FINAL

DESIGNED - Nick R. Barnett	EXAMINED - <i>Jayne F. Duff</i> ACTING ENGINEER OF BRIDGE DESIGN	DATE -	STATE OF ILLINOIS DEPARTMENT OF TRANSPORTATION	STRUCTURAL STEEL DETAILS STRUCTURE NO. 101-0195 (E.B.) & 101-0196 (W.B.)	F.A.P. R.T.E. 301	SECTION 3BR & 3BR-1	COUNTY WINNEBAGO	TOTAL SHEETS	SHEET NO.
CHECKED - Al-Barræ R. Shebib	PASSED - <i>Carl Binger</i> ACTING ENGINEER OF BRIDGES AND STRUCTURES	REVISED							
DRAWN - h.t. duong		REVISED							
CHECKED - NRB/GRA				SHEET NO. 28 OF 55 SHEETS					CONTRACT NO. 64D19
ILLINOIS FED. AID PROJECT									