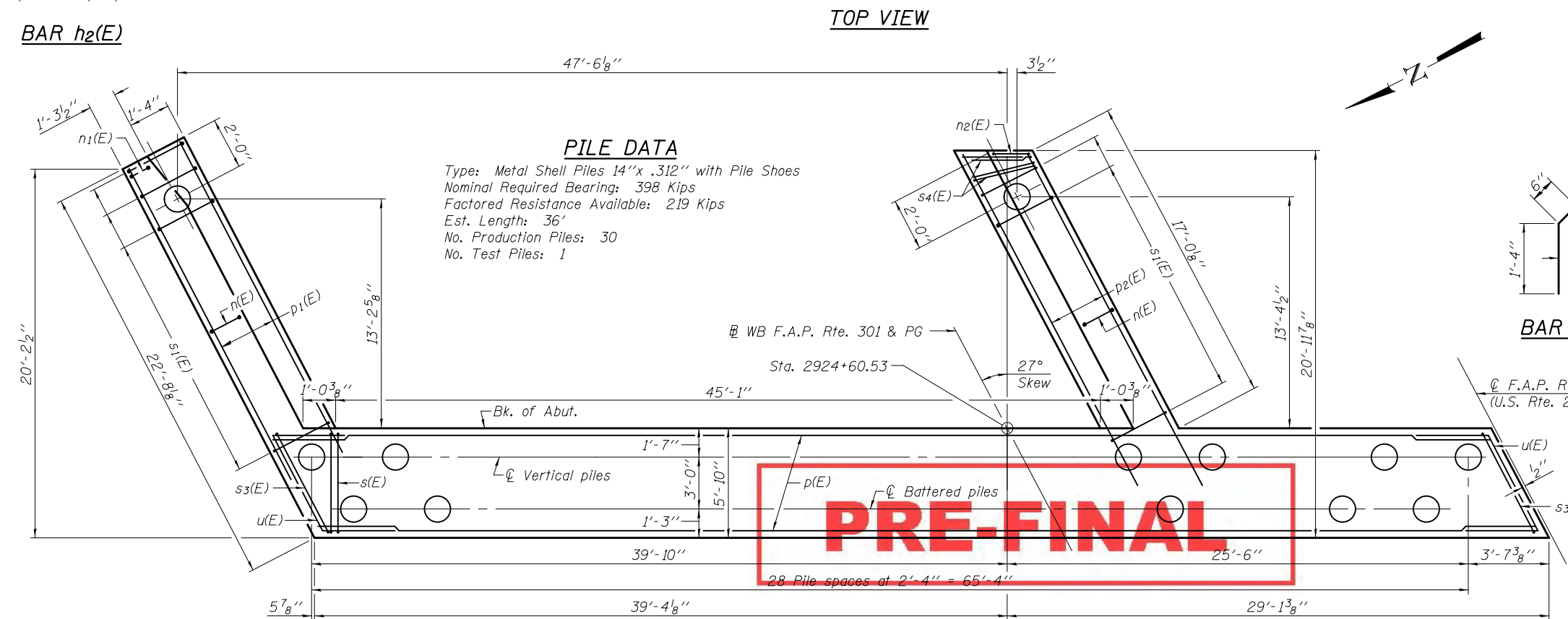
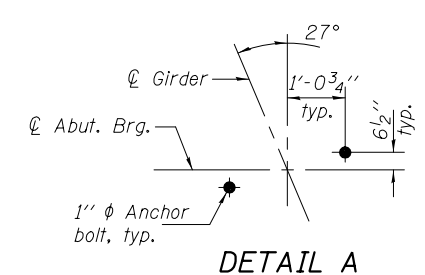


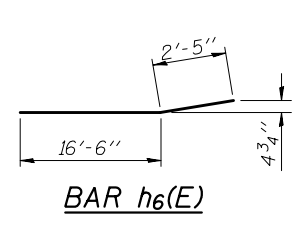
TOP VIEW



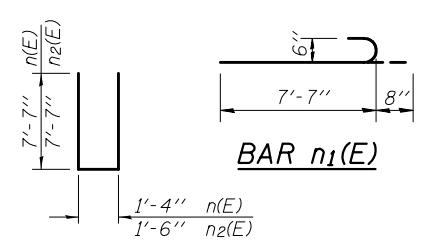
PLAN-PILE CAP



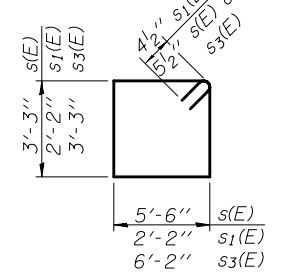
DETAIL A



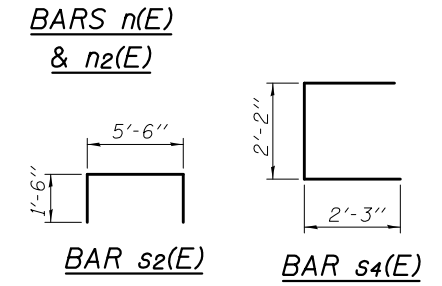
BAR h6(E)



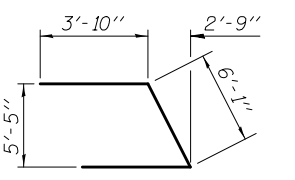
BAR n1(E)



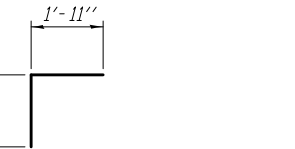
BARS s1(E) & s3(E)



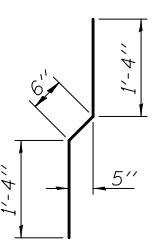
BARS n2(E) & s2(E)



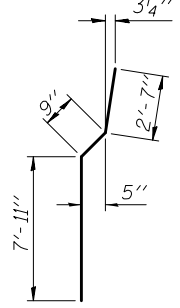
BAR u(E)



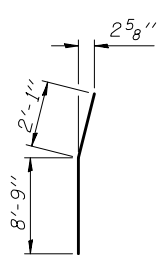
BAR v(E)



BAR v1(E)



BAR v7(E)



BAR v4(E)

EAST ABUTMENT (W.B.)
BILL OF MATERIAL

Bar	No.	Size	Length	Shape
h1(E)	18	#5	5'-11"	L
h2(E)	18	#5	5'-11"	L
h3(E)	14	#5	46'-10"	—
h4(E)	5	#6	46'-10"	—
h6(E)	11	#4	18'-11"	—
h7(E)	28	#4	18'-11"	—
h8(E)	5	#4	34'-1"	—
h9(E)	17	#4	18'-0"	—
n(E)	35	#6	16'-6"	U
n1(E)	6	#6	8'-3"	U
n2(E)	1	#6	16'-8"	U
p(E)	24	#7	36'-7"	—
p1(E)	6	#7	20'-8"	—
p2(E)	6	#7	20'-0"	—
s(E)	84	#5	18'-5"	□
s1(E)	35	#4	9'-5"	□
s2(E)	35	#4	8'-6"	□
s3(E)	2	#5	19'-9"	□
s4(E)	4	#4	6'-8"	□
u(E)	8	#6	13'-9"	L
v(E)	48	#5	3'-10"	L
v1(E)	48	#4	3'-2"	L
v2(E)	48	#5	8'-10"	—
v3(E)	48	#5	10'-2"	—
v4(E)	3	#6	10'-10"	—
v6(E)	39	#6	11'-4"	—
v7(E)	37	#6	11'-3"	—
Structure Excavation		Cu. Yd.	145.5	
Concrete Structures		Cu. Yd.	107.8	
Reinforcement Bars, Epoxy Coated		Pound	10180	
Furnishing Metal Shell Piles 14"x .312"		Foot	1080	
Driving Piles		Foot	1080	
Test Pile Metal Shells		Each	1	
Pile Shoes		Each	31	
Concrete Sealer		Sq. Ft.	1002.6	
Anchor Bolts, 1"		Each	12	

For details of bar splicers, see sheet 49 of 55.
For details of piles & concrete encasement, see sheet 47 of 55.