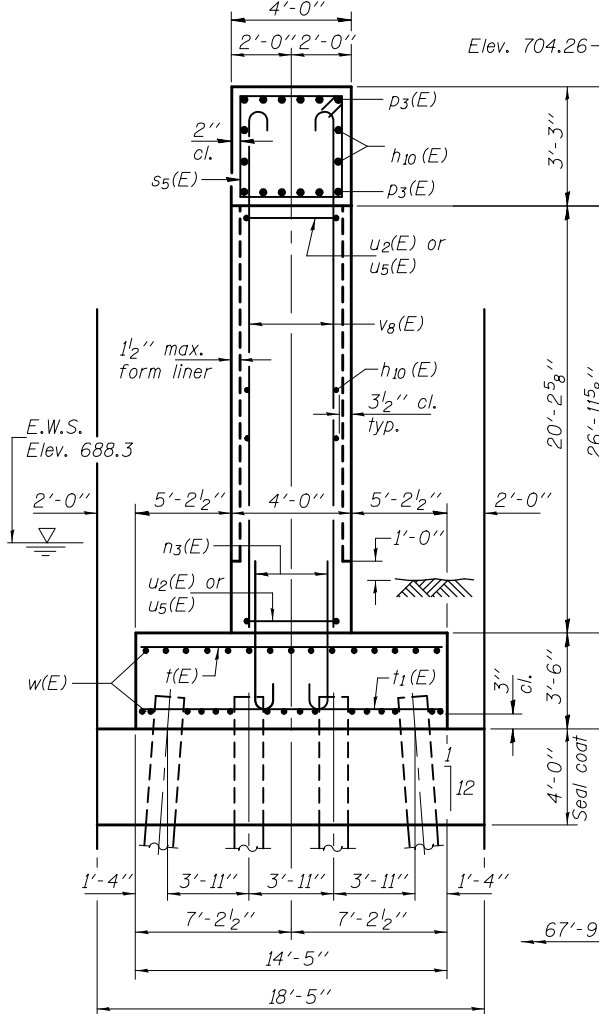
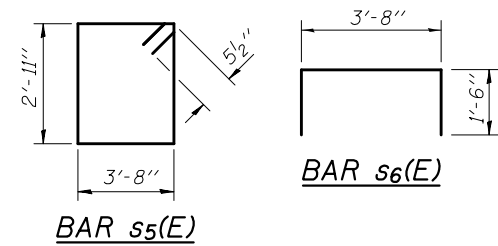


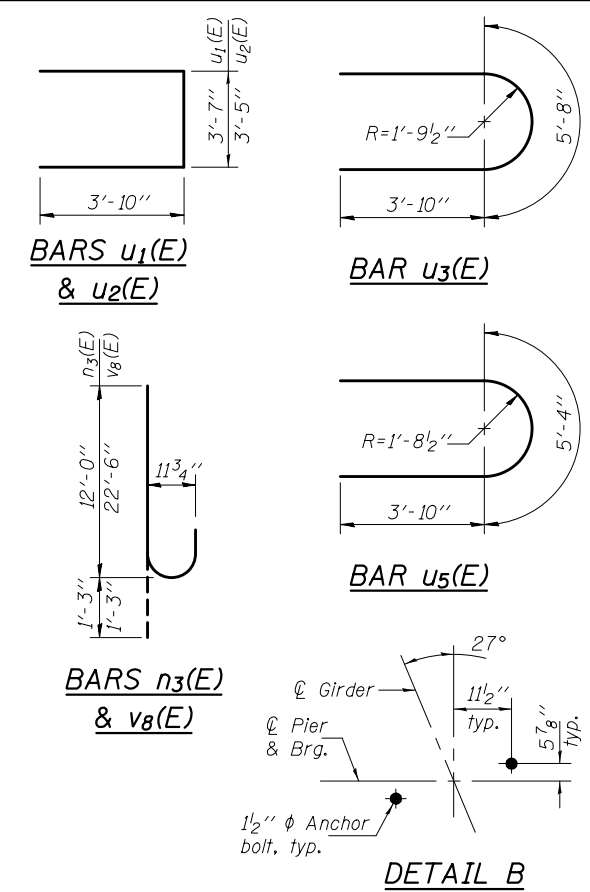
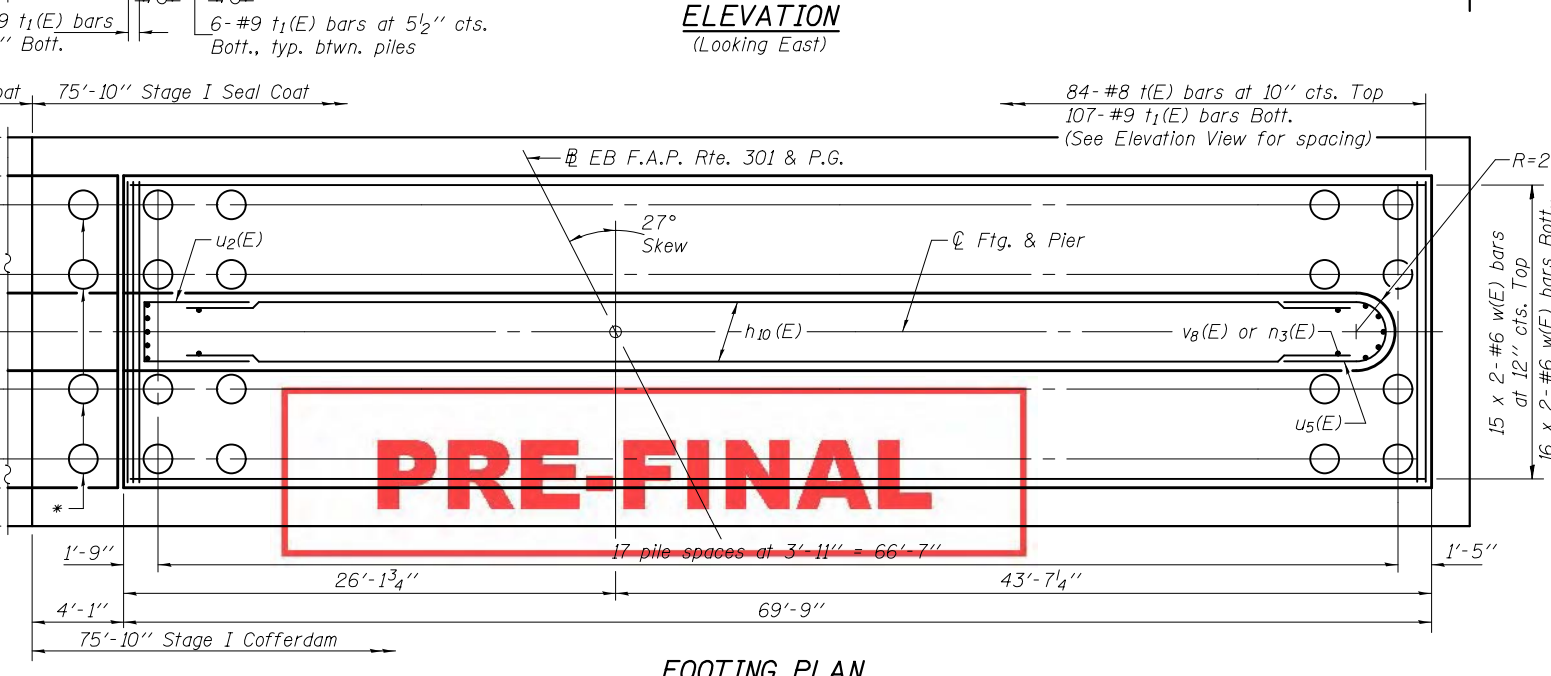
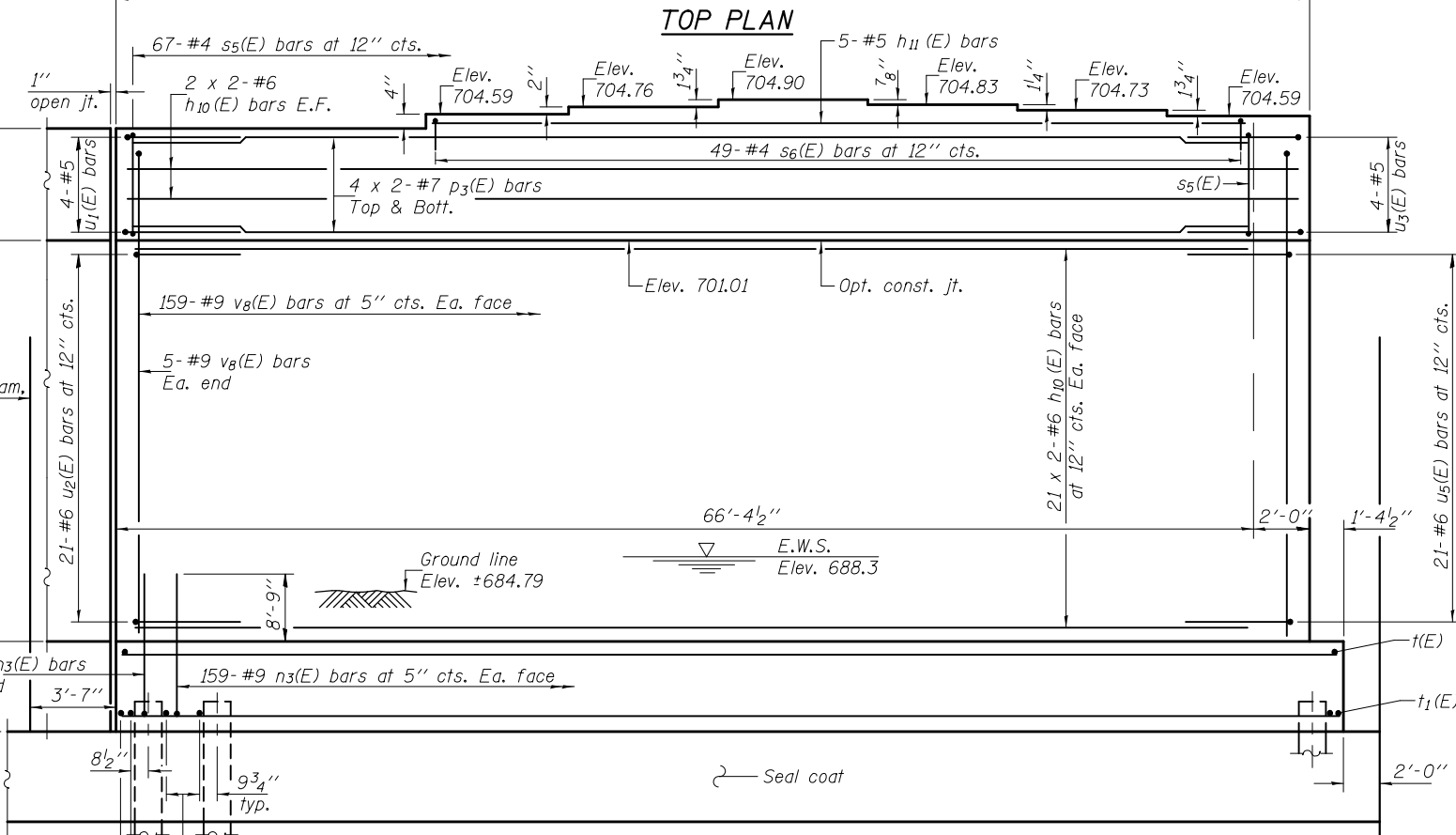
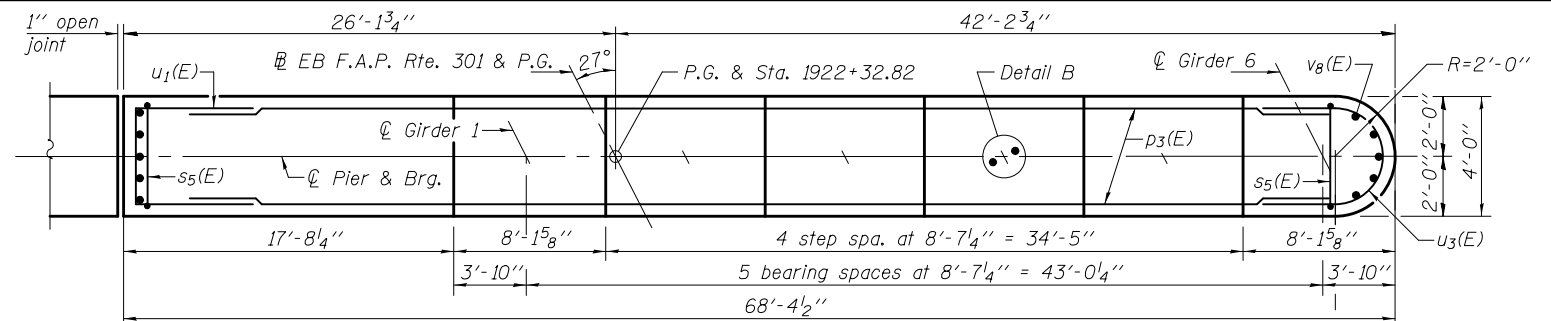
Notes:
 Space reinforcement in cap to miss anchor bolts.
 Four steps monolithically with cap.
 For details of piles, see sheet 48 of 55.



PILE DATA
 Type: Metal Shell Piles 14"x .312" with Pile Shoes
 Nominal Required Bearing: 279 Kips
 Factored Resistance Available: 151 Kips
 Est. Length: 33'
 No. Production Piles: 71
 No. Test Piles: 1

MIN. BAR LAP
 #6 bar = 3'-10"
 #7 bar = 5'-2"

*These piles shall be driven during Stage I Construction to avoid conflict during Stage II Construction.



BILL OF MATERIAL

Bar	No.	Size	Length	Shape
h ₁₀ (E)	92	#6	35'-1"	—
h ₁₁ (E)	5	#5	48'-4"	—
n ₃ (E)	328	#9	13'-3"	U
p ₃ (E)	16	#7	35'-9"	—
s ₅ (E)	67	#5	14'-1"	□
s ₆ (E)	49	#4	6'-8"	□
t(E)	84	#8	14'-3"	—
t ₁ (E)	107	#9	14'-3"	—
u ₁ (E)	4	#6	11'-3"	U
u ₂ (E)	21	#6	11'-1"	U
u ₃ (E)	4	#6	13'-4"	U
u ₅ (E)	21	#6	13'-0"	U
v ₈ (E)	328	#9	23'-9"	U
w(E)	62	#6	36'-8"	—
Cofferdam Excavation		Cu. Yd.	595	
Concrete Structures		Cu. Yd.	331	
Reinforcement Bars, Epoxy Coated		Pound	61440	
Furnishing Metal Shell Piles 14"x .312"		Foot	2343	
Driving Piles		Foot	2343	
Test Pile, Metal Shells		Each	1	
Pile Shoes		Each	72	
Cofferdam (Type 2), Location 1		Each	1	
Anchor Bolts 1 1/2"		Each	12	
Seal Coat Concrete		Cu. Yd.	206.9	

PRE-FINAL