

B.M. No. 35 4 NAILS IN ROOT OF 8" ELM
425'± LT. OF STA. 475+90, EL. 711.48

B.M. No. 36 P.K. NAIL IN ROOT W. SIDE OF 36" OAK
155'± LT. OF STA. 481+81, EL. 709.06

B.M. No. 37 P.K. NAIL IN W. ROOT OF 36" WILLOW
W. BANK CHUTE, 130'± LT. OF STA. 483+50, EL. 691.74

B.M. No. 38 3 NAILS IN N. SIDE OF 30" TWIN TREE
85'± RT. OF STA. 490+60, EL. 693.48

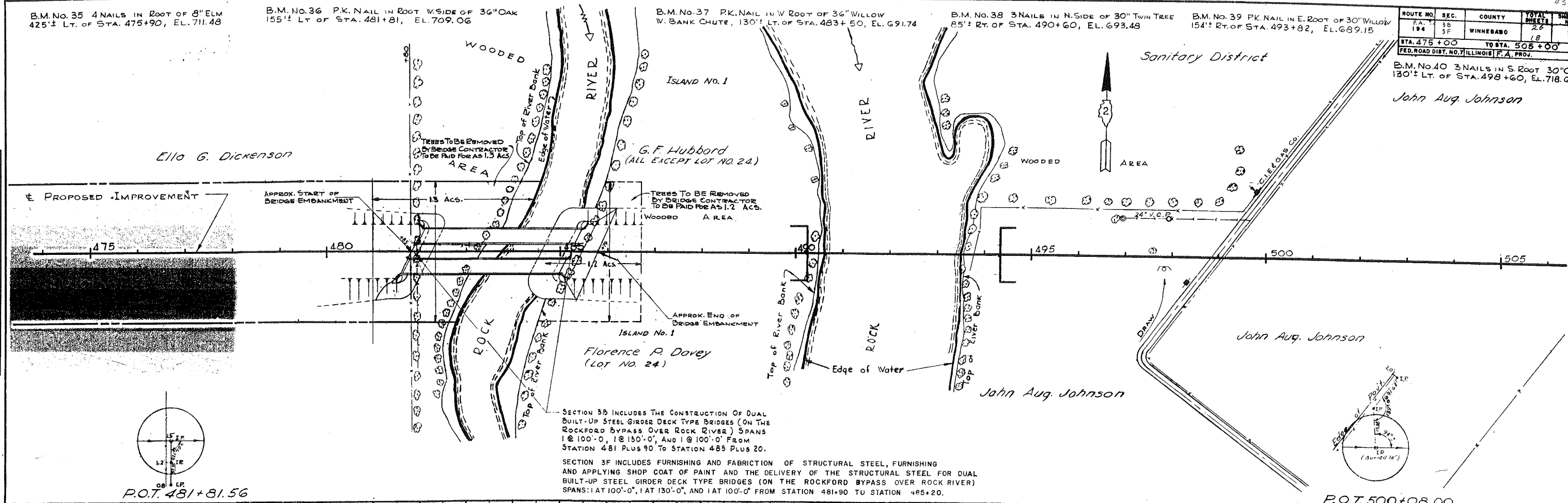
B.M. No. 39 P.K. NAIL IN E. ROOT OF 30" WILLOW
154'± RT. OF STA. 493+82, EL. 689.15

ROUTE NO.	SEC.	COUNTY	TOTAL SHEETS	SHEET NO.
194	3B	WINNEBAGO	26	18

STA. 475+00 TO STA. 505+00
FED. ROAD DIST. NO. 7 ILLINOIS P.A. PROJ.

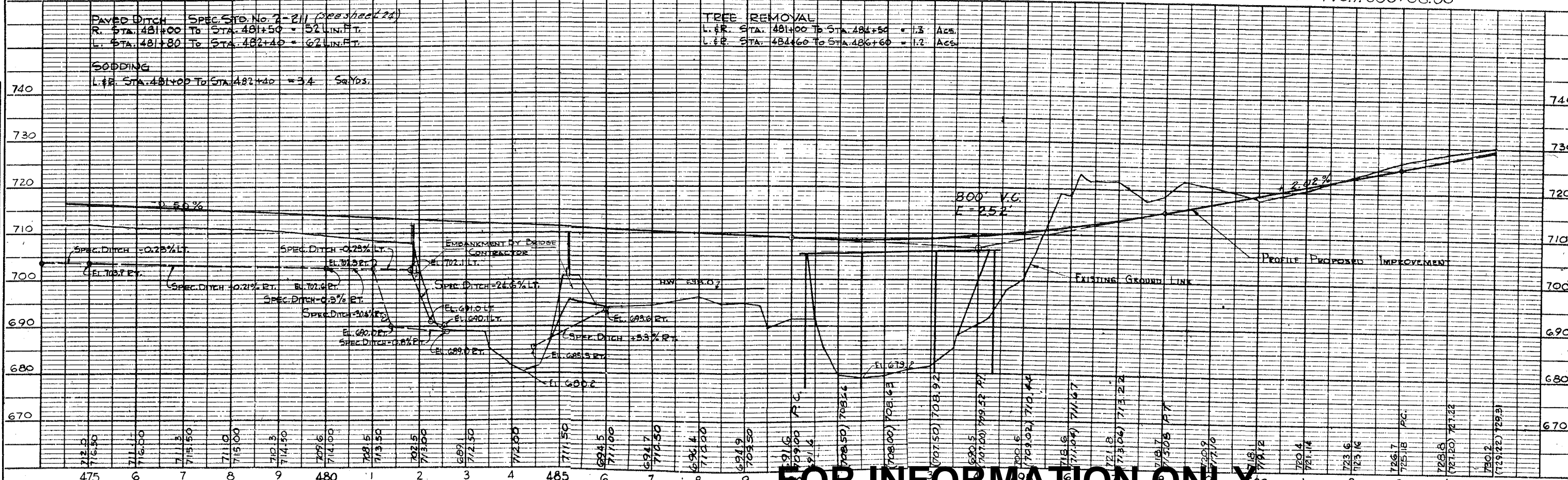
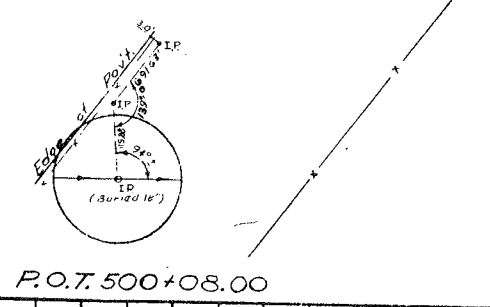
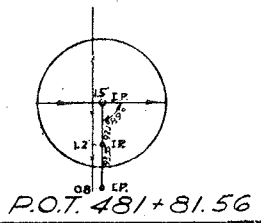
B.M. No. 40 3 NAILS IN S. ROOT 30" C
130'± LT. OF STA. 498+60, EL. 718.6

John Aug. Johnson



SECTION 3B INCLUDES THE CONSTRUCTION OF DUAL BUILT-UP STEEL GIRDER DECK TYPE BRIDGES (ON THE ROCKFORD BYPASS OVER ROCK RIVER) SPANS 1 @ 100'-0", 1 @ 130'-0", AND 1 @ 100'-0" FROM STATION 481 PLUS 90 TO STATION 485 PLUS 20.

SECTION 3F INCLUDES FURNISHING AND FABRICATION OF STRUCTURAL STEEL, FURNISHING AND APPLYING SHOP COAT OF PAINT AND THE DELIVERY OF THE STRUCTURAL STEEL FOR DUAL BUILT-UP STEEL GIRDER DECK TYPE BRIDGES (ON THE ROCKFORD BYPASS OVER ROCK RIVER) SPANS: 1 AT 100'-0", 1 AT 130'-0", AND 1 AT 100'-0" FROM STATION 481+90 TO STATION 485+20.



PAVED DITCH SPEC. STD. No. 2-211 (see sheet 24)
 R. STA. 481+00 TO STA. 481+50 = 52 IN. FT.
 L. STA. 481+80 TO STA. 482+40 = 62 IN. FT.

SODDING
 L. & R. STA. 481+00 TO STA. 482+40 = 34 SANDS.

TREE REMOVAL
 L. & R. STA. 481+00 TO STA. 484+50 = 1.3 ACS.
 L. & R. STA. 484+60 TO STA. 486+60 = 1.2 ACS.

FOR INFORMATION ONLY

DATE	BY	REVISIONS

DATE	BY	REVISIONS