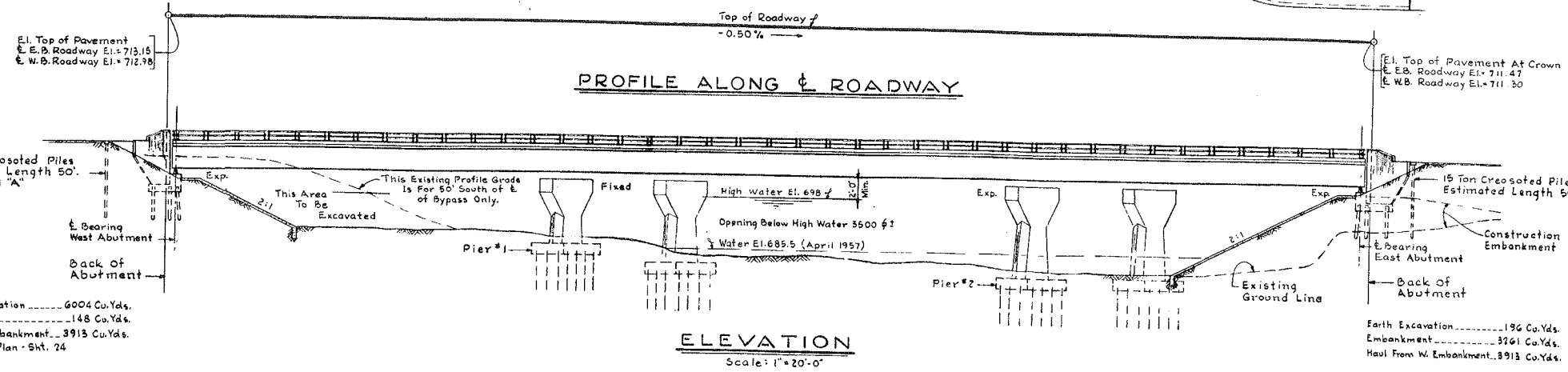
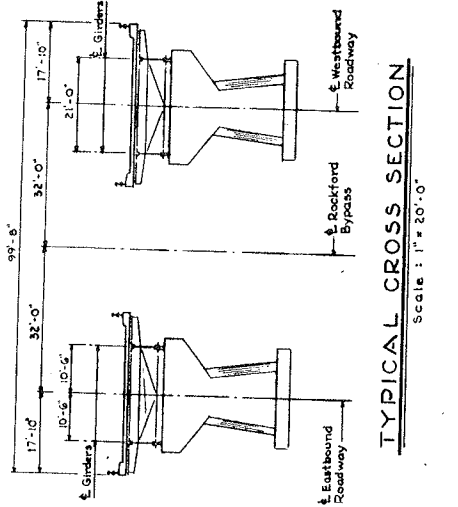
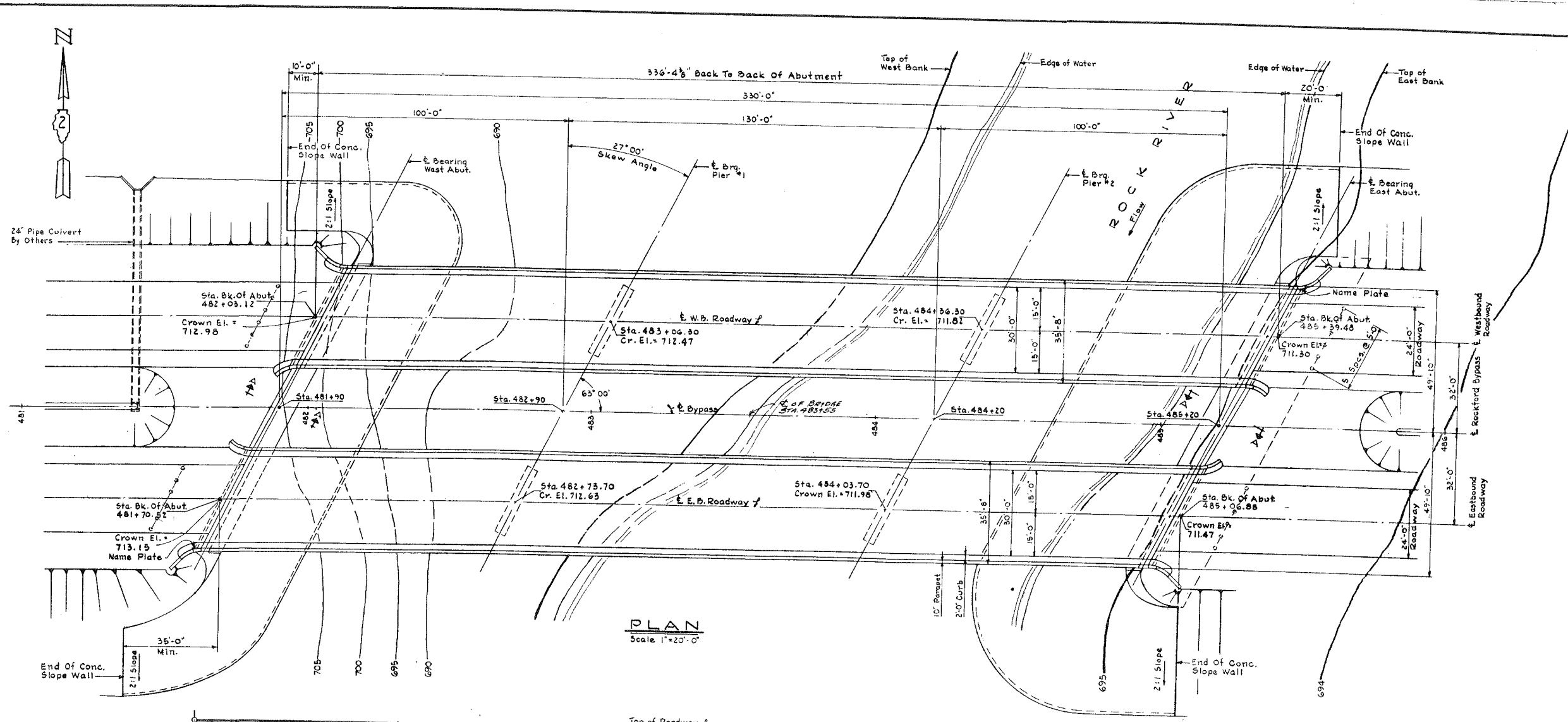
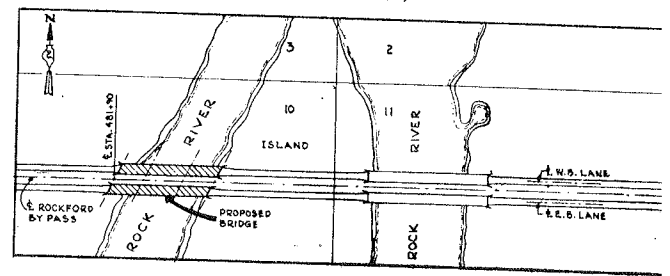


ROUTE NO.	SEC.	COUNTY	TOTAL SHEETS	NO.
F.A. 194	3 B	WINNEBAGO	26	18
STA. TO STA.		PROJ.		
FED. ROAD DIST. NO. 7 ILLINOIS				



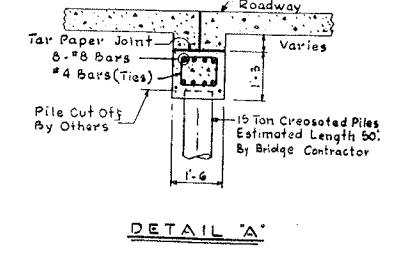
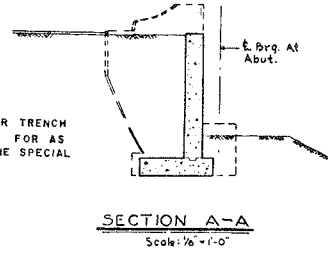
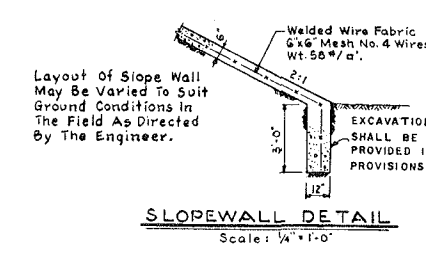
STATION 483+55
BUILT 195 BY
STATE OF ILLINOIS
F.A. RT. 194 SEC. 3 B
F.A. PROJ. U-284(5)
LOADING H20-S16

SEE STATE OF ILL. STA. 2113
NAME PLATE
(TWO REQ'D)



Class A Excavation.....6004 Cu.Yds.
Embankment.....148 Cu.Yds.
Haul To E. Embankment.....3913 Cu.Yds.
See Grading Plan - Sht. 24

Earth Excavation.....196 Cu.Yds.
Embankment.....3261 Cu.Yds.
Haul From W. Embankment.....3913 Cu.Yds.



DRAINAGE DATA

Drainage Area	6400 Sq. Miles
Character	Rolling Hilly
Required Opening	8866 Sq. Ft.
Proposed Opening	
By Bridge 3 B	3500 Sq. Ft.
Bridge 3 B1	5700 Sq. Ft.
Total	9200 Sq. Ft.

DESIGN DATA

LOADING:
Live Load H20-S16-44
20 p.s.f. Future Wearing Surface

STRESSES:
Concrete:
fc = 1400 ψ /a² Superstructure, n = 10
fc = 1000 ψ /a² Substructure (With Earth Pressure)
fc = 1400 ψ /a² Substructure (Without Earth Pressure)
75 ψ /a² Max. Allowable V in Pier Footings.

Steel:
Structural Reinforcing fs = 18,000 ψ /a²
fs = 20,000 ψ /a²

GIRDER MATERIAL

Flange	8 x 8 x 7/8"
Web	78 x 1/2"
Stiffeners	7 x 4 x 7/8"
All Cover Plates	20" Wide

FOR INFORMATION ONLY

ILLINOIS DIVISION OF HIGHWAYS
ROCKFORD BYPASS
F. A. ROUTE 194 SECTION **3B**
PROJECT _____ WINNEBAGO COUNTY
GENERAL PLAN
Sheet 157 of 290